

FOR ASSESSMENT AND TAXATION ONLY

NW S.E. 1/4 SEC. 35 T. 16S. R. 4W. W.M.
Lane County
1" = 200' 300'

RECEIVED

MAY 15 2009

WATER RESOURCES DEPT
SALEM, OREGON

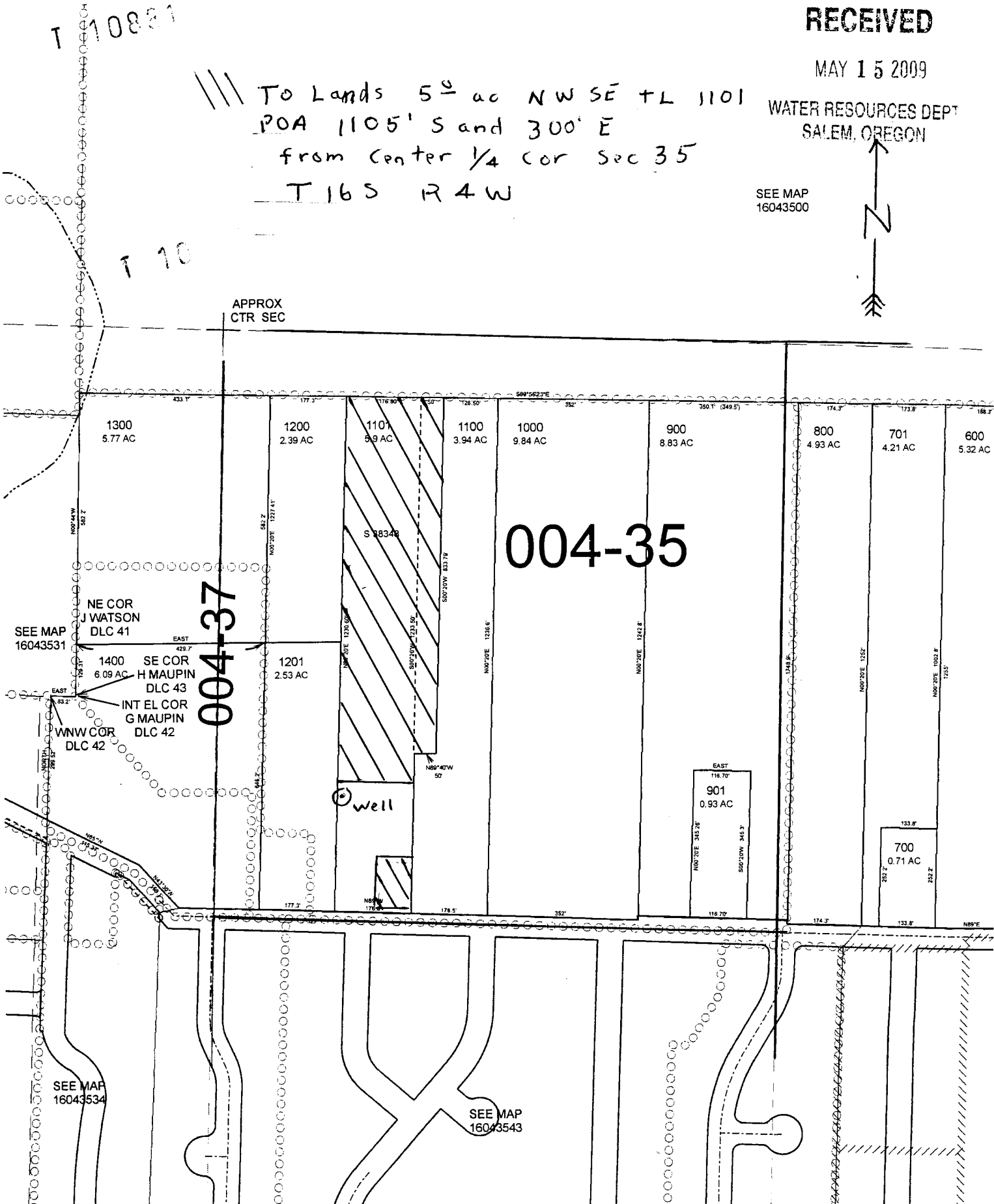
SEE MAP
16043500



/// To Lands 5 1/2 ac NW SE TL 1101
POA 1105' S and 300' E
from Center 1/4 Cor Sec 35
T 16 S R 4 W

004-35

004-37



AND TAXATION ONLY

SECTION 1, T.17S. R.4 W.W. M. LANE COUNTY

GR 1209

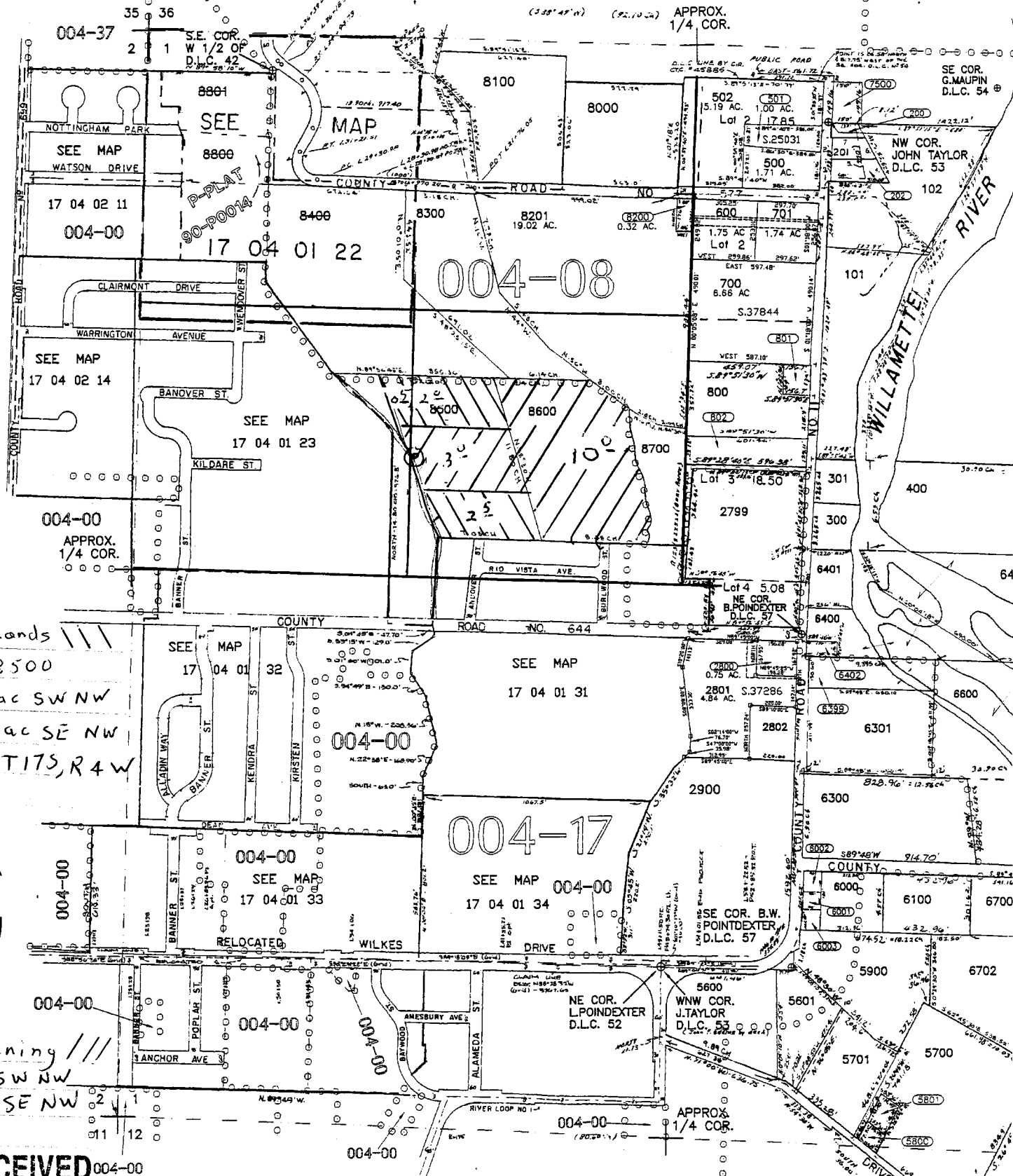
SCALE 1" = 400' 600'

Becker 8² Ac + L 8500

Map for Assignment and GR Mod. SEE MAP 16 04 36

DATE	MAP
11/18/03	MAP
11/19/03	L.A.
12/1/05	L.A.
9/27/07	CORR.

069-09



L 8801
3' 54.10 E, 85.0'
3' 01.50 W, 75.0'
3' 26.15 E, 28.43'

SEE MAP 17 04 02

Off Lands
TL 8500
0.5 ac SW NW
4.5 ac SE NW
Sec 1 T17S, R4W

SEE MAP 17 04 02

Remaining
0.1 SW NW
1.3 SE NW

RECEIVED 004-00

MAY 15 2009

SEE MAP 17 04 12 2 @ POA for off Lands - No Well Log
Well used since about 1960

WATER RESOURCES DEPT
SALEM, OREGON

10881

445' N and 1250' E of W 1/4 cor sec 1 T17S, R4W

SEE MAP 17 04 12

Muhammad
* 2545
4H-80

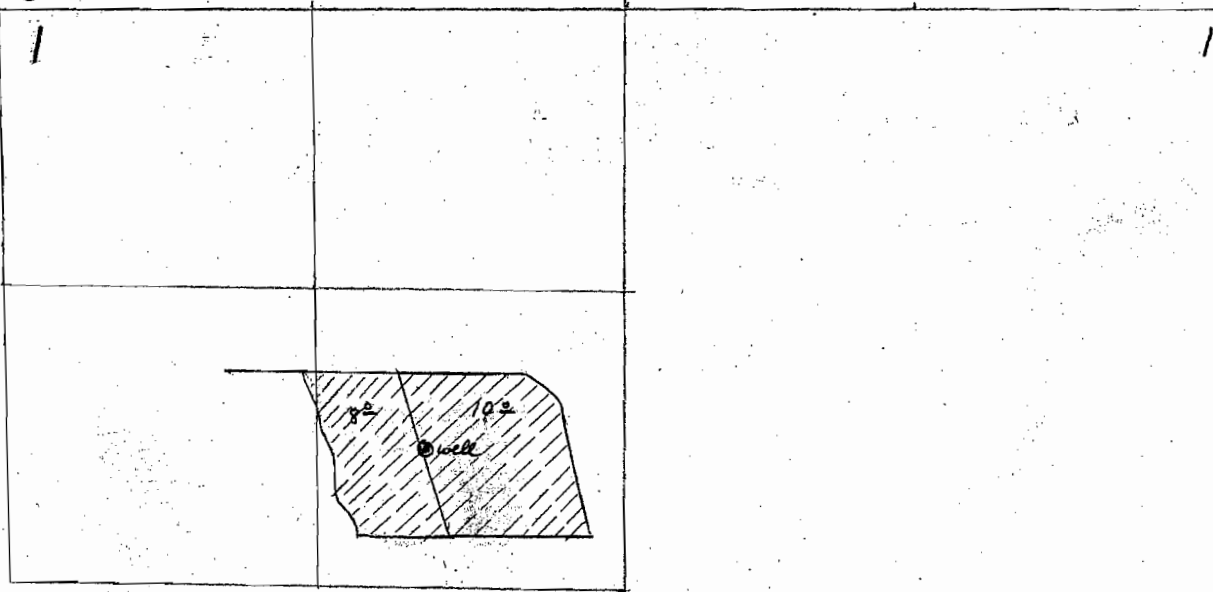
T 175, R 4W

35 36

3

2 1

1



GR-1209

RECEIVED
MAR 18 1958
STATE ENGINEER
SALEM, OREGON

2 1

1

11 12

12

Scale 8" to mile

