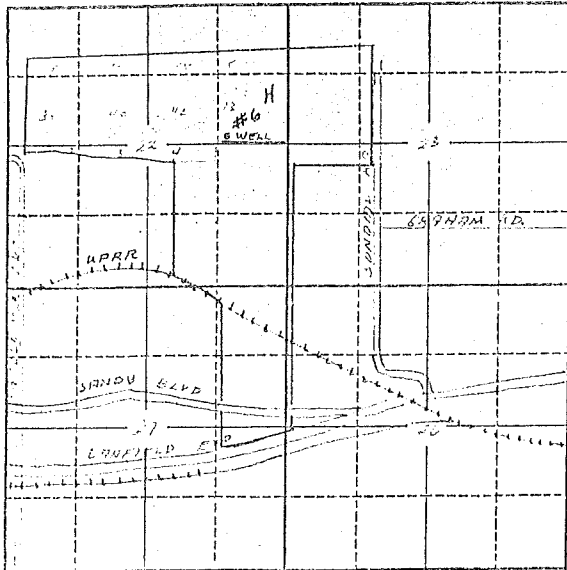


Township 11N Range 3E, W.M.  
North



Locate well and acreage of irrigated land on plat.  
Scale: 2" = 1 Mile

STATE OF OREGON }  
County of Multnomah } ss.

I, Sophie George, being first duly sworn, do hereby certify that I have read the foregoing Registration Statement and that all of the items therein contained are true to the best of my knowledge and belief.

Fairview Farms, Inc.  
[Signature] Secretary  
(Signature of Registrant)

Subscribed and sworn to before me this 21<sup>st</sup> day of March, 1958.

My commission expires 7-7-62 [Signature]  
(Notary Public)

(SEAL)

### CERTIFICATE OF REGISTRATION

STATE OF OREGON }  
County of Marion } ss.

This is to certify that the foregoing Registration Statement was received in the office of the State Engineer on the 18th day of April, 1958, at 4<sup>00</sup> o'clock P. M. and has been duly recorded in said office in Book No. 7 of Registration Statements on page GR-1589

Witness my hand this 1st day of December, 1958.  
[Signature]  
(State Engineer)

By \_\_\_\_\_  
(Deputy)

GR-1589

\$ 43.00