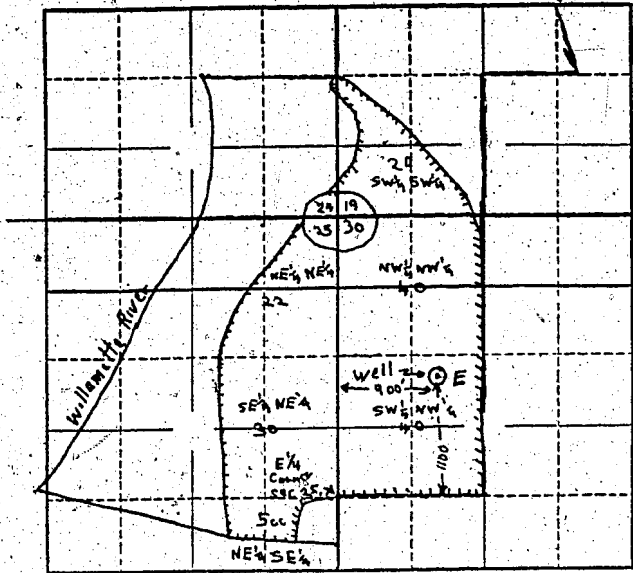


North



Locate well and acreage of irrigated land on plat.

Scale: $\frac{1}{32}$ - 1 Mile

STATE OF OREGON

County of Marion } ss.

I, E. Ralph DuRette, being first duly sworn, do hereby certify that I have read the foregoing Registration Statement and that all of the items therein contained are true to the best of my knowledge and belief.

E. Ralph DuRette
(Signature of Registrant)

Subscribed and sworn to before me this 22nd day of April, 1958.

My commission expires Sept 8, 1960 Chas. [Signature]
(Notary Public)

(SEAL)

CERTIFICATE OF REGISTRATION

STATE OF OREGON } ss.
County of Marion

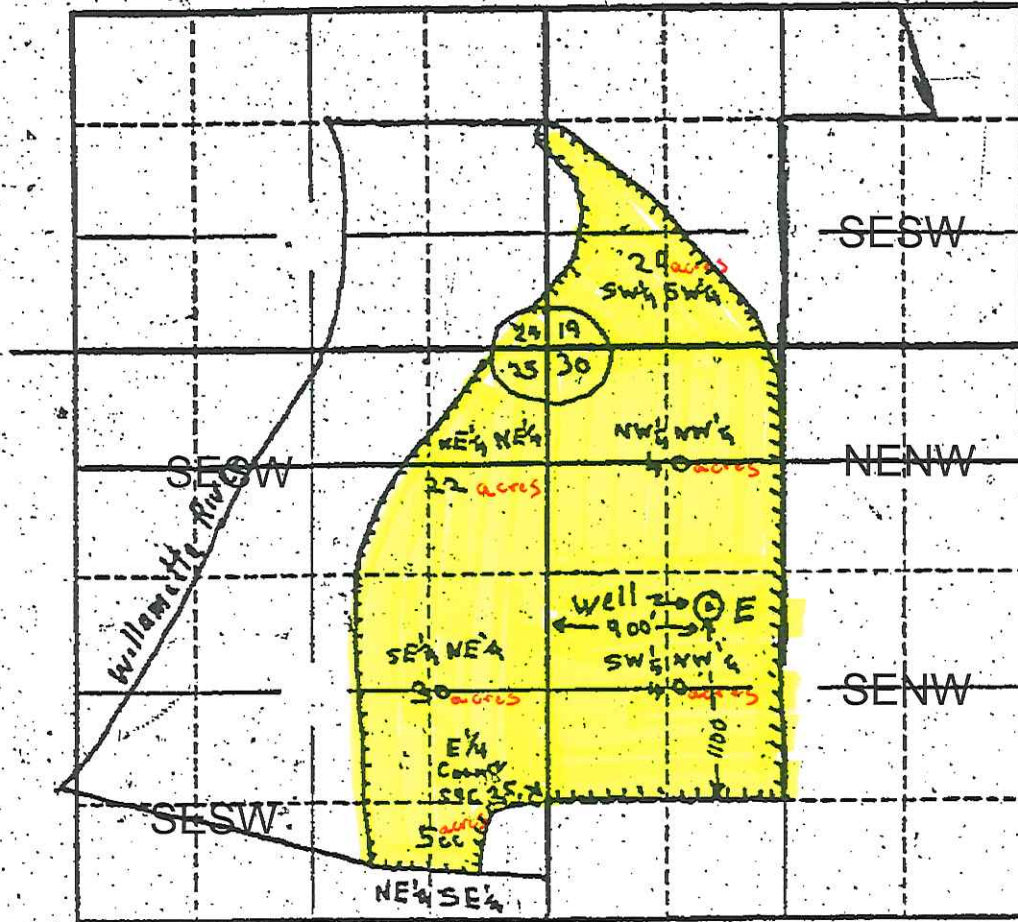
This is to certify that the foregoing Registration Statement was received in the office of the State Engineer on the 22nd day of April, 1958, at 8⁰⁰ o'clock A. M. and has been duly recorded in said office in Book No. 7 of Registration Statements on page GR-1436.

Witness my hand this 1st day of December, 1958.
Lewis A. Stanley
(State Engineer)

By [Signature]
(Deputy)

Township 5S Range R243, W.M.

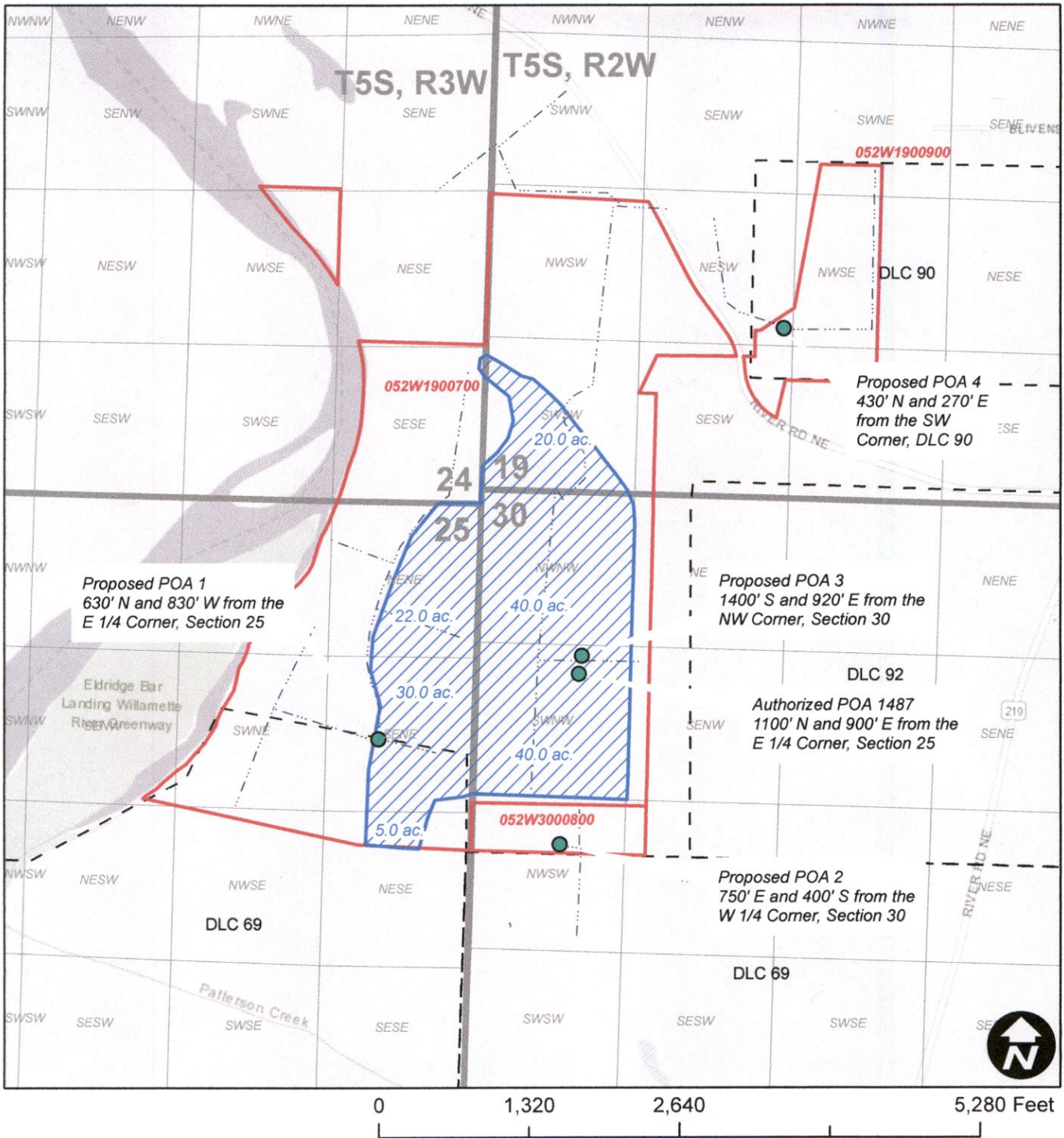
North







Locate well and acreage of irrigated land on plat.

Scale: - 1 Mile

Jane Stockfleth LLC Groundwater Registration Modification - GR 1487



Legend

-  GR 1487
-  Taxlot
-  Mainline
-  DLC

RECEIVED

APR 09 2020

13419

