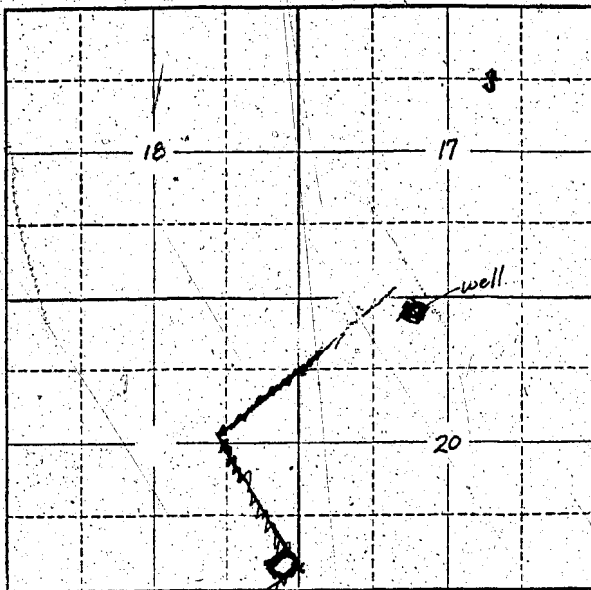


Township 4 S Range 3 W, W.M.
North



Locate well and acreage of irrigated land on plat.

Scale: 2" = 1 Mile

STATE OF OREGON

County of Yamhill

} ss.

I, Milton A. Palmer, being first duly sworn, do hereby certify that I have read the foregoing Registration Statement and that all of the items therein contained are true to the best of my knowledge and belief.

Milton A. Palmer
(Signature of Registrant)

Subscribed and sworn to before me this 19 day of June, 1958.

My commission expires December 1, 1961.

[Signature]
(Notary Public)

(SEAL)

CERTIFICATE OF REGISTRATION

STATE OF OREGON

County of Marion

} ss.

This is to certify that the foregoing Registration Statement was received in the office of the State Engineer on the 25th day of June, 1958, at 2:00 o'clock A.M. and has been duly recorded in said office in Book No. 17 of Registration Statements on page GR 100.

Witness my hand this 14th day of July, 1960

Lewis A. Stanley
(State Engineer)

By _____
(Deputy)

GR 4007

\$15.00