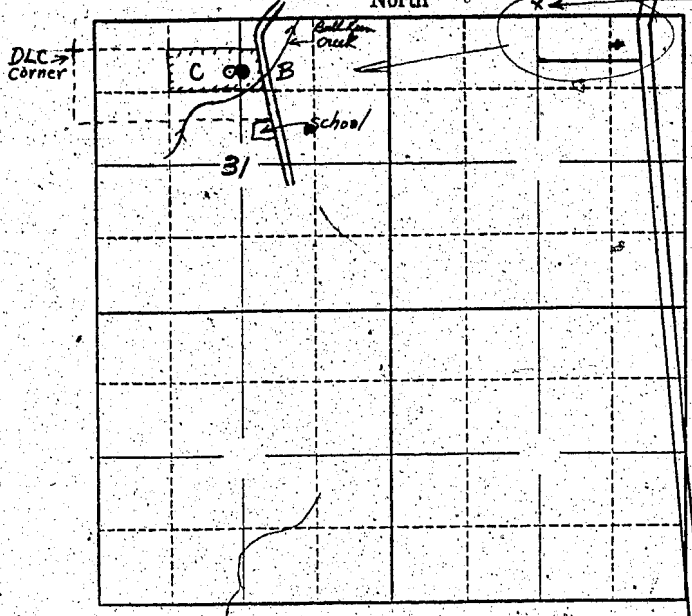


Township 12S Range 5W, W.M. North

Bellfountain Road

NW corner claims 66-42



Locate well and acreage of irrigated land on plat. Scale: 2" = 1 Mile

STATE OF OREGON

County of Benton } ss.

I, Leonard Nitka, being first duly sworn, do hereby certify that I have read the foregoing Registration Statement and that all of the items therein contained are true to the best of my knowledge and belief.

Leonard Nitka
(Signature of Registrant)

Subscribed and sworn to before me this 7th day of July, 1958

My commission expires Sept. 29, 1961

Margaret B. [unclear]
(Notary Public)

(SEAL)

CERTIFICATE OF REGISTRATION

STATE OF OREGON

County of Marion } ss.

This is to certify that the foregoing Registration Statement was received in the office of the State Engineer on the 8th day of July, 1958, at 8:00 o'clock A.M. and has been duly recorded in said office in Book No. 16 of Registration Statements on page GR-3850

Witness my hand this 28th day of December, 1959

Stewart A. Stanley
(State Engineer)

By _____ (Deputy)

GR 3850

#15.22