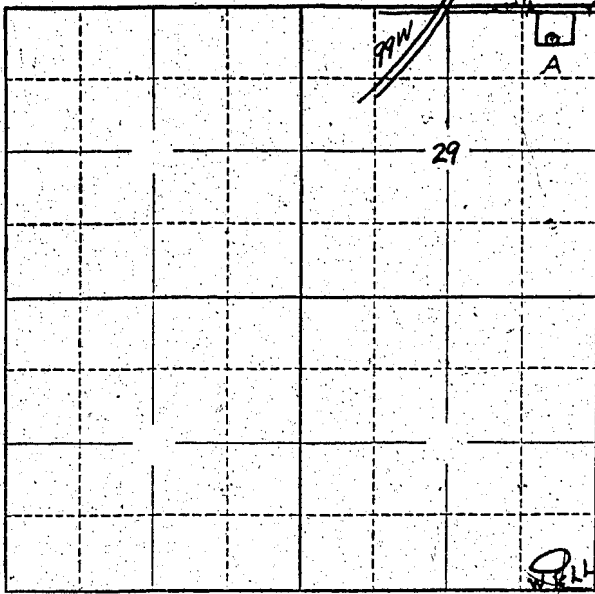


Township 25 Range 1W W.M.

North



Locate well and acreage of irrigated land on plat.

Scale: 2" = 1 Mile

STATE OF OREGON

County of Marion } ss.

I, Henry W. Bunch, being first duly sworn, do hereby certify that I have read the foregoing Registration Statement and that all of the items therein contained are true to the best of my knowledge and belief.

Henry W. Bunch  
(Signature of Registrant)

Subscribed and sworn to before me this 14 day of July, 1958

My commission expires 1 day of August, 1958  
(Notary Public)

(SEAL)

**CERTIFICATE OF REGISTRATION**

STATE OF OREGON

County of Marion } ss.

This is to certify that the foregoing Registration Statement was received in the office of the State Engineer on the 15th day of July, 1958 at 1:00 o'clock P. M. and has been duly recorded in said office in Book No. 16 of Registration Statements on page GR-4004

Witness my hand this 15th day of March, 1960

Henry A. Stanley  
(State Engineer)

By \_\_\_\_\_ (Deputy)

GR. 4004

\$15.00