

W. B. 635

C.S. 2612

DOY GATLIN

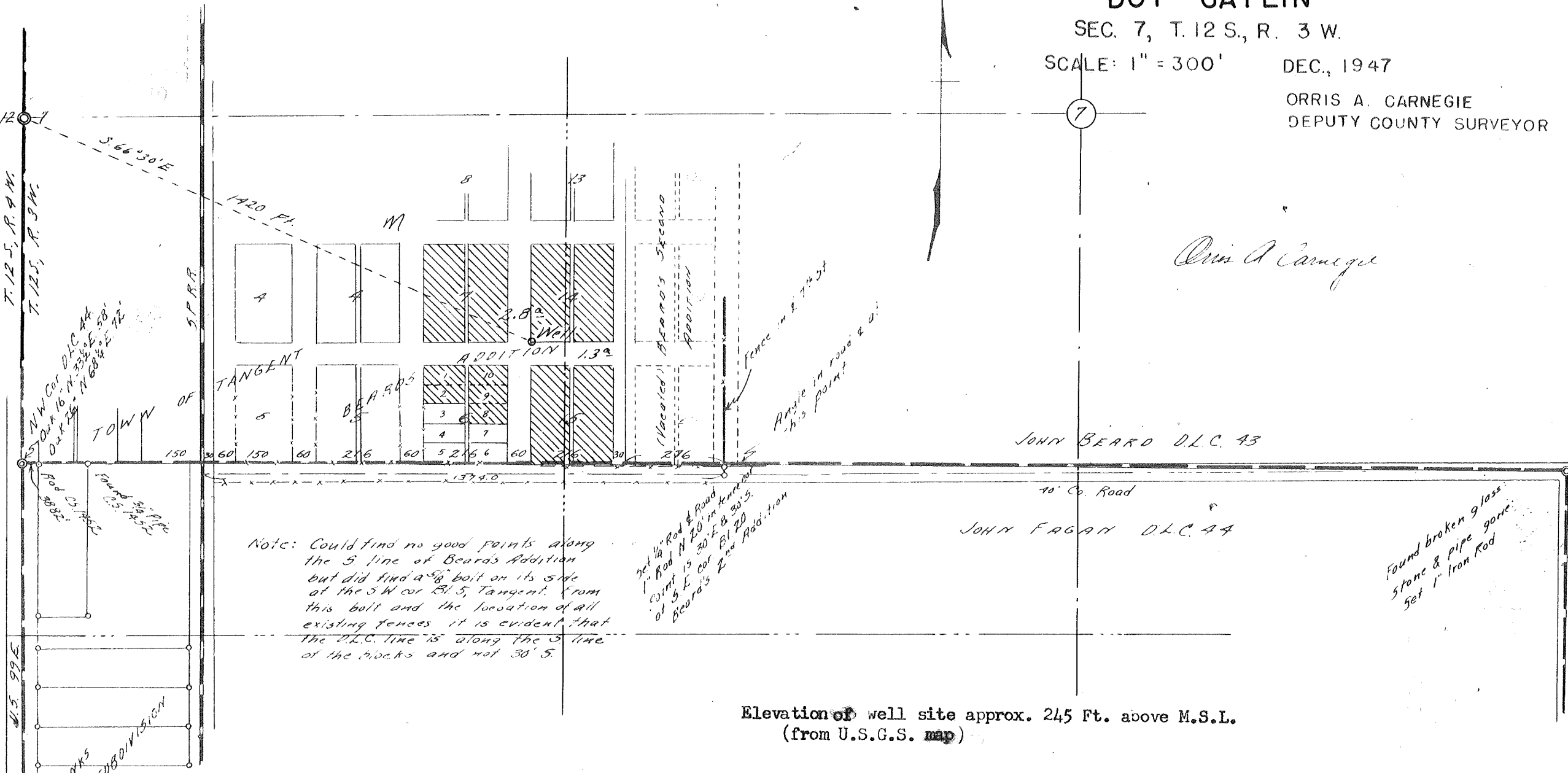
SEC. 7, T. 12 S., R. 3 W.

SCALE: 1" = 300'

DEC., 1947

ORRIS A. CARNEGIE
DEPUTY COUNTY SURVEYOR

Orris A Carnegie



T. 12 S., R. 3 W.

T. 12 S., R. 3 W.

U.S. 99 E.

JENKINS SUBDIVISION

N.W. Cor. D.L.C. 44
Dist. 16' N. 33 1/2° E. 58'
Dist. 16' N. 68 1/2° E. 72'

Found 3/4" Pipe
C.S. 1552

Found 3/4" Pipe
C.S. 1552

Found broken glass
Stone & Pipe gone
Set 1" Iron Rod

Note: Could find no good points along the S line of Beard's Addition but did find a 5/8" bolt on its side at the SW cor B15, Tangent. From this bolt and the location of all existing fences it is evident that the D.L.C. line is along the S line of the blocks and not 30 S.

Set 1/2" Rod & Road
1" Rod N 20° in tangent
Dist 15 cor B15 & 30 S.
Beard's 2nd Addition

JOHN BEARD D.L.C. 43

JOHN FAGAN D.L.C. 44

Elevation of well site approx. 245 Ft. above M.S.L.
(from U.S.G.S. map)

GR2294