

THIS MAP WAS PREPARED FOR ASSESSMENT PURPOSES ONLY

SEC.08 T.10S. R.03W. W.M.  
LINN COUNTY, OREGON

10 3W 8

SEE MAP 10 3W 5

140-19

New Well site

PARTITION PLAT  
2007-97

100  
64.39 AC

101  
1.88 AC  
PARCEL 1

CA 24679

PARCEL 2

102  
2.22 AC  
PARCEL 2

1703  
11.21 AC  
PARCEL 1

1704  
70.4 AC  
PARCEL 2

DEVER-CORNER RD.

COUNTY ROAD NO.34

700  
83.07 AC

701  
80.54 AC

PARTITION PLAT  
2005-29

140-16

PARCEL 1

800  
140.89 AC

SEE MAP 10 3W 7

8-9

900  
142.19 AC

800  
26.82 AC

SEE MAP 10 3W 9



Gary & Goldie  
Burton

GR 2960 Modification  
T10S R3W Sec 8  
TL 500  
A in POA

Proposed well site  
1430' S. and 840' W  
of N 1/4 cor Sec 8.  
N 44-71910  
W 123-08530

Scale 1" = 1000'

RECEIVED  
MAR 20 2008  
WATER RESOURCES DEPT  
SALEM, OREGON

1 10564

SEE MAP 10 3W 17

10 3W 8

11/14/07.08:39:58.Wed

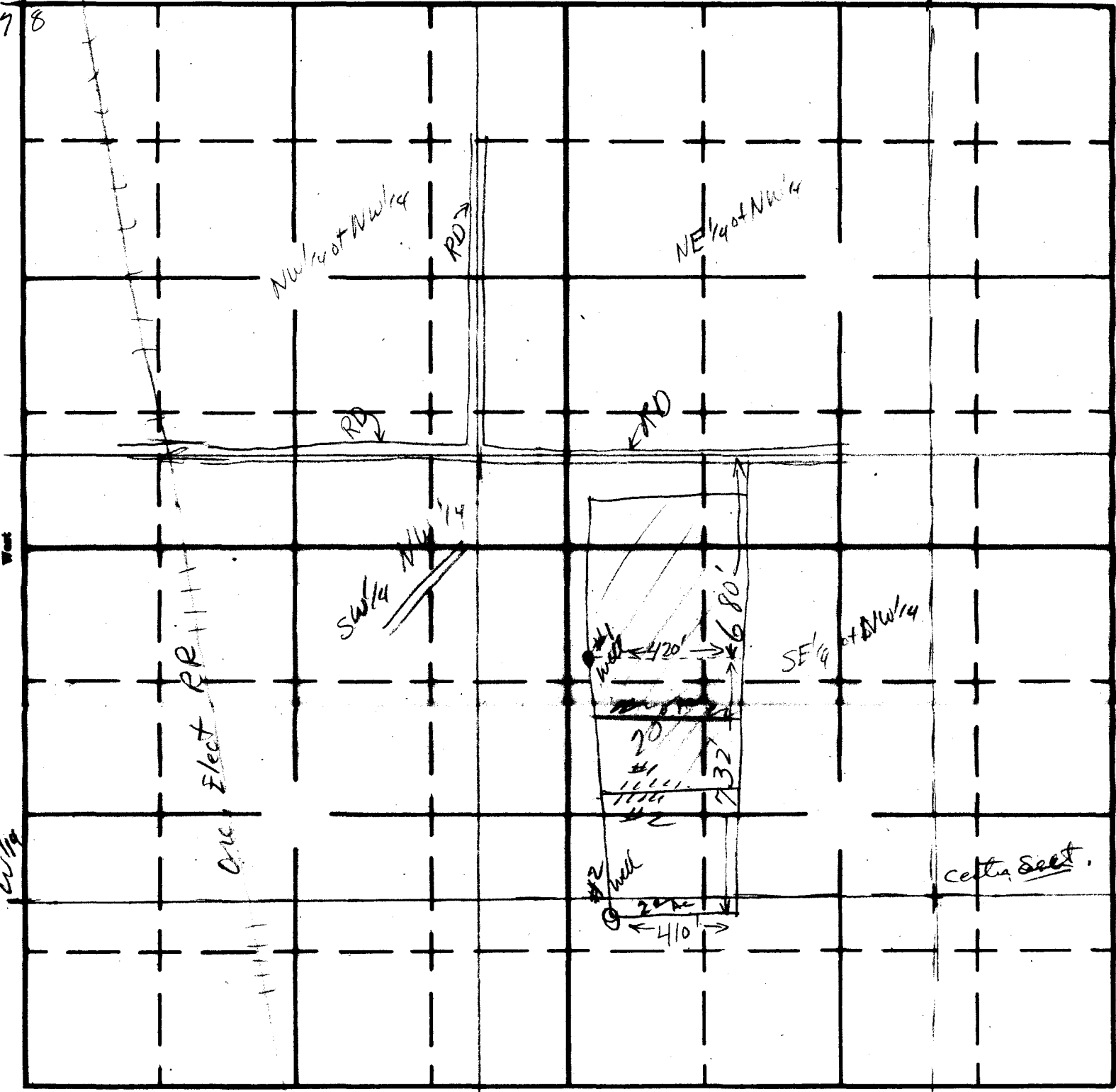
SECTION

TOWNSHIP ....., RANGE ....., W. M.

1" = 400  
N 1/4

6/5  
7/8

North



West

East

South

N 1/4

Cattle Salt

Elect RR

Cable

NW 1/4 of NW 1/4

NE 1/4 of NW 1/4

SW 1/4 NW 1/4

SE 1/4 of NW 1/4

420'

680'

410'

#2 well

20'

31'

11 1/4'

7 3/4'

20'

RD

RD

RD

