

# CHARLES GRIZZEL

SEC. 4, T. 10 S., R. 3 W., W.M., LINN CO., ORE.

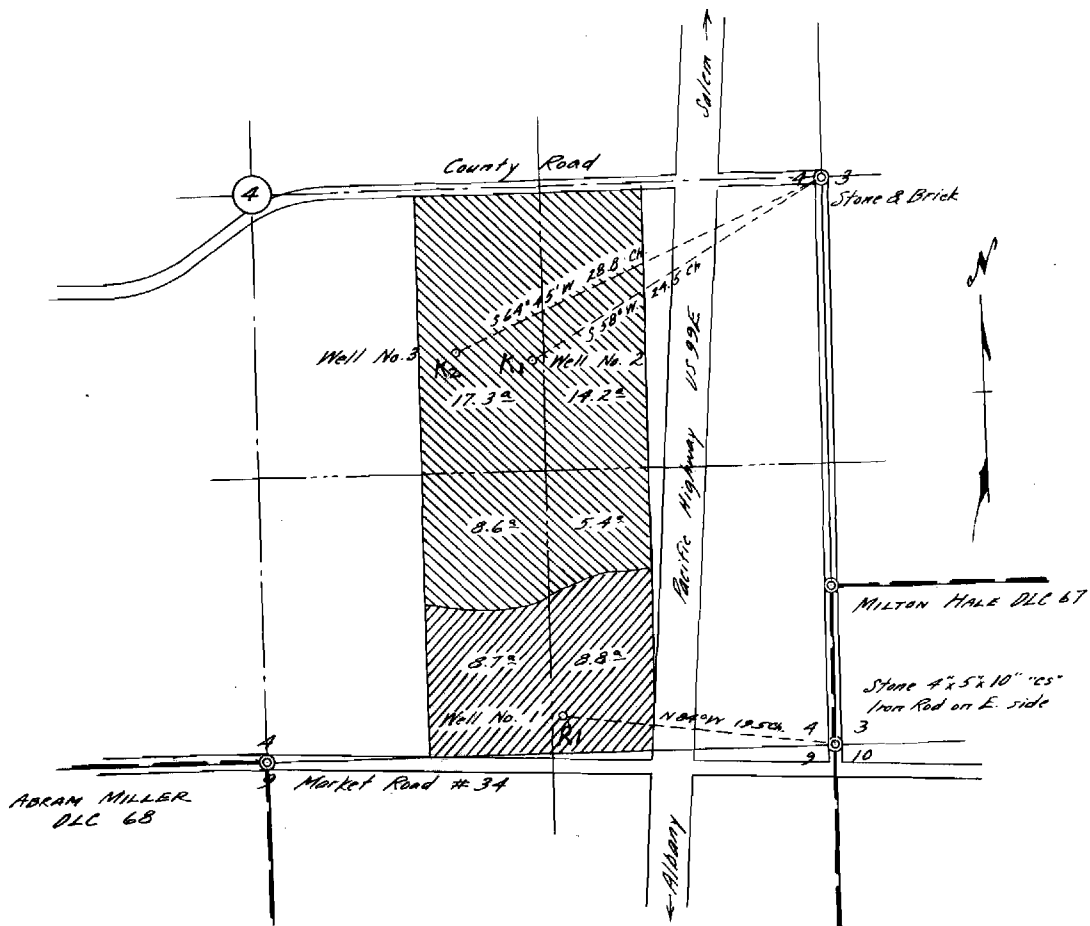
GR-325

Scale: 1" = 10 Chains

Dec. 21, 1956

ORRIS A. CARNEGIE

DEP. CO. SURVEYOR



Elev. of well sites approx. 200 Ft. above MSL (from quadrangle map)

REGISTERED  
OREGON  
LAND SURVEYOR

*Orris A. Carnegie*

MAY 9, 1947  
ORRIS A. CARNEGIE  
213