

RECEIVED

DEC 1 0 2018

OWRD

13080

ATTACH D  
1/1

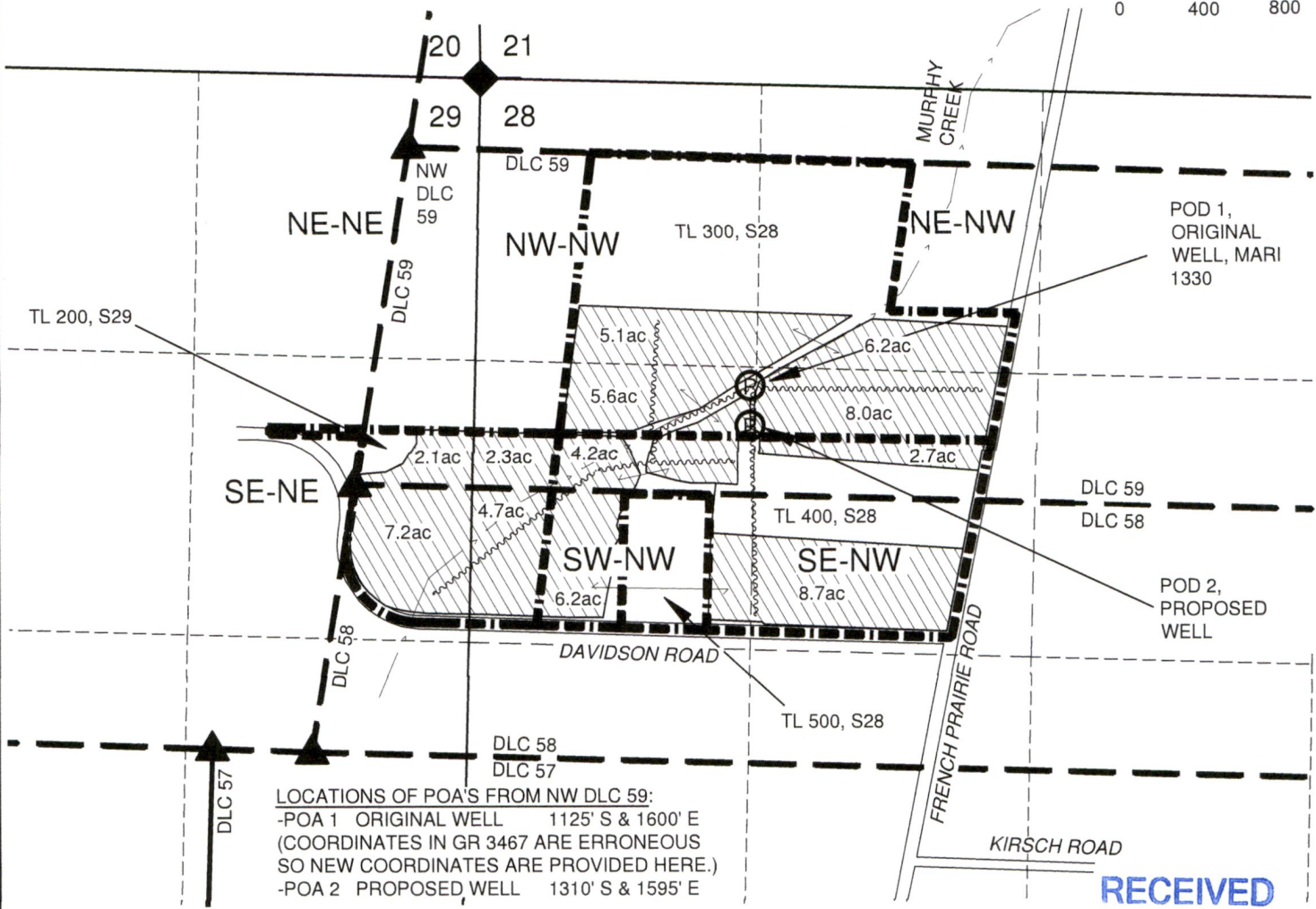


# Map For Groundwater Registration Modification

Sections 28 & 29, T4S, R2W, Marion County  
GR 3467, Cert. GR 3207



1 IN = 800 FT  
0 400 800



LOCATIONS OF POA'S FROM NW DLC 59:  
-POA 1 ORIGINAL WELL 1125' S & 1600' E  
(COORDINATES IN GR 3467 ARE ERRONEOUS  
SO NEW COORDINATES ARE PROVIDED HERE.)  
-POA 2 PROPOSED WELL 1310' S & 1595' E

- NOTES:
- THIS MAP IS NOT INTENDED TO PROVIDE LEGAL DIMENSIONS OR LOCATIONS OF PROPERTY OWNERSHIP LINES.
  - PROPERTY LINES, QUARTER-QUARTER LINES, DONATION LAND CLAIM (DLC) LINES ARE BASED ON THE TAX ASSESSOR MAPS FOR SECTIONS 28 & 29, T4S, R2W.
  - IRRIGATION AND WELL LOCATIONS ARE BASED ON AN AERIAL PHOTO FROM GOOGLE MAPS WITH 2017 IMAGERY DATE.
  - FOR UNKNOWN PROPERTY LINES AND OCCUPATION LINES DON'T MATCH AS WELL AS TYPICALLY OBTAINED USING THIS METHOD.
  - THE SOURCE OF THE ORIGINAL GR3467 IRRIGATION AREA IS THE WATER RESOURCES MAPPING SOFTWARE, AND THE SOURCE OF THAT DATA IS UNKNOWN.
  - THE WATER CONVEYANCE LINE LOCATIONS ARE PROPOSED AND COULD CHANGE.

**LEGEND**

- DONATION LAND CLAIM (DLC) CORNER
- SECTION CORNER
- POINT OF APPROPRIATION (WELL)
- STREAM OR SURFACE DRAINAGE
- TAX LOT LINE
- SECTION LINE
- QUARTER-QUARTER LINE
- DLC LINES
- WATER CONVEYANCE LINES
- ORIGINAL IRRIGATION AREA
- PROPOSED IRRIGATION AREA

RECEIVED  
DEC 10 2018  
OWRD



MAP BY:  
**ASPEN RURAL LAND CONSULTING**  
ERIC URSTADT, PE, PLS  
971-250-1520  
Nov 2018  
B.Davidson2D

13080

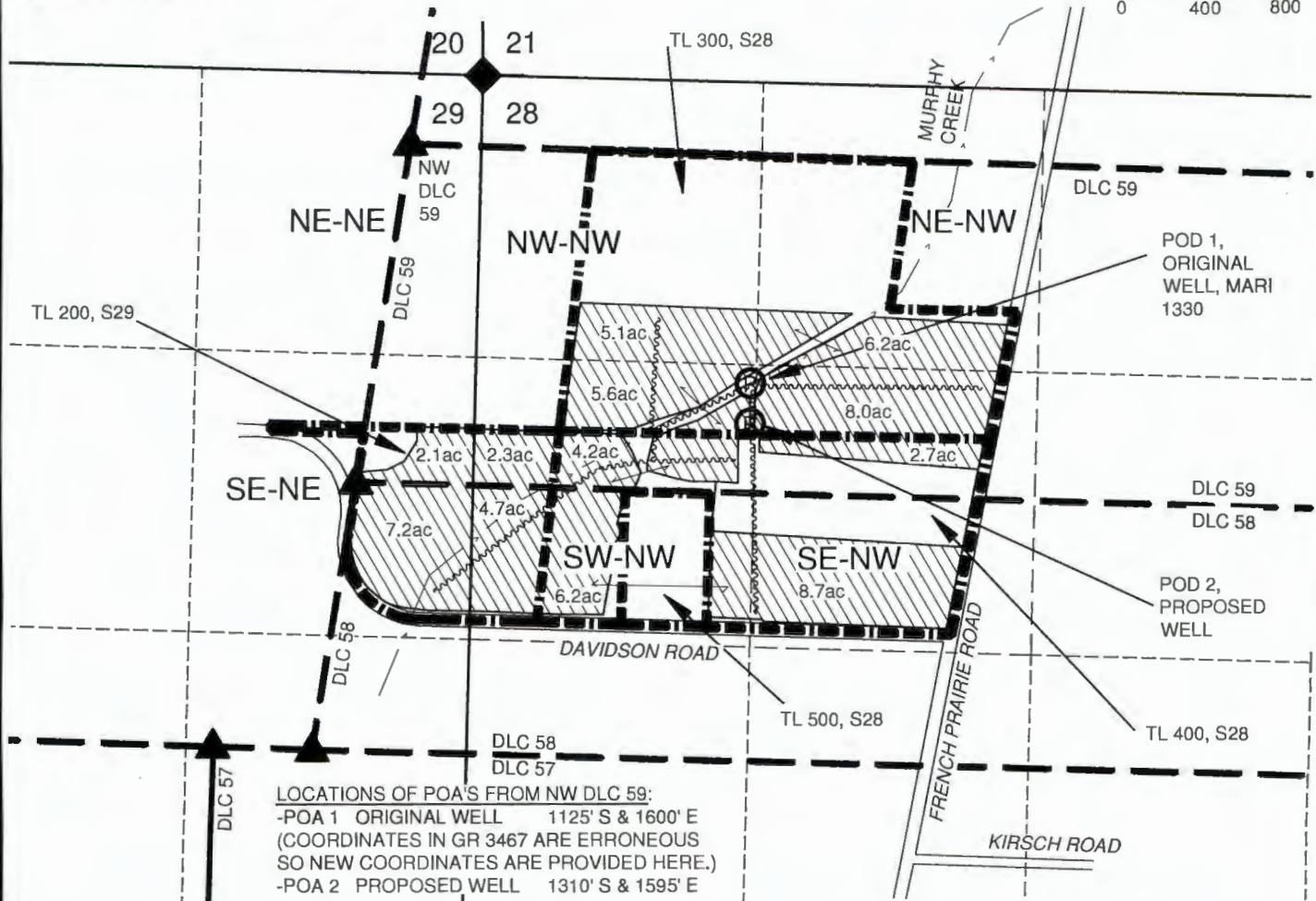


# Groundwater Registration Modification TO Lands Map

SectionS 28 & 29, T4S, R2W, Marion County  
GR 3467, Cert. GR 3207



1 IN = 800 FT  
0 400 800



LOCATIONS OF POA'S FROM NW DLC 59:  
 -POA 1 ORIGINAL WELL 1125' S & 1600' E  
 (COORDINATES IN GR 3467 ARE ERRONEOUS  
 SO NEW COORDINATES ARE PROVIDED HERE.)  
 -POA 2 PROPOSED WELL 1310' S & 1595' E

**NOTES:**

- THIS MAP IS NOT INTENDED TO PROVIDE LEGAL DIMENSIONS OR LOCATIONS OF PROPERTY OWNERSHIP LINES.
- PROPERTY LINES, QUARTER-QUARTER LINES, DONATION LAND CLAIM (DLC) LINES ARE BASED ON THE TAX ASSESSOR MAPS FOR SECTIONS 28 & 29, T4S, R2W. PROPERTY LINES AND OCCUPATION LINES DON'T MATCH AS WELL AS TYPICAL USING THIS METHOD.
- IRRIGATION AND WELL LOCATIONS ARE BASED ON AN AERIAL PHOTO FROM GOOGLE MAPS WITH 2017 IMAGERY DATE.
- THE WATER CONVEYANCE LINE LOCATIONS ARE PROPOSED AND COULD CHANGE.

**SUPERSEDING**



Received by OWRD

FEB 25 2020

Salem, OR

- LEGEND**
- DONATION LAND CLAIM (DLC) CORNER
  - SECTION CORNER
  - POINT OF APPROPRIATION (WELL)
  - STREAM OR SURFACE DRAINAGE
  - TAX LOT LINE
  - SECTION LINE
  - QUARTER-QUARTER LINE
  - DLC LINES
  - WATER CONVEYANCE LINES
  - PROPOSED IRRIGATION AREA

MAP BY:  
**ASPEN RURAL LAND  
 CONSULTING**  
 ERIC URSTADT, PE, PLS  
 971-250-1520  
 Feb 2020  
 B.Davidson3B

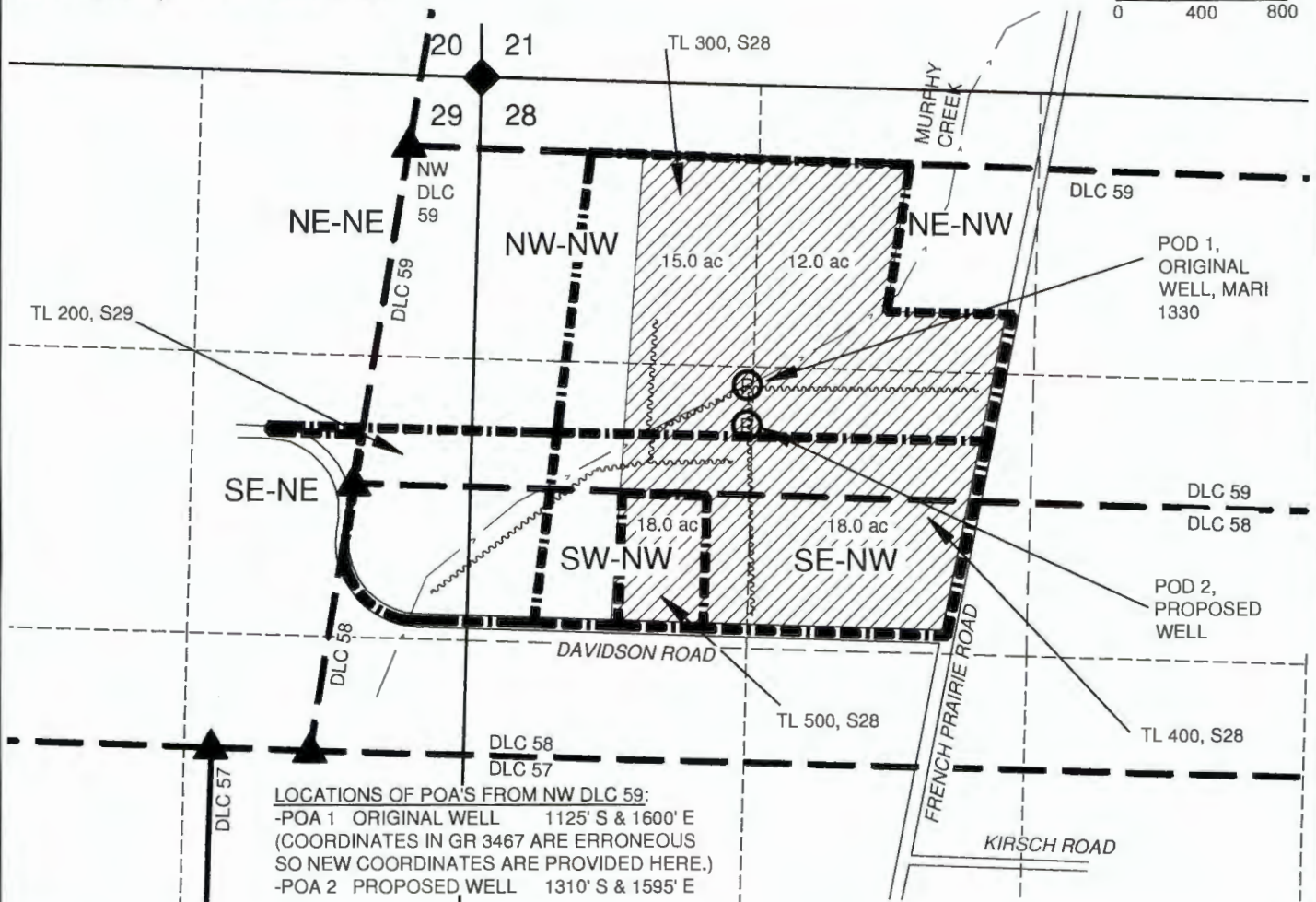


# Groundwater Registration Modification FROM Lands Map

SectionS 28 & 29, T4S, R2W, Marion County  
GR 3467, Cert. GR 3207



1 IN = 800 FT  
0 400 800



LOCATIONS OF POA'S FROM NW DLC 59:  
 -POA 1 ORIGINAL WELL 1125' S & 1600' E  
 (COORDINATES IN GR 3467 ARE ERRONEOUS  
 SO NEW COORDINATES ARE PROVIDED HERE.)  
 -POA 2 PROPOSED WELL 1310' S & 1595' E

**NOTES:**

- THIS MAP IS NOT INTENDED TO PROVIDE LEGAL DIMENSIONS OR LOCATIONS OF PROPERTY OWNERSHIP LINES.
- PROPERTY LINES, QUARTER-QUARTER LINES, DONATION LAND CLAIM (DLC) LINES ARE BASED ON THE TAX ASSESSOR MAPS FOR SECTIONS 28 & 29, T4S, R2W. PROPERTY LINES AND OCCUPATION LINES DON'T MATCH AS WELL AS TYPICAL USING THIS METHOD.
- IRRIGATION AND WELL LOCATIONS ARE BASED ON AN AERIAL PHOTO FROM GOOGLE MAPS WITH 2017 IMAGERY DATE.
- THE SOURCE OF THE "FROM" GR3467 IRRIGATION AREA IS THE WATER RESOURCES MAPPING SOFTWARE, AND THE SOURCE OF THAT DATA IS UNKNOWN. THE "FROM" ACRE ARE FROM THE WATER RESOURCES WEBSITE SUMMARY PAGE FOR GR3467.
- THE WATER CONVEYANCE LINE LOCATIONS ARE PROPOSED AND COULD CHANGE.

**SUPERSEDING**

- LEGEND**
- DONATION LAND CLAIM (DLC) CORNER
  - SECTION CORNER
  - POINT OF APPROPRIATION (WELL)
  - STREAM OR SURFACE DRAINAGE
  - TAX LOT LINE
  - SECTION LINE
  - QUARTER-QUARTER LINE
  - DLC LINES
  - WATER CONVEYANCE LINES
  - ORIGINAL IRRIGATION AREA

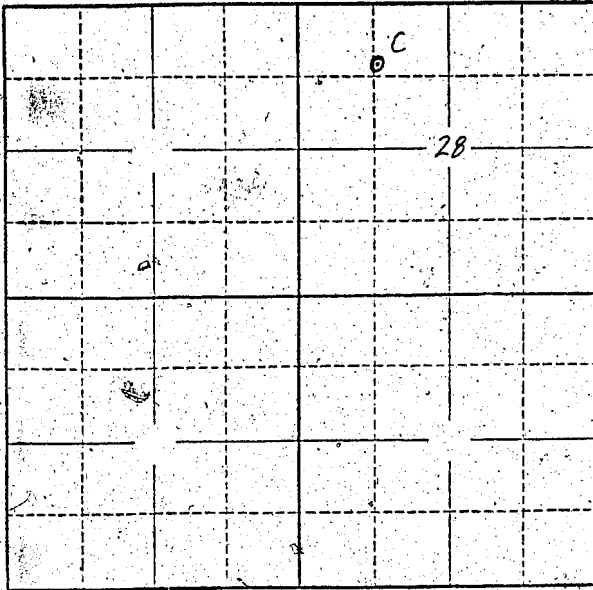
Received by OWRD

FEB 25 2020

Salem, OR



**ASPEN RURAL LAND  
CONSULTING**  
 ERIC URSTADT, PE, PLS  
 971-250-1520  
 Feb 2020  
 B.Davidson3B



Locate well and acreage of irrigated land on plat.  
Scale: 2" = 1 Mile

STATE OF OREGON

County of Marion } ss.

I, Richard M. Kay, being first duly sworn, do hereby certify that I have read the foregoing Registration Statement and that all of the items therein contained are true to the best of my knowledge and belief.

Richard M. Kay  
(Signature of Registrant)

Subscribed and sworn to before me this 31st day of July, 1958

My commission expires 12th June 1961 W.M.S. Bartholomew  
(Notary Public)

(SEAL)

**CERTIFICATE OF REGISTRATION**

STATE OF OREGON }  
County of Marion } ss.

This is to certify that the foregoing Registration Statement was received in the office of the State Engineer on the 31st day of July, 1958, at 3:00 o'clock P M. and has been duly recorded in said office in Book No. 13 of Registration Statements on page GR-3207

Witness my hand this 20th day of July, 1959

Lewis A. Stovall  
(State Engineer)

By \_\_\_\_\_ (Deputy)

#19.95