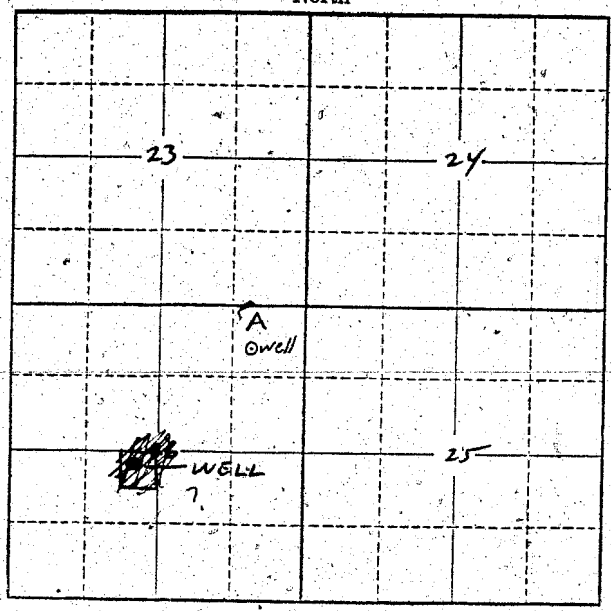


Township 15 Range 2 W, W.M.  
North



Locate well and acreage of irrigated land on plat.  
Scale: 2" = 1 Mile

STATE OF OREGON

County of MULT. } ss.

I, J. A. LABROOK, being first duly sworn, do hereby certify that I have read the foregoing Registration Statement and that all of the items therein contained are true to the best of my knowledge and belief. The United States National Bank of Portland, Trustee.

*[Signature]*  
(Signature of Registrant)

Subscribed and sworn to before me this 2<sup>ND</sup> day of SEP, 1955

ASST. TRUST OFFICER

My commission expires Jan 7 1961

*[Signature]*  
(Notary Public)

(SEAL)

**CERTIFICATE OF REGISTRATION**

STATE OF OREGON

County of Marion } ss.

This is to certify that the foregoing Registration Statement was received in the office of the State Engineer on the 4 day of August, 1955, at 8.00 o'clock AM. and has been duly recorded in said office in Book No. 15 of Registration Statements on page GR-3599

Witness my hand this 15<sup>th</sup> day of September, 1959

*[Signature]*  
(State Engineer)

\$15.00

By \_\_\_\_\_ (Deputy)