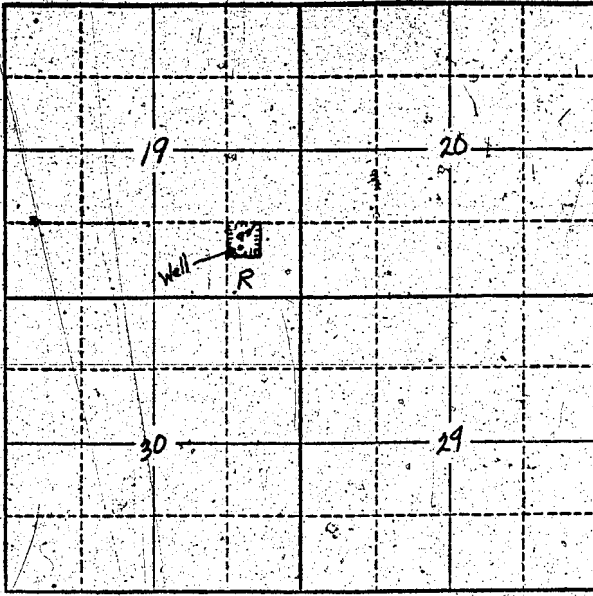


Township 1 South Range 1 West W.M.  
North



Well is under Southeast corner of school building.  
School grounds cover approximately 9 acres.

Locate well and acreage of irrigated land on plat.  
Scale: 2" = 1 Mile

STATE OF OREGON

County of Multnomah } ss.

I, Donald W. Wicher, Clerk of School District No. 94 of Washington County, being first duly sworn, do hereby certify that I have read the foregoing Registration Statement and that all of the items therein contained are true to the best of my knowledge and belief.

Donald W. Wicher  
(Signature of Registrant)

Subscribed and sworn to before me this 31st day of July, 1958

My commission expires 5/1/60

[Signature]  
(Notary Public)

NOTARY PUBLIC FOR OREGON  
My Commission Expires Feb. 7, 1960

(SEAL)

**CERTIFICATE OF REGISTRATION**

STATE OF OREGON } ss.  
County of Marion

This is to certify that the foregoing Registration Statement was received in the office of the State Engineer on the 4th day of August, 1958, at 8:00 o'clock A.M. and has been duly recorded in said office in Book No. 15 of Registration Statements on page GR 3651

Witness my hand this 20th day of October, 1959

[Signature]  
(State Engineer)

By \_\_\_\_\_ (Deputy)

\$15.00