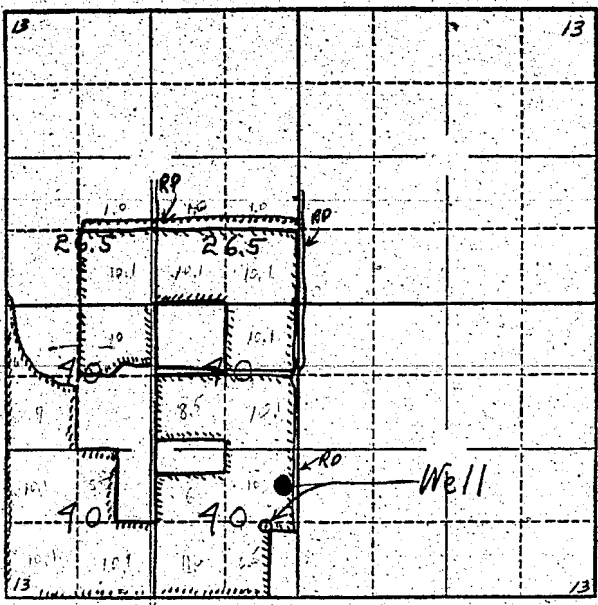


See attached Tracing
Section 13

Township 6 N. Range 35 E.W.M.
North



Locate well and acreage of irrigated land on plat.
Scale: 2" = 1 Mile

STATE OF OREGON }
County of Umatilla } ss.

I, F. G. Metz, being first duly sworn, do hereby certify that I have read the foregoing Registration Statement and that all of the items therein contained are true to the best of my knowledge and belief.

F. G. Metz
(Signature of Registrant)

Director of Grandview Irrigation Co.

Subscribed and sworn to before me this 22nd day of July, 1958.

My commission expires _____
Jessie M. Bell, County Clerk

(SEAL) By Dwain Masterson Deputy

CERTIFICATE OF REGISTRATION

STATE OF OREGON }
County of Marion } ss.

This is to certify that the foregoing Registration Statement was received in the office of the State Engineer on the 9 day of August, 1958, at 8:00 o'clock A.M. and has been duly recorded in said office in Book No. 15 of Registration Statements on page GR 3713

Witness my hand this 20th day of October, 1959

Lewis A. Stanley
(State Engineer)

By _____ (Deputy)

28.15