

GR-484

W.R. No. 423

C.S. 2962
4387
W.R. 422

W.V. HARRISON - WELL SURVEY SEC. 7 T. 12 S. R. 4 W.

LINN COUNTY

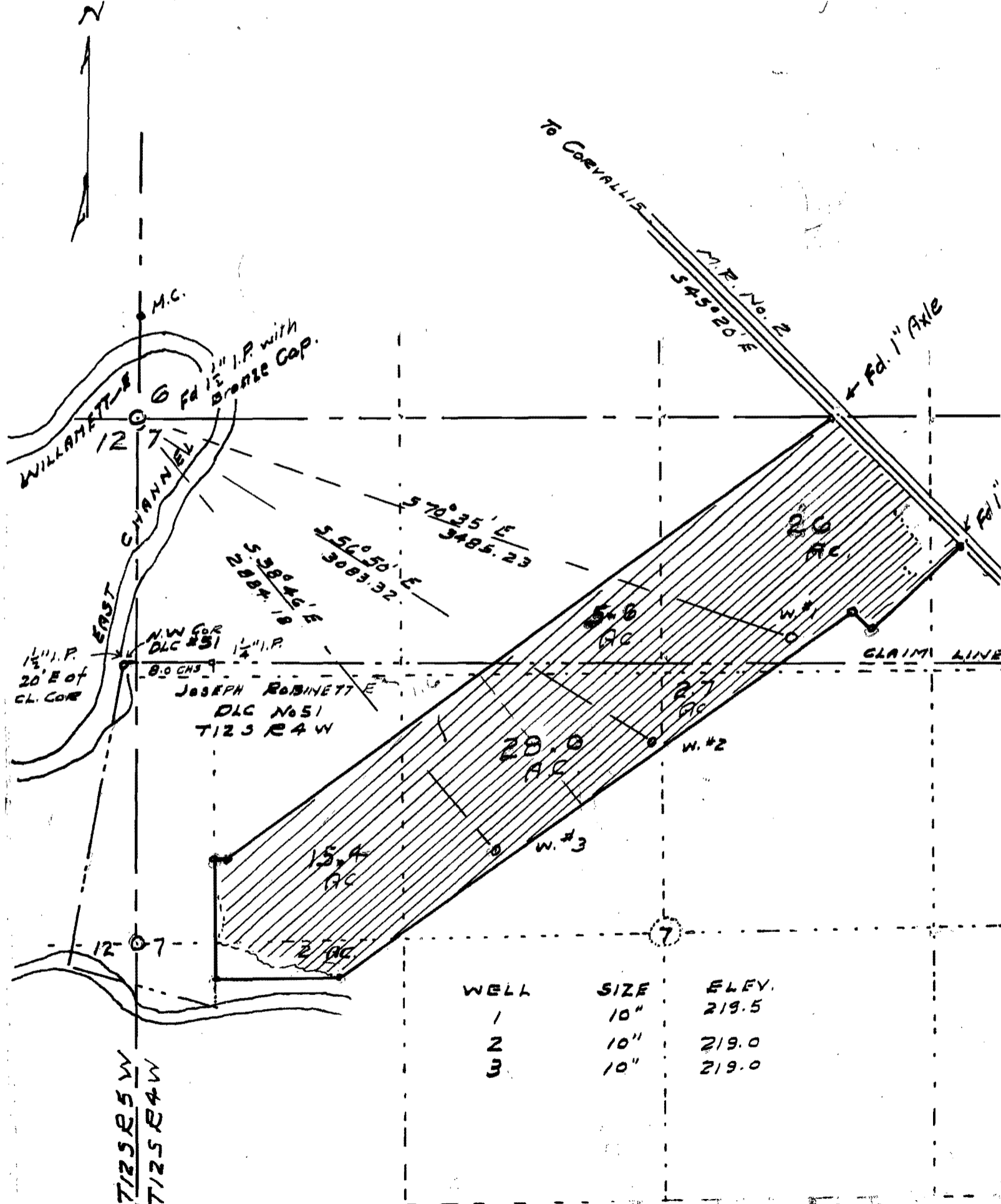
ORE

SCALE 1" = 600'



Jan. 15-21-1957

Harold W. Poling
Reg. Engr.



WELL	SIZE	ELEV.
1	10"	219.5
2	10"	219.0
3	10"	219.0

I, Harold W. Poling a Registered Engineer of Albany, Oregon, do hereby certify, that this map was made from notes taken during an actual survey made by me on January 15 and 21 1957; that monuments shown on this map are of the bearing and distances from the S.W. Corner of Section 6 T. 12 S. R. 4 W. W. 1/2 Sec. 7