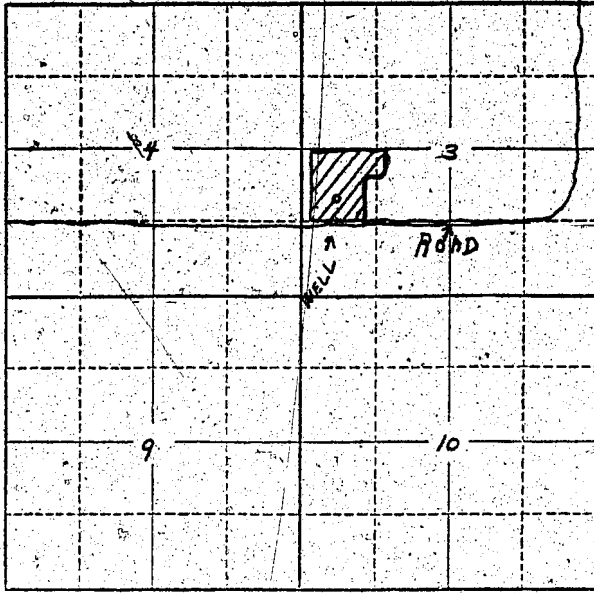


Township 5 South Range 1 West, W.M.  
North



Locate well and acreage of irrigated land on plat.  
Scale: 2" = 1 Mile

STATE OF OREGON

County of Marion } ss.

I, Ambrose J. Hee, being first duly sworn, do hereby certify that I have read the foregoing Registration Statement and that all of the items therein contained are true to the best of my knowledge and belief.

Ambrose J. Hee  
(Signature of Registrant)

Subscribed and sworn to before me this 2 day of February, 1956

My commission expires 9/27/58  
Jeanette Baxter  
(Notary Public)

(SEAL)

**CERTIFICATE OF REGISTRATION**

STATE OF OREGON

County of Marion } ss.

This is to certify that the foregoing Registration Statement was received in the office of the State Engineer on the 12<sup>th</sup> day of December, 1955, at 10:30 o'clock A. M. and has been duly recorded in said office in Book No. 1 of Registration Statements on page GR-81C.

Construction shall be completed by 1956, and the water completely applied to beneficial use by 1956.

Witness my hand this 12<sup>th</sup> day of April, 1956.  
Lewis A. Attenley  
(State Engineer)

By \_\_\_\_\_  
(Deputy)