

Township 4S Range 4W W.M.
North

						H(1)
				36		

Locate well and acreage of irrigated land on plat.

Scale: 2" = 1 Mile

STATE OF OREGON

County of Marion Co } ss.

I, _____, being first duly sworn, do hereby certify that I have read the foregoing Registration Statement and that all of the items therein contained are true to the best of my knowledge and belief.

(Signature of Registrant)

Subscribed and sworn to before me this 7th day of February, 1958

My commission expires 12th June 1961

Wm. S. Baitholmeau
(Notary Public)

(SEAL)

CERTIFICATE OF REGISTRATION

STATE OF OREGON

County of Marion } ss.

This is to certify that the foregoing Registration Statement was received in the office of the State Engineer on the _____ day of February, 1958, at 4:00 o'clock A.M. and has been duly recorded in said office in Book No. 5 of Registration Statements on page 950

Witness my hand this 7 day of May, 1958

Lewis O. Blodgett
(State Engineer)

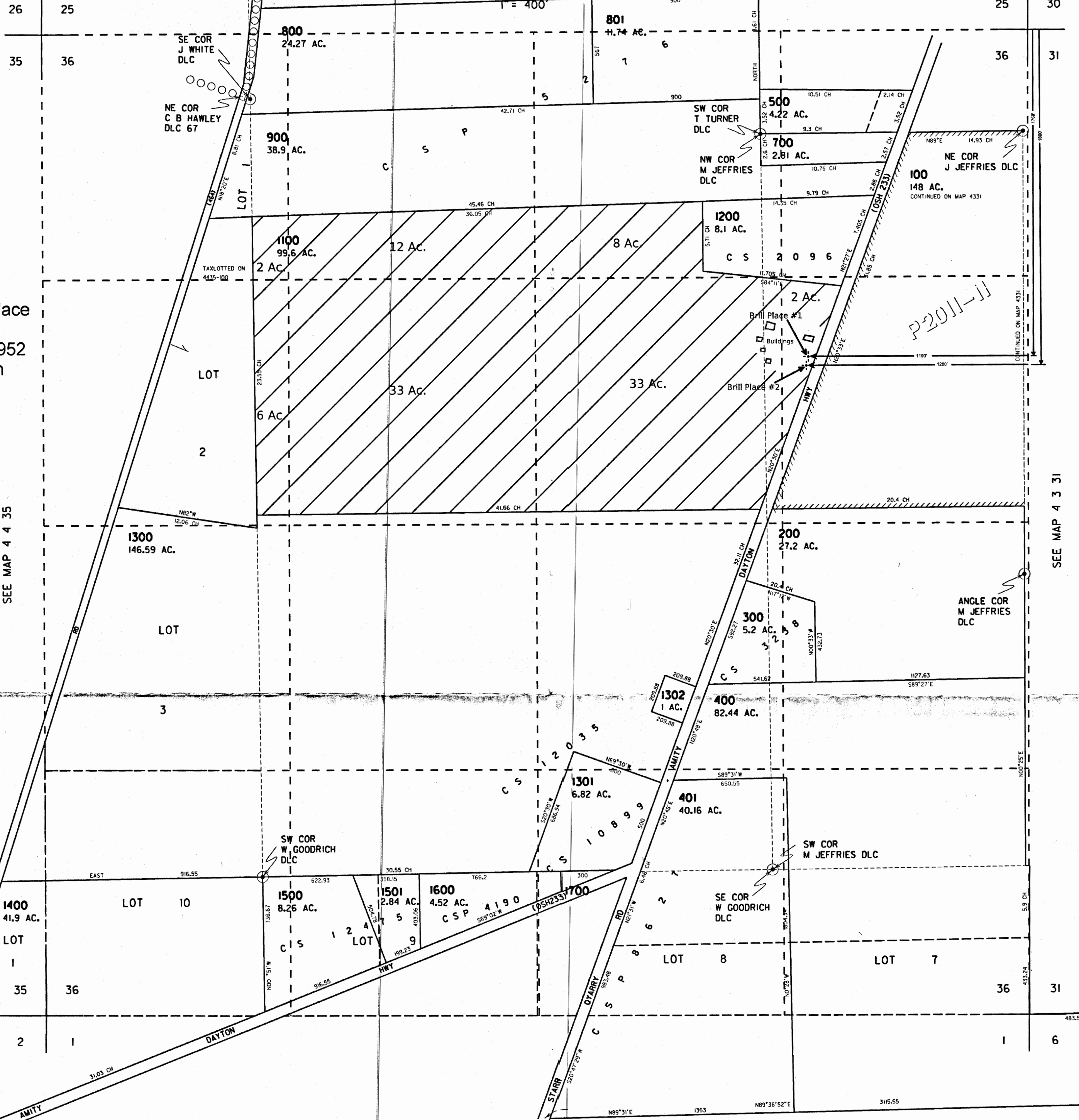
By _____
(Deputy)

GR - 950 C

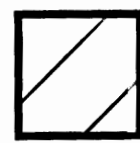
SECTION 36 T4S R4W W.M.
YAMHILL COUNTY

SEE MAP 4 4 25

THIS MAP WAS PREPARED FOR
ASSESSMENT PURPOSE ONLY



Legend



Claim GR-980 Place
of Use
Priority: 10/27/1952
Use: Irrigation

CANCELLED
600
1000 REF

SEE MAP 4 3 31

SEE MAP 4 4 35

T 12045

SEE MAP 5 4 01

RECEIVED

APR 21 2015

WATER RESOURCES DEPT
SALEM, OREGON

REVISED 6-6-11 SB

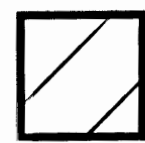
THIS MAP WAS PREPARED FOR ASSESSMENT PURPOSE ONLY

SECTION 36 T4S R4W W.M. YAMHILL COUNTY

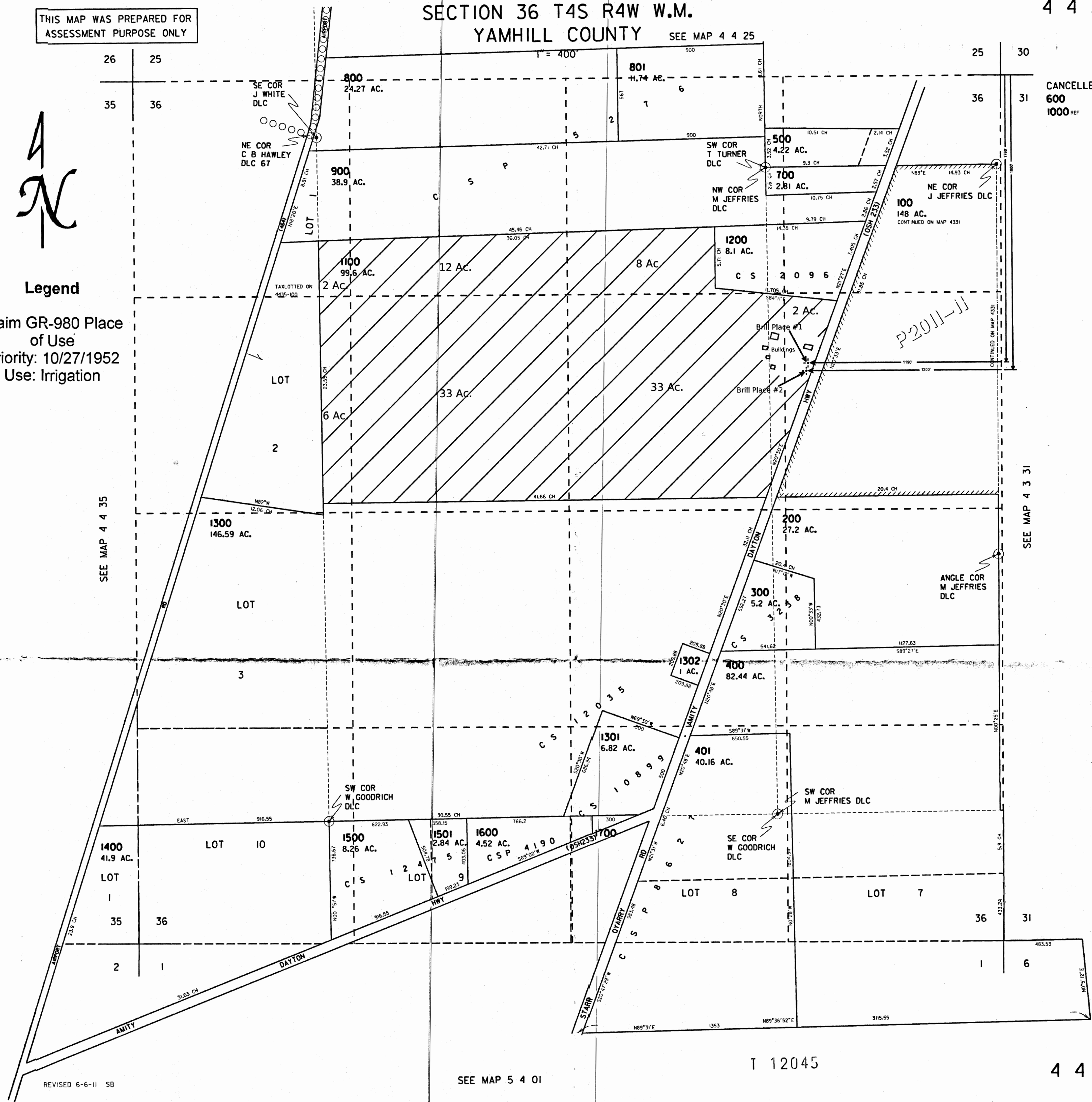
SEE MAP 4 4 25



Legend



Claim GR-980 Place of Use
Priority: 10/27/1952
Use: Irrigation



CANCELLED
600
1000 REF

SEE MAP 4 3 31

SEE MAP 4 4 35

REVISED 6-6-11 SB

SEE MAP 5 4 01

T 12045

RECEIVED

APR 21 2015

WATER RESOURCES DEPT
SALEM, OREGON