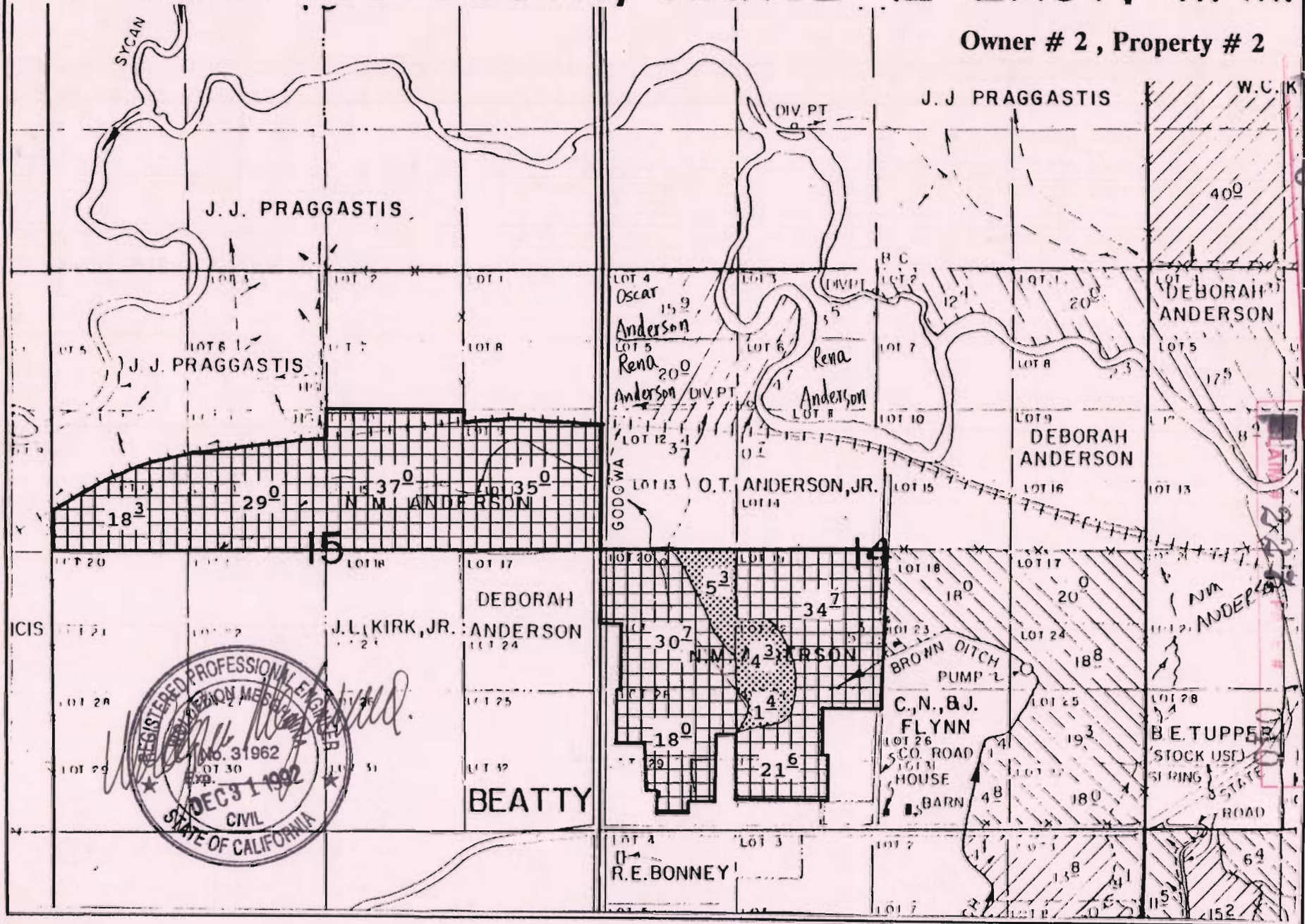


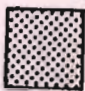
TOWNSHIP 36 SOUTH, RANGE 12 EAST, W. M.


Owner # 2, Property # 2



WITH ADJUSTMENT
 676 PAGE #
 009 CLAMATH ADJUSTMENT



 Presently Irrigated Land

 Practically Irrigable Acreage

By: Natural Resources Consulting Engineers Inc.
 1250 Addison St., Suite 204
 Berkeley, Ca. 94702
 Berkeley (510)841-7814

