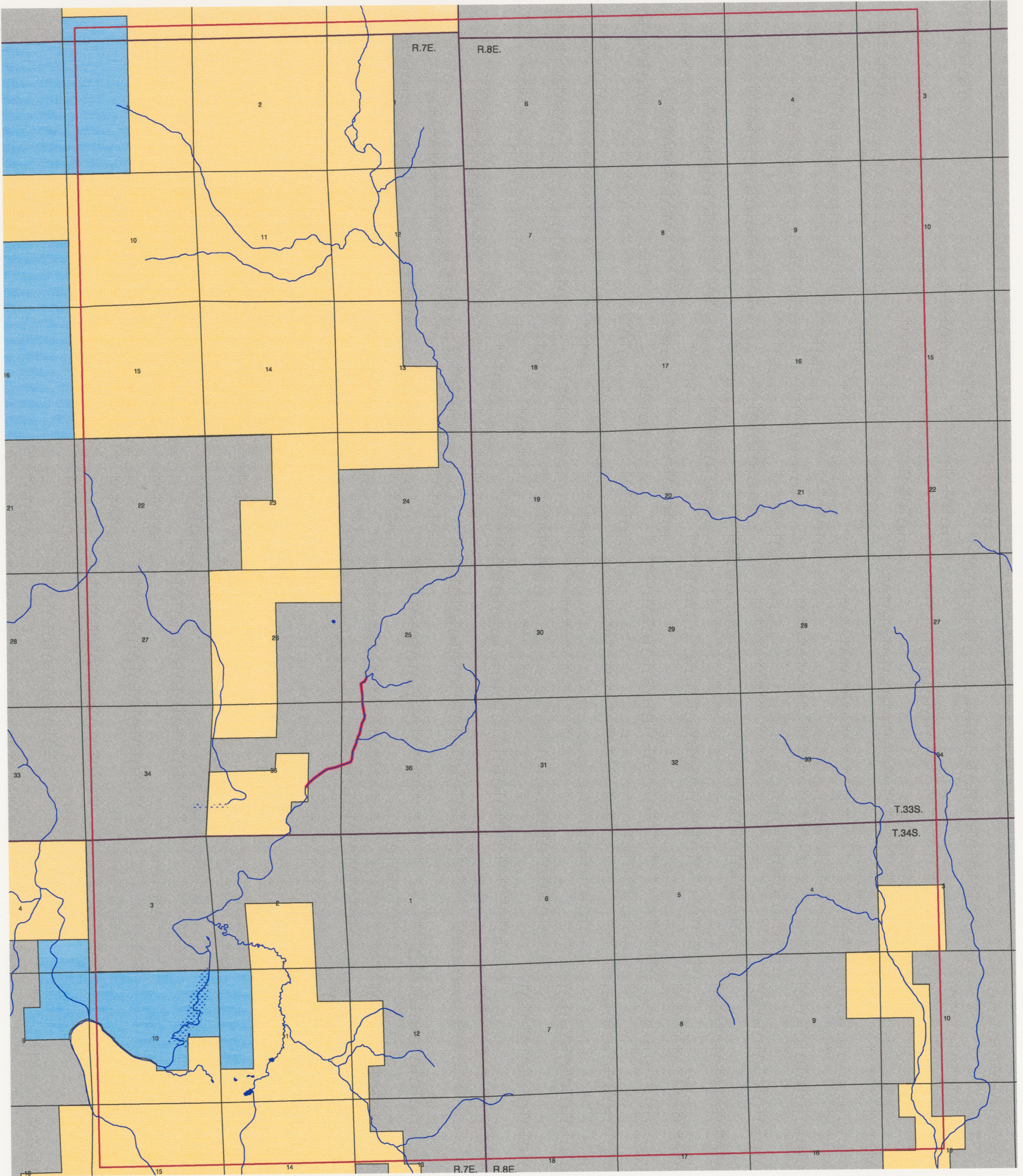


National Forest Instream Flow Claim Organic Act (Favorable Flow) Williamson River - Upper Larkin Reach Soloman Butte Quadrangle



97 609 0067

97 609 26



1:24000

- Streams
- Williamson River @ Larkin-Upper Reach Instream Flow Reach
- Lakes/Ponds
- Marshes
- Soloman Butte Boundary
- Township/Range
- Section
- Ownership Boundary**
- Fremont National Forest
- National Park
- Private Land
- State Land
- Winema National