



97 628 0020

97 628 0020

PRODUCED BY THE UNITED STATES GEOLOGICAL SURVEY
CONTROL BY USGS, NOS/NMMA
COMPILED FROM AERIAL PHOTOGRAPHS TAKEN 1961-82
FIELD CHECKED 1982 MAP EDITED 1985
PROJECTION LAMBERT CONFORMAL CONIC
GRID: 1000-METER UNIVERSAL TRANSVERSE MERCATOR ZONE 10
10,000-FOOT STATE GRID TICKS OREGON SOUTH ZONE
UTM GRID DECLINATION 1890° EAST
1980 MAGNETIC NORTH DECLINATION 0°35' EAST
VERTICAL DATUM NATIONAL GEODETIC VERTICAL DATUM OF 1929
HORIZONTAL DATUM 1927 NORTH AMERICAN DATUM
To place on the predicted North American Datum of 1983,
move the projection lines as shown by dashed corner ticks
(20 meters north / 93 meters east)
There may be private inholdings within the boundaries of any
Federal and State Reservations shown on this map
Where omitted, land lines have not been established

SCALE 1:24 000

1 000 5 000 10 000 15 000 20 000
KILOMETERS

1 000 2000 3000 4000 5000 6000 7000 8000 9000 10 000
METERS

1 0 1 2 3 4 5 6 7 8
MILES

QUADRANGLE LOCATION

1	2	3	Garwood Butte
4	5	6	Crater Lake West
7	8	9	Crater Lake East

CONTOUR INTERVAL 20 FEET
SUPPLEMENTARY CONTOUR INTERVAL 10 FEET
CONTROL ELEVATIONS SHOWN TO THE NEAREST FOOT
OTHER ELEVATIONS SHOWN TO THE NEAREST FOOT
To convert meters to feet multiply by 3.2808
To convert feet to meters multiply by 0.3048

ROAD LEGEND

Improved Road
Unimproved Road
Trail
Interstate Route U.S. Route State Route

PUMICE DESERT WEST, OREG.
PROVISIONAL EDITION 1985

CRLA

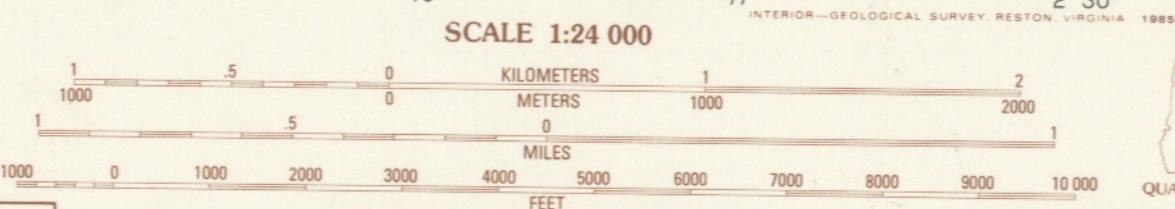


97 628 0022

97 628 0022

PRODUCED BY THE UNITED STATES GEOLOGICAL SURVEY
CONTROL BY USGS, NOS/NOAA
COMPILED FROM AERIAL PHOTOGRAPHS TAKEN 1981-82
FIELD CHECKED 1982. MAP EDITED 1985
PROJECTION LAMBERT CONFORMAL CONIC
GRID: 1000-METER UNIVERSAL TRANSVERSE MERCATOR ZONE 10
10,000-FOOT STATE GRID TICKS OREGON, SOUTH ZONE
UTM GRID DECLINATION 1983 EAST
1980 MAGNETIC NORTH DECLINATION 18°30' EAST
VERTICAL DATUM NATIONAL GEODETIC VERTICAL DATUM OF 1929
HORIZONTAL DATUM 1927 NORTH AMERICAN DATUM
To place on the predicted North American Datum of 1983,
move the projection lines as shown by dashed corner ticks
(20 meters north / 93 meters east)
There may be private inholdings within the boundaries of any
Federal and State Reservations shown on this map
Land lines have not been established in this area

PROVISIONAL MAP
Produced from original
manuscript drawings.
Information shown as of date of
photography.



1	2	3
4	5	6
7	8	

1 Diamond Lake
2 Mount Thielsen
3 Miller Lake
4 Pumice Desert West
5 Welch Butte
6 Crater Lake West
7 Crater Lake East
8 Pothole Butte

ROAD LEGEND
Improved Road
Unimproved Road
Trail
Interstate Route
U.S. Route
State Route

PUMICE DESERT EAST, OREG.
PROVISIONAL EDITION 1985

CRLA



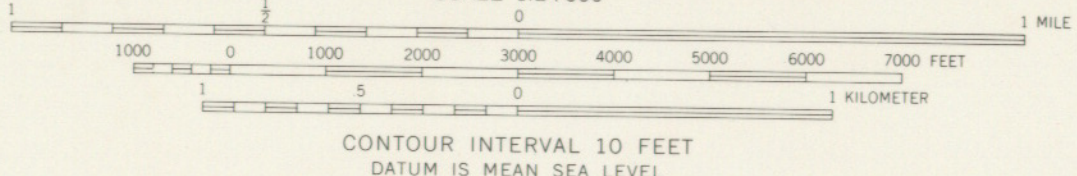
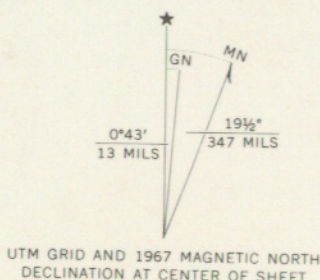
97 628 0021

1980 Priority Area

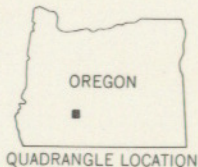
1886/1902 Priority Area

97 628 0021

Mapped, edited, and published by the Geological Survey
Control by USGS and USC&GS
Topography by photogrammetric methods from aerial
photographs taken 1963. Field checked 1967
Polyconic projection. 1927 North American datum
10,000-foot grid based on Oregon coordinate system,
south zone
1000-meter Universal Transverse Mercator grid ticks,
zone 10, shown in blue
Where omitted, land lines have not been established



CONTOUR INTERVAL 10 FEET
DATUM IS MEAN SEA LEVEL



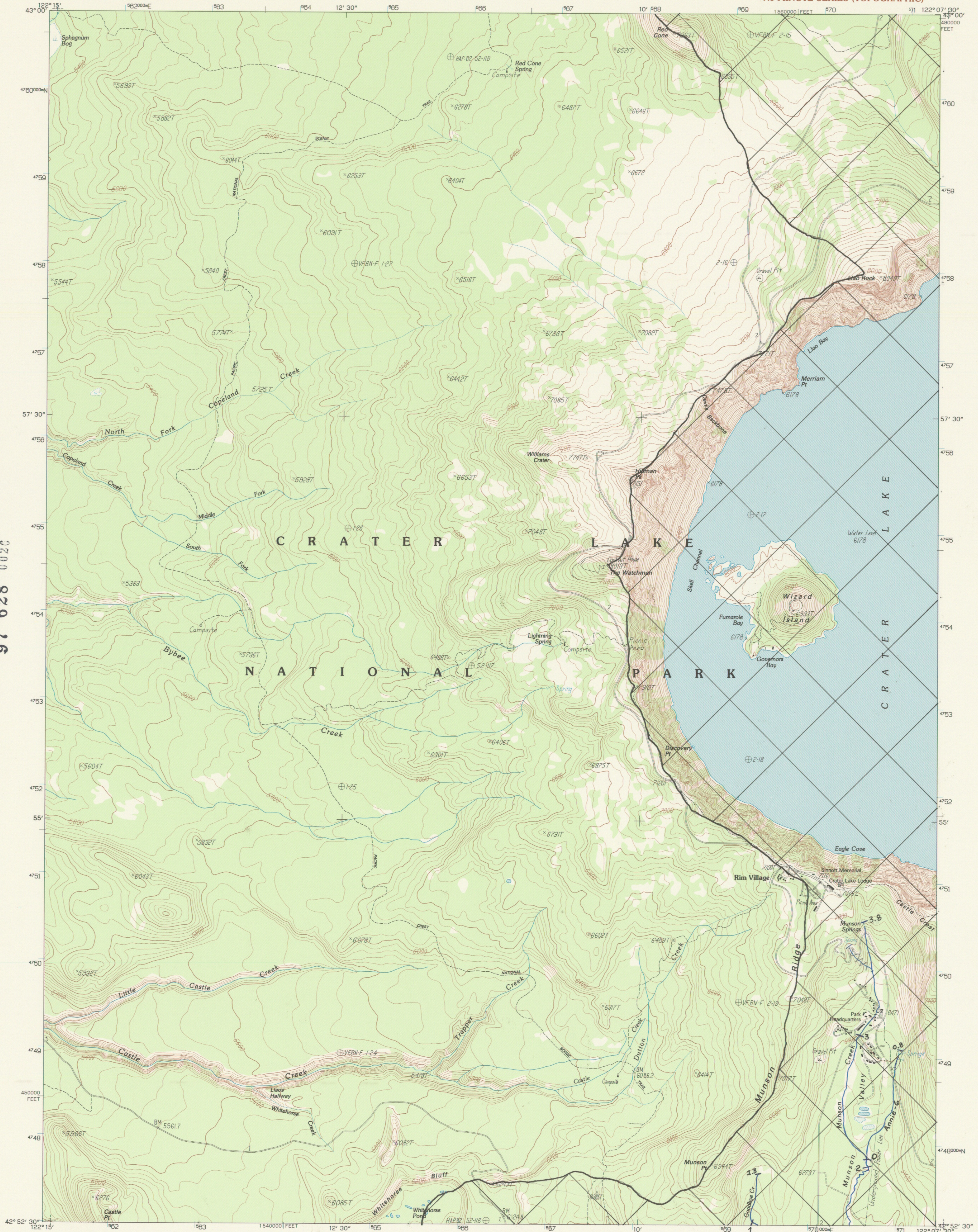
ROAD CLASSIFICATION
Medium-duty ——— Light-duty ———
Unimproved dirt - - - - -
State Route ○

THIS MAP COMPLIES WITH NATIONAL MAP ACCURACY STANDARDS
FOR SALE BY U.S. GEOLOGICAL SURVEY, DENVER, COLORADO 80225, OR WASHINGTON, D. C. 20242
A FOLDER DESCRIBING TOPOGRAPHIC MAPS AND SYMBOLS IS AVAILABLE ON REQUEST

97 628 0021

WELCH BUTTE, OREG.
N4300-W12152.5/7.5
1967
AMS 1870 III SW-SERIES V892

CRLA

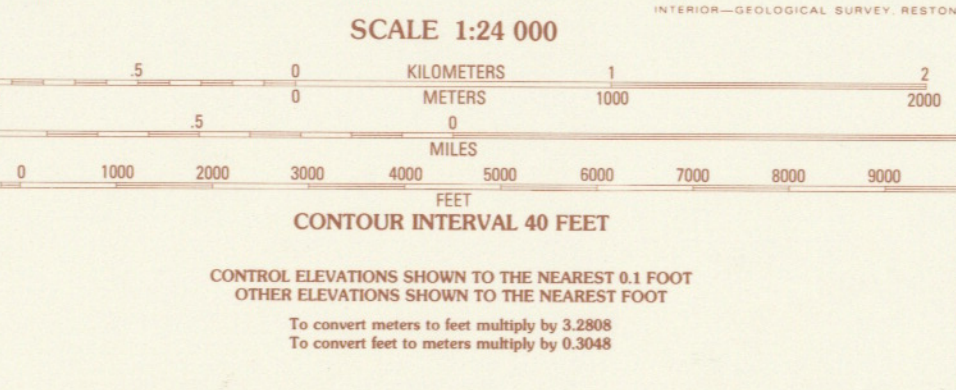


97 628 0026

97 628 0026

PRODUCED BY THE UNITED STATES GEOLOGICAL SURVEY
CONTROL BY USGS, NOS/NOAA
COMPILED FROM AERIAL PHOTOGRAPHS TAKEN 1981-82
FIELD CHECKED 1982. MAP EDITED 1985
PROJECTION LAMBERT CONFORMAL CONIC
BLUE 1000-METER UNIVERSAL TRANSVERSE MERCATOR TICS... ZONE 10
11000-FOOT STATE GRID TICKS OREGON, SOUTH ZONE
UTM GRID DECLINATION 0°33' EAST
1980 MAGNETIC NORTH DECLINATION 18°30' EAST
VERTICAL DATUM NATIONAL GEODETIC VERTICAL DATUM OF 1929
HORIZONTAL DATUM NORTH AMERICAN DATUM OF 1927 (NAD 27)
The values of the shift between NAD 27 and NAD 83 for 7.5-minute intersections are
obtainable from National Geographic Survey NADCON software.
There may be private inholdings within the boundaries of any Federal and State
reservations shown on this map.
No distinction made between houses, barns, and other buildings.
Land lines have not been established in this area.

PROVISIONAL MAP
Produced from original
manuscript drawings. Informa-
tion shown as of date of
photography.



ROAD LEGEND

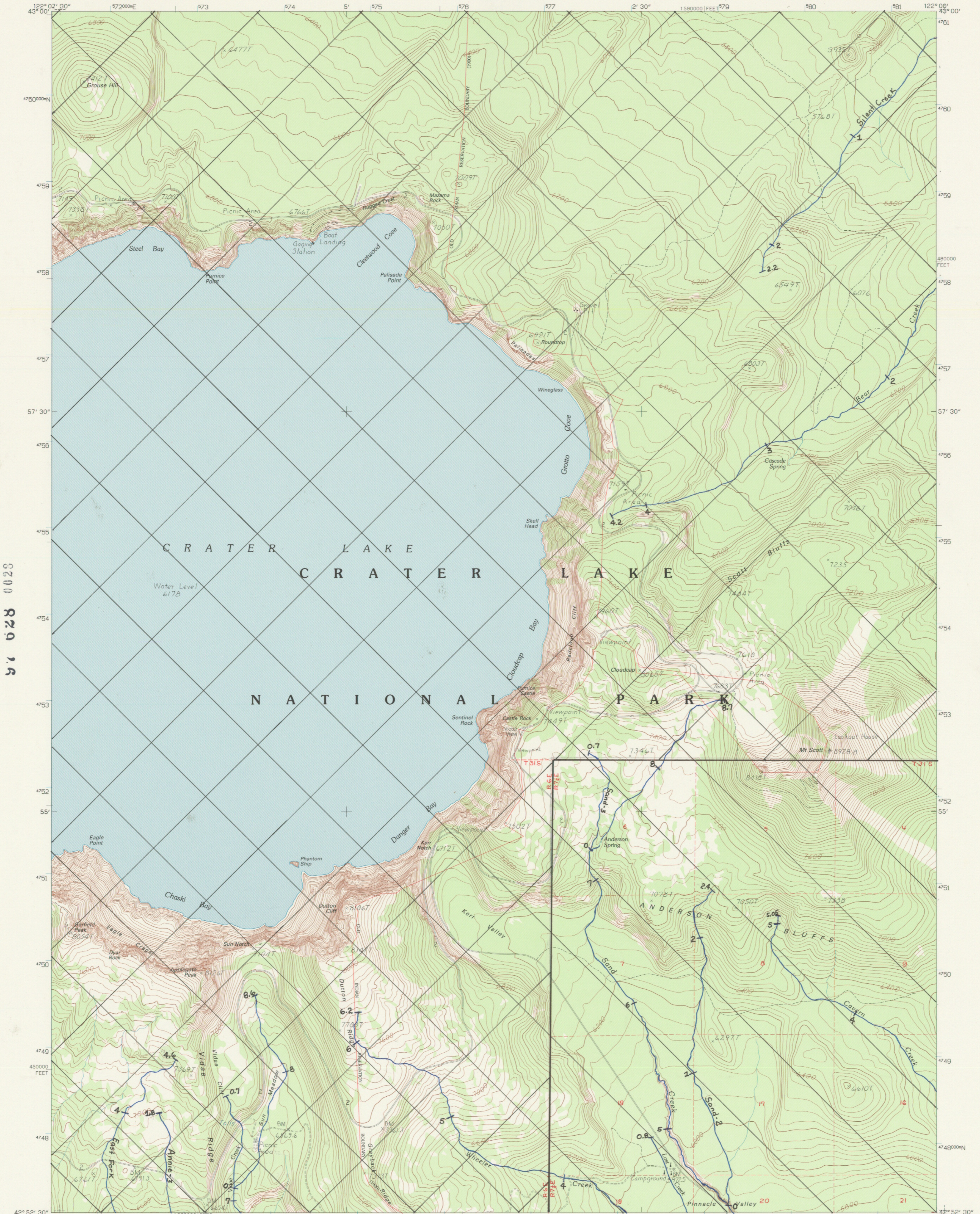
Improved Road
Unimproved Road
Trail

Interstate Route U.S. Route State Route

1	2	3	4	5	6	7	8
1	2	3	4	5	6	7	8

1 Hamaker Butte
2 Pumice Desert West
3 Pumice Desert East
4 Thousand Springs
5 Crater Lake East
6 Red Blanket Mtn.
7 Union Peak
8 Makiaks Crater

CRATER LAKE WEST, OR
PROVISIONAL EDITION 1985

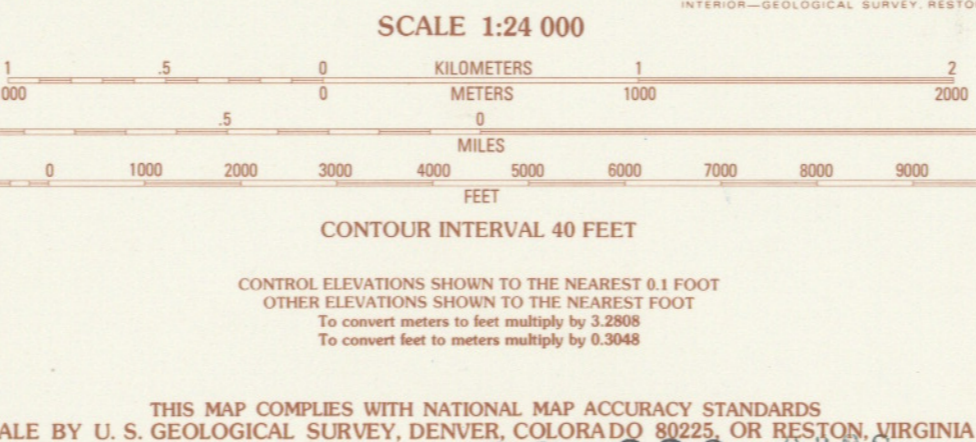


97 628 0028

97 628 0028

PRODUCED BY THE UNITED STATES GEOLOGICAL SURVEY CONTROL BY USGS, NOS/NOAA COMPILED FROM AERIAL PHOTOGRAPHS TAKEN 1981-82 FIELD CHECKED 1982. MAP EDITED 1985 PROJECTION LAMBERT CONFORMAL CONIC BLUE 1000-METER UNIVERSAL TRANSVERSE MERCATOR TICS, ZONE 10 10 000-FOOT STATE GRID TICS OREGON, SOUTH ZONE UTM GRID DECLINATION 0°38' EAST 1980 MAGNETIC NORTH DECLINATION 18°30' EAST VERTICAL DATUM NATIONAL GEODETIC VERTICAL DATUM OF 1929 HORIZONTAL DATUM NORTH AMERICAN DATUM OF 1927 (NAD 27) North American Datum of 1983 (NAD 83) is shown by dashed corner ticks. The values of the shift between NAD 27 and NAD 83 for 7.5-minute intersections are obtainable from National Geographic Survey NADCON software. There may be private inholdings within the boundaries of any Federal and State reservations shown on this map. Where omitted, land lines have not been established.

PROVISIONAL MAP
Produced from original manuscript drawings. Information shown as of date of photography.



ROAD LEGEND

Improved Road.....
Unimproved Road.....
Trail.....

Interstate Route U.S. Route State Route

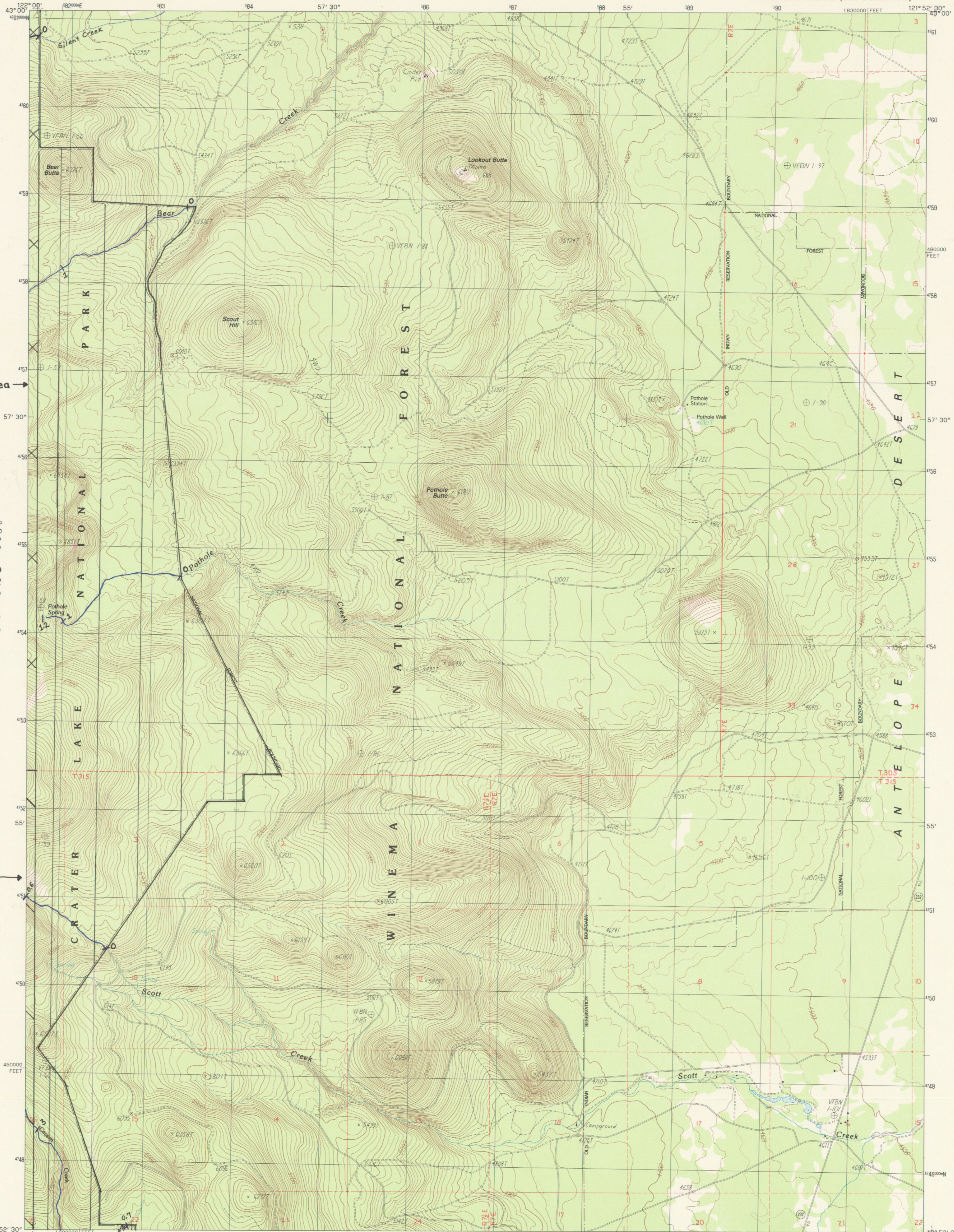
1	2	3	4	5	6	7	8
1	2	3	4	5	6	7	8

QUADRANGLE LOCATION

ADJOINING 7.5 QUADRANGLE NAMES

CRATER LAKE EAST, OR
PROVISIONAL EDITION 1985

42122-HI-TF-024



1886/1902 Priority Area

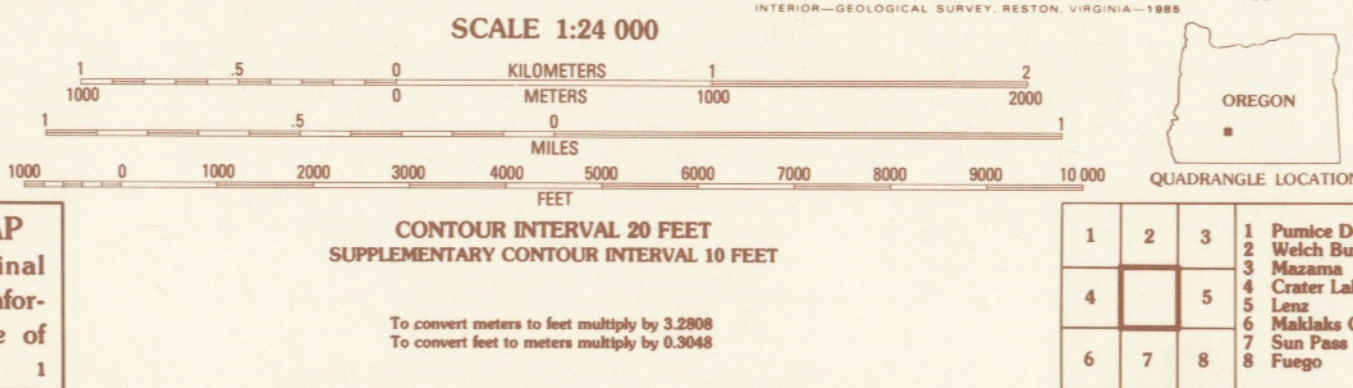
1902 Priority Area

97 628 0030

97 628 0030

PRODUCED BY THE UNITED STATES GEOLOGICAL SURVEY
CONTROL BY USGS, NOS/NOAA
COMPILED FROM AERIAL PHOTOGRAPHS TAKEN 1981-82
FIELD CHECKED 1982. MAP EDITED 1985
PROJECTION LAMBERT CONFORMAL CONIC
GRID: 1000-METER UNIVERSAL TRANSVERSE MERCATOR ZONE 10
30,000-FOOT STATE GRID TICKS OREGON SOUTH ZONE
UTM GRID DECLINATION 1983 EAST
1983 MAGNETIC NORTH DECLINATION 18°50' EAST
VERTICAL DATUM NATIONAL GEODETIC VERTICAL DATUM OF 1929
HORIZONTAL DATUM 1983 NORTH AMERICAN DATUM
To place on the predicted North American Datum of 1983,
move the projection lines as shown by dashed corner ticks
(20 meters north / 93 meters east)
There may be private inholdings within the boundaries of any
Federal and State Reservations shown on this map
Where omitted, land lines have not been established
No distinction made between houses, barns and other buildings

PROVISIONAL MAP
Produced from original
manuscript drawings. Infor-
mation shown as of date of
photography.

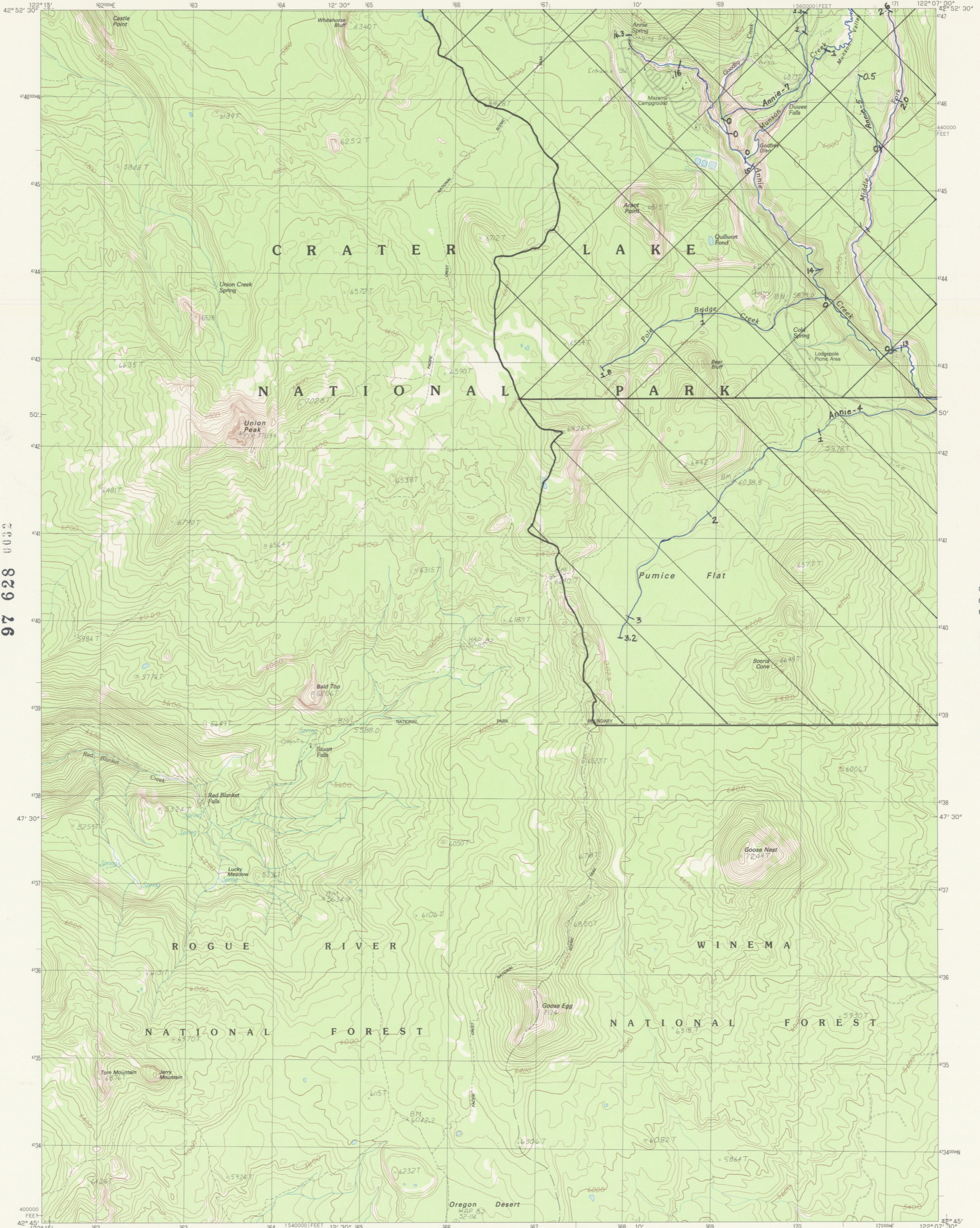


ROAD LEGEND
Improved Road.....
Unimproved Road.....
Trail.....
○ Interstate Route ○ U.S. Route ○ State Route

POTHOLE BUTTE, OREG.
PROVISIONAL EDITION 1985

THIS MAP COMPLIES WITH NATIONAL MAP ACCURACY STANDARDS
FOR SALE BY U.S. GEOLOGICAL SURVEY, DENVER, COLORADO 80225, OR RESTON, VIRGINIA 22092

CRLA



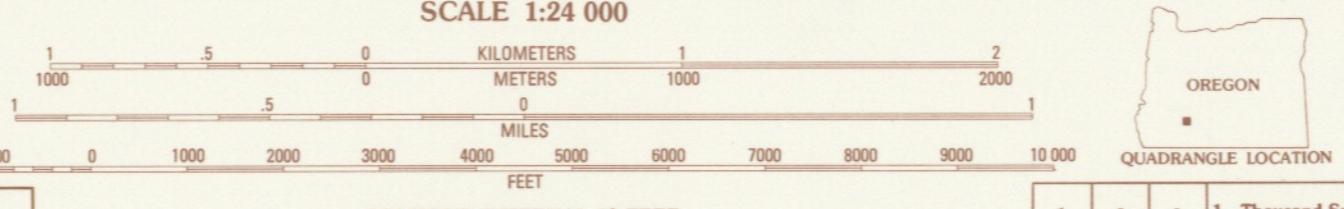
97 628 0032

97 628 0032

PRODUCED BY THE UNITED STATES GEOLOGICAL SURVEY
CONTROL BY USGS, NOS/NOAA
COMPILED FROM AERIAL PHOTOGRAPHS TAKEN 1981-82
FIELD CHECKED 1982. MAP EDITED 1985
PROJECTION LAMBERT CONFORMAL CONIC
GRID: 1000-METER UNIVERSAL TRANSVERSE MERCATOR ZONE 10
10,000-FOOT STATE GRID TICKS OREGON, SOUTH ZONE
UTM GRID DECLINATION 0°33' EAST
1980 MAGNETIC NORTH DECLINATION 18°59' EAST
VERTICAL DATUM NATIONAL GEODETIC VERTICAL DATUM OF 1929
HORIZONTAL DATUM 1927 NORTH AMERICAN DATUM
To place on the predicted North American Datum of 1983,
move the projection lines as shown by dashed corner ticks
(20 meters north / 94 meters east.)
There may be private inholdings within the boundaries of any
Federal and State Reservations shown on this map
Land lines have not been established in this area
No distinction made between houses, barns, and other buildings

PROVISIONAL MAP
Produced from original
manuscript drawings. Infor-
mation shown as of date of
photography.

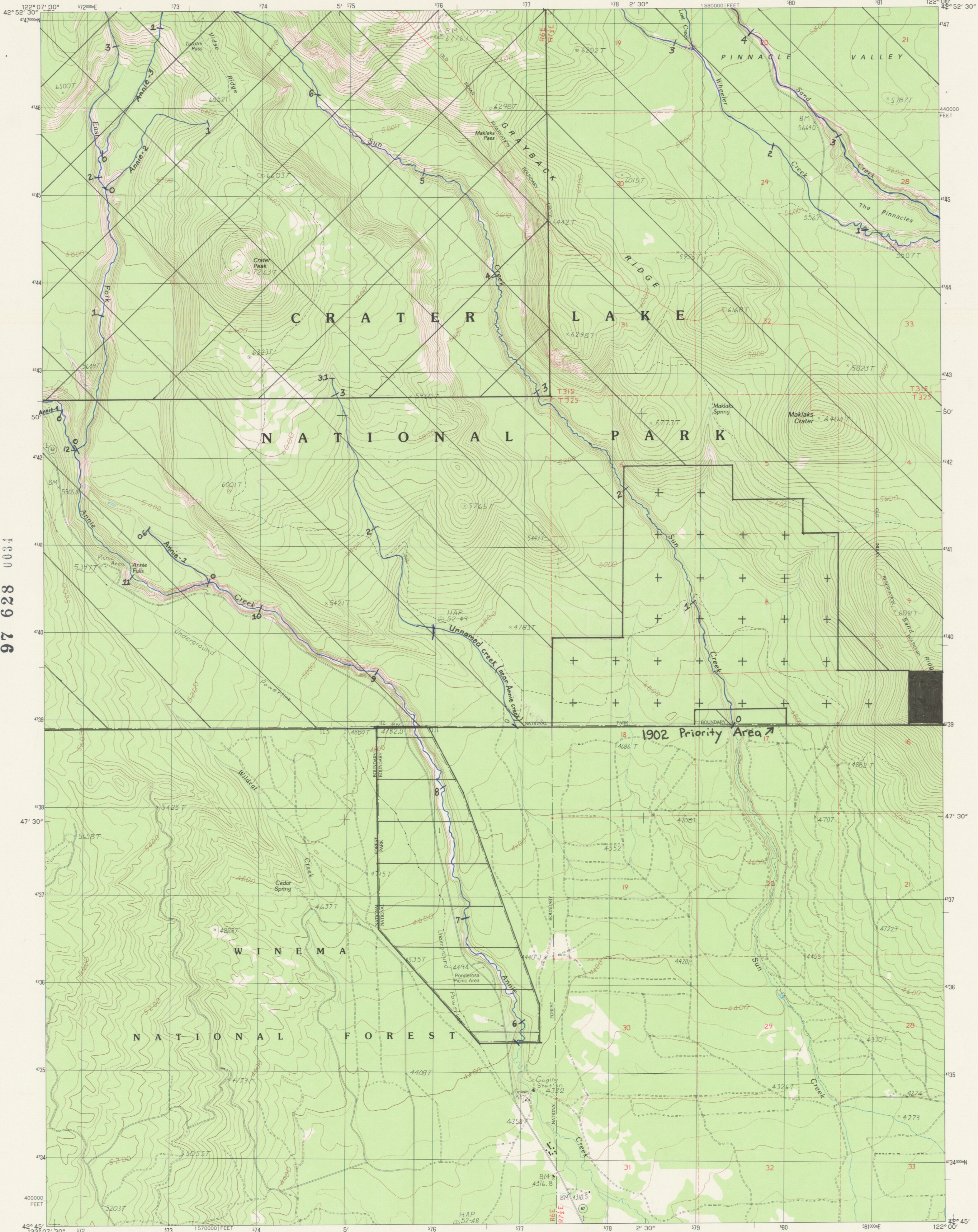
SCALE 1:24 000
CONTOUR INTERVAL 40 FEET
SUPPLEMENTARY CONTOUR INTERVAL 20 FEET
CONTROL ELEVATIONS SHOWN TO THE NEAREST 0.1 FOOT
OTHER ELEVATIONS SHOWN TO THE NEAREST FOOT
To convert meters to feet multiply by 3.2808
To convert feet to meters multiply by 0.3048



ROAD LEGEND
Improved Road
Unimproved Road
Trail
Interstate Route U.S. Route State Route

1	2	3	1 Thousand Springs
2	3	4	2 Crater Lake West
3	4	5	3 Crater Lake East
4	5	6	4 Red Blanka Mtn.
5	6	7	5 Makahu Crater
6	7	8	6 Imnaha Creek
7	8		7 Devils Peak
8			8 Mares Egg Spring

UNION PEAK, OREG.
PROVISIONAL EDITION 1985

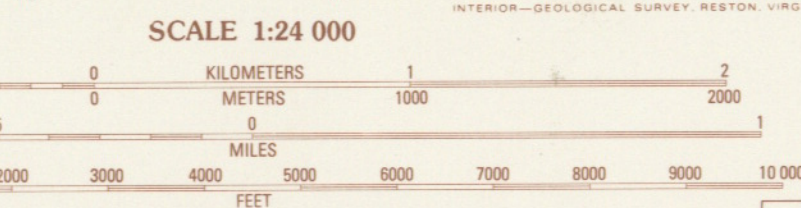


97 628 0031

97 628 26

PRODUCED BY THE UNITED STATES GEOLOGICAL SURVEY
CONTROL BY USGS, NOS/NOAA
COMPILED FROM AERIAL PHOTOGRAPHS TAKEN 1981-82
FIELD CHECKED 1982. MAP EDITED 1985
PROJECTION LAMBERT CONFORMAL CONIC
GRID 100-METER UNIVERSAL TRANSVERSE MERCATOR ZONE 10
10,000-FOOT STATE GRID TICKS OREGON, SOUTH ZONE
UTM GRID DECLINATION 0°38' EAST
1980 MAGNETIC NORTH DECLINATION 18°30' EAST
HORIZONTAL DATUM NATIONAL GEODETIC VERTICAL DATUM OF 1929
VERTICAL DATUM 1927 NORTH AMERICAN DATUM
To place on the predicted North American Datum of 1983,
move the projection lines as shown by dashed corner ticks
(20 meters north / 93 meters east).
There may be private inholdings within the boundaries of any
Federal and State Reservations shown on this map
Where omitted, land lines have not been established
No distinction made between houses, barns, and other buildings

PROVISIONAL MAP
Produced from original
manuscript drawings. Informa-
tion shown as of date of
photography.

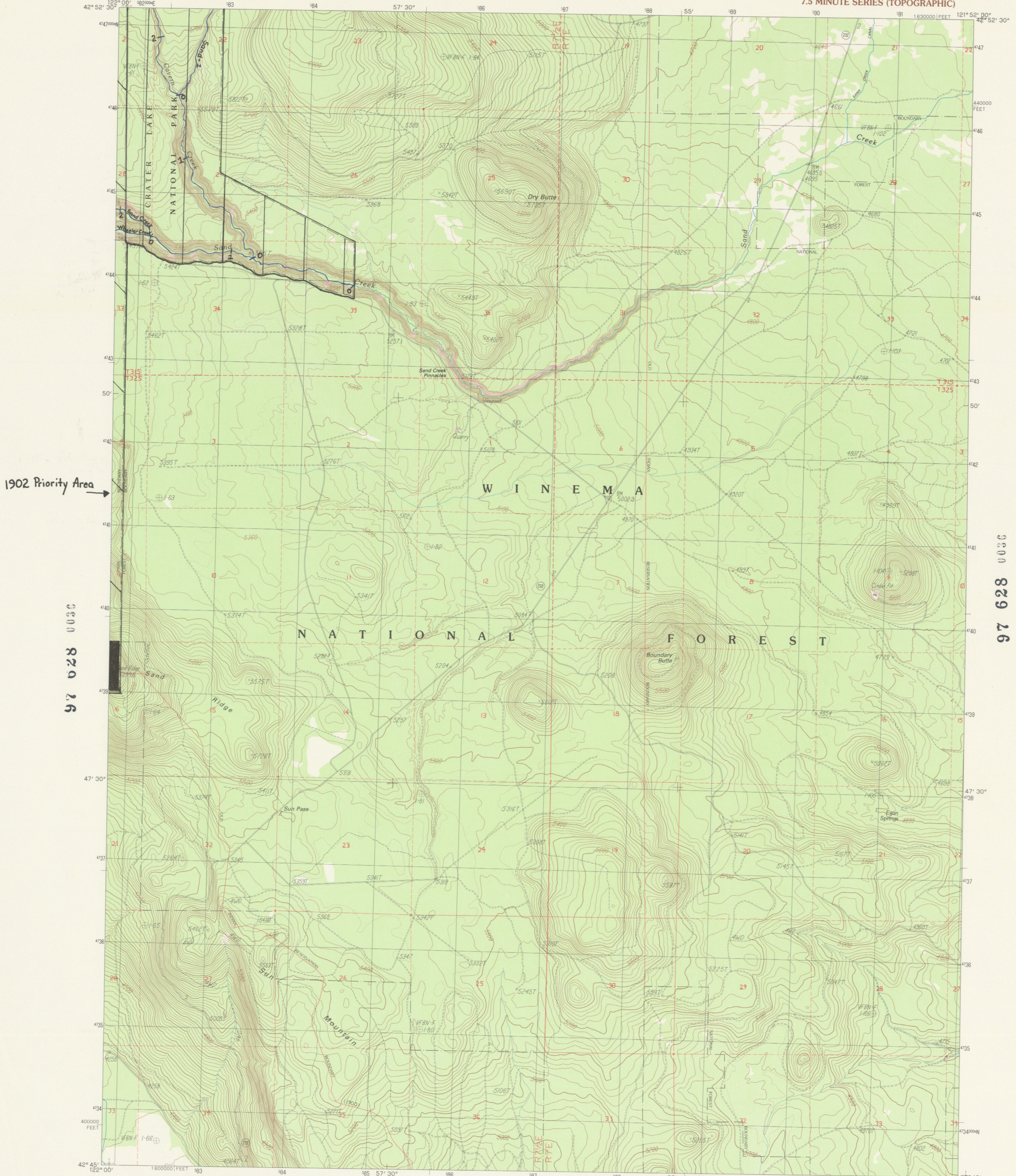


ROAD LEGEND

Improved Road
Unimproved Road
Trail
Interstate Route
U.S. Route
State Route

1	2	3	1	Crater Lake West
2	3	4	2	Crater Lake East
3	4	5	3	Pothole Butte
4	5	6	4	Union Peak
5	6	7	5	Sun Pass
6	7	8	6	Devils Peak
7	8	9	7	Mares Egg Spring
8	9	10	8	Fort Klamath

MAKLAKS CRATER, OREG.
PROVISIONAL EDITION 1985



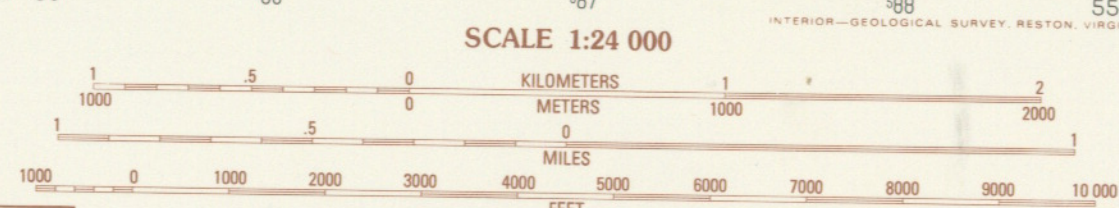
1902 Priority Area →

97 628 0030

97 628 0030

PRODUCED BY THE UNITED STATES GEOLOGICAL SURVEY
CONTROL BY AERIAL PHOTOGRAPHS TAKEN 1981-82
FIELD CHECKED 1982. MAP EDITED 1985
PROJECTION: LAMBERT CONFORMAL CONIC
GRID: 1000-METER UNIVERSAL TRANSVERSE MERCATOR, ZONE 18
10,000-FOOT STATE GRID TICS
UTM GRID DECLINATION: OREGON, SOUTH ZONE
1980 MAGNETIC NORTH DECLINATION: 1980 EAST
VERTICAL DATUM: NATIONAL GEODETIC VERTICAL DATUM OF 1929
HORIZONTAL DATUM: 1927 NORTH AMERICAN DATUM
To place on the predicted North American Datum of 1983,
move the projection lines as shown by dashed corner ticks
(20 meters north / 93 meters east)
There may be private inholdings within the boundaries of any
Federal and State Reservations shown on this map

PROVISIONAL MAP
Produced from original
manuscript drawings. Infor-
mation shown as of date of
photography.



CONTOUR INTERVAL 20 FEET
SUPPLEMENTARY CONTOUR INTERVAL 10 FEET
CONTOUR ELEVATIONS SHOWN TO THE NEAREST 0.1 FOOT
OTHER ELEVATIONS SHOWN TO THE NEAREST FOOT
To convert meters to feet multiply by 3.2808
To convert feet to meters multiply by 0.3048

1	2	3	4	5	6	7	8
Crater Lake East	Pothole Butte	Lenz	Maklaka Crater	Fuego	Mares Egg Spring	Fort Klamath	Solomon Butte



ROAD LEGEND
Improved Road
Unimproved Road
Trail
Interstate Route
U.S. Route
State Route

SUN PASS, OREG.
PROVISIONAL EDITION 1985