

| |
|--|
| UPPER REACH BOUNDARY |
| Latitude: 42° 31' 30.43" |
| Longitude: 121° 53' 3.59" |
| T 35S, R 7E, S 21, SW 1/4, NE 1/4 |
| Distance/Bearing/Azimuth: From NE corner S 47° 12' 29" W, 923.7m, 227° 12' 29" |
| LOWER REACH BOUNDARY |
| Latitude: 42° 27' 54.08" |
| Longitude: 121° 57' 21.94" |
| T 36S, R 7.5E, S 11, SE 1/4, NE 1/4 |
| Distance/Bearing/Azimuth: From SE corner N 52° 37' 9" W, 125.9m, 307° 22' 51" |

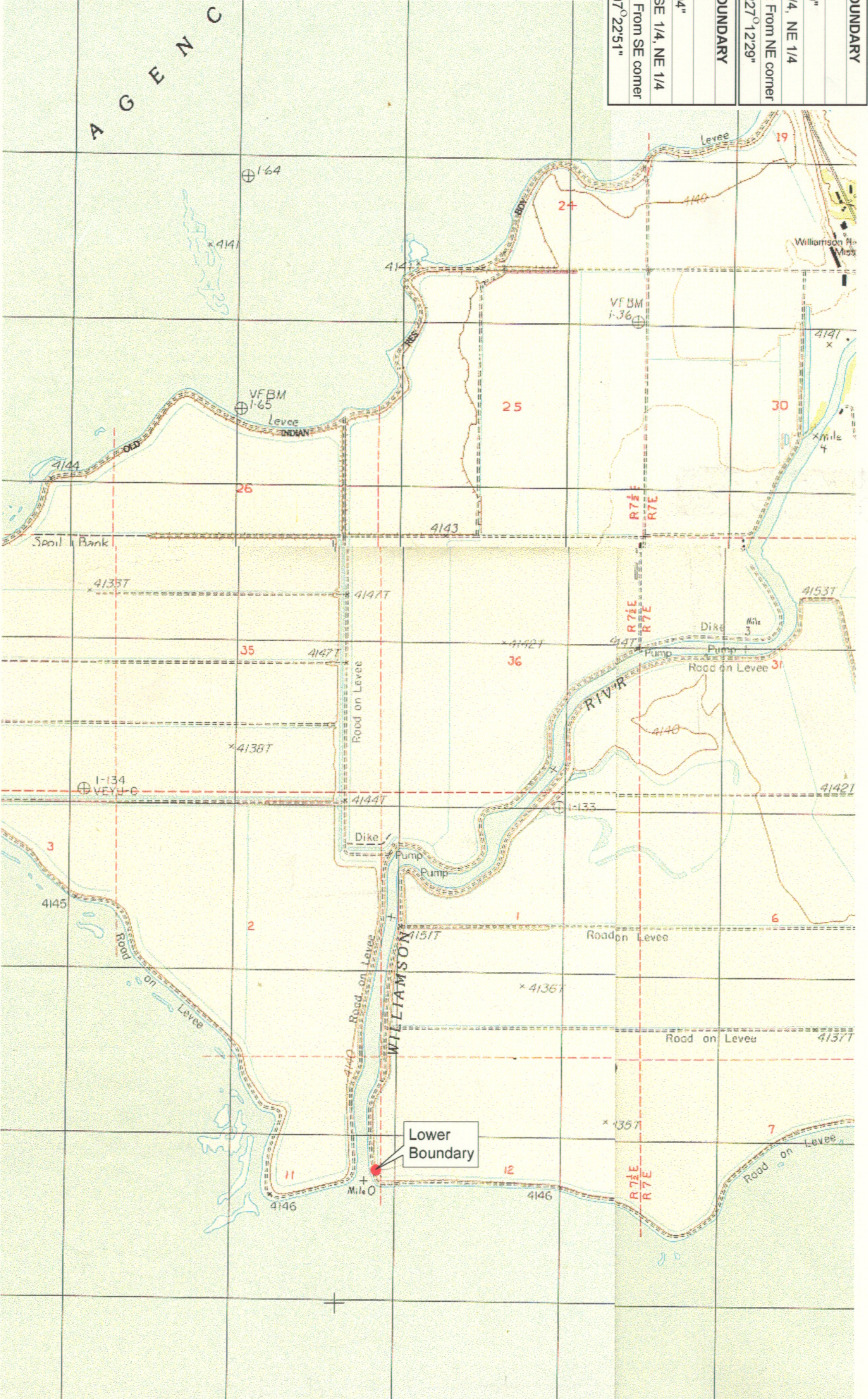
RECEIVER

MAR 01 1999

WATER RESOURCES DIVISION
SALEM, OREGON



Source: USGS 7.5 Minute
Quad: Agency Lake, Shoalwater Bay
Vertical Datum: National Geodetic Vertical Datum of 1929
Horizontal Datum: 1927 North American Datum



KLAMATH ADJUDICATION
CLAIM # **625** PAGE # **05**

Reach boundaries: Hwy 97 to Upper Klamath Lake.
Plate 2 of 2.

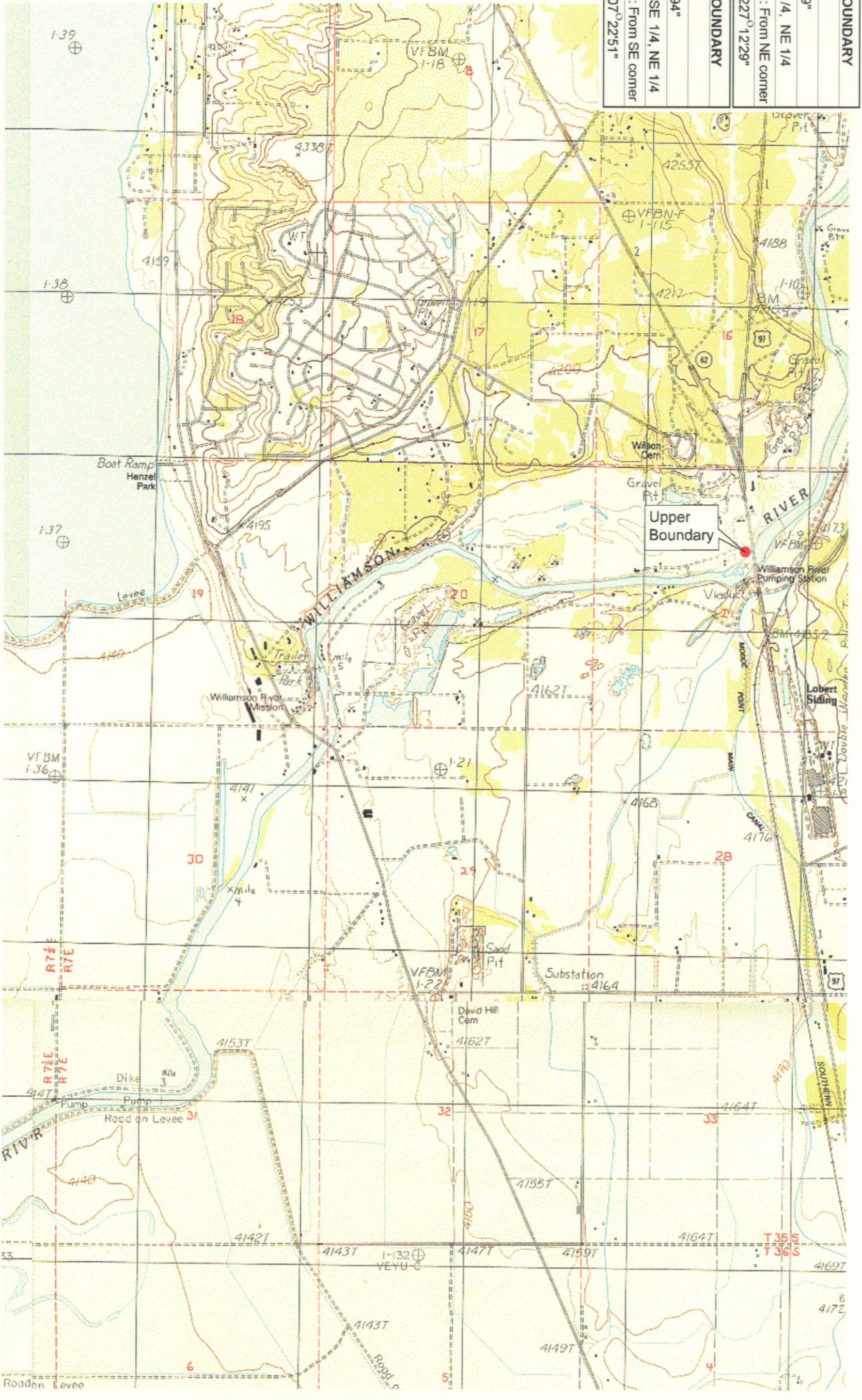
Klamath Basin Water Rights Claim Map
Department of the Interior Bureau of Indian Affairs
Reach Name: Williamson River #1
Scale: 1:24,000

| |
|--|
| UPPER REACH BOUNDARY |
| Latitude: 42° 31' 30.43" |
| Longitude: 121° 53' 3.59" |
| T 35S, R 7E, S 21, SW 1/4, NE 1/4 |
| Distance/Bearing/Azimuth: From NE corner S 47° 12' 29" W, 923.7m, 227° 12' 29" |
| LOWER REACH BOUNDARY |
| Latitude: 42° 27' 54.08" |
| Longitude: 121° 57' 21.94" |
| T 36S, R 7.5E, S 11, SE 1/4, NE 1/4 |
| Distance/Bearing/Azimuth: From SE corner N 52° 37' 9" W, 125.9m, 307° 22' 51" |

RECEIVED
 MAR 01 1999
 NATURAL RESOURCES DEPT.
 SALEM, OREGON



Source: USGS 7.5 Minute
 Quad: Agency Lake, Shoalwater
 Bay.
 Vertical Datum: National
 Geodetic Vertical Datum of
 1929.
 Horizontal Datum: 1927 North
 American Datum.



KLAMATH ADJUDICATION
 CLAIM # 625 PAGE # 06

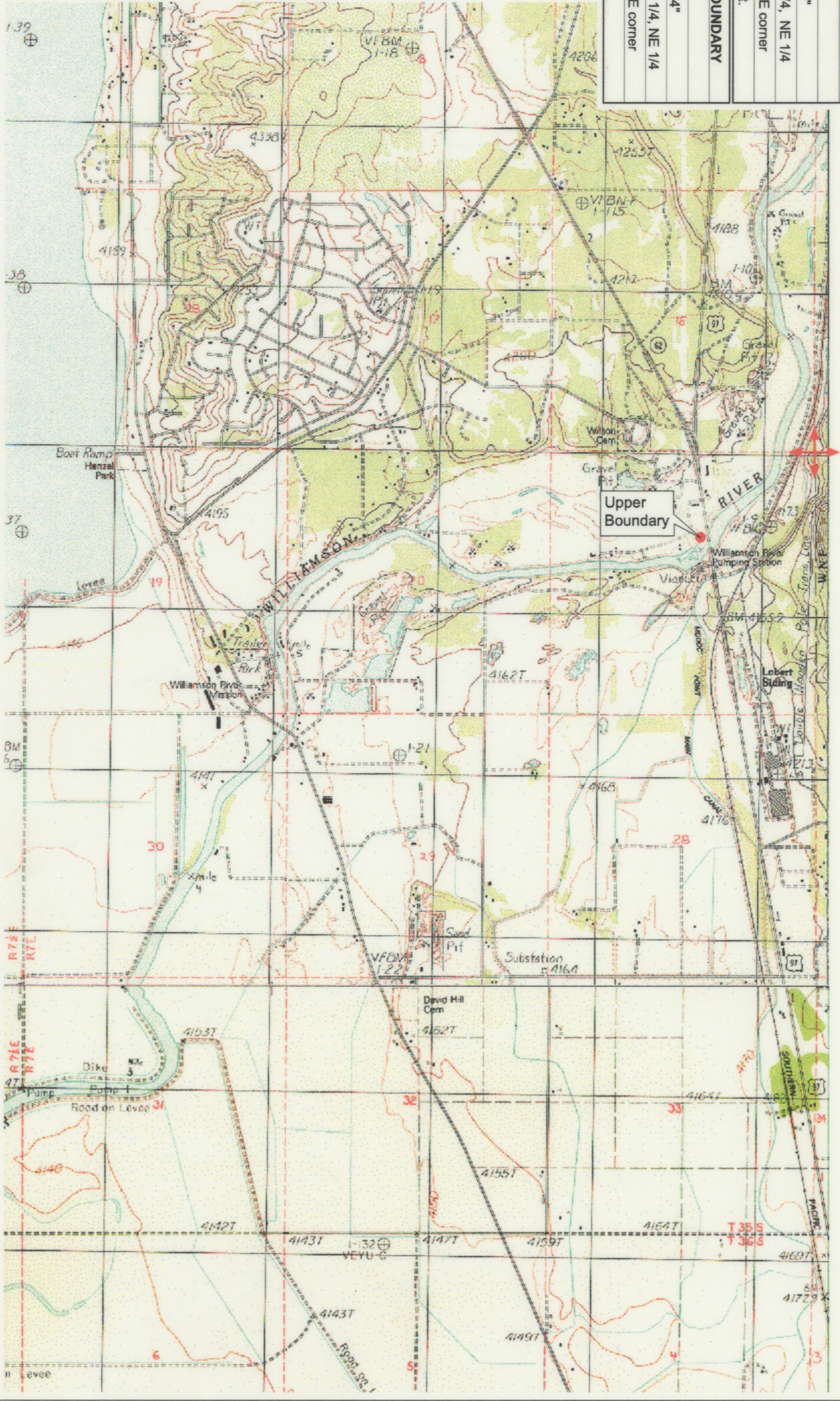
Reach boundaries: Hwy 97 to Upper Klamath Lake.
 Plate 1 of 2.

Klamath Basin Water Rights Claim Map
 Department of the Interior Bureau of Indian Affairs
 Reach Name: Williamson River #1
 Scale: 1:24,000

| |
|--|
| UPPER REACH BOUNDARY |
| Latitude: 42° 31' 30.43" |
| Longitude: 121° 53' 3.59" |
| T 36S, R 7E, S 21, SW 1/4, NE 1/4 |
| Bearing/Distance: From NE corner S 47° 12' 29" W, 3,030.7 Ft. |
| LOWER REACH BOUNDARY |
| Latitude: 42° 27' 54.08" |
| Longitude: 121° 57' 21.94" |
| T 36S, R 7SE, S 11, SE 1/4, NE 1/4 |
| Bearing/Distance: From SE corner N 37° 22' 51" W, 413.1 Ft. |



Source: USGS 7.5 Minute
 Quad: Agency Lake, Shoalwater
 Bay.
 Vertical Datum: National
 Geodetic Vertical Datum of
 1929.
 Horizontal Datum: 1927 North
 American Datum.



KLAMATH ADJUDICATION
 CLAIM # **625** PAGE # **031**

Reach boundaries: Hwy 97 to Upper Klamath Lake.
 Plate 1 of 2.

RECEIVED

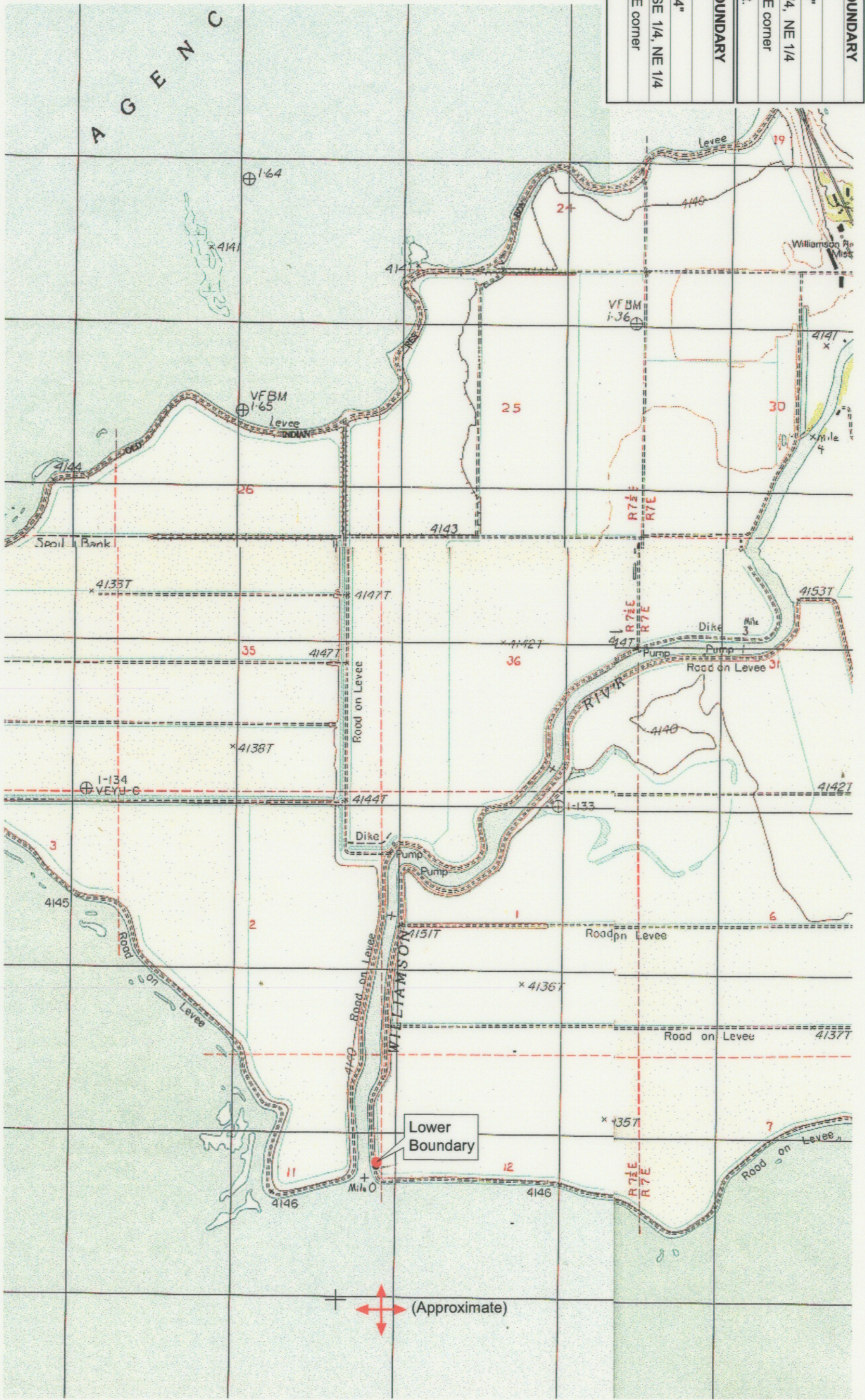
OCT 01 1999

WATER RESOURCES DEPT.
 SALEM, OREGON

Klamath Basin Water Rights Claim #625
 Department of the Interior Bureau of Indian Affairs
 Reach Name: **Williamson River #1 (WM 1)**
 Scale: 1:24,000
 (Amended)

\\slr\yvel\Graphics\Projects\GIS\BIA\60177_26\Topo\11179st1.mxd

| | |
|-------------------------------------|--|
| UPPER REACH BOUNDARY | |
| Latitude: | 42° 31' 30.43" |
| Longitude: | 121° 53' 3.59" |
| T 36S, R 7E, S 21, SW 1/4, NE 1/4 | |
| Bearing/Distance: | From NE corner S 47° 12' 29" W, 3,030.7 Ft. |
| LOWER REACH BOUNDARY | |
| Latitude: | 42° 27' 54.08" |
| Longitude: | 121° 57' 21.94" |
| T 36S, R 7.5E, S 11, SE 1/4, NE 1/4 | |
| Bearing/Distance: | From SE corner N 37° 22' 51" W, 413.1 Ft. |



Source: USGS 7.5 Minute Quad: Agency Lake, Shoshwater Bay.
 Vertical Datum: National Geodetic Vertical Datum of 1929.
 Horizontal Datum: 1927 North American Datum

KLAMATH ADJUDICATION
 CLAIM # **625** PAGE # **032**

Reach boundaries: Hwy 97 to Upper Klamath Lake.
 Plate 2 of 2.

RECEIVED

OCT 01 1999

WATER RESOURCES DEPT.
 SALEM, OREGON

Klamath Basin Water Rights Claim #625
 Department of the Interior Bureau of Indian Affairs
 Reach Name: Williamson River #1 (WM 1)
 Scale: 1:24,000
 (Amended)

\\slayette\Graphics\Projects\GIS\BIA\60177_26\Topo\1117\gsl1.mxd