

UPPER REACH BOUNDARY
Latitude: 42° 34' 19.50"
Longitude: 121° 52' 20.45"
T 35S, R 7E, S 3, NW 1/4, NW 1/4
Distance/Bearing/Azimuth: From NW corner S 28° 39' 26" E, 303.8m, 151° 20' 34"
LOWER REACH BOUNDARY
Latitude: 42° 31' 30.43"
Longitude: 121° 53' 3.59"
T 35S, R 7E, S 21, SW 1/4, NE 1/4
Distance/Bearing/Azimuth: From NE corner S 47° 12' 29" W, 923.7m, 227° 12' 29"

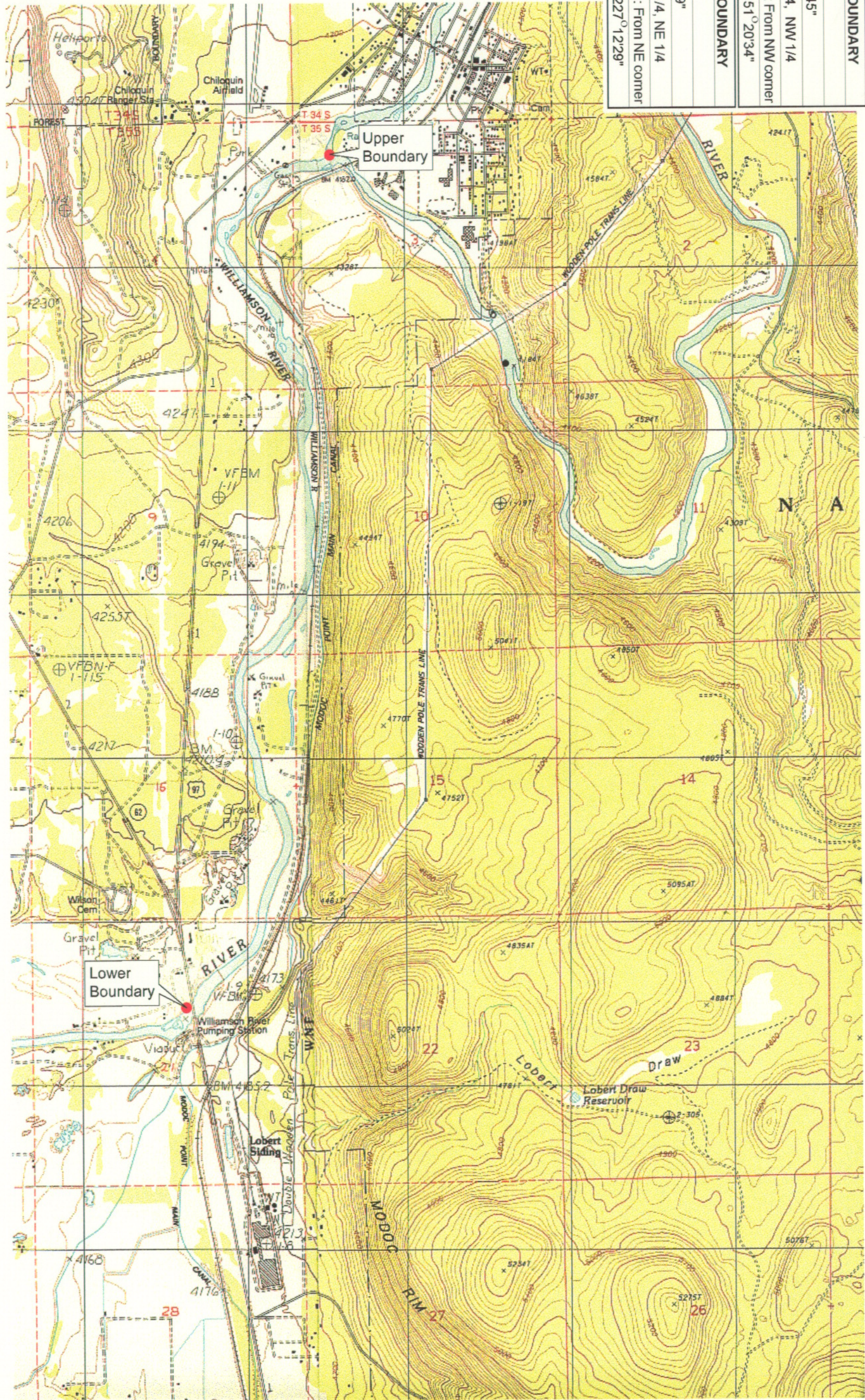
RECEIVED

MAR 01 1999

WATER RESOURCES CENTER
SALEM, OREGON



Source: USGS 7.5 Minute
Quad: Agency Lake,
Chiloquin.
Vertical Datum: National
Geodetic Vertical Datum of 1929
Horizontal Datum: 1927 North
American Datum.

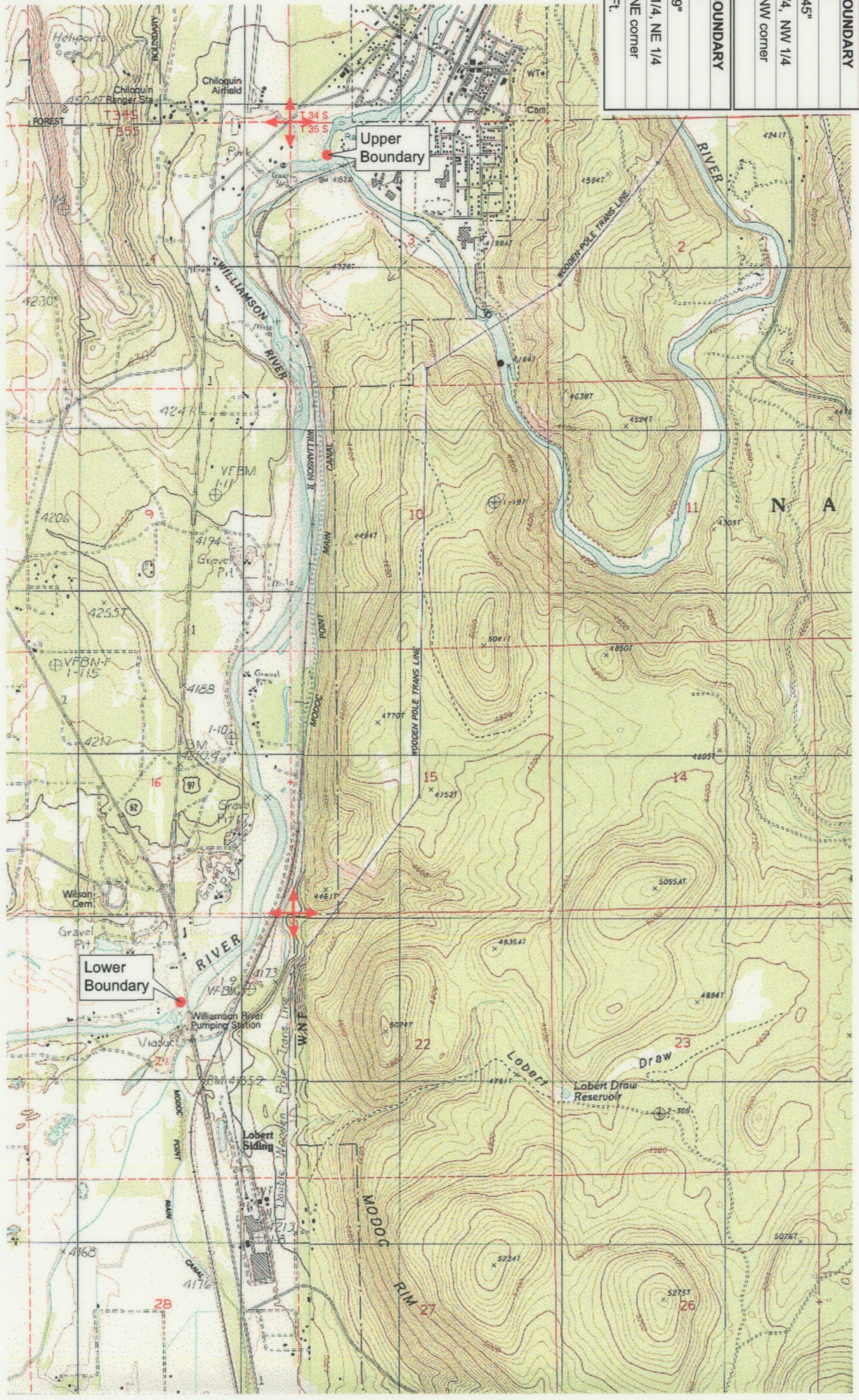


KLAMATH ADJUDICATION
CLAIM # 626 PAGE # 04

Reach boundaries: Sprague River to Hwy 97.
Plate 1 of 1.

Klamath Basin Water Rights Claim Map
Department of the Interior Bureau of Indian Affairs
Reach Name: Williamson River #2
Scale: 1:24,000

UPPER REACH BOUNDARY	
Latitude:	42° 34' 19.50"
Longitude:	121° 52' 20.45"
T 35S, R 7E, S 3, NW 1/4, NW 1/4	
Bearing/Distance:	From NW corner S 61° 20' 34" E, 996.8 Ft.
LOWER REACH BOUNDARY	
Latitude:	42° 31' 30.43"
Longitude:	121° 53' 3.59"
T 35S, R 7E, S 21, SW 1/4, NE 1/4	
Bearing/Distance:	From NE corner S 47° 0' 12.29" W, 3,030.7 Ft.



Source: USGS 7.5 Minute
 Quad: Agency Lake,
 Chiloquin.
 Vertical Datum: National
 Geodetic Vertical Datum of 1929.
 Horizontal Datum: 1927 North
 American Datum.

KLAMATH ADJUDICATION
626 CLAIM # PAGE #
015

Reach boundaries: Sprague River to Hwy 97.
 Plate 1 of 1.

RECEIVED

OCT 0 1 1999

WATER RESOURCES DEPT.
 SALEM, OREGON

Klamath Basin Water Rights Claim #626
 Department of the Interior Bureau of Indian Affairs
 Reach Name: **Williamson River #2 (WM 2)**
 Scale: 1:24,000
 (Amended)

\\lafayette\Graphics\Projects\GIS\BIA\60177_26\Topo\1117\g11.mxd