

UPPER REACH BOUNDARY

Latitude: 42° 38' 27.81"

Longitude: 121° 52' 33.43"

T 34S, R 7E, S 9, SE 1/4, NE 1/4

Distance/Bearing/Azimuth: From NW corner*

S 88° 46' E, 590.6m, 91° 55' 54"

LOWER REACH BOUNDARY

Latitude: 42° 34' 19.50"

Longitude: 121° 52' 20.45"

T 35S, R 7E, S 3, NW 1/4, NW 1/4

Distance/Bearing/Azimuth: From NW corner

S 28° 39' 26" E, 303.8m, 151° 20' 34"

* See plate 1 of 1 of Williamson River #4

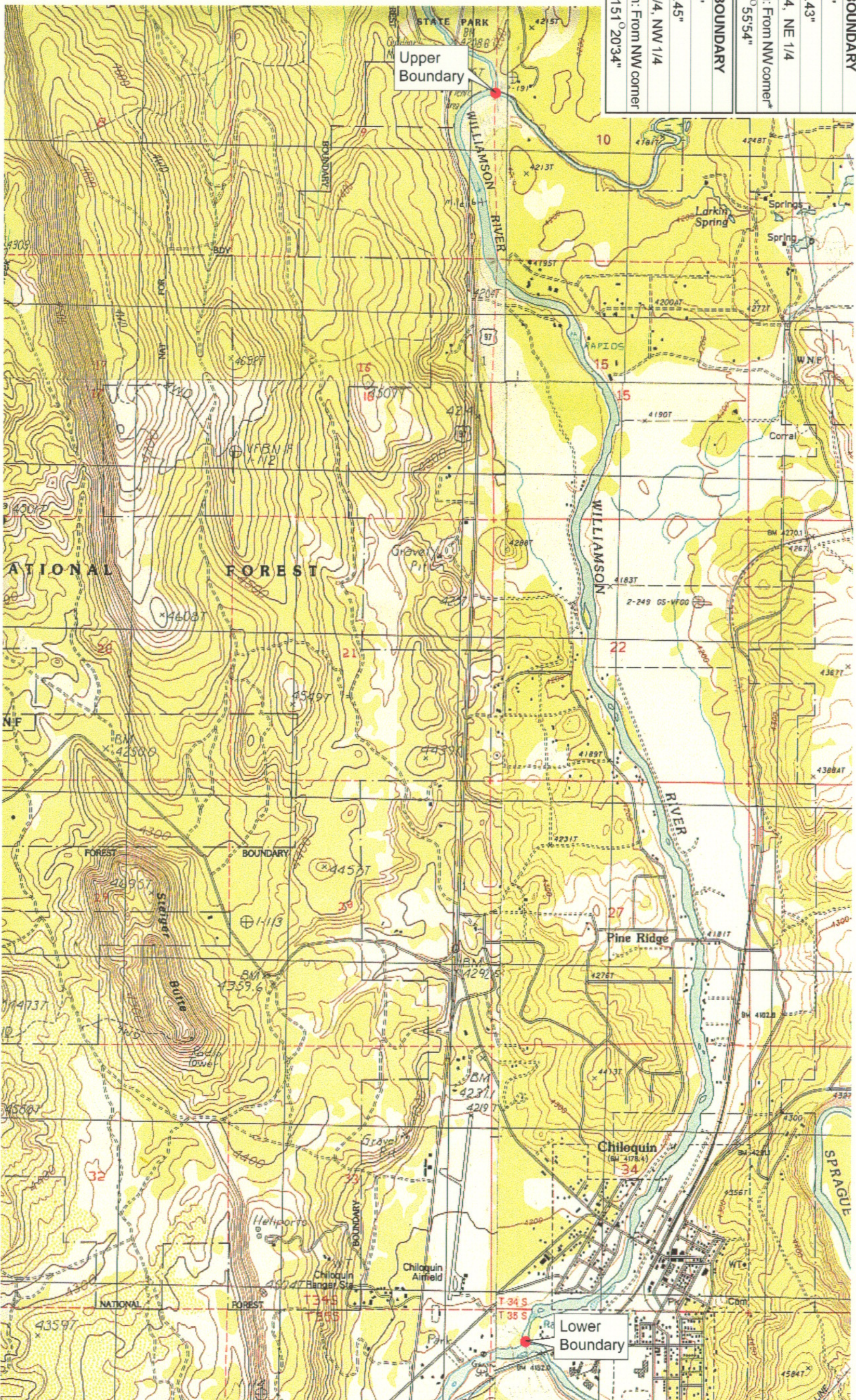
RECEIVED

MAR 01 1999

WATER RESOURCES DEPT.
SALEM, OREGON



Source: USGS 7.5 Minute
Quad: Ft. Klamath, Solumon
Butte, Chiloquin, Agency Lake.
Vertical Datum: National
Geodetic Vertical Datum of
1929.
Horizontal Datum: 1927 North
American Datum.



KLAMATH ADJUDICATION

04

CLAIM # 627 PAGE #

Reach boundaries: Spring Creek to Sprague River.
Plate 1 of 1.

Klamath Basin Water Rights Claim Map

Department of the Interior Bureau of Indian Affairs

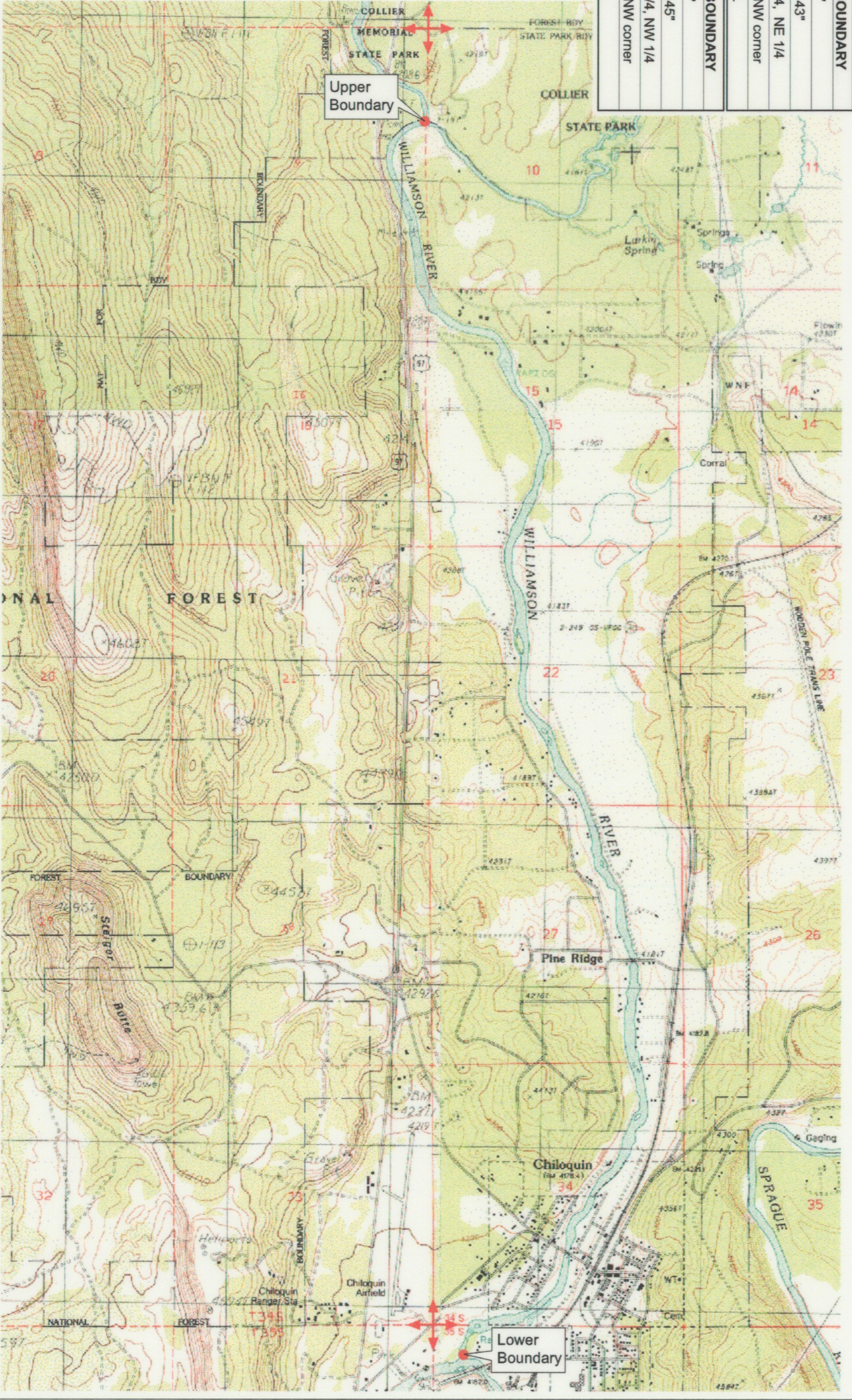
Reach Name: Williamson River #3

Scale: 1:24,000

UPPER REACH BOUNDARY
Latitude: 42° 38' 27.81"
Longitude: 121° 52' 33.43"
T 34S, R 7E, S 9, SE 1/4, NE 1/4
Bearing/Distance: From NW corner S 1° 55' 54" E, 1,937.7 Ft.
LOWER REACH BOUNDARY
Latitude: 42° 34' 19.50"
Longitude: 121° 52' 20.45"
T 35S, R 7E, S 3, NW 1/4, NW 1/4
Bearing/Distance: From NW corner S 61° 20' 14" E, 997.3 Ft.



Source: USGS 7.5 Minute
 Quad: Ft. Klamath, Solomon
 Butte, Chiloquin, Agency Lake.
 Vertical Datum: National
 Geodetic Vertical Datum of
 1929.
 Horizontal Datum: 1927 North
 American Datum.



KLAMATH ADJUDICATION
CLAIM # 627 PAGE # **014**

Reach boundaries: Spring Creek to Sprague River.
 Plate 1 of 1.

RECEIVED

OCT 01 1999
 WATER RESOURCES DEPT.
 SALEM, OREGON

Klamath Basin Water Rights Claim #627
 Department of the Interior Bureau of Indian Affairs
 Reach Name: Williamson River #3 (WM 3)
 Scale: 1:24,000
 (Amended)
 \\lafayette\Graphics\Projects\GIS\BIA\60177_26\Topo\1117\gis1_fm8