

UPPER REACH BOUNDARY
Latitude: 42° 40' 16.74"
Longitude: 121° 50' 7.09"
T 33S, R 7E, S 36, SW 1/4, NW 1/4
Distance/Bearing/Azimuth: From NW corner S 71° 25' 32" E, 482.8m, 108° 34' 28"
LOWER REACH BOUNDARY
Latitude: 42° 38' 27.81"
Longitude: 121° 52' 33.43"
T 34S, R 7E, S 10, SW 1/4, NW 1/4
Distance/Bearing/Azimuth: From NW corner S 88° 46" E, 590.6m, 91° 55' 54"

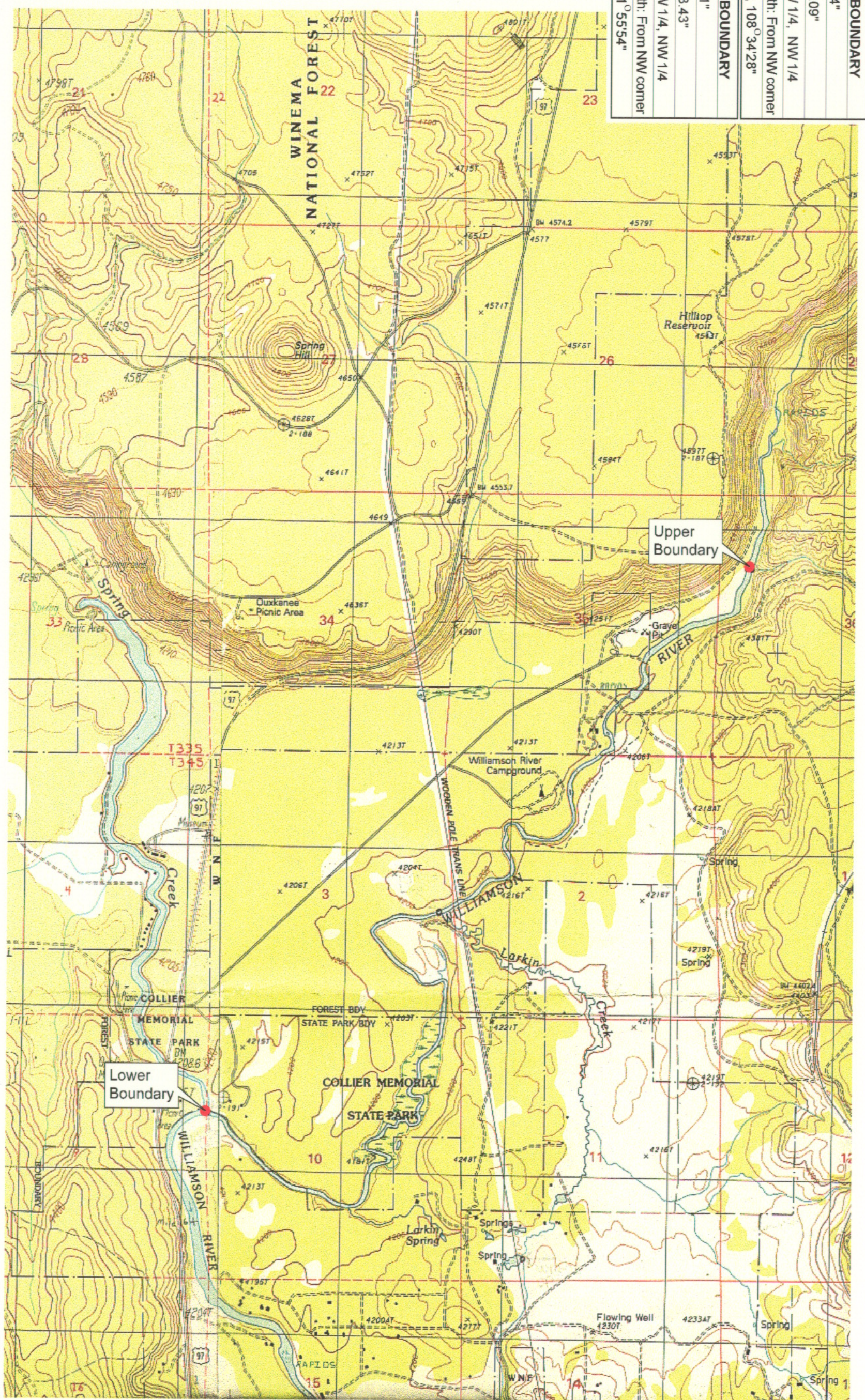
RECEIVED

MAR 01 1999

WATER RESOURCES DEPT.
SALEM, OREGON



Source: USGS 7.5 Minute
Quad: Solomon Butte, Ft.
Klamath.
Vertical Datum: National
Geodetic Vertical Datum of
1929.
Horizontal Datum: 1927 North
American Datum.



KLAMATH ADJUDICATION
CLAIM # 628 PAGE # 04

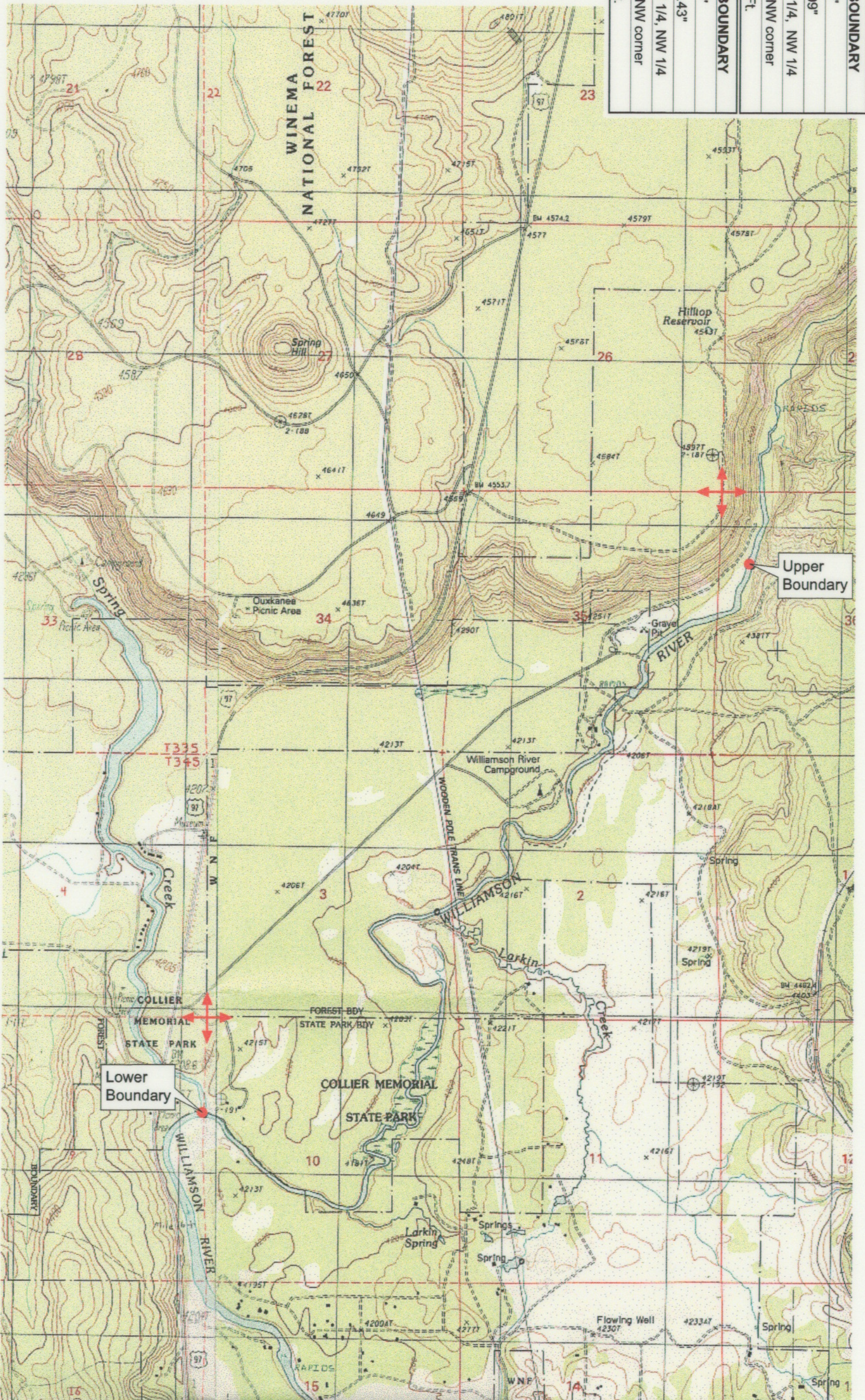
Reach boundaries: Lower end of Kirk Canyon to Spring Creek.
Plate 1 of 1.

Klamath Basin Water Rights Claim Map
Department of the Interior Bureau of Indian Affairs
Reach Name: Williamson River #4
Scale: 1:24,000

UPPER REACH BOUNDARY
Latitude: 42° 40' 16.74"
Longitude: 121° 50' 7.09"
T 33S, R 7E, S 36, SW 1/4, NW 1/4
Bearing/Distance: From NW corner S 18° 34' 28" E, 1,584.0 Ft.
LOWER REACH BOUNDARY
Latitude: 42° 38' 27.81"
Longitude: 121° 52' 33.43"
T 34S, R 7E, S 10, SW 1/4, NW 1/4
Bearing/Distance: From NW corner S 1° 55' 54" E, 1,937.7 Ft.



Source: USGS 7.5 Minute Quad: Solomon Butte, Fort Klamath.
Vertical Datum: National Geodetic Vertical Datum of 1929.
Horizontal Datum: 1927 North American Datum.



KLAMATH ADJUDICATION
 Page # **628** PAGE # **016**

Reach boundaries: Lower end of Kirk Canyon to Spring Creek.
 Plate 1 of 1.

RECEIVED

OCT 01 1999

WATER RESOURCES DEPT.
 SALEM, OREGON

Klamath Basin Water Rights Claim #628
 Department of the Interior Bureau of Indian Affairs
 Reach Name: Williamson River #4 (WM 4)
 Scale: 1:24,000
 (Amended)

\\slafay\etl\Graphics\Projects\GIS\BIA\60177_26\Topo\1117\gis1.fh8