

UPPER REACH BOUNDARY

Latitude: 42° 44' 52.23"
Longitude: 121° 49' 53.49"
T 33S, R 7E, S 1, NE 1/4, NW 1/4
Distance/Bearing/Azimuth: From NW corner*
S 5° 7' 35" E, 511.9m, 174° 52' 25"

LOWER REACH BOUNDARY

Latitude: 42° 40' 16.74"
Longitude: 121° 50' 7.09"
T 33S, R 7E, S 36, SW 1/4, NW 1/4
Distance/Bearing/Azimuth: From NW corner*
S 71° 25' 32" E, 482.8m, 108° 34' 28"

* See plate 1 of 1 of Williamson River #6

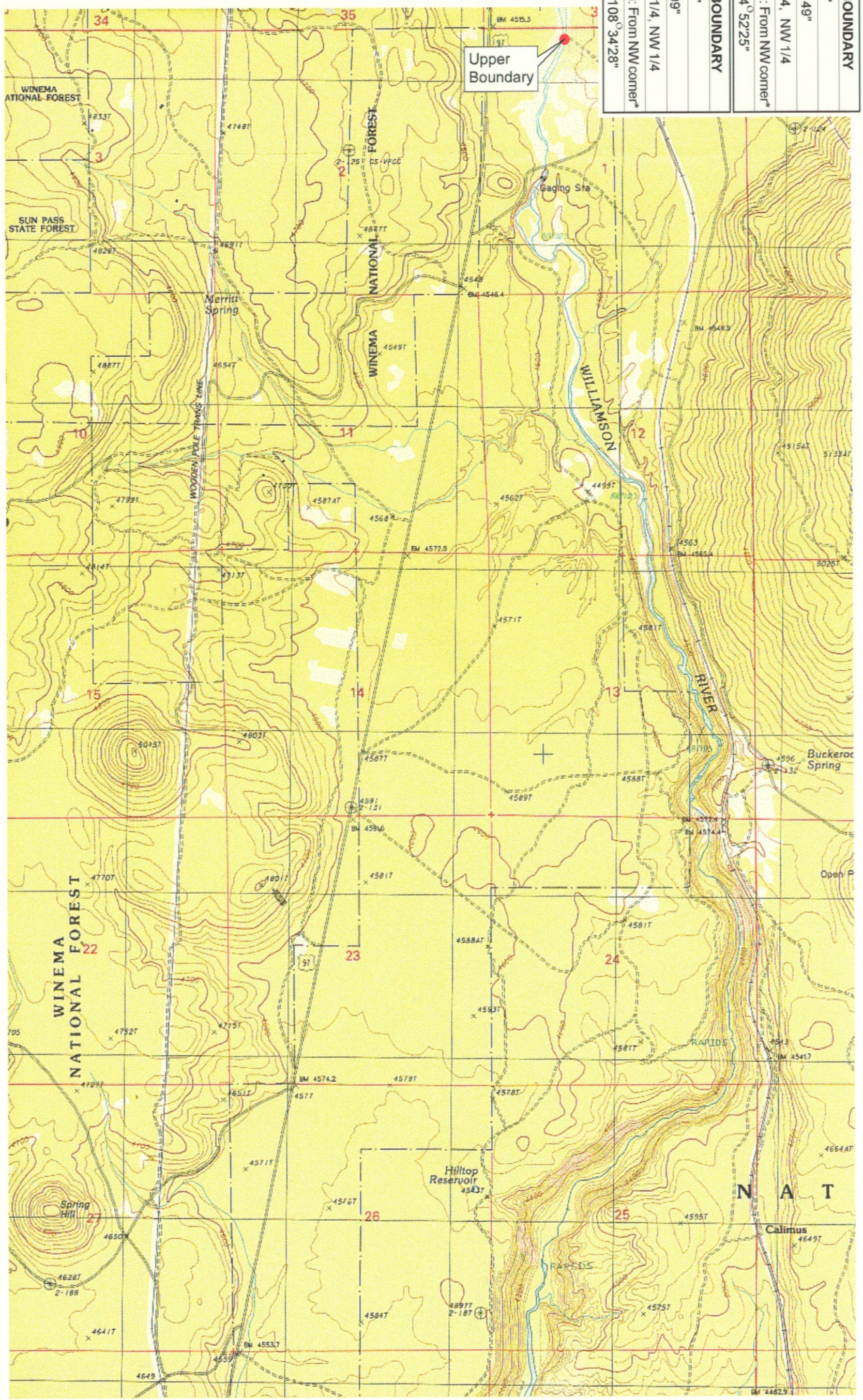
RECEIVER

MAR 01 1999

WATER RESOURCES DIVISION
SALEM, OREGON



Source: USGS 7.5 Minute Quad: Solomon Butte.
Vertical Datum: National Geodetic Vertical Datum of 1929.
Horizontal Datum: 1927 North American Datum.



KLAMATH ADJUDICATION

CLAIM 629 PAGE # 05

Reach boundaries: Kirk to Lower end of Kirk Canyon.
Plate 1 of 2.

Klamath Basin Water Rights Claim Map
Department of the Interior Bureau of Indian Affairs
Reach Name: Williamson River #5
Scale: 1:24,000

UPPER REACH BOUNDARY

Latitude: 42° 44' 52.23"
Longitude: 121° 49' 53.49"
T 33S, R 7E, S 1, NE 1/4, NW 1/4
Distance/Bearing/Azimuth: From NW corner*
S 5° 7' 35" E, 511.9m, 174° 52' 25"
LOWER REACH BOUNDARY
Latitude: 42° 40' 16.74"
Longitude: 121° 50' 7.09"
T 33S, R 7E, S 36, SW 1/4, NW 1/4
Distance/Bearing/Azimuth: From NW corner*
S 71° 25' 32" E, 482.8m, 108° 34' 28"

* See plate 1 of 1 of Williamson River #6

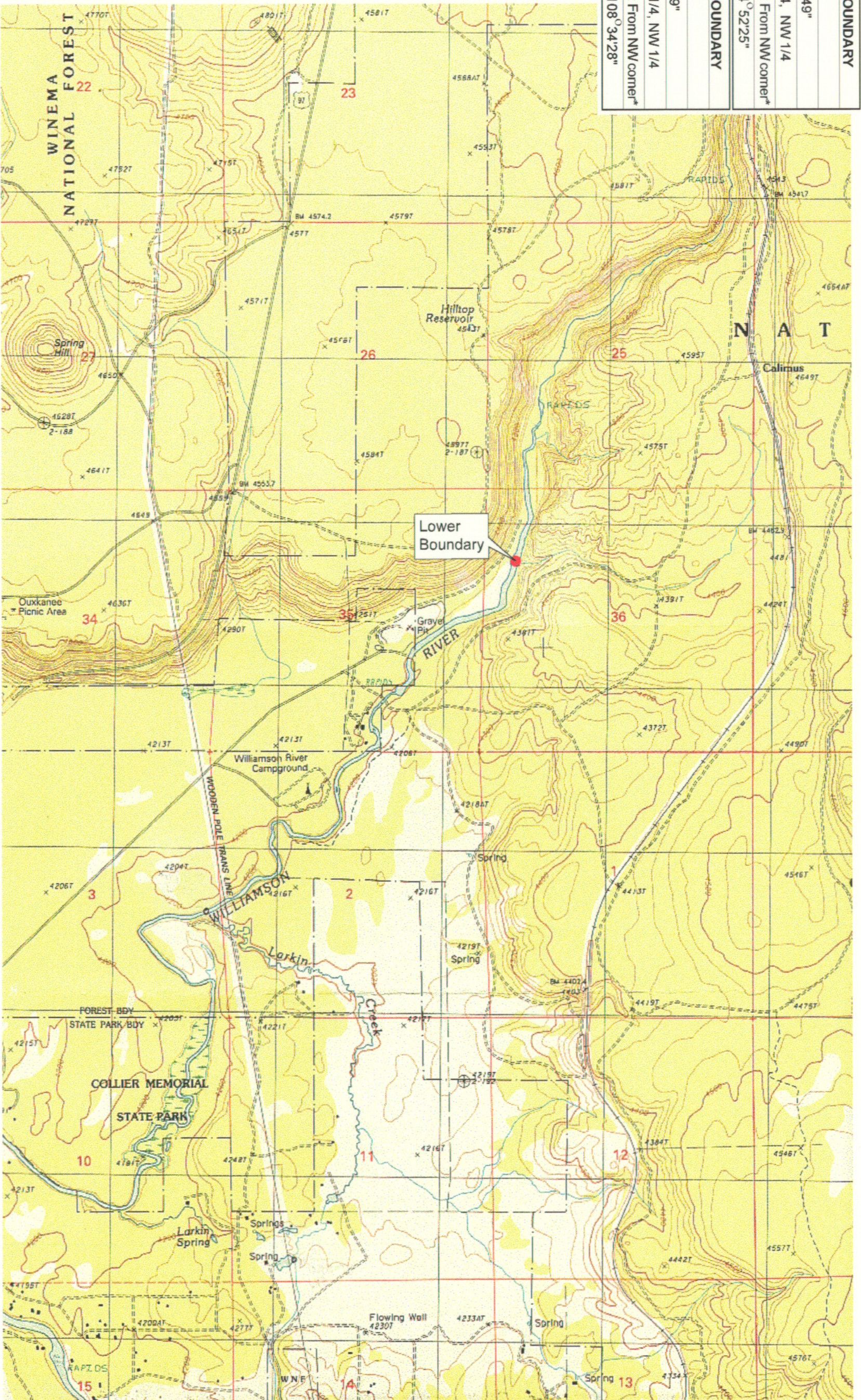
RECEIVED

MAR 01 1999

WATER RESOURCES DEPT
SALEM, OREGON



Source: USGS 7.5 Minute Quad: Solomon Butte.
Vertical Datum: National Geodetic Vertical Datum of 1929.
Horizontal Datum: 1927 North American Datum.



KLAMATH ADJUDICATION
CLAIM # 629 PAGE # **06**

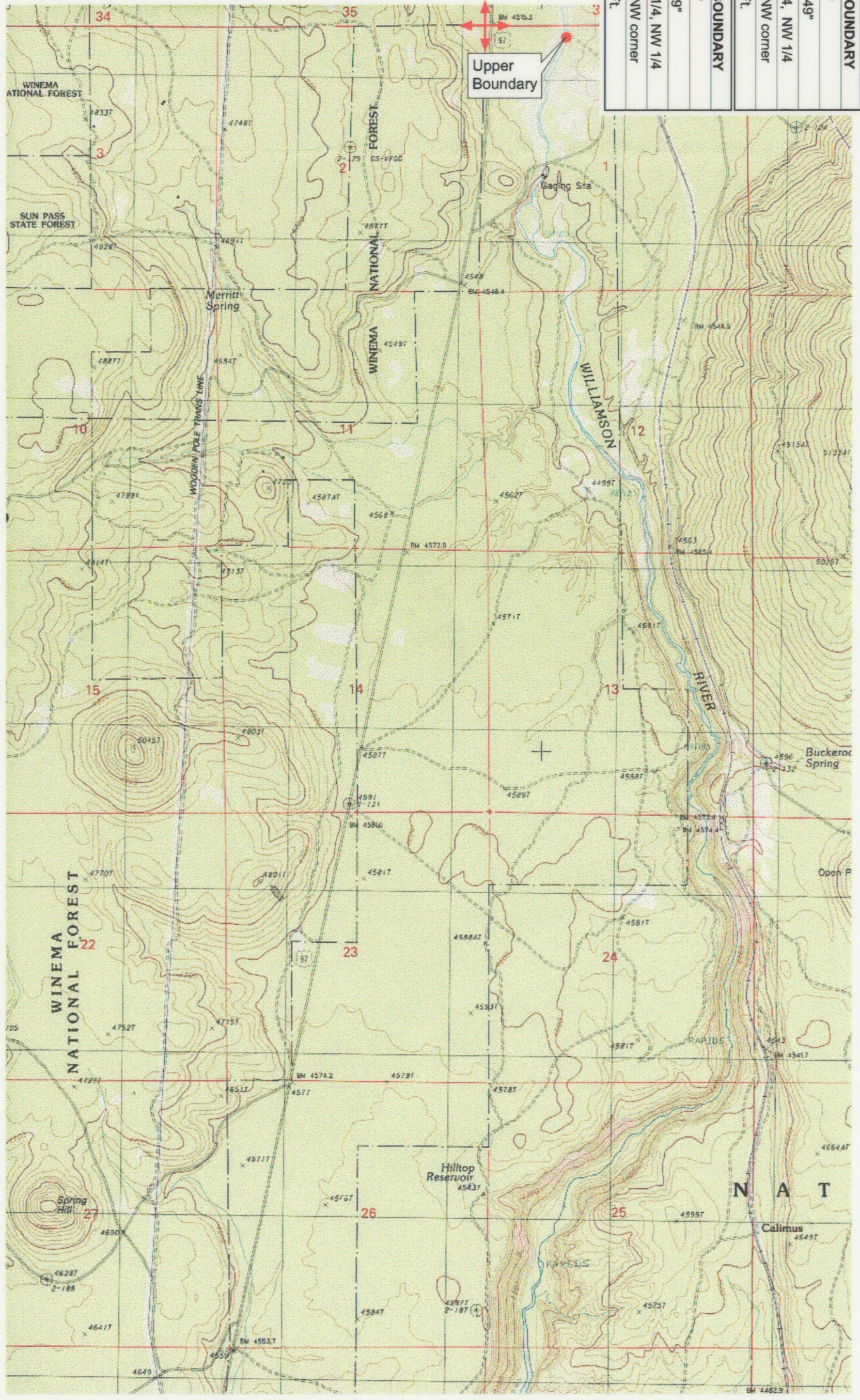
Reach boundaries: Kirk to Lower end of Kirk Canyon.
Plate 2 of 2.

Klamath Basin Water Rights Claim Map
Department of the Interior Bureau of Indian Affairs
Reach Name: **Williamson River #5**
Scale: 1:24,000

UPPER REACH BOUNDARY
Latitude: 42° 44' 52.23"
Longitude: 121° 49' 53.49"
T 33S, R 7E, S 1, NE 1/4, NW 1/4
Bearing/Distance: From NW corner S 84° 52' 25" E, 1,679.5 Ft.
LOWER REACH BOUNDARY
Latitude: 42° 40' 16.74"
Longitude: 121° 50' 7.09"
T 33S, R 7E, S 36, SW 1/4, NW 1/4
Bearing/Distance: From NW corner S 18° 34' 28" E, 1,584.0 Ft.



Source: USGS 7.5 Minute Quad: Solomon Butte.
Vertical Datum: National Geodetic Vertical Datum of 1929.
Horizontal Datum: 1927 North American Datum.



KLAMATH ADJUDICATION
CLAIM # **629** PAGE # **018**

Reach boundaries: Kirk to Lower end of Kirk Canyon.
Plate 1 of 2.

RECEIVED

OCT 01 1999

WATER RESOURCES DEPT.
SALEM, OREGON

Klamath Basin Water Rights Claim #629

Department of the Interior Bureau of Indian Affairs

Reach Name: Williamson River #5 (WM 5)

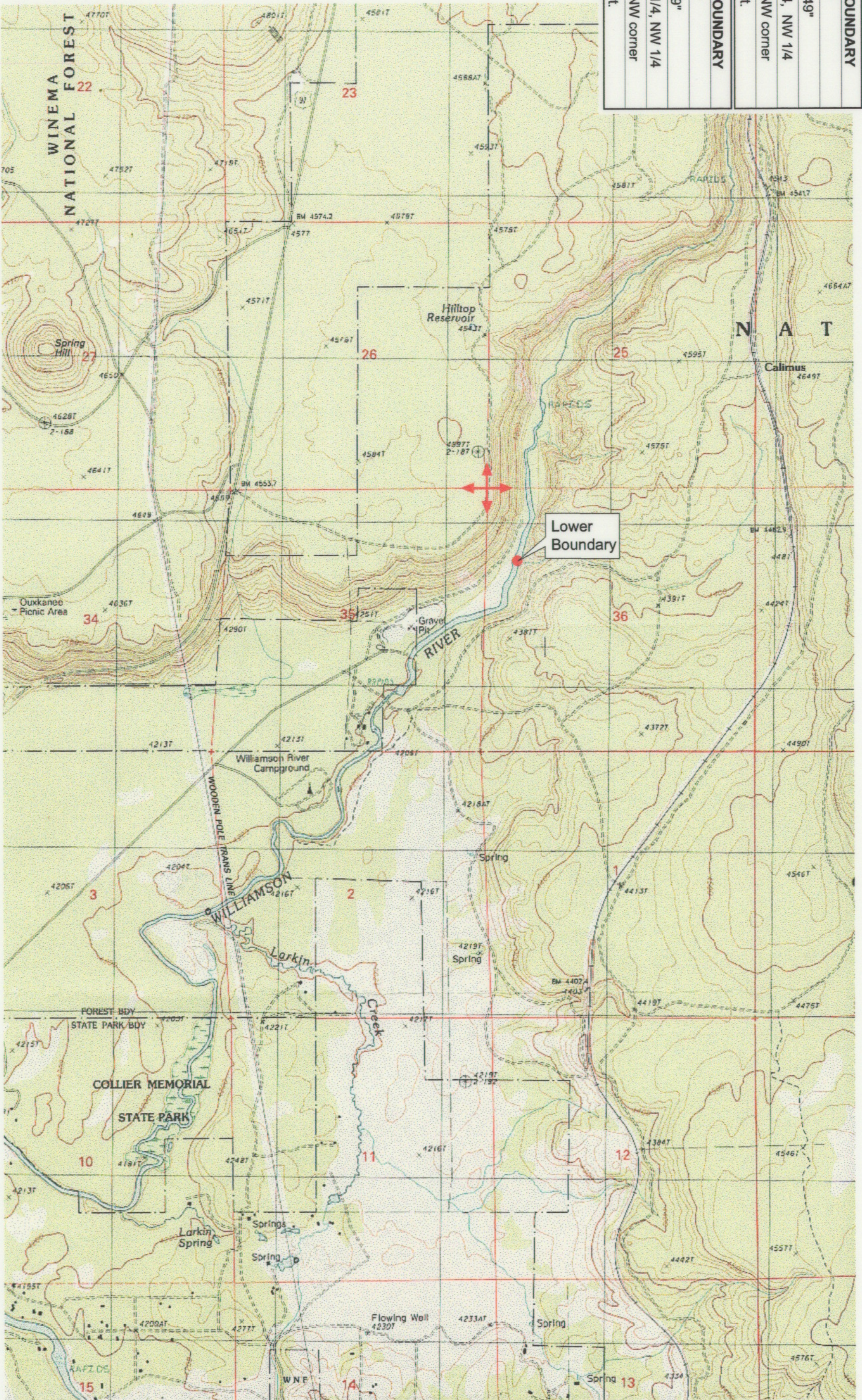
Scale: 1:24,000 (Amended)

\\lafayette\Graphics\Projects\GIS\BIA\60177_26\Topo\11179a1.mxd

UPPER REACH BOUNDARY
Latitude: 42° 44' 52.23"
Longitude: 121° 49' 53.49"
T 33S, R 7E, S 1, NE 1/4, NW 1/4
Bearing/Distance: From NW corner S 84° 52' 25" E, 1,679.5 Ft.
LOWER REACH BOUNDARY
Latitude: 42° 40' 16.74"
Longitude: 121° 50' 7.09"
T 33S, R 7E, S 36, SW 1/4, NW 1/4
Bearing/Distance: From NW corner S 18° 34' 28" E, 1,584.0 Ft.



Source: USGS 7.5 Minute Quad: Solomon Butte.
Vertical Datum: National Geodetic Vertical Datum of 1929.
Horizontal Datum: 1927 North American Datum.



KLAMATH ADJUDICATION
CLAIM # **629** PAGE # **019**

Reach boundaries: Kirk to Lower end of Kirk Canyon.
Plate 2 of 2.

RECEIVED

OCT 01 1999

WATER RESOURCES DEPT.
SALEM, OREGON

Klamath Basin Water Rights Claim #629

Department of the Interior Bureau of Indian Affairs
Reach Name: **Williamson River #5 (WM 5)**
Scale: 1:24,000
(Amended)

\\slr\yette\Graphics\Projects\GIS\BIA\60177_261\Topo\1179is1.fth8