

**UPPER REACH BOUNDARY**

Latitude: 42° 50' 42.76"
Longitude: 121° 27' 42.03"
T 31S, R 11E, S 31, NW 1/4, NW 1/4
Distance/Bearing/Azimuth: From NW corner S 68° 26' 54" E, 475.0m, 111° 33' 6"
<b>LOWER REACH BOUNDARY</b>
Latitude: 42° 58' 31.43"
Longitude: 121° 32' 35.82"
T 30S, R 10E, S 16, NW 1/4, NW 1/4
Distance/Bearing/Azimuth: From NW corner S 52° 50' 41" E, 473.6m, 127° 9' 19"

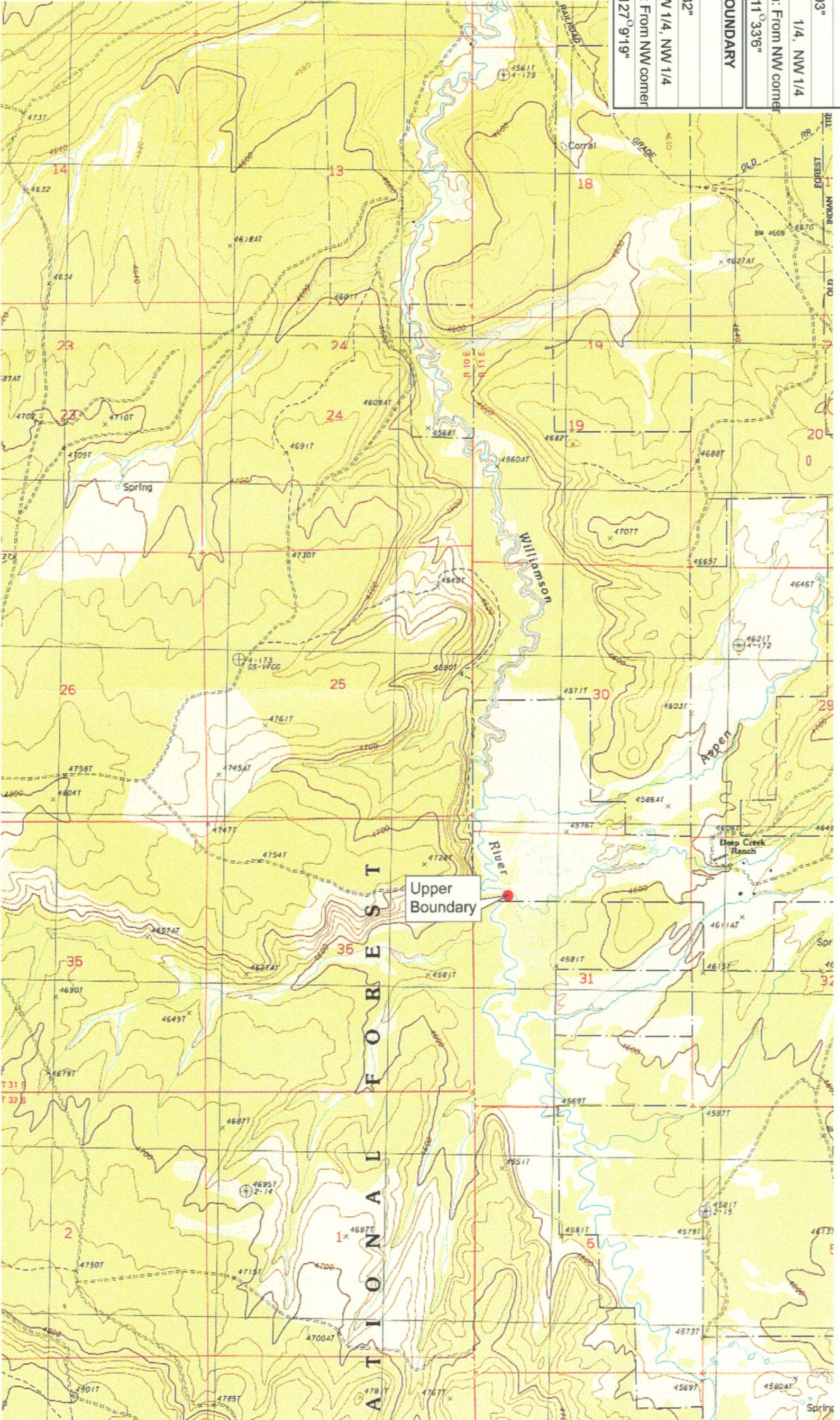
**RECEIVED**

MAR 01 1999

WATER RESOURCES DEPT.  
SALEM, OREGON



Source: USGS 7.5 Minute Quad:  
The Bull Pasture, Gordon Lake,  
Midhorse Ridge.  
Vertical Datum: National  
Geodetic Vertical Datum of 1929  
Horizontal Datum: 1927 North  
American Datum.



**KLAMATH ADJUDICATION**

**CLAIM 631**

PAGE #

**07**

Reach boundaries: Deep Creek to Klamath Marsh.  
Plate 1 of 4.

**Klamath Basin Water Rights Claim Map**

Department of the Interior Bureau of Indian Affairs

Reach Name: **Williamson River #7**

Scale: 1:24,000

<b>UPPER REACH BOUNDARY</b>	
Latitude: 42° 50' 42.76"	
Longitude: 121° 27' 42.03"	
T 31S, R 11E, S 31, NW 1/4, NW 1/4	
Distance/Bearing/Azimuth: From NW corner	
S 68° 26' 54" E, 475.0m, 111° 33' 6"	
<b>LOWER REACH BOUNDARY</b>	
Latitude: 42° 58' 31.43"	
Longitude: 121° 32' 35.82"	
T 30S, R 10E, S 16, NW 1/4, NW 1/4	
Distance/Bearing/Azimuth: From NW corner	
S 52° 50' 41" E, 473.6m, 127° 9' 19"	

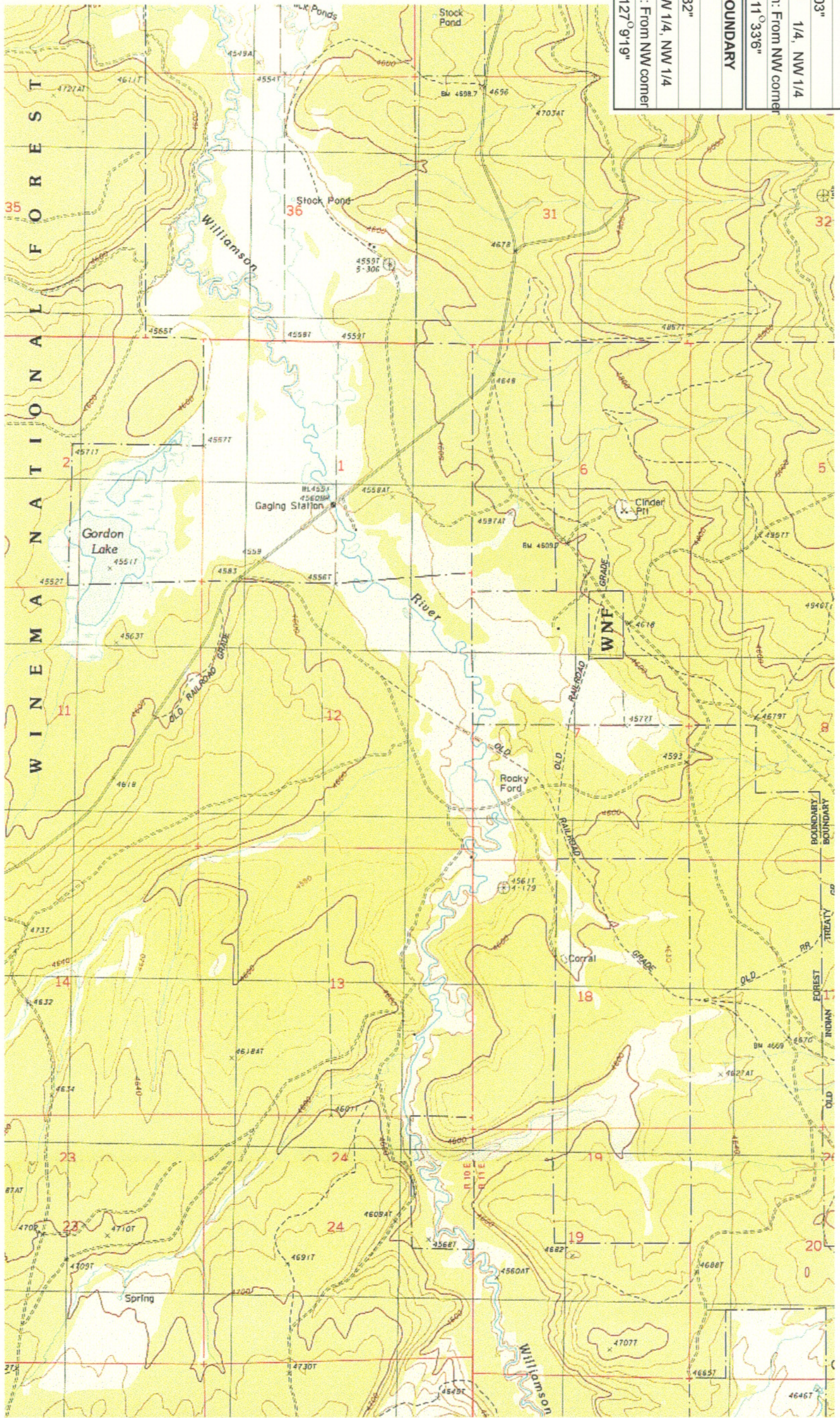
**RECEIVED**

MAR 01 1999

WATER RESOURCES DEPT  
SALEM, OREGON



Source: USGS 7.5 Minute  
Quad: The Bull Pasture,  
Gordon Lake, Wildhorse Ridge.  
Vertical Datum: National  
Geodetic Vertical Datum of  
1929.  
Horizontal Datum: 1927 North  
American Datum.



**KLAMATH ADJUDICATION**  
**CLAIM 31 PAGE # 08**

Reach boundaries: Deep Creek to Klamath Marsh.  
Plate 2 of 4.

**Klamath Basin Water Rights Claim Map**  
Department of the Interior Bureau of Indian Affairs  
Reach Name: **Williamson River #7**  
Scale: 1:24,000

<b>UPPER REACH BOUNDARY</b>	
Latitude:	42° 50' 42.76"
Longitude:	121° 27' 42.03"
T 31S, R 11E, S 31, NW 1/4, NW 1/4	
Distance/Bearing/Azimuth: From NW corner	S 68° 26' 54" E, 475.0m, 111° 33' 6"
<b>LOWER REACH BOUNDARY</b>	
Latitude:	42° 58' 31.43"
Longitude:	121° 32' 35.82"
T 30S, R 10E, S 16, NW 1/4, NW 1/4	
Distance/Bearing/Azimuth: From NW corner	S 52° 50' 41" E, 473.6m, 127° 9' 19"

**RECEIVED**

MAR 01 1999

WATER RESOURCES DEPT.  
SALEM, OREGON

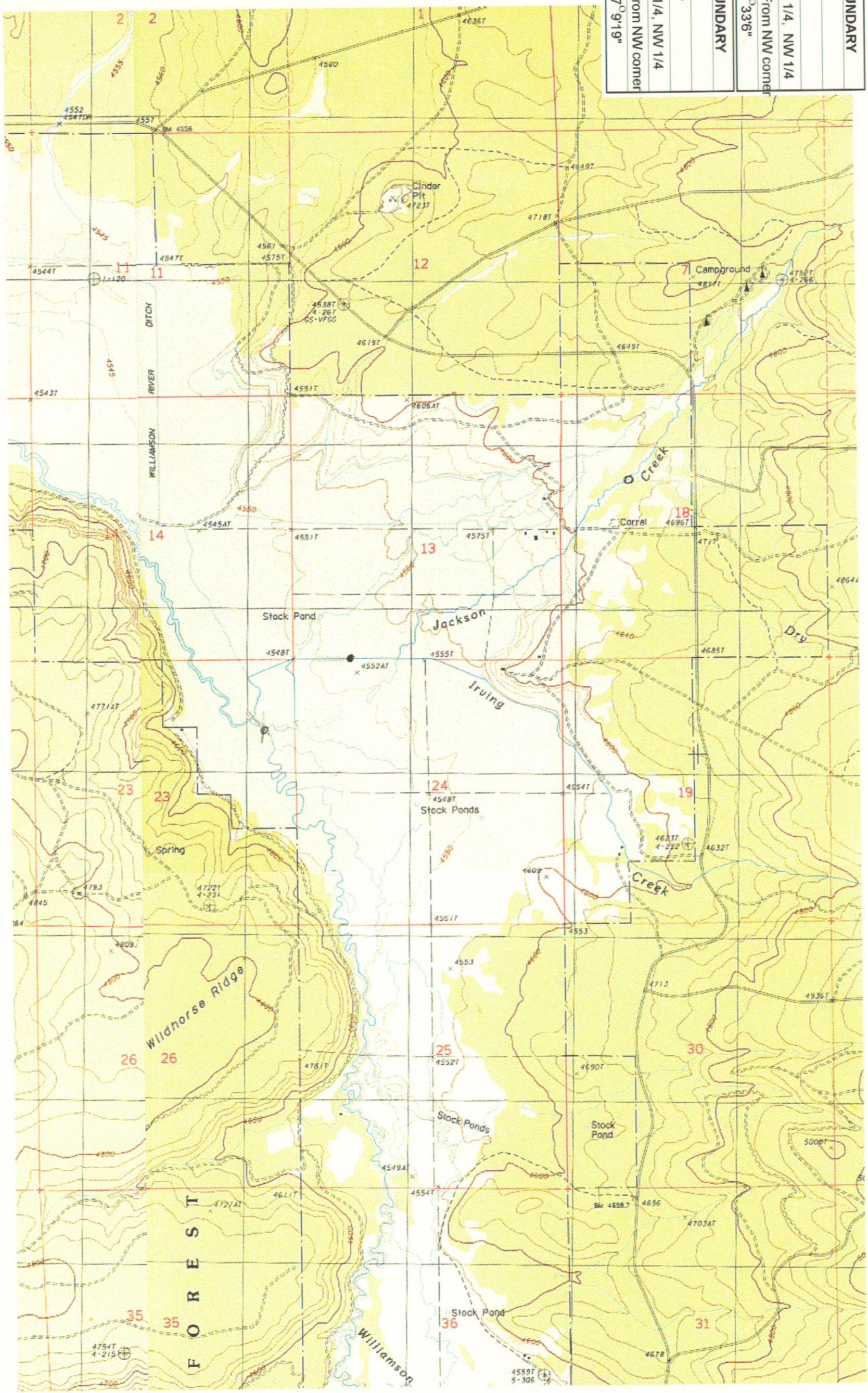
**RECEIVED**

MAR 01 1999

WATER RESOURCES DEPT.  
SALEM, OREGON



Source: USGS 7.5 Minute Quad:  
The Bull Pasture, Gordon Lake,  
Wildhorse Ridge.  
Vertical Datum: National Geodetic  
Vertical Datum of 1929.  
Horizontal Datum: 1927 North  
American Datum.



**KLAMATH ADJUDICATION**  
**CLAIM 631** PAGE # **09**

Reach boundaries: Deep Creek to Klamath Marsh.  
Plate 3 of 4.

**Klamath Basin Water Rights Claim Map**  
Department of the Interior Bureau of Indian Affairs  
Reach Name: **Williamson River #7**  
Scale: 1:24,000

**UPPER REACH BOUNDARY**

Latitude: 42° 50' 42.76"

Longitude: 121° 27' 42.03"

T 31S, R 11E, S 31, NW 1/4, NW 1/4

Distance/Bearing/Azimuth: From NW corner

S 68° 26' 54" E, 475.0m, 111° 33' 6"

**LOWER REACH BOUNDARY**

Latitude: 42° 58' 31.43"

Longitude: 121° 32' 35.82"

T 30S, R 10E, S 16, NW 1/4, NW 1/4

Distance/Bearing/Azimuth: From NW corner

S 52° 50' 41" E, 473.6m, 127° 9' 19"

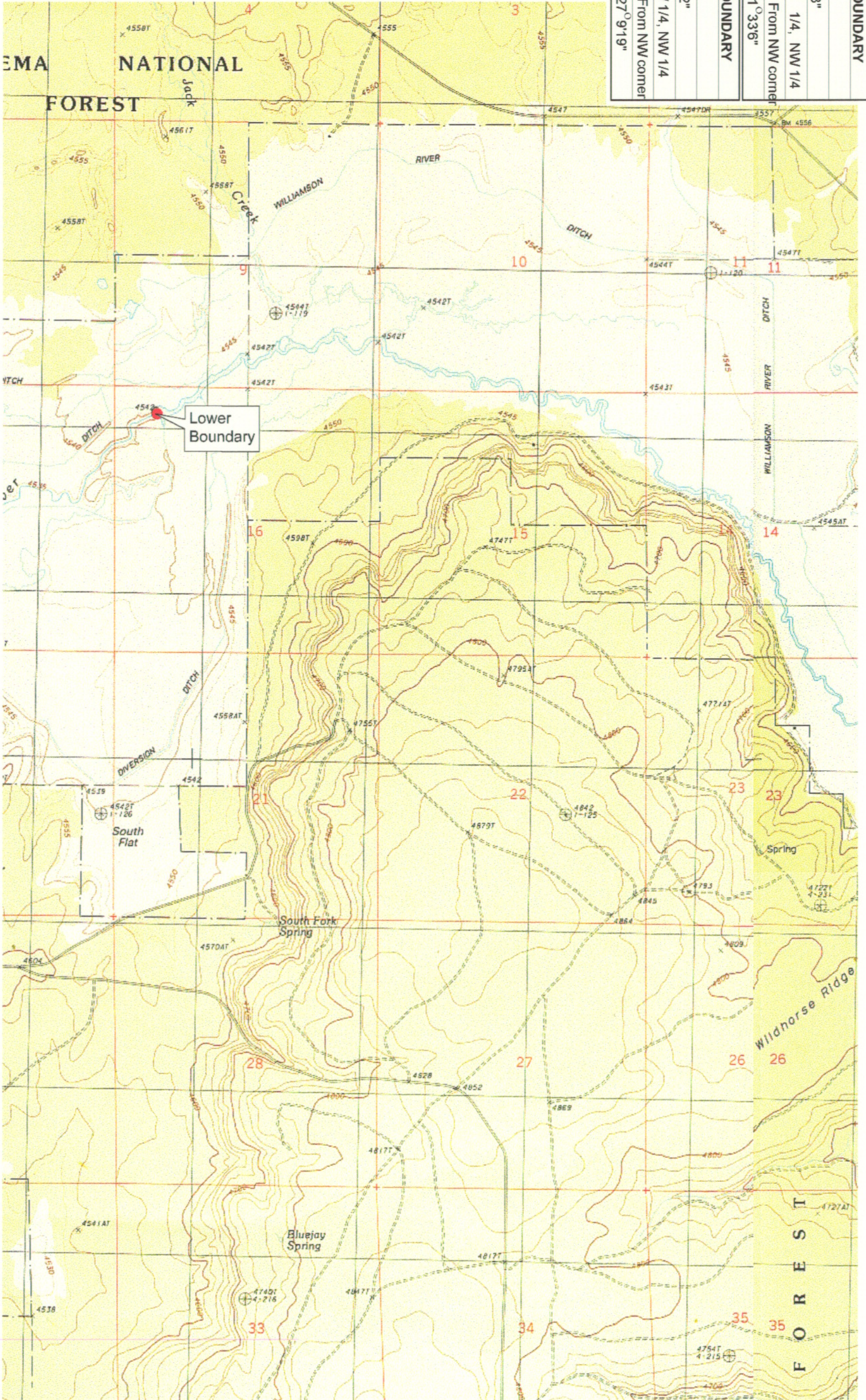
**RECEIVED**

MAR 01 1999

WATER RESOURCES DEPT.  
SALEM, OREGON



Source: USGS 7.5 Minute Quad:  
The Bull Pasture, Gordon Lake,  
Wildhorse Ridge.  
Vertical Datum: National Geodetic  
Horizontal Datum: 1929  
Horizontal Datum: 1927 North  
American Datum.



**KLAMATH ADJUDICATION**  
CLAIM # **631** PAGE # **10**

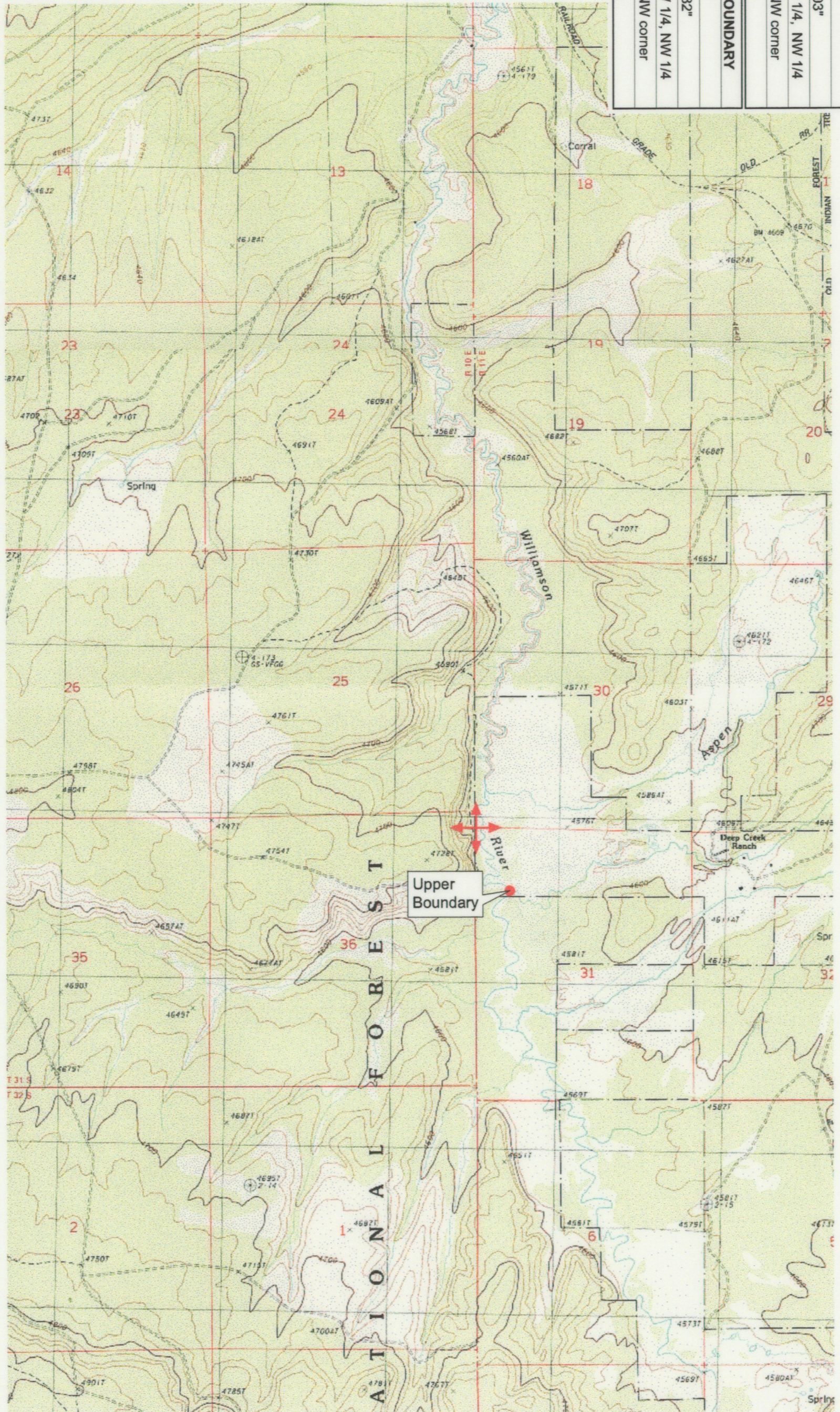
Reach boundaries: Deep Creek to Klamath Marsh.  
Plate 4 of 4.


**Klamath Basin Water Rights Claim Map**  
Department of the Interior Bureau of Indian Affairs  
Reach Name: **Williamson River #7**  
Scale: 1:24,000

<b>UPPER REACH BOUNDARY</b>
Latitude: 42° 50' 42.76"
Longitude: 121° 27' 42.03"
T 31S, R 11E, S 31, NW 1/4, NW 1/4
Bearing/Distance: From NW corner S 21° 33' 6" E, 1,558.4 Ft.
<b>LOWER REACH BOUNDARY</b>
Latitude: 42° 58' 31.43"
Longitude: 121° 32' 35.82"
T 30S, R 10E, S 16, NW 1/4, NW 1/4
Bearing/Distance: From NW corner S 37° 9' 19" E, 1,554.0 Ft.



Source: USGS 7.5 Minute Quad:  
The Bull Pasture, Gordon Lake,  
Wildhorse Ridge.  
Vertical Datum: National  
Geodetic Vertical Datum of 1929.  
Horizontal Datum: 1927 North  
American Datum.



**KLAMATH ADJUDICATION**  
 **631** **PAGE # 021**

Reach boundaries: Deep Creek to Klamath Marsh.  
 Plate 1 of 4.

**RECEIVED**

OCT 01 1999

WATER RESOURCES DEPT.  
 SALEM, OREGON

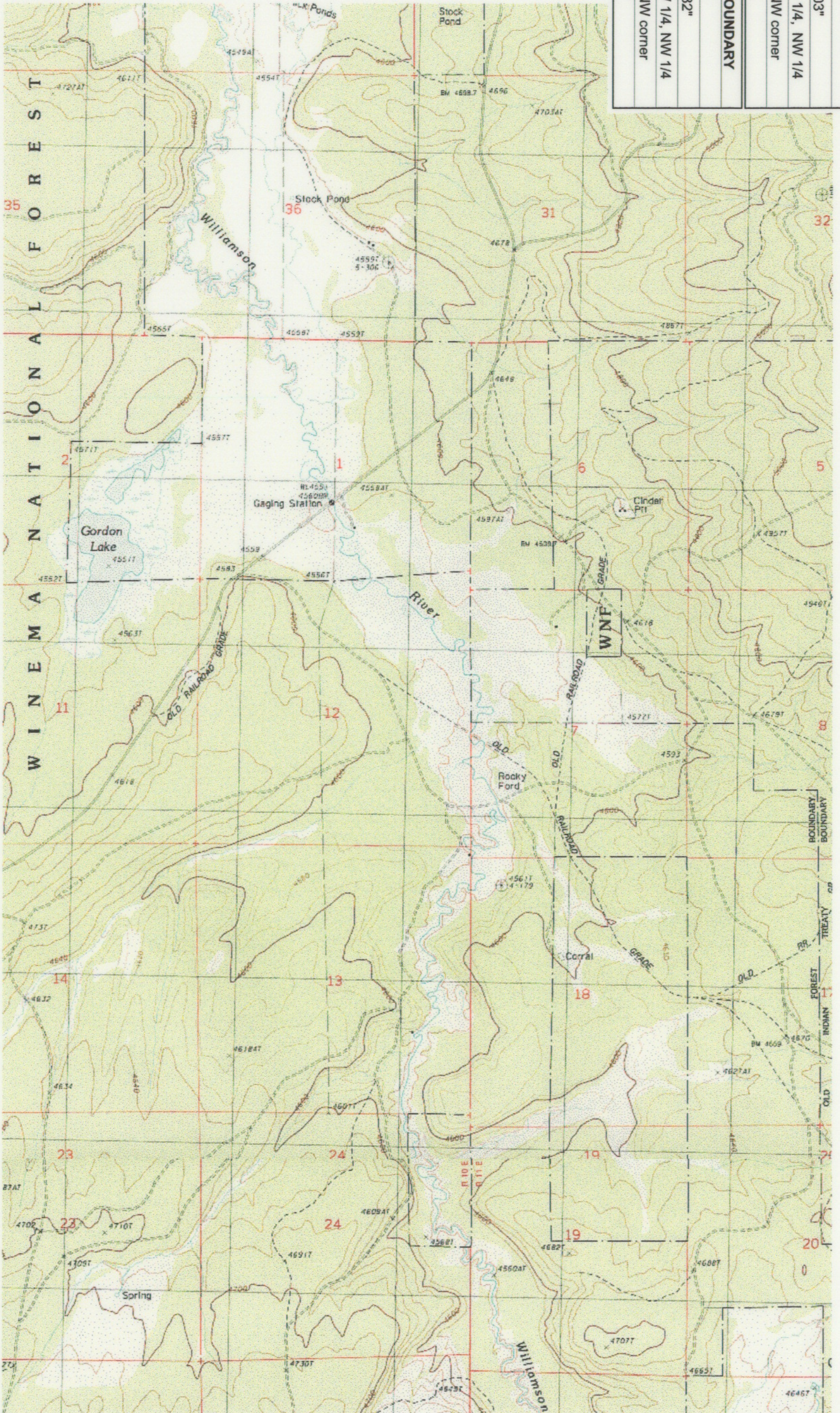
Klamath Basin Water Rights Claim #631  
 Department of the Interior Bureau of Indian Affairs  
 Reach Name: **Williamson River #7 (WM 7)**  
 Scale: 1:24,000  
 (Amended)

\\lafayette\geographics\Projects\GIS\BIA\60177\_26\Topo\1117.gis:1.fh8

<b>UPPER REACH BOUNDARY</b>	
Latitude: 42° 50' 42.76"	
Longitude: 121° 27' 42.03"	
T 31S, R 11E, S 31, NW 1/4, NW 1/4	
Bearing/Distance: From NW corner	
S 21° 33' 6" E, 1,558.4 Ft.	
<b>LOWER REACH BOUNDARY</b>	
Latitude: 42° 58' 31.43"	
Longitude: 121° 32' 35.82"	
T 30S, R 10E, S 16, NW 1/4, NW 1/4	
Bearing/Distance: From NW corner	
S 37° 9' 19" E, 1,554.0 Ft.	



Source: USGS 7.5 Minute  
 Quad: The Bull Pasture,  
 Gordon Lake, Wildhorse Ridge.  
 Vertical Datum: National  
 Geodetic Vertical Datum of  
 1929.  
 Horizontal Datum: 1927 North  
 American Datum.



**KLAMATH ADJUDICATION**  
 CLAIM # **631** PAGE # **022**

Reach boundaries: Deep Creek to Klamath Marsh.  
 Plate 2 of 4.

**RECEIVED**

OCT 01 1999  
 WALTH RESOURCES DEPT.  
 SALEM, OREGON

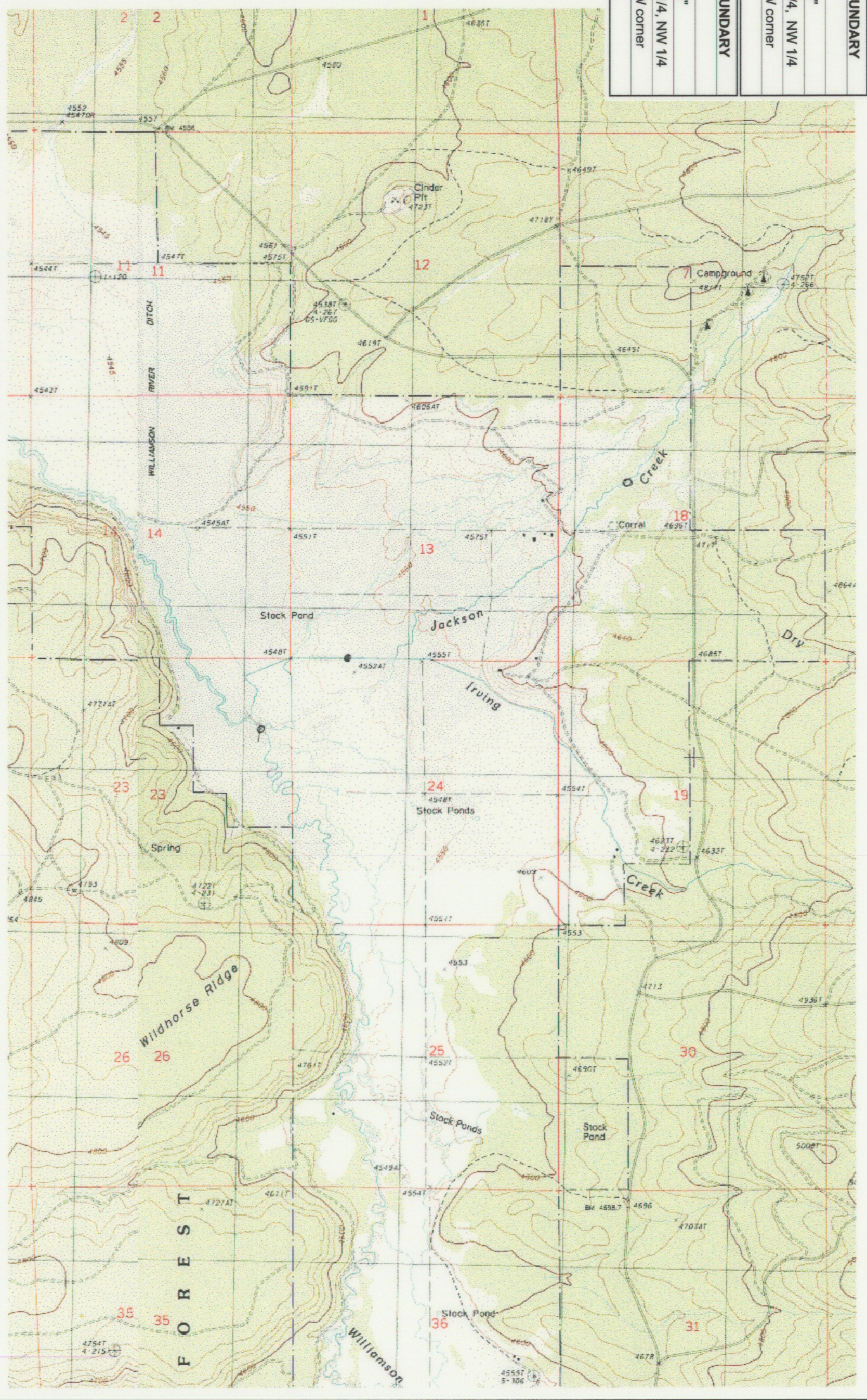
Klamath Basin Water Rights Claim #631  
 Department of the Interior Bureau of Indian Affairs  
 Reach Name: **Williamson River #7 (WM 7)**  
 Scale: 1:24,000  
 (Amended)

\\lafayette\Graphics\Projects\GIS\BIA60177\_26\Topo\1179s1.mxd

<b>UPPER REACH BOUNDARY</b>	
Latitude:	42° 50' 42.76"
Longitude:	121° 27' 42.03"
T 31S, R 11E, S 31, NW 1/4, NW 1/4	
Bearing/Distance:	From NW corner
S 21° 33' 6" E, 1,558.4 Ft.	
<b>LOWER REACH BOUNDARY</b>	
Latitude:	42° 58' 31.43"
Longitude:	121° 32' 35.82"
T 30S, R 10E, S 16, NW 1/4, NW 1/4	
Bearing/Distance:	From NW corner
S 37° 9' 19" E, 1,554.0 Ft.	



Source: USGS 7.5 Minute Quad:  
The Bull Pasture, Gordon Lake,  
Wildhorse Ridge.  
Vertical Datum: National Geodetic  
Horizontal Datum of 1929.  
Horizontal Datum: 1927 North  
American Datum.



**KLAMATH ADJUDICATION**  
CLAIM # **631** PAGE # **023**

Reach boundaries: Deep Creek to Klamath Marsh.  
Plate 3 of 4.

**RECEIVED**

OCT 01 1999

WATER RESOURCES DEPT.  
SALEM, OREGON

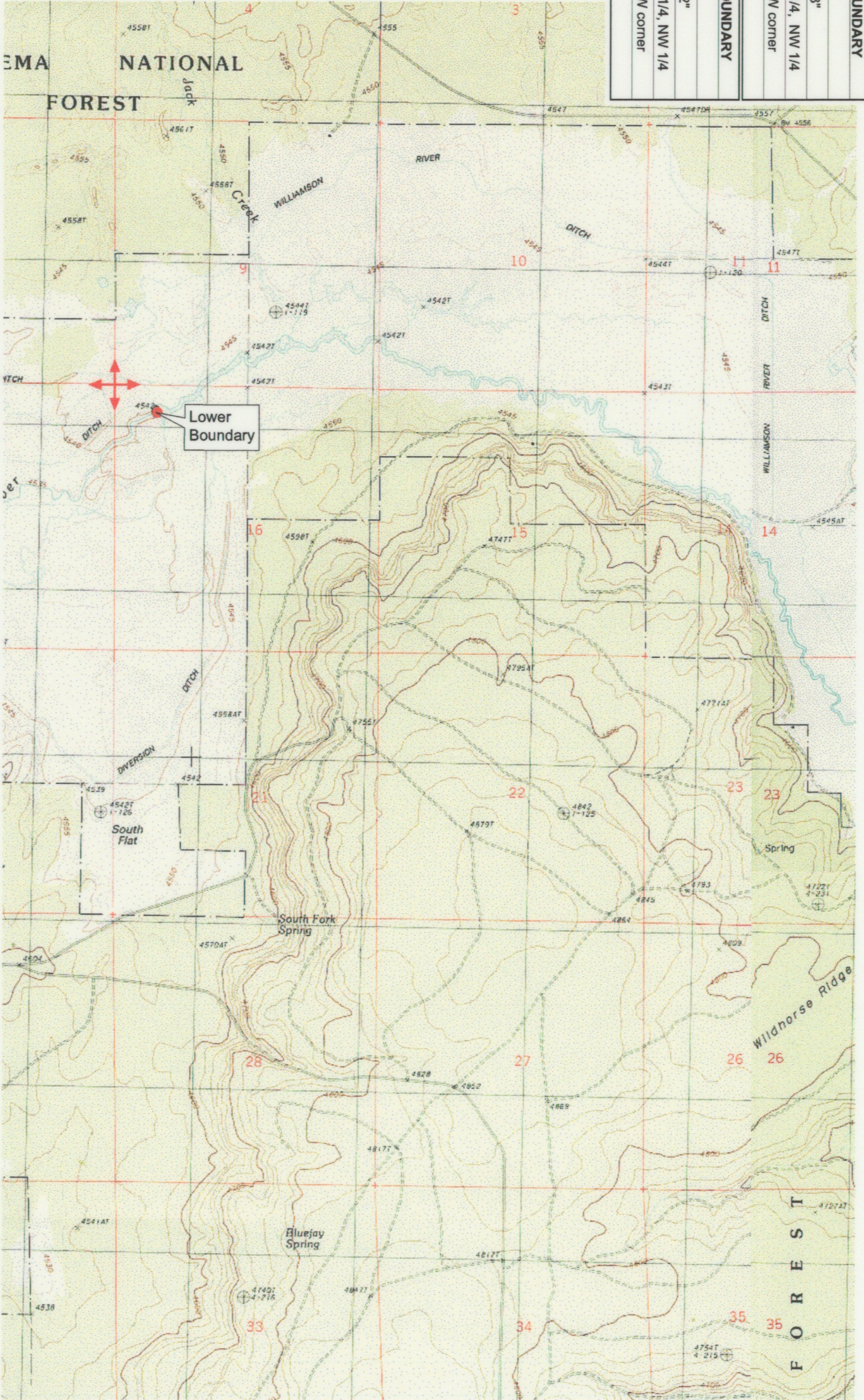
**Klamath Basin Water Rights Claim #631**  
Department of the Interior Bureau of Indian Affairs  
Reach Name: **Williamson River #7 (WM 7)**  
Scale: 1:24,000  
(Amended)

\\lafayette\k\Graphics\Projects\GIS\BIA\60177\_26\Topo\1117gms1.frb

<b>UPPER REACH BOUNDARY</b>	
Latitude: 42° 50' 42.76"	
Longitude: 121° 27' 42.03"	
T 31S, R 11E, S 31, NW 1/4, NW 1/4	
Bearing/Distance: From NW corner	
S 21° 33' 6" E, 1,568.4 Ft.	
<b>LOWER REACH BOUNDARY</b>	
Latitude: 42° 58' 31.43"	
Longitude: 121° 32' 35.82"	
T 30S, R 10E, S 16, NW 1/4, NW 1/4	
Bearing/Distance: From NW corner	
S 37° 9' 19" E, 1,554.0 Ft.	



Source: USGS 7.5 Minute Quad:  
The Bull Pasture, Gordon Lake,  
Wildhorse Ridge.  
Vertical Datum: National Geodetic  
Horizontal Datum of 1929.  
Horizontal Datum: 1927 North  
American Datum.



**KLAMATH ADJUDICATION**  
CLAIM # **631** PAGE # **024**

Reach boundaries: Deep Creek to Klamath Marsh.  
Plate 4 of 4.

**RECEIVED**

OCT 01 1999

WATER RESOURCES DEPT.  
SALEM, OREGON

Klamath Basin Water Rights Claim #631

Department of the Interior Bureau of Indian Affairs

Reach Name: **Williamson River #7 (WM 7)**

Scale: 1:24,000 (Amended)

\\lafayette\Graphics\Projects\GIS\BIA\60177\_26\Topo\1117gls1.mxd