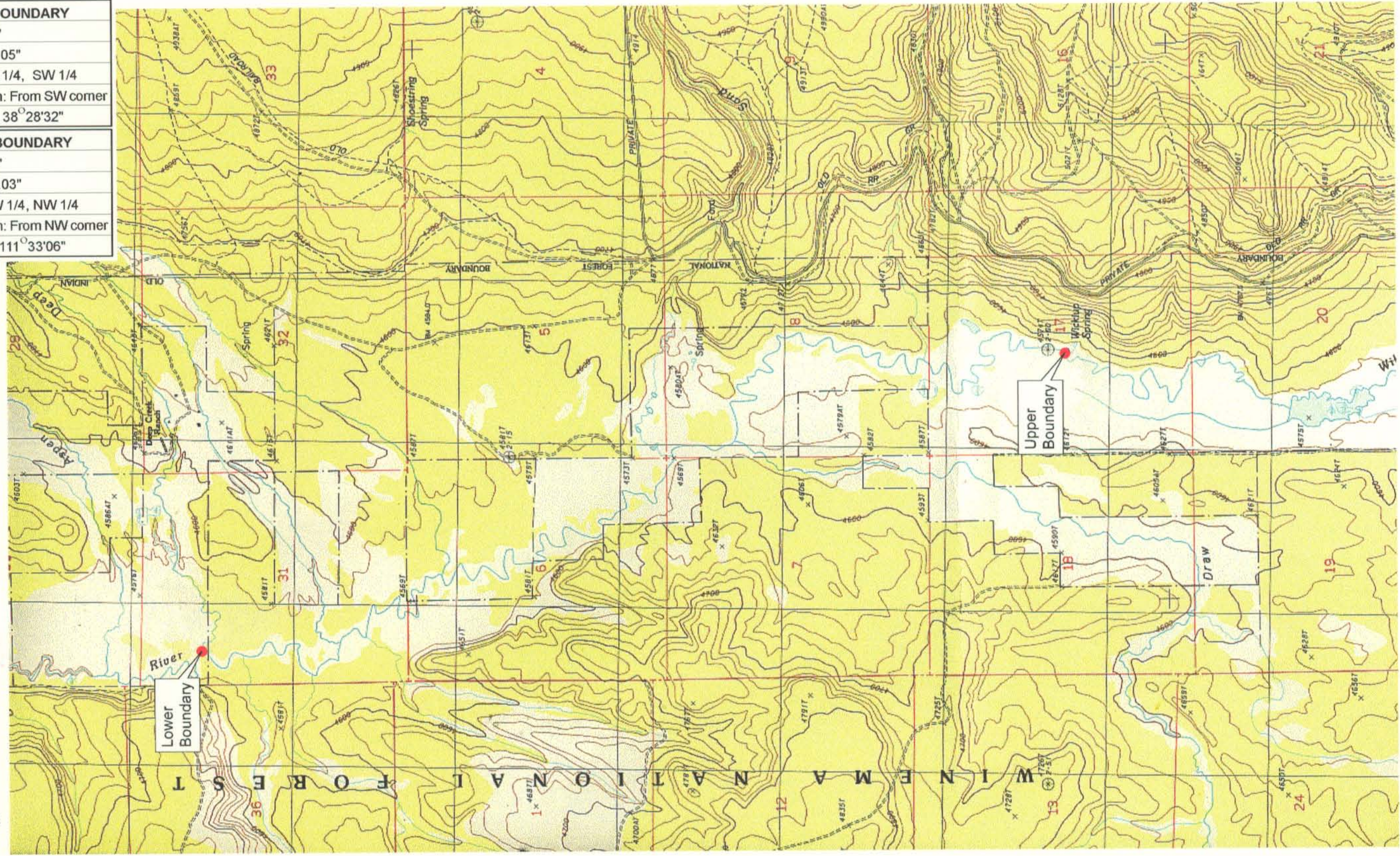


UPPER REACH BOUNDARY

Latitude: 42° 47' 50.07"
Longitude: 121° 26' 23.05"
T 32S, R 11E, S 17, NE 1/4, SW 1/4
Distance/Bearing/Azimuth: From SW corner
N 38° 28' 32" E, 968.0m, 38° 28' 32"

LOWER REACH BOUNDARY

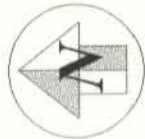
Latitude: 42° 50' 42.76"
Longitude: 121° 27' 42.03"
T 31S, R 11E, S 31, NW 1/4, NW 1/4
Distance/Bearing/Azimuth: From NW corner
S 68° 26' 54" E, 475.0m, 111° 33' 06"



RECEIVED

MAR 01 1999

WATER RESOURCES DEPT.
SALEM, OREGON



Source: USGS 7.5 Minute
Quad: The Bull Pasture.

Vertical Datum: National
Geodetic Vertical Datum of 1929.
Horizontal Datum: 1927 North
American Datum.

KLAMATH ADJUDICATION

CLAIM 632 PAGE # 04

Reach boundaries: Wickiup Spring to Deep Creek.
Plate 1 of 1.

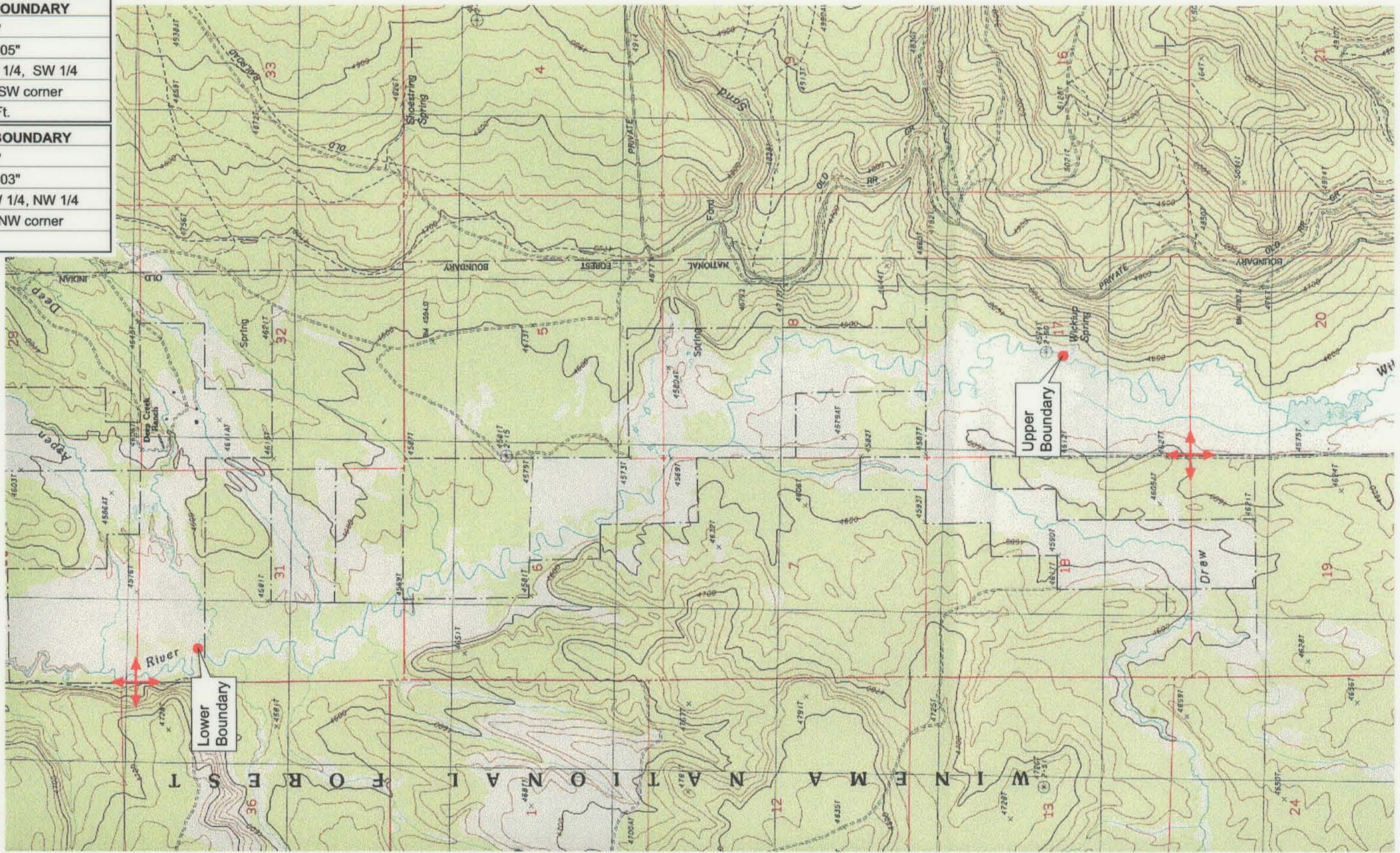
Klamath Basin Water Rights Claim Map

Department of the Interior Bureau of Indian Affairs

Reach Name: **Williamson River #8**

Scale: 1:24,000

UPPER REACH BOUNDARY
Latitude: 42° 47' 50.07"
Longitude: 121° 26' 23.05"
T 32S, R 11E, S 17, NE 1/4, SW 1/4
Bearing/Distance: From SW corner N 38°28'32" E, 3,176.1 Ft.
LOWER REACH BOUNDARY
Latitude: 42° 50' 42.76"
Longitude: 121° 27' 42.03"
T 31S, R 11E, S 31, NW 1/4, NW 1/4
Bearing/Distance: From NW corner S 21°33'6" E, 1,558.4



Source: USGS 7.5 Minute Quad: The Bull Pasture.
Vertical Datum: National Geodetic Vertical Datum of 1929.
Horizontal Datum: 1927 North American Datum.

KLAMATH ADJUDICATION
CLAIM # **632** PAGE # **015**

Reach boundaries: Wickiup Spring to Deep Creek.
Plate 1 of 1.

RECEIVED
OCT 01 1999

WATER RESOURCES DEPT.
SALEM, OREGON

Klamath Basin Water Rights Claim #632
Department of the Interior Bureau of Indian Affairs
Reach Name: **Williamson River #8 (WM 8)**
Scale: 1:24,000 (Amended)

\\Lafayette\Graphics\Projects\GIS\BIA\60177.26\Topo\1117gis1.fh8