

UPPER REACH BOUNDARY
Latitude: 42° 44' 0.99"
Longitude: 121° 25' 23.67"
T 33S, R 11E, S 4, SW 1/4, SW 1/4
Distance/Bearing/Azimuth: From SW corner N 58° 19' 13" E, 367.8m, 58° 19' 13"
LOWER REACH BOUNDARY
Latitude: 42° 47' 50.07"
Longitude: 121° 26' 23.05"
T 32S, R 11E, S 17, NE 1/4, SW 1/4
Distance/Bearing/Azimuth: From SW corner N 38° 28' 32" E, 968.0m, 38° 28' 32"

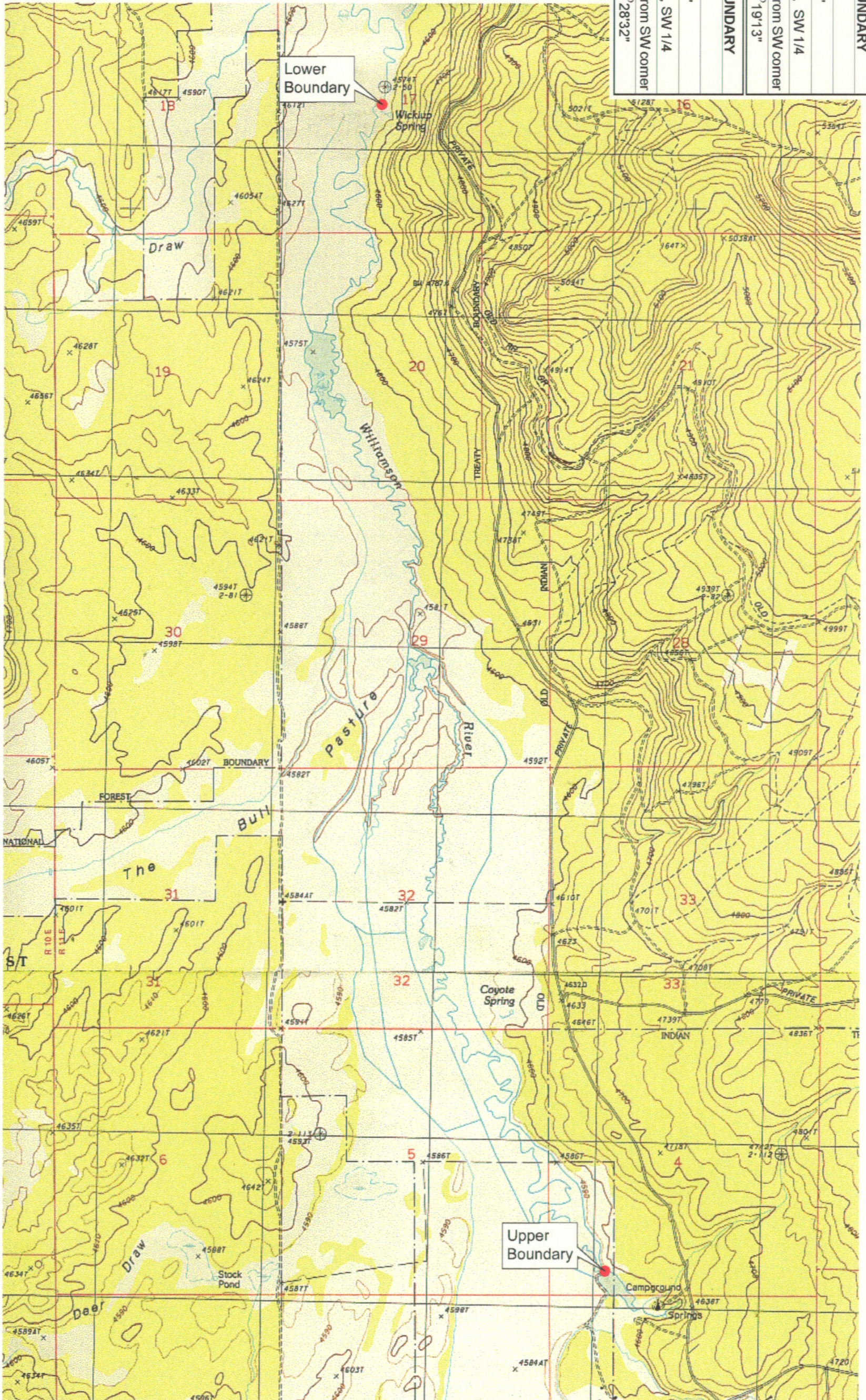
RECEIVED

MAR 01 1999

WATER RESOURCES DEPT.
SALEM, OREGON



Source: USGS 7.5 Minute Quad:
The Bull Pasture, Fuego Mtn.
Vertical Datum: National Geodetic
Vertical Datum of 1929.
Horizontal Datum: 1927 North
American Datum.

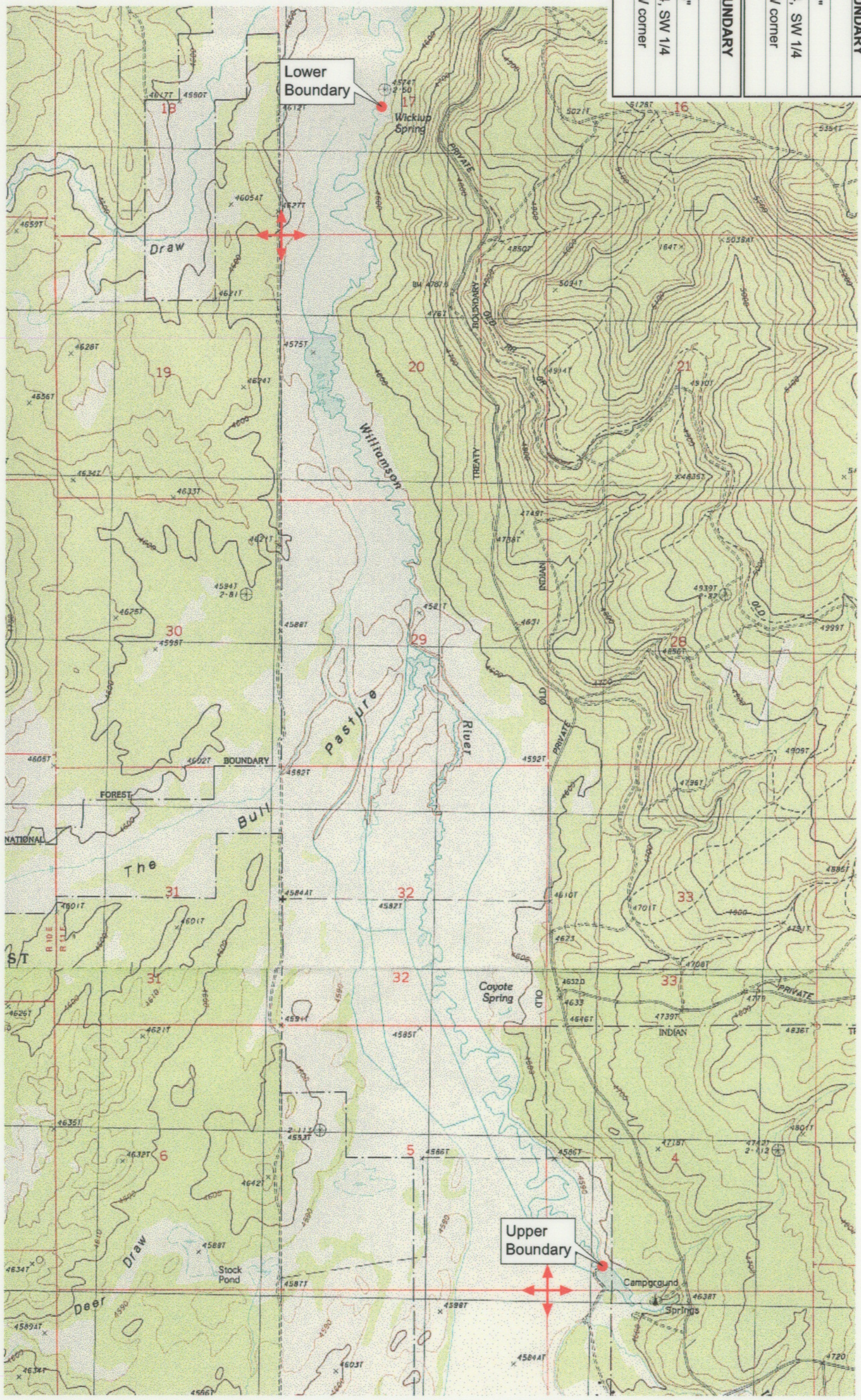


KLAMATH ADJUDICATION
CLAIM 633 PAGE # **04**

Reach boundaries: Campground Springs to Wickiup Spring.
Plate 1 of 1.

Klamath Basin Water Rights Claim Map
Department of the Interior Bureau of Indian Affairs
Reach Name: **Williamson River #9**
Scale: 1:24,000

UPPER REACH BOUNDARY
Latitude: 42° 44' 0.99"
Longitude: 121° 25' 23.67"
T 33S, R 11E, S 4, SW 1/4, SW 1/4
Bearing/Distance: From SW corner N 58° 19' 13" E, 1,206.9 Ft.
LOWER REACH BOUNDARY
Latitude: 42° 47' 50.07"
Longitude: 121° 26' 23.05"
T 32S, R 11E, S 17, NE 1/4, SW 1/4
Bearing/Distance: From SW corner N 38° 28' 32" E, 3,176.1 Ft.



Source: USGS 7.5 Minute Quad:
The Bull Pasture, Fuego Mtn.
Vertical Datum: National Geodetic
Horizontal Datum of 1929.
Horizontal Datum: 1927 North
American Datum.

KLAMATH ADJUDICATION
CLAIM # 633 PAGE # **015**

Reach boundaries: Campground Springs to Wickiup Spring.
Plate 1 of 1.

RECEIVED

OCT 01 1999

WATER RESOURCES DEPT.
SALEM, OREGON

Klamath Basin Water Rights Claim #633

Department of the Interior Bureau of Indian Affairs

Reach Name: **Williamson River #9 (WM 9)**

Scale: 1:24,000 (Amended)

\\lafayette\Graphics\Projects\GIS\BIA\60177_26\topo\1117gus1.fth8