

UPPER REACH BOUNDARY	
Latitude:	42° 37' 59.01"
Longitude:	121° 51' 7.53"
T 34S, R 7E, S 11, SW 1/4, SW 1/4	
Distance/Bearing/Azimuth:	From SW corner N 68° 23' 15" E, 387.9m, 68° 23' 15"
LOWER REACH BOUNDARY	
Latitude:	42° 39' 7.97"
Longitude:	121° 51' 30.82"
T 34S, R 7E, S 3, NE 1/4, SE 1/4	
Distance/Bearing/Azimuth:	From SE corner N 74° 31' 21" W, 668.2m, 285° 28' 39"

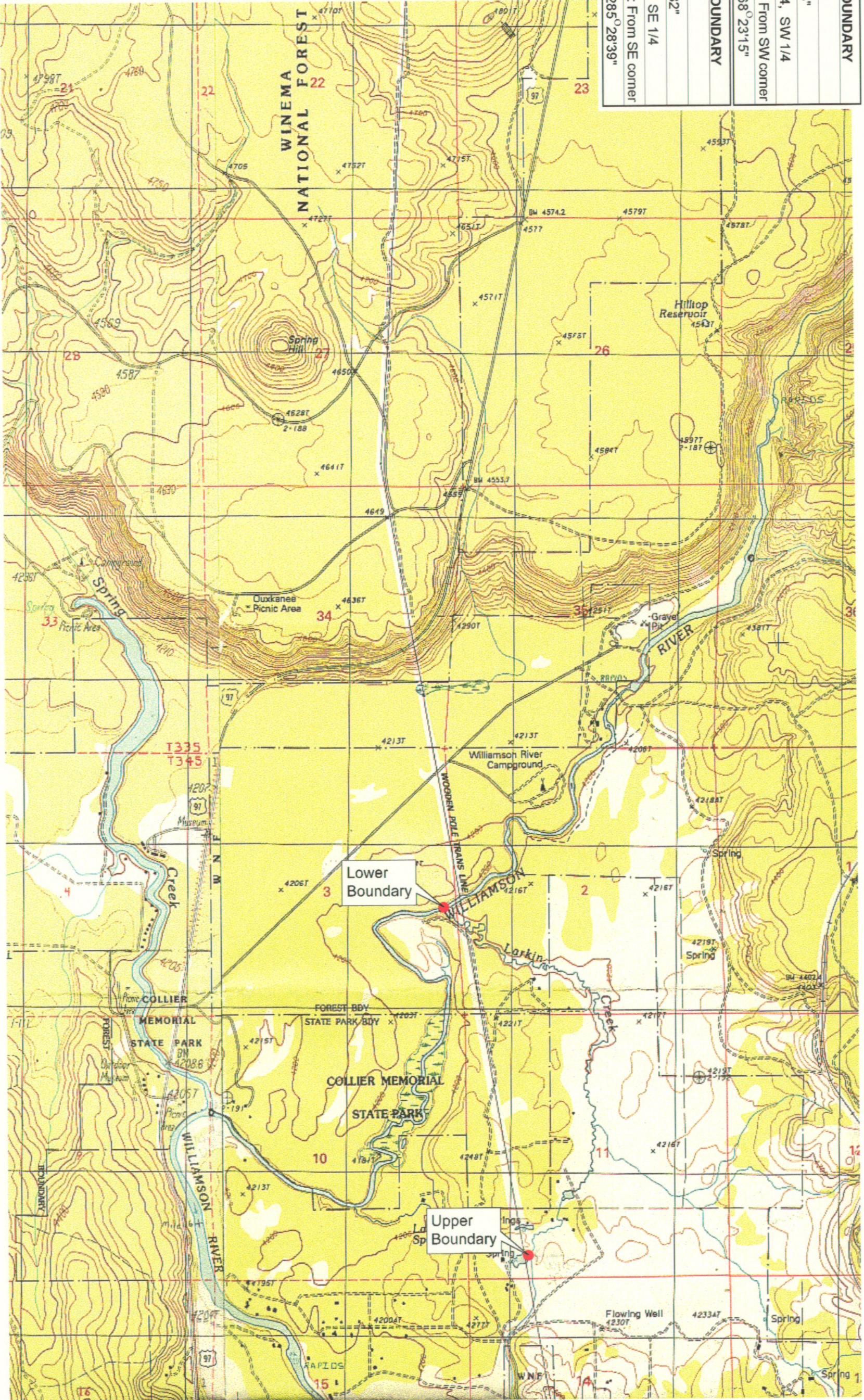
RECEIVED

MAR 01 1999

WATER RESOURCES DEPT.
SALEM, OREGON



Source: USGS 7.5 Minute
Quad: Solomon Butte, Fort
Klamath.
Vertical Datum: National
Geodetic Vertical Datum of
1929.
Horizontal Datum: 1927 North
American Datum.



KLAMATH ADJUDICATION
CLAIM 634 PAGE # 04

Reach: Larkin Creek
Plate 1 of 1.

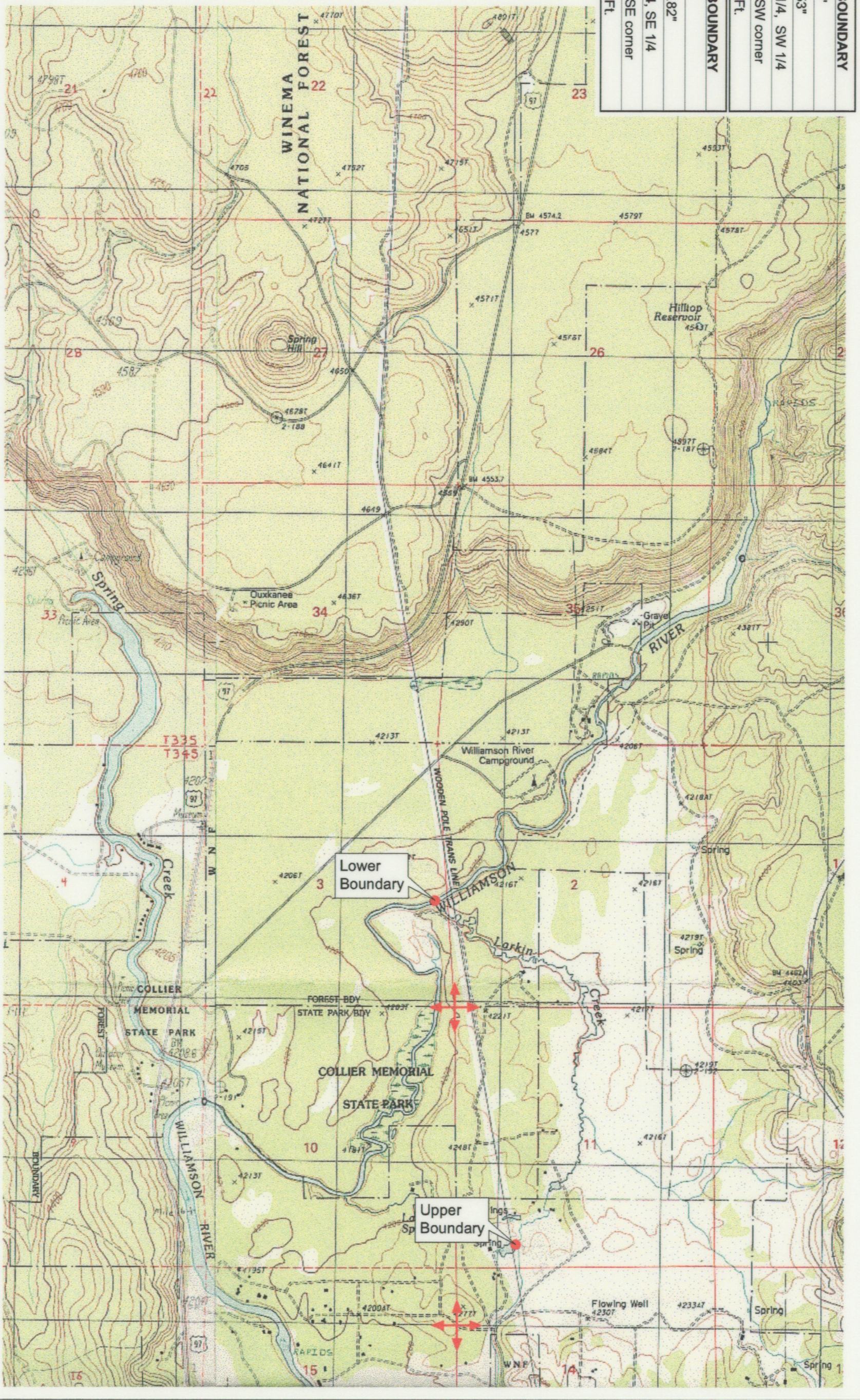
Klamath Basin Water Rights Claim Map
Department of the Interior Bureau of Indian Affairs
Reach Name: Williamson River #10
Scale: 1:24,000

f:\aer\graphics\1117gsl.fms

UPPER REACH BOUNDARY
Latitude: 42° 37' 59.01"
Longitude: 121° 51' 7.53"
T 34S, R 7E, S 11, SW 1/4, SW 1/4
Bearing/Distance: From SW corner N 68° 23' 15" E, 1,272.6 Ft.
LOWER REACH BOUNDARY
Latitude: 42° 39' 7.97"
Longitude: 121° 51' 30.82"
T 34S, R 7E, S 3, NE 1/4, SE 1/4
Bearing/Distance: From SE corner N 15° 28' 39" W, 2,192.4 Ft.



Source: USGS 7.5 Minute Quad: Solomon Butte, Fort Klamath.
Vertical Datum: National Geodetic Vertical Datum of 1929.
Horizontal Datum: 1927 North American Datum.



KLAMATH ADJUDICATION
CLAIM # **634** PAGE # **015**

Reach: Larkin Creek.
Plate 1 of 1.

RECEIVED
OCT 01 1999
WALTER RESOURCES DEPT.
SALEM, OREGON

Klamath Basin Water Rights Claim #634
Department of the Interior Bureau of Indian Affairs
Reach Name: Williamson River #10 (WM 10)
Scale: 1:24,000
(Amended)
\\lafayette\Graphics\Projects\GIS\BIA\60177_261\Topo\117\gs1.fth8