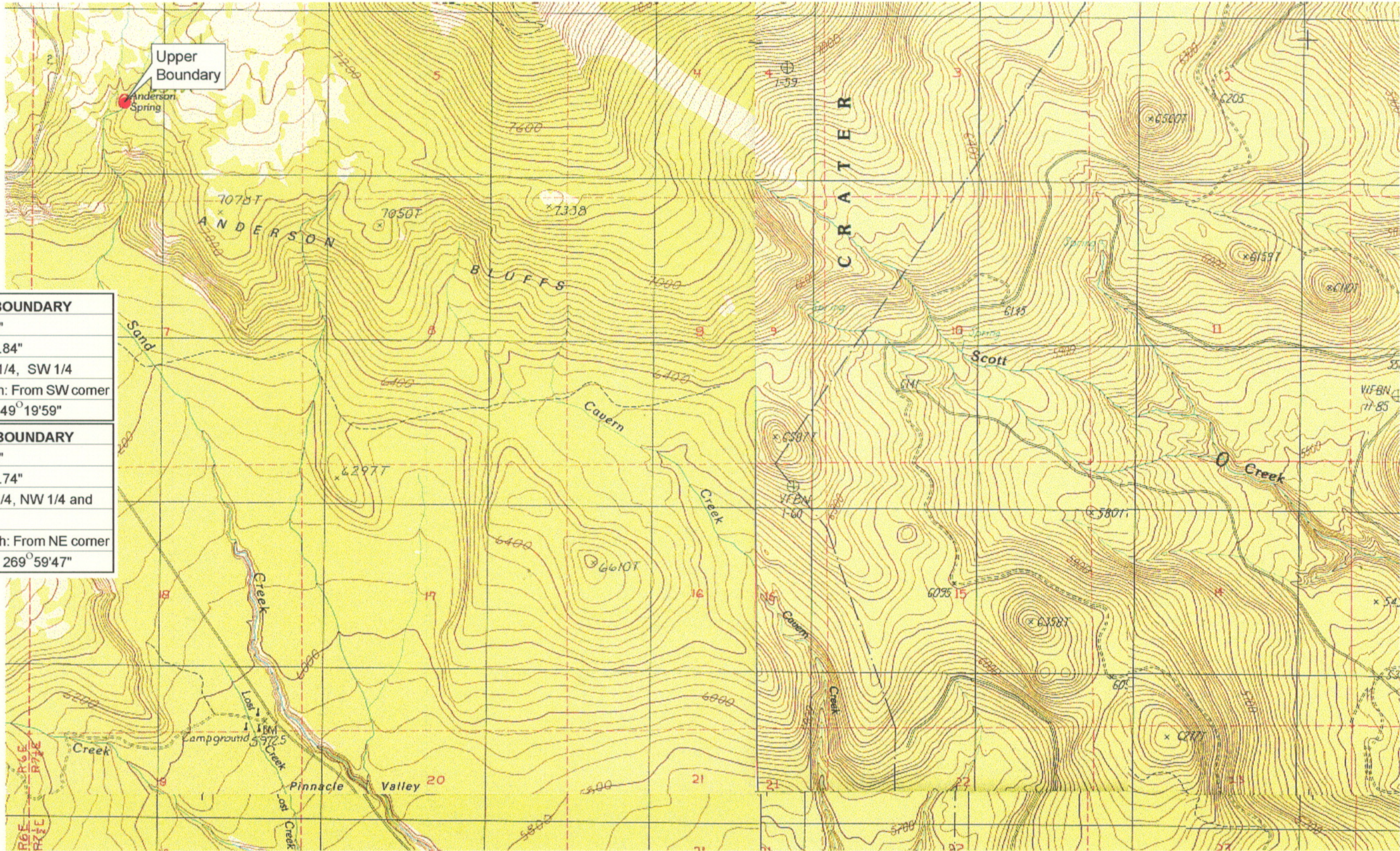


RECEIVED

MAR 01 1999

WATER RESOURCES DEPT.  
SALEM, OREGON



UPPER REACH BOUNDARY	
Latitude:	42° 54' 48.78"
Longitude:	122° 02' 50.84"
T 31S, R 7.5E, S 6, NE 1/4, SW 1/4	
Distance/Bearing/Azimuth: From SW corner N 49° 19' 59" E, 633.3m, 49° 19' 59"	
LOWER REACH BOUNDARY	
Latitude:	42° 52' 42.53"
Longitude:	121° 48' 27.74"
T 31S, R 8E, S 19, NE 1/4, NW 1/4 and NW 1/4, NE 1/4	
Distance/Bearing/Azimuth: From NE corner S 89° 59' 47" W, 775.6m, 269° 59' 47"	



Source: USGS 7.5 Minute  
Quad: Crater Lake East, Sun  
Pass, Fuego, Lenz, Pothole  
Butte, Maklaks Crater.

Vertical Datum: National  
Geodetic Vertical Datum of  
1929.

Horizontal Datum: 1927 North  
American Datum.

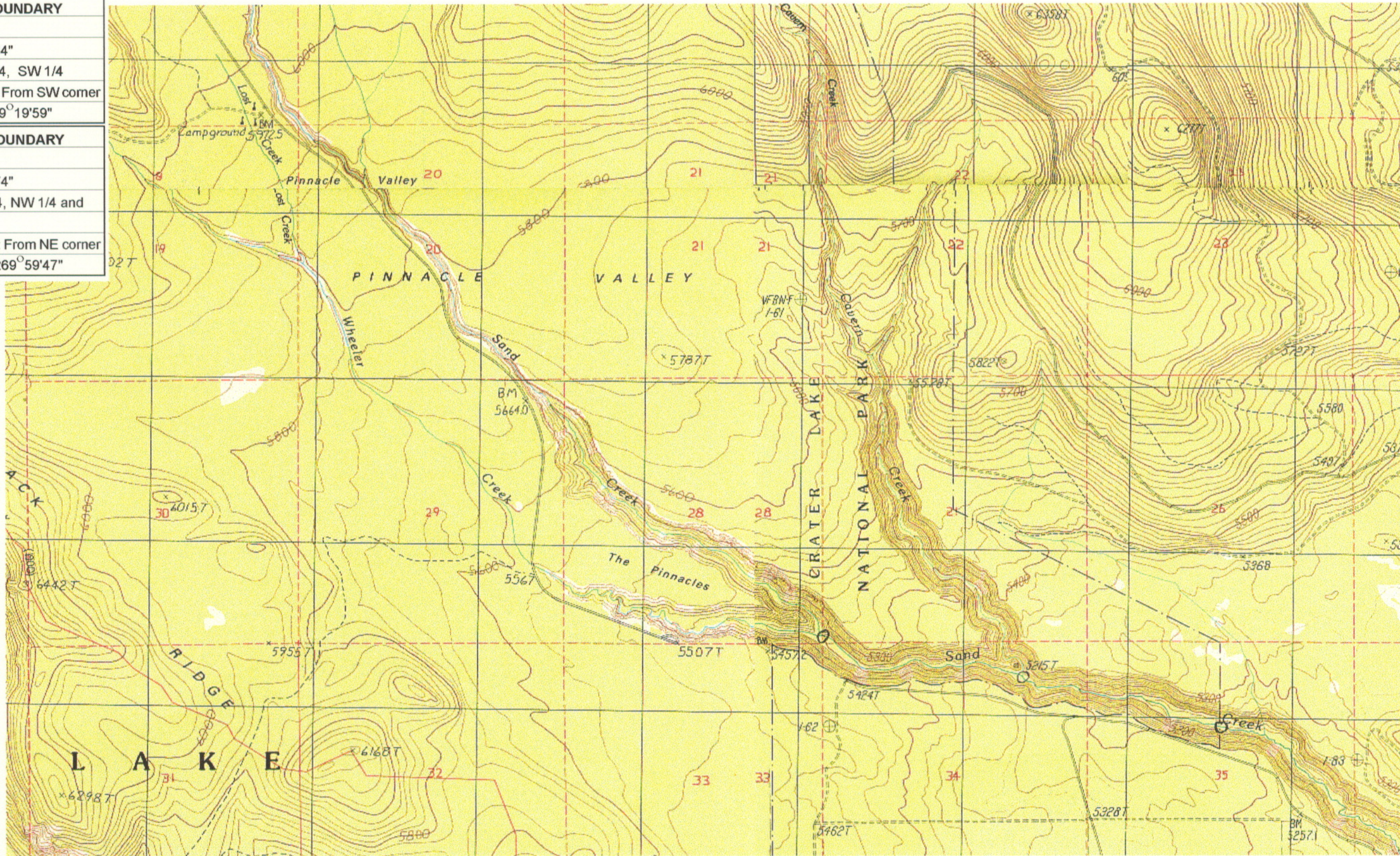
**KLAMATH ADJUDICATION**  
**CLAIM # 635 PAGE # 07**

Reach: Sand Creek.  
Plate 1 of 4.

**Klamath Basin Water Rights Claim Map**  
Department of the Interior Bureau of Indian Affairs  
Reach Name: **Williamson River #11**  
Scale: 1:24,000



<b>UPPER REACH BOUNDARY</b>
Latitude: 42° 54' 48.78"
Longitude: 122° 02' 50.84"
T 31S, R 7.5E, S 6, NE 1/4, SW 1/4
Distance/Bearing/Azimuth: From SW corner N 49° 19' 59" E, 633.3m, 49° 19' 59"
<b>LOWER REACH BOUNDARY</b>
Latitude: 42° 52' 42.53"
Longitude: 121° 48' 27.74"
T 31S, R 8E, S 19, NE 1/4, NW 1/4 and NW 1/4, NE 1/4
Distance/Bearing/Azimuth: From NE corner S 89° 59' 47" W, 775.6m, 269° 59' 47"



RECEIVED

MAR 01 1999

WATER RESOURCES DEPT.  
SALEM, OREGON



Source: USGS 7.5 Minute  
Quad: Crater Lake East, Sun  
Pass, Fuego, Lenz, Pothole  
Butte, Maklaks Crater.

Vertical Datum: National  
Geodetic Vertical Datum of  
1929.  
Horizontal Datum: 1927 North  
American Datum.

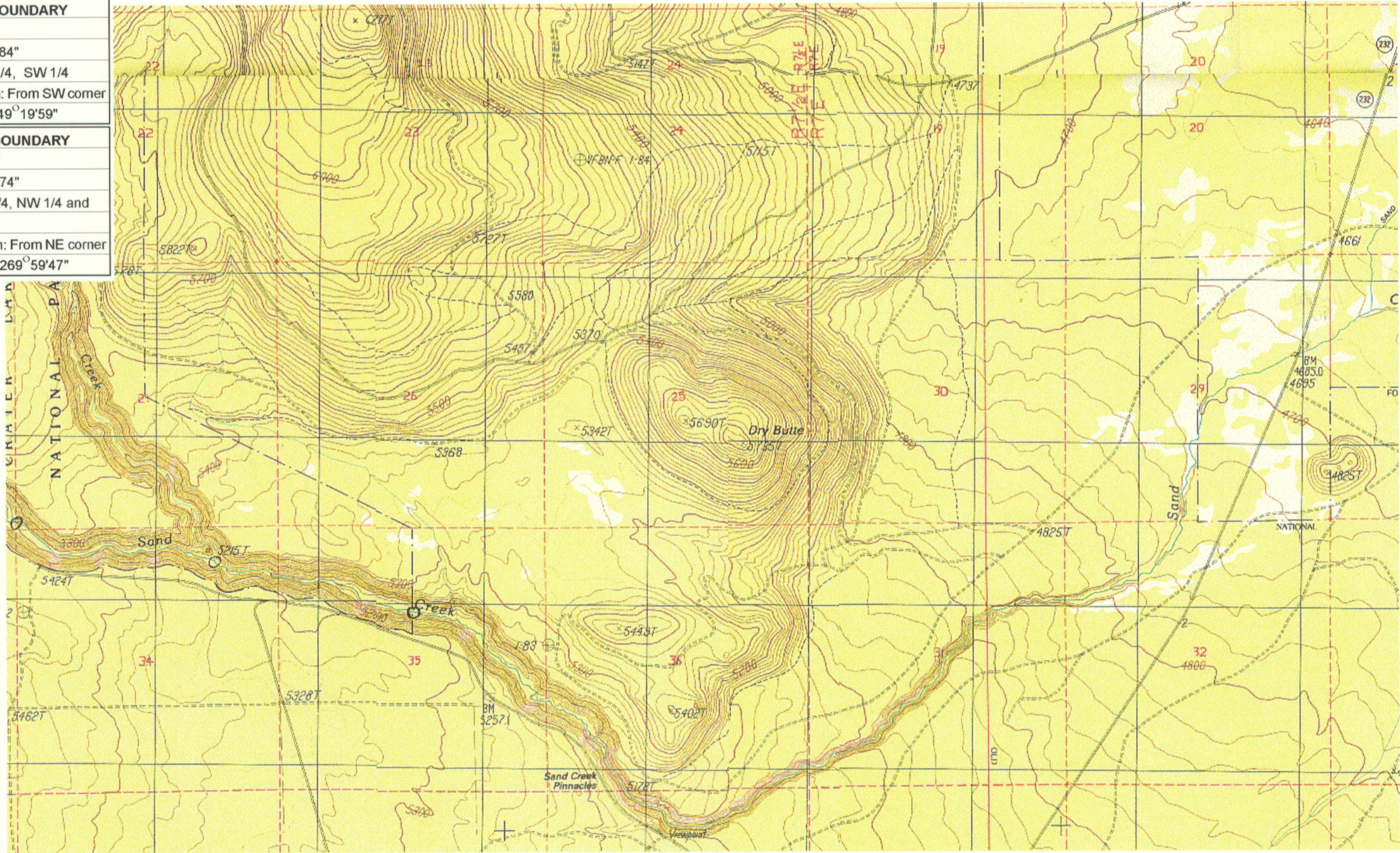
**KLAMATH ADJUDICATION**  
**CLAIM # 635 PAGE # 08**

Reach: Sand Creek.  
Plate 2 of 4.

**Klamath Basin Water Rights Claim Map**  
Department of the Interior Bureau of Indian Affairs  
Reach Name: **Williamson River #11**  
Scale: 1:24,000



<b>UPPER REACH BOUNDARY</b>
Latitude: 42° 54' 48.78"
Longitude: 122° 02' 50.84"
T 31S, R 7.5E, S 6, NE 1/4, SW 1/4
Distance/Bearing/Azimuth: From SW corner N 49° 19' 59" E, 633.3m, 49° 19' 59"
<b>LOWER REACH BOUNDARY</b>
Latitude: 42° 52' 42.53"
Longitude: 121° 48' 27.74"
T 31S, R 8E, S 19, NE 1/4, NW 1/4 and NW 1/4, NE 1/4
Distance/Bearing/Azimuth: From NE corner S 89° 59' 47" W, 775.6m, 269° 59' 47"



RECEIVED

MAR 01 1999

WATER RESOURCES DEPT.  
SALEM, OREGON



Source: USGS 7.5 Minute  
Quad: Crater Lake East, Sun  
Pass, Fuego, Lenz, Pothole  
Butte, Maklaks Crater.

Vertical Datum: National  
Geodetic Vertical Datum of  
1929.  
Horizontal Datum: 1927 North  
American Datum.

**KLAMATH ADJUDICATION**  
CLAIM # **635** PAGE # **09**

Reach: Sand Creek.  
Plate 3 of 4.

**Klamath Basin Water Rights Claim Map**  
Department of the Interior Bureau of Indian Affairs  
Reach Name: **Williamson River #11**  
Scale: 1:24,000



<b>UPPER REACH BOUNDARY</b>
Latitude: 42° 54' 48.78"
Longitude: 122° 02' 50.84"
T 31S, R 7.5E, S 6, NE 1/4, SW 1/4
Distance/Bearing/Azimuth: From SW corner N 49° 19' 59" E, 633.3m, 49° 19' 59"
<b>LOWER REACH BOUNDARY</b>
Latitude: 42° 52' 42.53"
Longitude: 121° 48' 27.74"
T 31S, R 8E, S 19, NE 1/4, NW 1/4 and NW 1/4, NE 1/4
Distance/Bearing/Azimuth: From NE corner S 89° 59' 47" W, 775.6m, 269° 59' 47"



**RECEIVED**

MAR 01 1999

WATER RESOURCES DEPT.  
SALEM, OREGON



Source: USGS 7.5 Minute  
Quad: Crater Lake East, Sun  
Pass, Fuego, Lenz, Pothole  
Butte, Maklaks Crater.

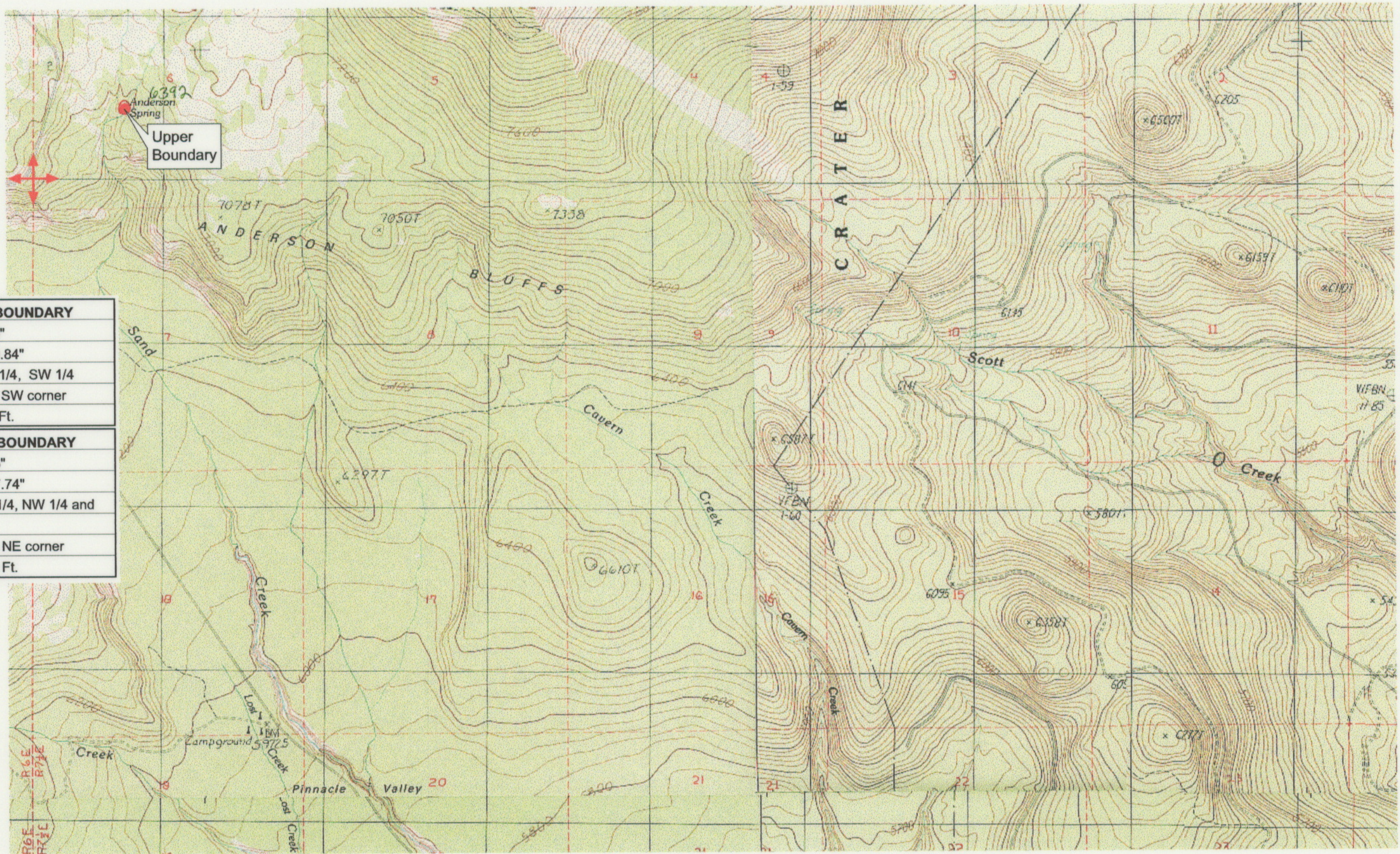
Vertical Datum: National  
Geodetic Vertical Datum of  
1929.  
Horizontal Datum: 1927 North  
American Datum.

**KLAMATH ADJUDICATION**  
**CLAIM # 635 PAGE # 10**

Reach: Sand Creek.  
Plate 4 of 4.

**Klamath Basin Water Rights Claim Map**  
Department of the Interior Bureau of Indian Affairs  
Reach Name: **Williamson River #11**  
Scale: 1:24,000





UPPER REACH BOUNDARY	
Latitude:	42° 54' 48.78"
Longitude:	122° 02' 50.84"
T 31S, R 7.5E, S 6, NE 1/4, SW 1/4	
Bearing/Distance: From SW corner N 49° 19' 59" E, 2,077.8 Ft.	
LOWER REACH BOUNDARY	
Latitude:	42° 52' 42.53"
Longitude:	121° 48' 27.74"
T 31S, R 8E, S 19, NE 1/4, NW 1/4 and NW 1/4, NE 1/4	
Bearing/Distance: From NE corner S 89° 59' 47" W, 2,544.8 Ft.	



Source: USGS 7.5 Minute  
Quad: Crater Lake East, Sun  
Pass, Fuego, Lenz, Pothole  
Butte, Maklaks Crater.

Vertical Datum: National  
Geodetic Vertical Datum of  
1929.  
Horizontal Datum: 1927 North  
American Datum.

**KLAMATH ADJUDICATION**  
**635**  
 CLAIM # PAGE # 021

Reach: Sand Creek.  
Plate 1 of 4.

**RECEIVED**

OCT 01 1999

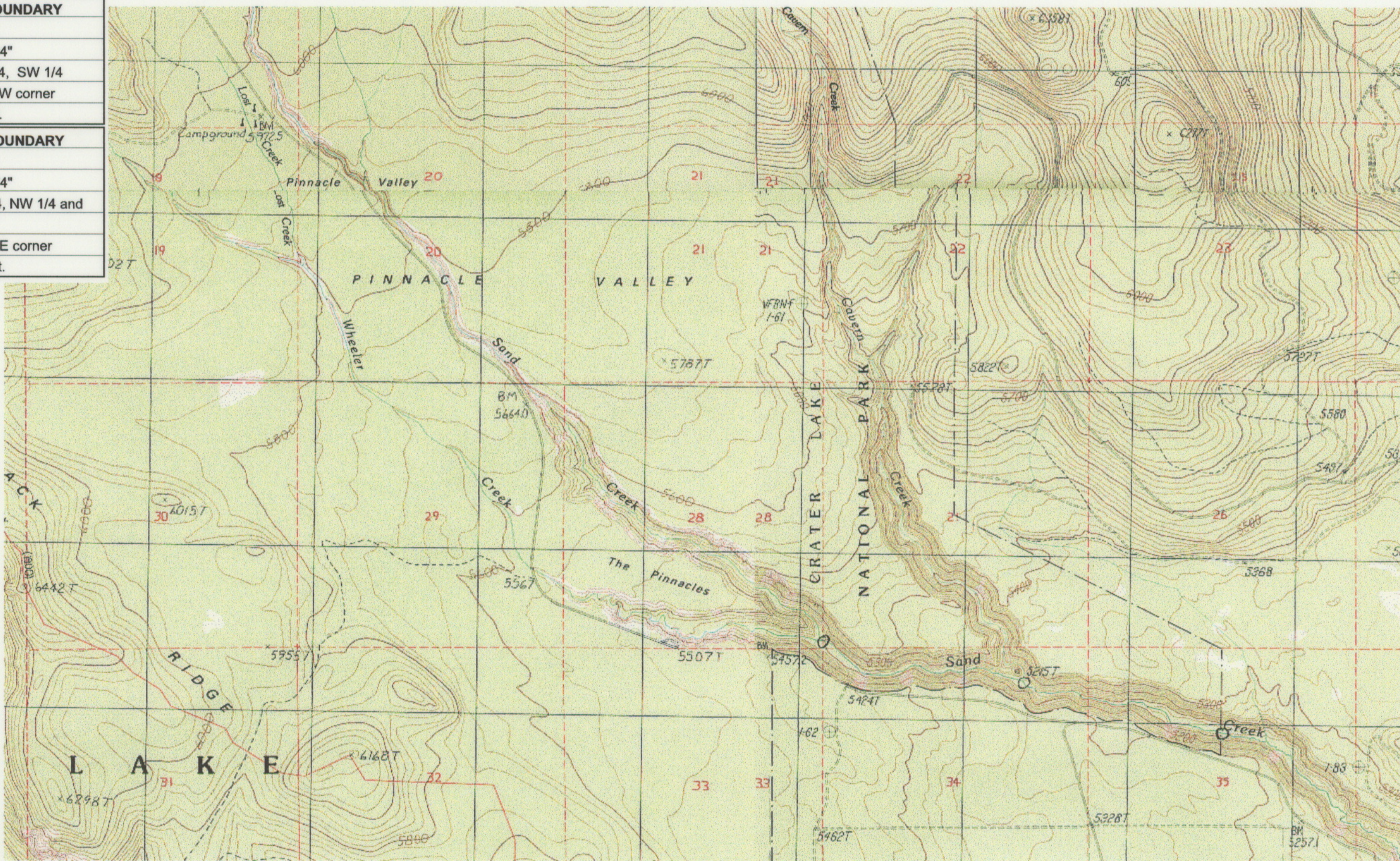
WATER RESOURCES DEPT.  
SALEM, OREGON

**Klamath Basin Water Rights Claim #635**  
 Department of the Interior Bureau of Indian Affairs  
 Reach Name: **Williamson River #11 (WM 11)**  
 Scale: 1:24,000 (Amended)

\\Lafayette\Graphics\Projects\GIS\BIA\60177.26\Topo\1117\gis1.fh8



<b>UPPER REACH BOUNDARY</b>
Latitude: 42° 54' 48.78"
Longitude: 122° 02' 50.84"
T 31S, R 7.5E, S 6, NE 1/4, SW 1/4
Bearing/Distance: From SW corner N 49° 19' 59" E, 2,077.8 Ft.
<b>LOWER REACH BOUNDARY</b>
Latitude: 42° 52' 42.53"
Longitude: 121° 48' 27.74"
T 31S, R 8E, S 19, NE 1/4, NW 1/4 and NW 1/4, NE 1/4
Bearing/Distance: From NE corner S 89° 59' 47" W, 2,544.8 Ft.



Source: USGS 7.5 Minute  
 Quad: Crater Lake East, Sun  
 Pass, Fuego, Lenz, Pothole  
 Butte, Maklaks Crater.

Vertical Datum: National  
 Geodetic Vertical Datum of  
 1929.  
 Horizontal Datum: 1927 North  
 American Datum.

**KLAMATH ADJUDICATION**  
**635**  
 CLAIM # PAGE # 022

Reach: Sand Creek.  
 Plate 2 of 4.

**RECEIVED**

OCT 01 1999

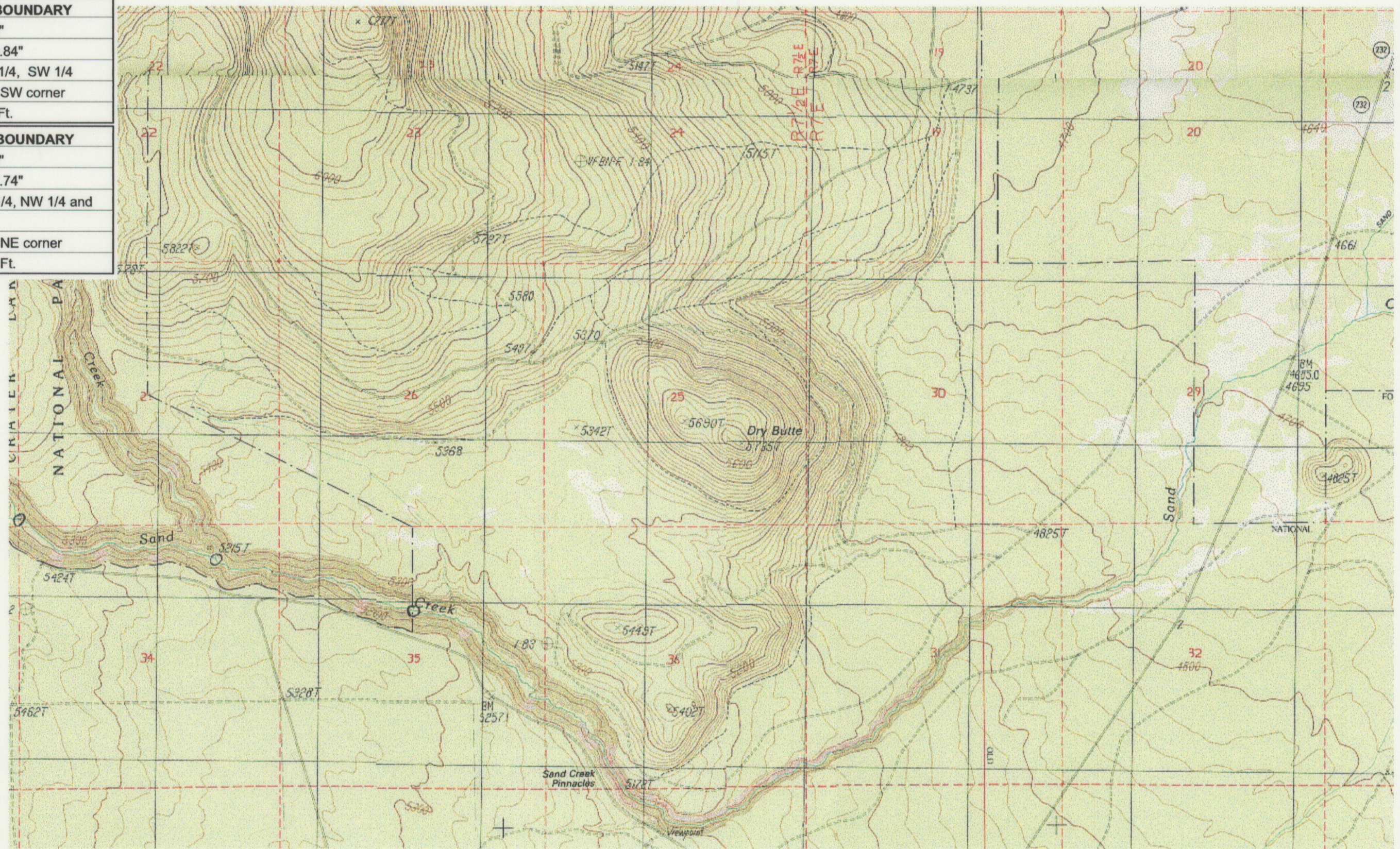
WATER RESOURCES DEPT.  
 SALEM, OREGON

**Klamath Basin Water Rights Claim #635**  
 Department of the Interior Bureau of Indian Affairs  
 Reach Name: **Williamson River #11 (WM 11)**  
 Scale: 1:24,000 (Amended)

\\Lafayette\Graphics\Projects\GIS\BIA\60177.26\Topo\1117gis1.fh8



<b>UPPER REACH BOUNDARY</b>
Latitude: 42° 54' 48.78"
Longitude: 122° 02' 50.84"
T 31S, R 7.5E, S 6, NE 1/4, SW 1/4
Bearing/Distance: From SW corner N 49° 19' 59" E, 2,077.8 Ft.
<b>LOWER REACH BOUNDARY</b>
Latitude: 42° 52' 42.53"
Longitude: 121° 48' 27.74"
T 31S, R 8E, S 19, NE 1/4, NW 1/4 and NW 1/4, NE 1/4
Bearing/Distance: From NE corner S 89° 59' 47" W, 2,544.8 Ft.



Source: USGS 7.5 Minute  
Quad: Crater Lake East, Sun  
Pass, Fuego, Lenz, Pothole  
Butte, Maklaks Crater.

Vertical Datum: National  
Geodetic Vertical Datum of  
1929.  
Horizontal Datum: 1927 North  
American Datum.

**KLAMATH ADJUDICATION**

**CLAIM # 635 PAGE # 023**

Reach: Sand Creek.  
Plate 3 of 4.

**RECEIVED**

OCT 01 1999

WATER RESOURCES DEPT.  
SALEM, OREGON

**Klamath Basin Water Rights Claim #635**

Department of the Interior Bureau of Indian Affairs

Reach Name: **Williamson River #11 (WM 11)**

Scale: 1:24,000 (Amended)

\\Lafayette\Graphics\Projects\GIS\BIA\60177.26\Topo\1117gis1.h8



<b>UPPER REACH BOUNDARY</b>
Latitude: 42° 54' 48.78"
Longitude: 122° 02' 50.84"
T 31S, R 7.5E, S 6, NE 1/4, SW 1/4
Bearing/Distance: From SW corner N 49° 19' 59" E, 2,077.8 Ft.
<b>LOWER REACH BOUNDARY</b>
Latitude: 42° 52' 42.53"
Longitude: 121° 48' 27.74"
T 31S, R 8E, S 19, NE 1/4, NW 1/4 and NW 1/4, NE 1/4
Bearing/Distance: From NE corner S 89° 59' 47" W, 2,544.8 Ft.



Source: USGS 7.5 Minute Quad: Crater Lake East, Sun Pass, Fuego, Lenz, Pothole Butte, Makiaks Crater.

Vertical Datum: National Geodetic Vertical Datum of 1929.  
Horizontal Datum: 1927 North American Datum.

**KLAMATH ADJUDICATION**  
**635**  
 CLAIM # PAGE # 024

Reach: Sand Creek.  
Plate 4 of 4.

**RECEIVED**

OCT 01 1999

WATER RESOURCES DEPT.  
SALEM, OREGON

**Klamath Basin Water Rights Claim #635**  
 Department of the Interior Bureau of Indian Affairs  
 Reach Name: **Williamson River #11 (WM 11)**  
 Scale: 1:24,000 (Amended)

\\Lafayette\Graphics\Projects\GIS\BIA\60177.26\Topo\1117gis1.hb