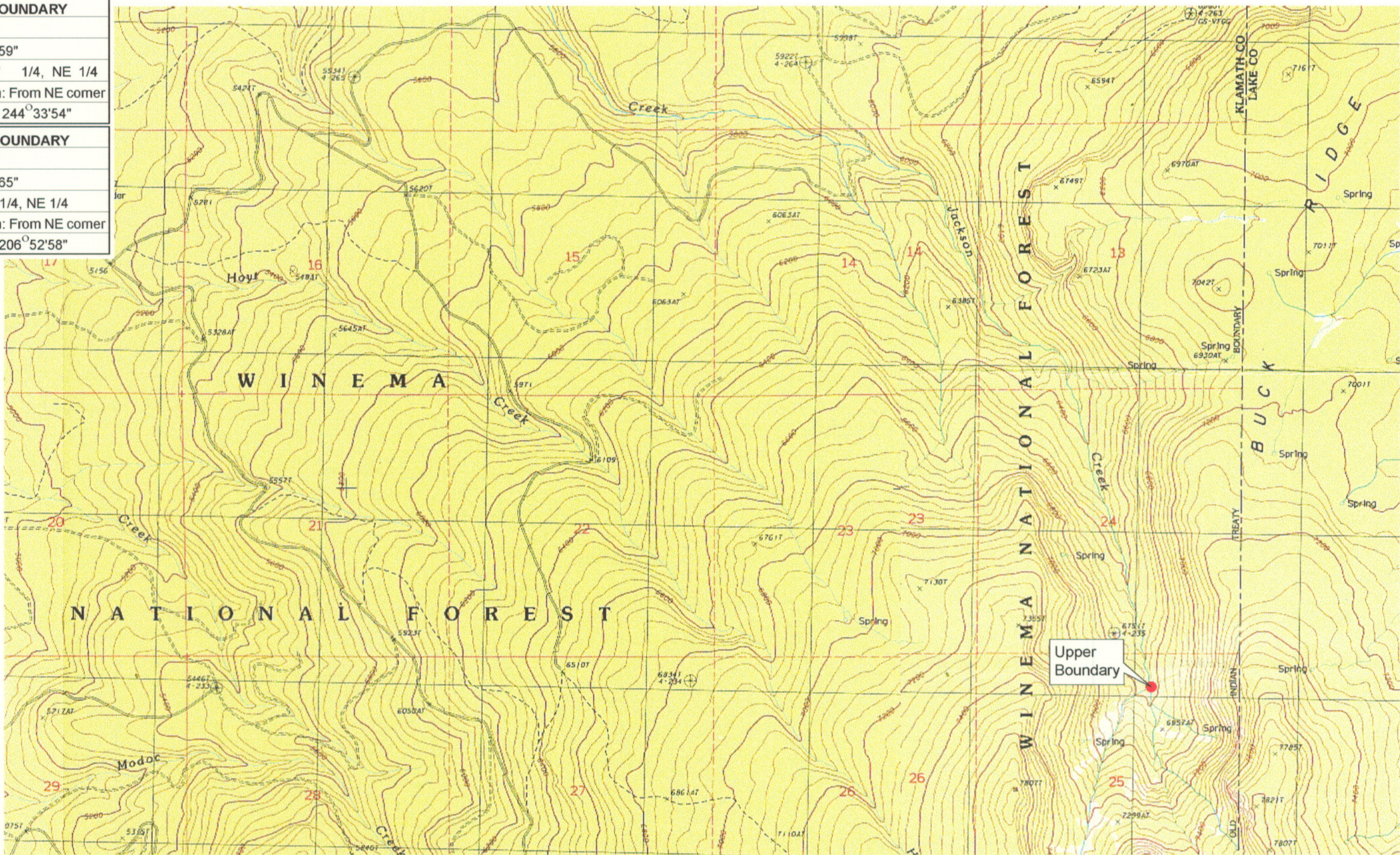


UPPER REACH BOUNDARY
Latitude: 42° 56' 50.20"
Longitude: 121° 21' 22.59"
T 30S, R 11E, S 25, NW 1/4, NE 1/4
Distance/Bearing/Azimuth: From NE corner S 64°33'54" W, 637.5m, 244°33'54"
LOWER REACH BOUNDARY
Latitude: 42° 57' 35.97"
Longitude: 121° 29' 26.65"
T 30S, R 10E, S 23, SE 1/4, NE 1/4
Distance/Bearing/Azimuth: From NE corner S 26°52'58" W, 502.1m, 206°52'58"



RECEIVED

MAR 01 1999

WATER RESOURCES DEPT.
SALEM, OREGON



Source: USGS 7.5 Minute
Quad: Gordon Lake, Yamsay
Mtn.

Vertical Datum: National
Geodetic Vertical Datum of
1929.
Horizontal Datum: 1927 North
American Datum.

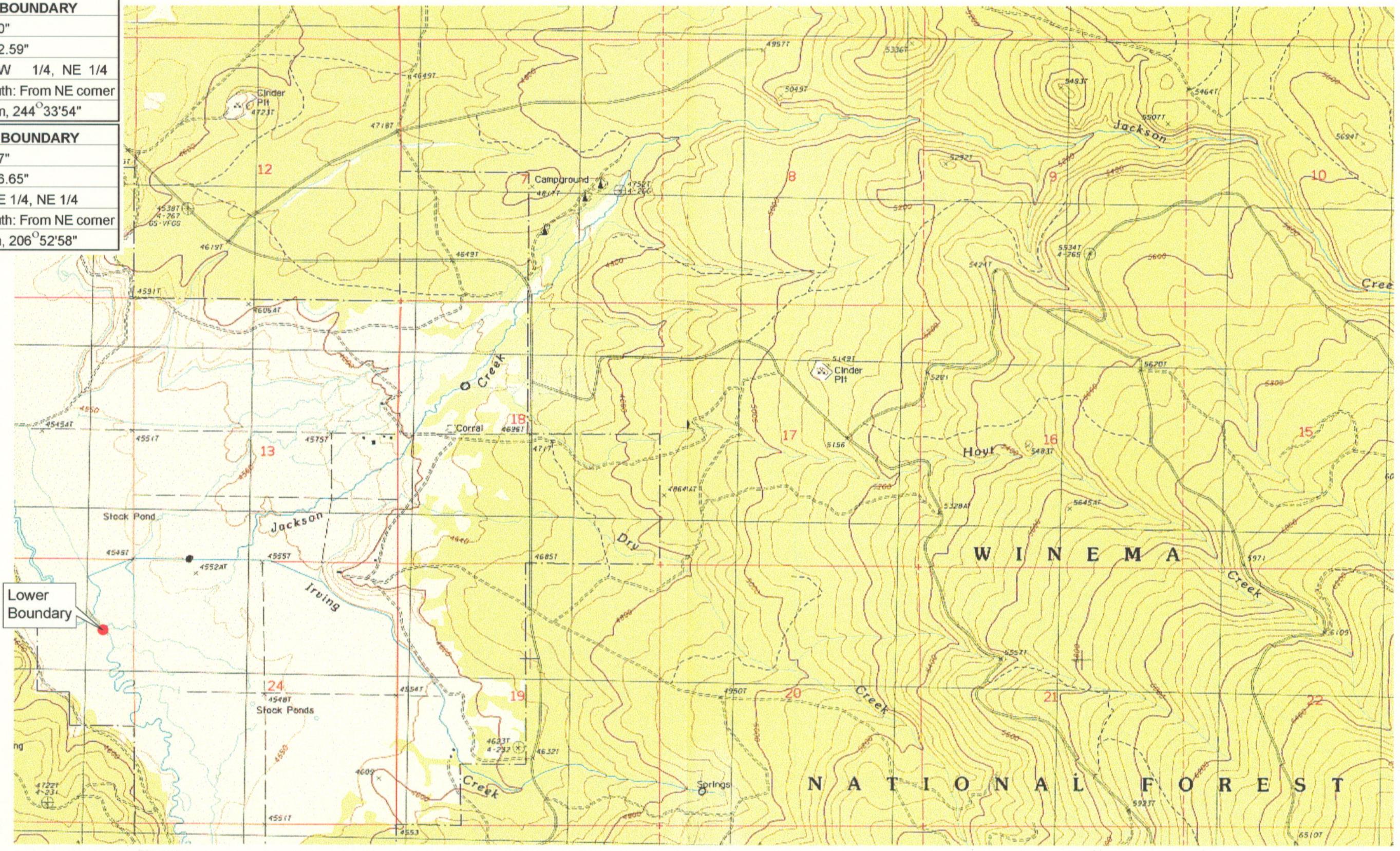
KLAMATH ADJUDICATION
CLAIMS **637** PAGE # **5**

Reach: Jackson Creek.
Plate 1 of 2.

Klamath Basin Water Rights Claim Map
Department of the Interior Bureau of Indian Affairs
Reach Name: **Williamson River #14**
Scale: 1:24,000

UPPER REACH BOUNDARY
Latitude: 42° 56' 50.20"
Longitude: 121° 21' 22.59"
T 30S, R 11E, S 25, NW 1/4, NE 1/4
Distance/Bearing/Azimuth: From NE corner S 64°33'54" W, 637.5m, 244°33'54"
LOWER REACH BOUNDARY
Latitude: 42° 57' 35.97"
Longitude: 121° 29' 26.65"
T 30S, R 10E, S 23, SE 1/4, NE 1/4
Distance/Bearing/Azimuth: From NE corner S 26°52'58" W, 502.1m, 206°52'58"

RECEIVED
MAR 01 1999
WATER RESOURCES DEPT.
SALEM, OREGON



Source: USGS 7.5 Minute
Quad: Gordon Lake, Yamsay
Mtn.
Vertical Datum: National
Geodetic Vertical Datum of
1929.
Horizontal Datum: 1927 North
American Datum.

KLAMATH ADJUDICATION
CLAIM #637 PAGE # 6

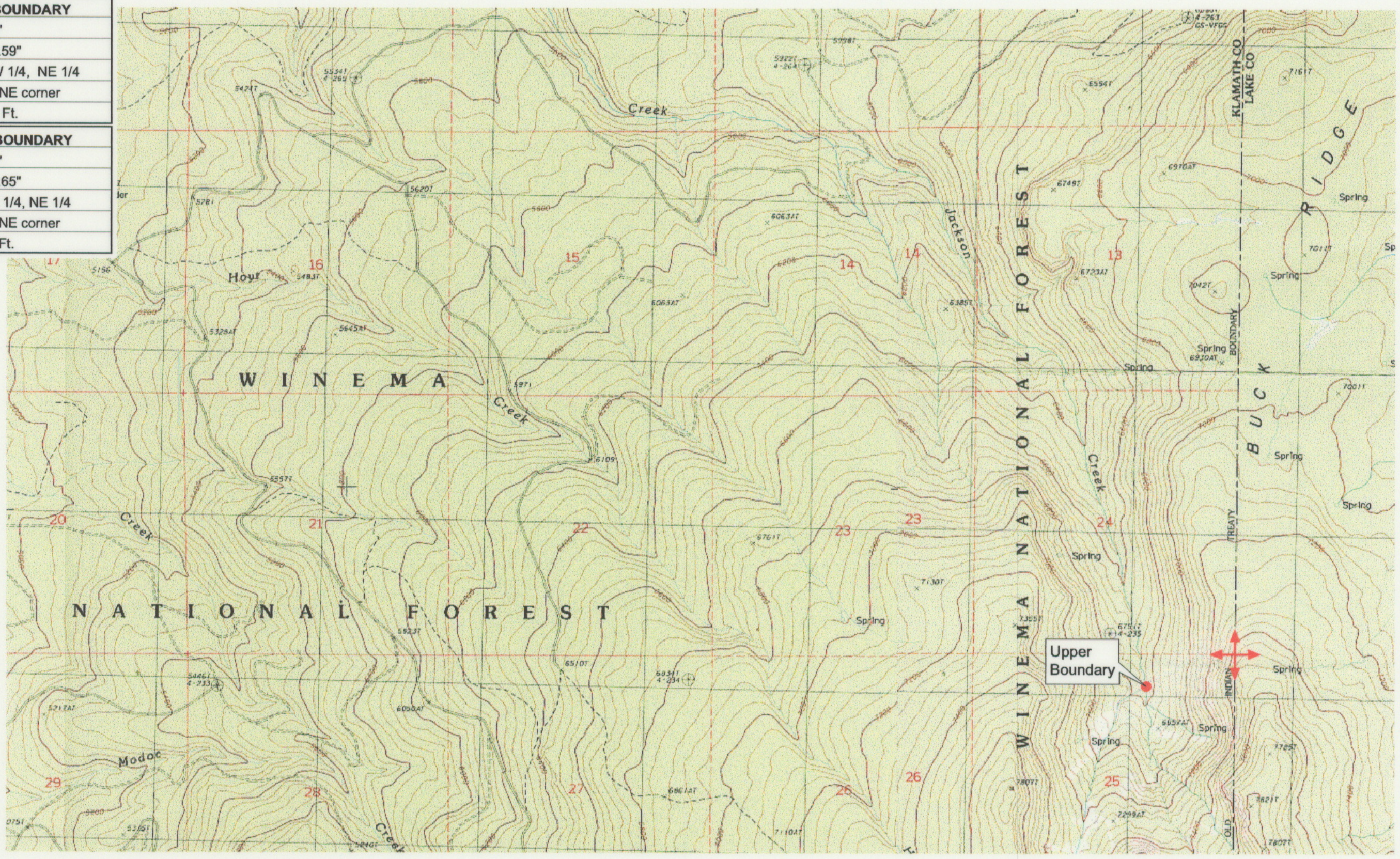
Reach: Jackson Creek.
Plate 2 of 2.

Klamath Basin Water Rights Claim Map
Department of the Interior Bureau of Indian Affairs
Reach Name: **Williamson River #14**
Scale: 1:24,000

f:\ea\graphics\1117gis1.fh5

UPPER REACH BOUNDARY
 Latitude: 42° 56' 50.20"
 Longitude: 121° 21' 22.59"
 T 30S, R 11E, S 25, NW 1/4, NE 1/4
 Bearing/Distance: From NE corner
 S 64° 33' 54" W, 2,019.8 Ft.

LOWER REACH BOUNDARY
 Latitude: 42° 57' 35.97"
 Longitude: 121° 29' 26.65"
 T 30S, R 10E, S 23, SE 1/4, NE 1/4
 Bearing/Distance: From NE corner
 S 26° 52' 58" W, 1,647.4 Ft.



Source: USGS 7.5 Minute
 Quad: Gordon Lake, Yamsay
 Mtn.

Vertical Datum: National
 Geodetic Vertical Datum of
 1929.
 Horizontal Datum: 1927 North
 American Datum.

KLAMATH ADJUDICATION
 CLAIM # **637** PAGE # **017**

Reach: Jackson Creek.
 Plate 1 of 2.

RECEIVED

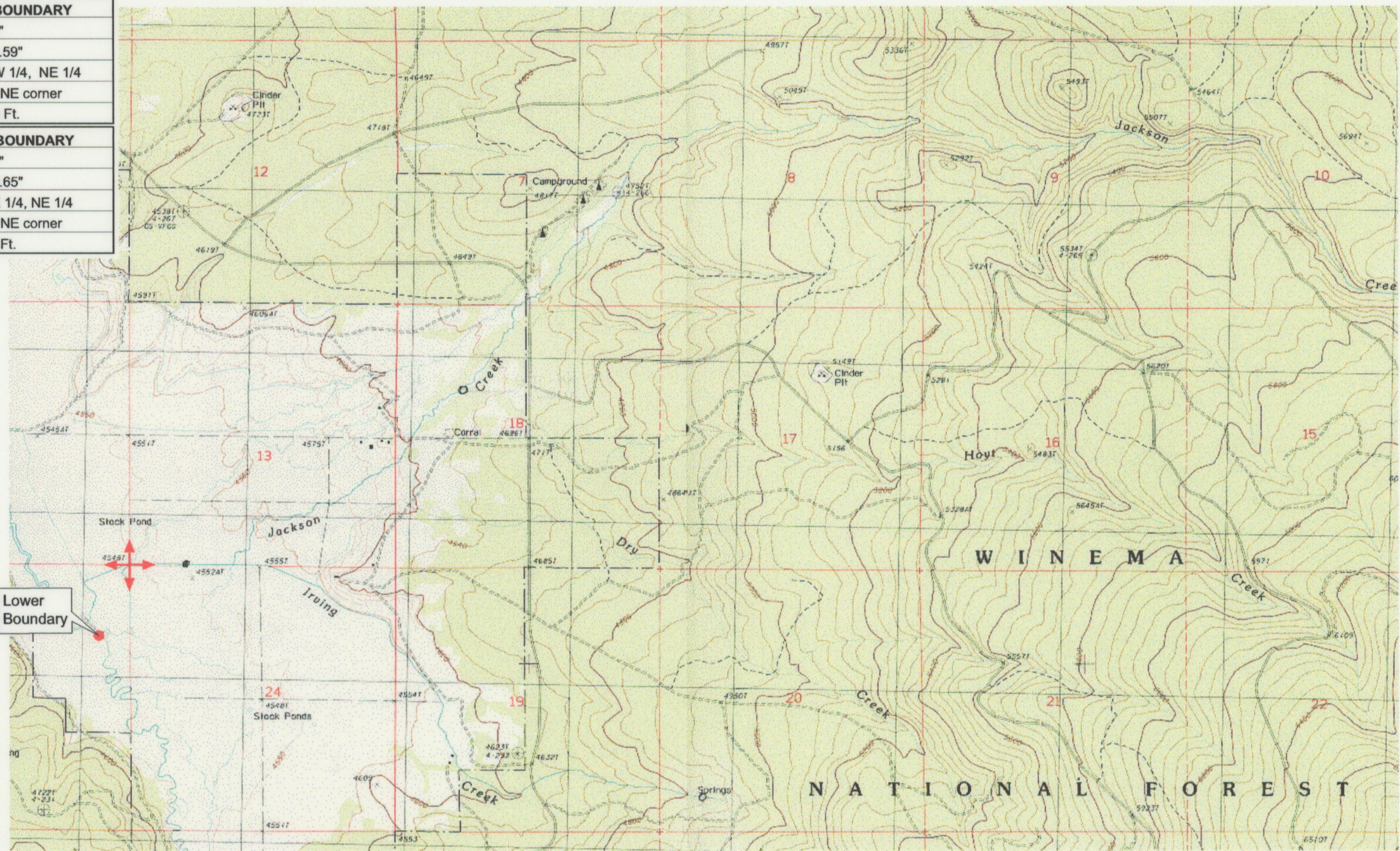
OCT 01 1999

WATER RESOURCES DEPT.
 SALEM, OREGON

Klamath Basin Water Rights Claim #637
 Department of the Interior Bureau of Indian Affairs
 Reach Name: **Williamson River #14 (WM 14)**
 Scale: 1:24,000 (Amended)

\\Lafayette\Graphics\Projects\GIS\BIA\60177.26\Topo\1117gis1.fh8

UPPER REACH BOUNDARY
Latitude: 42° 56' 50.20"
Longitude: 121° 21' 22.59"
T 30S, R 11E, S 25, NW 1/4, NE 1/4
Bearing/Distance: From NE corner S 64° 33' 54" W, 2,019.8 Ft.
LOWER REACH BOUNDARY
Latitude: 42° 57' 35.97"
Longitude: 121° 29' 26.65"
T 30S, R 10E, S 23, SE 1/4, NE 1/4
Bearing/Distance: From NE corner S 26° 52' 58" W, 1,647.4 Ft.



Source: USGS 7.5 Minute Quad: Gordon Lake, Yamsay Mtn.
 Vertical Datum: National Geodetic Vertical Datum of 1929.
 Horizontal Datum: 1927 North American Datum.

KLAMATH ADJUDICATION
637
 CLAIM # PAGE # 018

Reach: Jackson Creek.
 Plate 2 of 2.

RECEIVED
 OCT 01 1999
 WAIH RESOURCES DEPT.
 SALEM, OREGON

Klamath Basin Water Rights Claim #637
 Department of the Interior Bureau of Indian Affairs
 Reach Name: **Williamson River #14 (WM 14)**
 Scale: 1:24,000 (Amended)

\\Lafayette\Graphics\Projects\GIS\BIA\60177.26\Topo\1117gis1.fh8