

<b>UPPER REACH BOUNDARY</b>
Latitude: 42° 57' 3.40"
Longitude: 121° 26' 43.16"
T 30S, R 11E, S 20, SW 1/4, SW 1/4
Distance/Bearing/Azimuth: From SW corner 64° 5' 36" E, 313.0m, 64° 5' 36"
<b>LOWER REACH BOUNDARY</b>
Latitude: 42° 57' 48.82"
Longitude: 121° 28' 45.76"
T 30S, R 10E, S 13, SE 1/4, SW 1/4
Distance/Bearing/Azimuth: From SW corner N 87° 6' 46" E, 667.9m, 87° 6' 46"

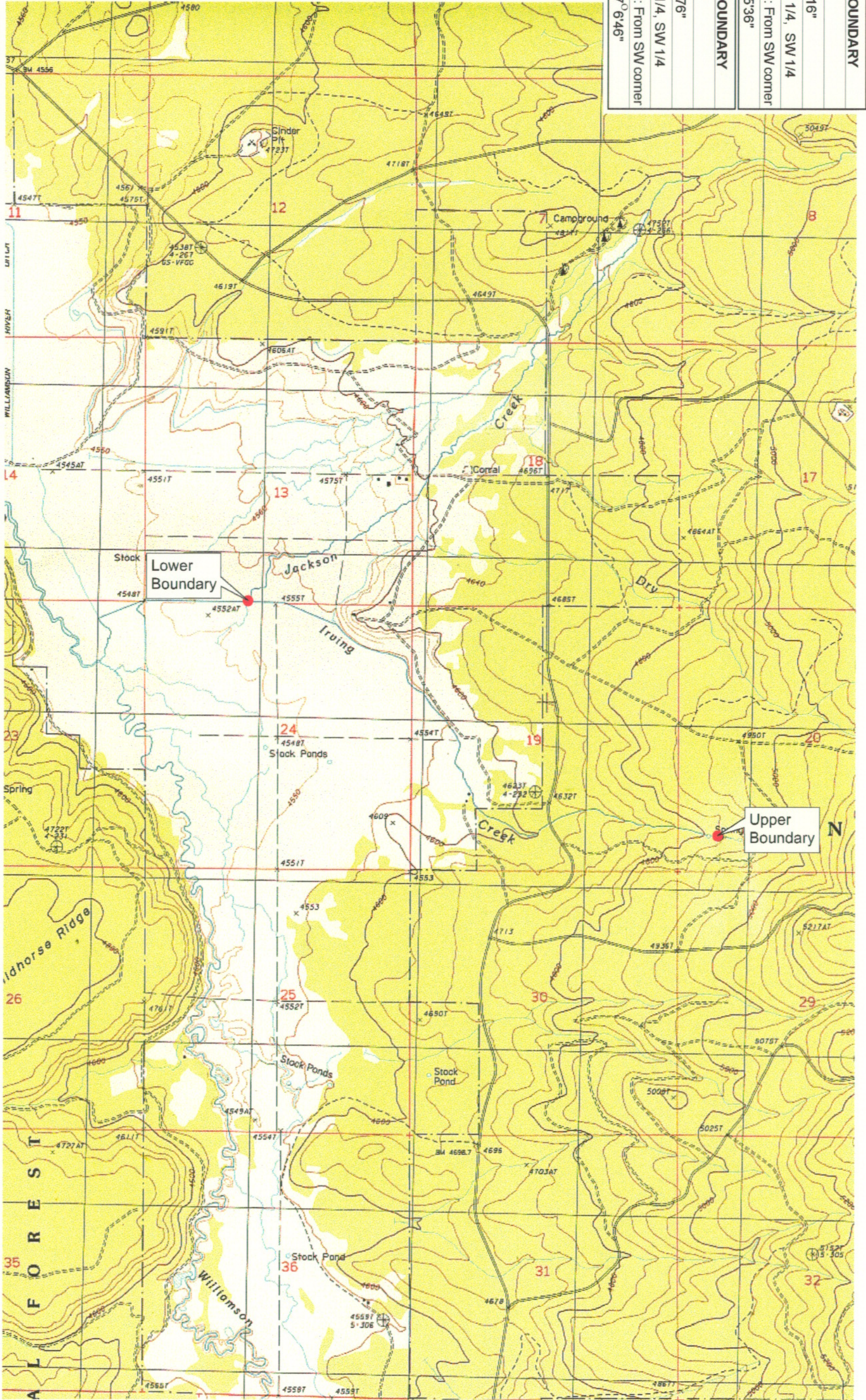
**RECEIVED**

MAR 01 1999

WATER RESOURCES DEPT  
SALEM, OREGON



Source: USGS 7.5 Minute  
Quad: Gordon Lake.  
Vertical Datum: National  
Geodetic Vertical Datum of  
1929.  
Horizontal Datum: 1927 North  
American Datum.



**KLAMATH ADJUDICATION**  
**CLAIM # 638** PAGE # 4

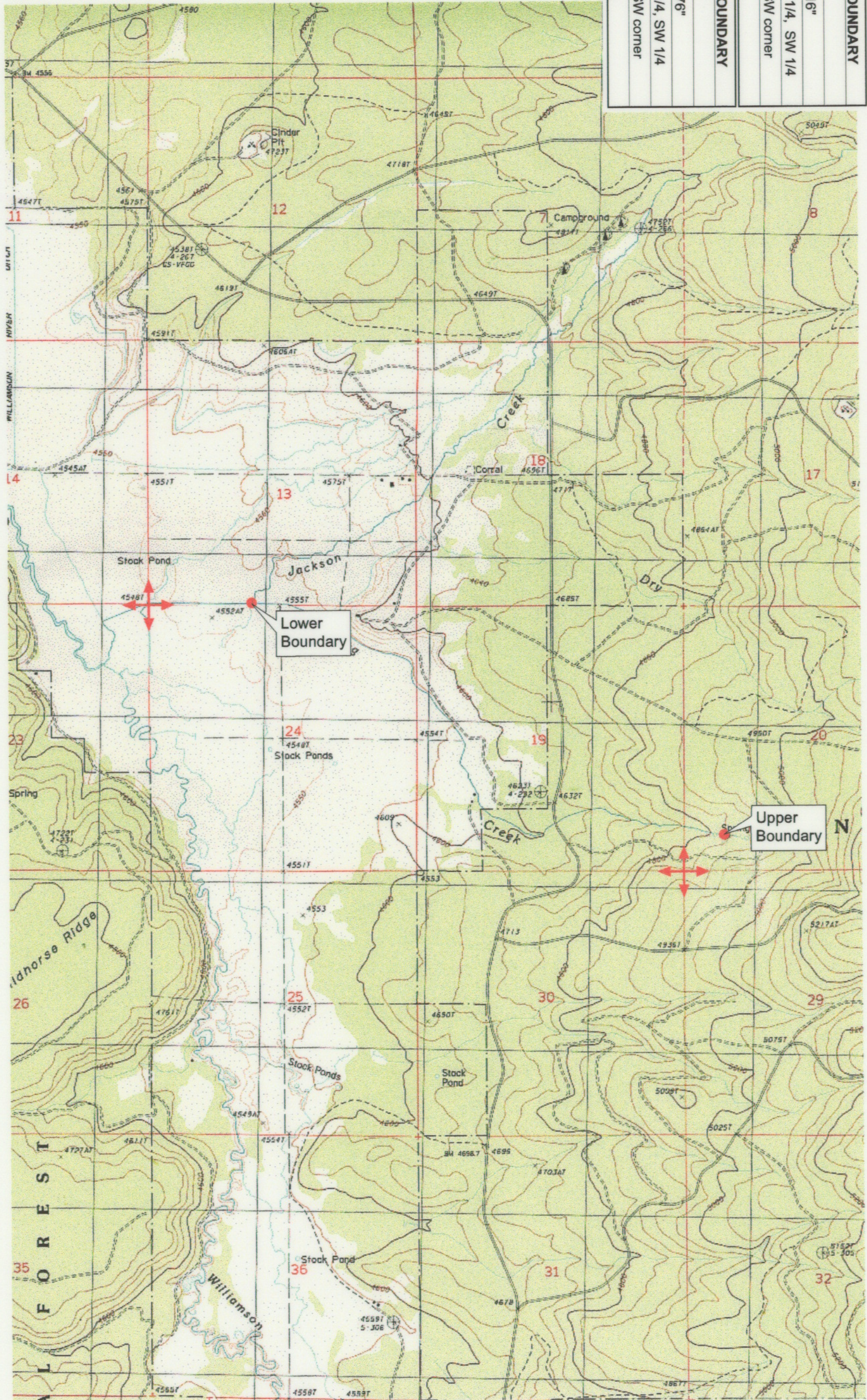
Reach: Irving Creek.  
Plate 1 of 1.

Klamath Basin Water Rights Claim Map  
Department of the Interior Bureau of Indian Affairs  
Reach Name: Williamson River #15  
Scale: 1:24,000

<b>UPPER REACH BOUNDARY</b>
Latitude: 42° 57' 3.40"
Longitude: 121° 26' 43.16"
T 30S, R 11E, S 20, SW 1/4, SW 1/4
Bearing/Distance: From SW corner 64° 5' 36" E, 1,027.1 Ft.
<b>LOWER REACH BOUNDARY</b>
Latitude: 42° 57' 48.82"
Longitude: 121° 28' 45.76"
T 30S, R 10E, S 13, SE 1/4, SW 1/4
Bearing/Distance: From SW corner N 87° 6' 46" E, 2,191.5 Ft.



Source: USGS 7.5 Minute  
 Quad: Gordon Lake.  
 Vertical Datum: National  
 Geodetic Vertical Datum of  
 1929.  
 Horizontal Datum: 1927 North  
 American Datum.



**KLAMATH ADJUDICATION**  
**CLAIM # 638** PAGE # **015**

Reach: Irving Creek.  
 Plate 1 of 1.

**RECEIVED**  
 OCT 01 1999  
 WATER RESOURCES DEPT.  
 SALEM, OREGON

**Klamath Basin Water Rights Claim #638**  
 Department of the Interior Bureau of Indian Affairs  
 Reach Name: **Williamson River #15 (WM15)**  
 Scale: 1:24,000  
 (Amended)

\\slayette\Graphics\Projects\GIS\BIA\60177\_26\Topo\1117g1.frb