

<b>UPPER REACH BOUNDARY</b>
Latitude: 42° 54' 51.79"
Longitude: 121° 21' 23.08"
T 31S, R 11E, S 1, SW 1/4, NE 1/4
Distance/Bearing/Azimuth: From NE corner S 43° 57' 40" W, 790.8m, 223° 57' 40"
<b>LOWER REACH BOUNDARY</b>
Latitude: 42° 50' 42.76"
Longitude: 121° 27' 42.03"
T 31S, R 11E, S 31, NW 1/4, NW 1/4
Distance/Bearing/Azimuth: From NW corner S 68° 26' 54" E, 475.0m, 111° 33' 6"

**RECEIVED**

MAR 01 1999

WATER RESOURCES DEPT.  
SALEM, OREGON



Source: USGS 7.5 Minute Quad:  
The Bull Pasture, Yamsay Mtn.,  
Gordon Lake, Harneyton Butte.  
Vertical Datum: National  
Geodetic Vertical Datum of 1929  
Horizontal Datum: 1927 North  
American Datum.



**KLAMATH ADJUDICATION**  
**CLAIM 639** PAGE #

6

Reach: Deep Creek.  
Plate 1 of 3.

Klamath Basin Water Rights Claim Map  
Department of the Interior Bureau of Indian Affairs  
Reach Name: Williamson River #16  
Scale: 1:24,000

<b>UPPER REACH BOUNDARY</b>
Latitude: 42° 54' 51.79"
Longitude: 121° 21' 23.08"
T 31S, R 11E, S 1, SW 1/4, NE 1/4
Distance/Bearing/Azimuth: From NE corner S 43° 57' 40" W, 790.8m, 223° 57' 40"
<b>LOWER REACH BOUNDARY</b>
Latitude: 42° 50' 42.76"
Longitude: 121° 27' 42.03"
T 31S, R 11E, S 31, NW 1/4, NW 1/4
Distance/Bearing/Azimuth: From NW corner S 68° 26' 54" E, 475.0m, 111° 33' 6"

**RECEIVED**

MAR 01 1999

WATER RESOURCES DEPT.  
SALEM, OREGON



Source: USGS 7.5 Minute  
Quad: The Bull Pasture,  
Yamsay Mtn., Gordon Lake,  
Hemelton Butte.  
Vertical Datum: National  
Geodetic Vertical Datum of  
1929.  
Horizontal Datum: 1927 North  
American Datum.



**KLAMATH ADJUDICATION**  
**CLAIM 639** PAGE # **7**

Reach: Deep Creek  
Plate 2 of 3.

**Klamath Basin Water Rights Claim Map**  
Department of the Interior Bureau of Indian Affairs  
Reach Name: **Williamson River #16**  
Scale: 1:24,000

**UPPER REACH BOUNDARY**

Latitude: 42° 54' 51.79"

Longitude: 121° 21' 23.08"

T 31S, R 11E, S 1, SW 1/4, NE 1/4

Distance/Bearing/Azimuth: From NE corner  
S 43° 57' 40" W, 790.8m, 223° 57' 40"

**LOWER REACH BOUNDARY**

Latitude: 42° 50' 42.76"

Longitude: 121° 27' 42.03"

T 31S, R 11E, S 31, NW 1/4, NW 1/4

Distance/Bearing/Azimuth: From NW corner  
S 68° 26' 54" E, 475.0m, 111° 33' 6"

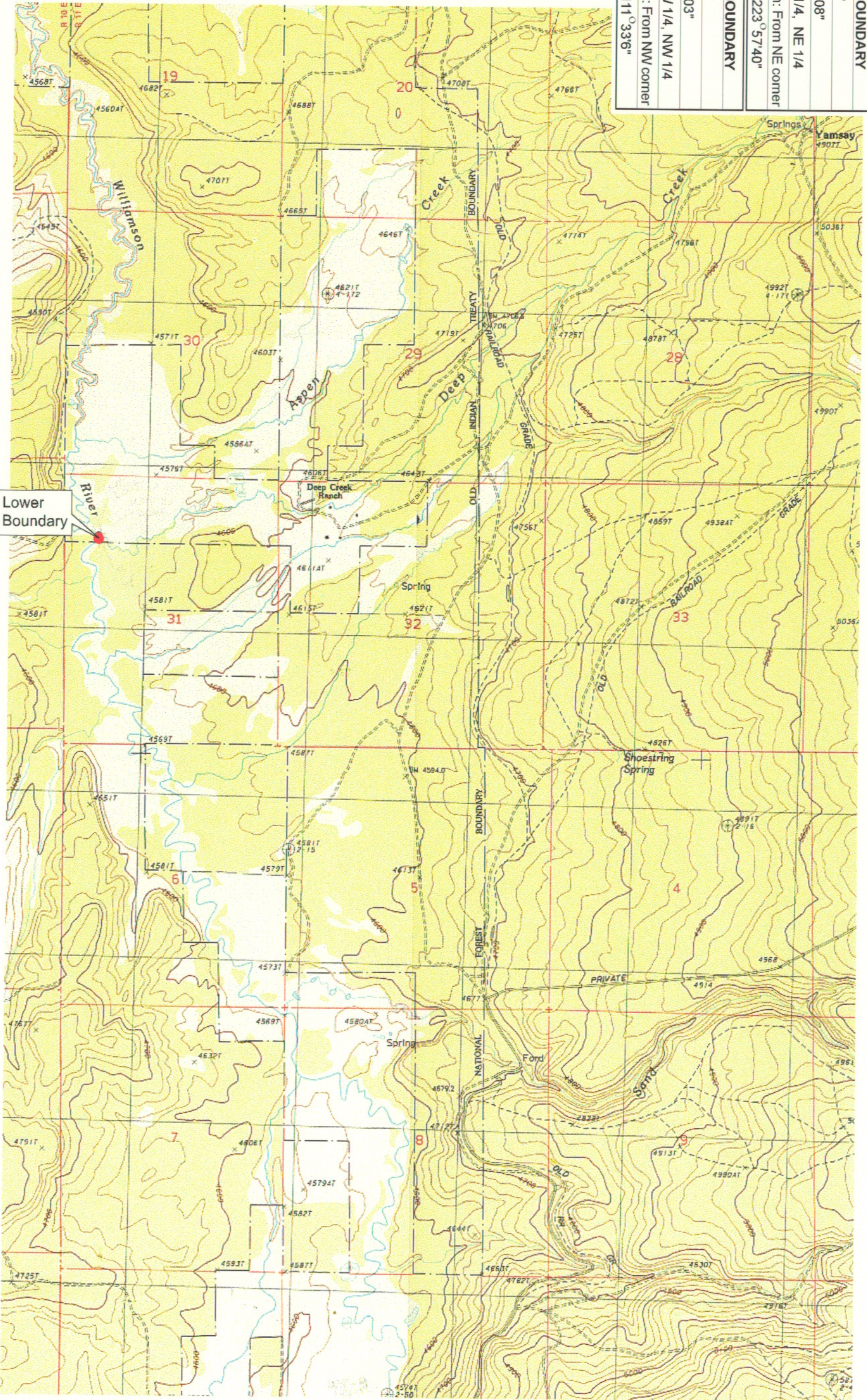
**RECEIVED**

MAR 01 1999

WATER RESOURCES DEPT.  
SALEM, OREGON



Source: USGS 7.5 Minute  
Quad: The Bull Pasture,  
Yamsay Mtn., Gordon Lake  
Hamelton Butte.  
Vertical Datum: National  
Geodetic Vertical Datum of  
1929.  
Horizontal Datum: 1927 North  
American Datum.



**KLAMATH ADJUDICATION**

CLAIM # 639 PAGE #

8

Reach: Deep Creek.  
Plate 3 of 3.

Klamath Basin Water Rights Claim Map

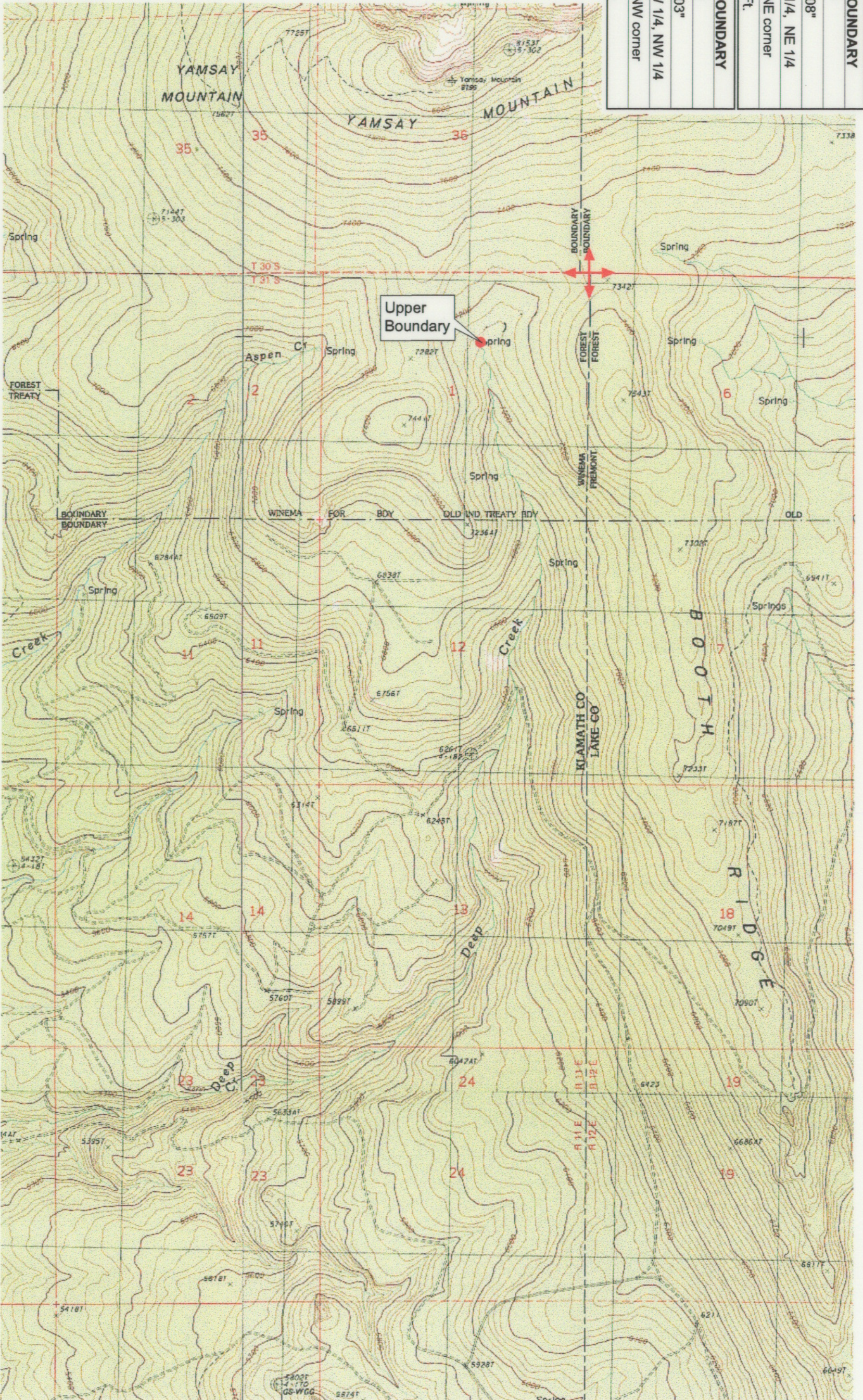
Department of the Interior  
Bureau of Indian Affairs  
Reach Name: Williamson River #16

Scale: 1:24,000

<b>UPPER REACH BOUNDARY</b>
Latitude: 42° 54' 51.79"
Longitude: 121° 21' 23.08"
T 31 S, R 11 E, S 1, SW 1/4, NE 1/4
Bearing/Distance: From NE corner S 43° 57' 40" W, 2,594.7 Ft.
<b>LOWER REACH BOUNDARY</b>
Latitude: 42° 50' 42.76"
Longitude: 121° 27' 42.03"
T 31 S, R 11 E, S 31, NW 1/4, NW 1/4
Bearing/Distance: From NW corner S 21° 33' 6" E, 1,558.4 Ft.



Source: USGS 7.5 Minute Quad:  
The Bull Pasture, Yamsay Mtn.,  
Gordon Lake, Harneilton Butte.  
Vertical Datum: National  
Geodetic Vertical Datum of 1929  
Horizontal Datum: 1927 North  
American Datum.



**KLAMATH ADJUDICATION**  
CLAIM # **639** PAGE # **019**

Reach: Deep Creek.  
Plate 1 of 3.

**RECEIVED**

OCT 01 1999

WATER RESOURCES DEPT.  
SALEM, OREGON

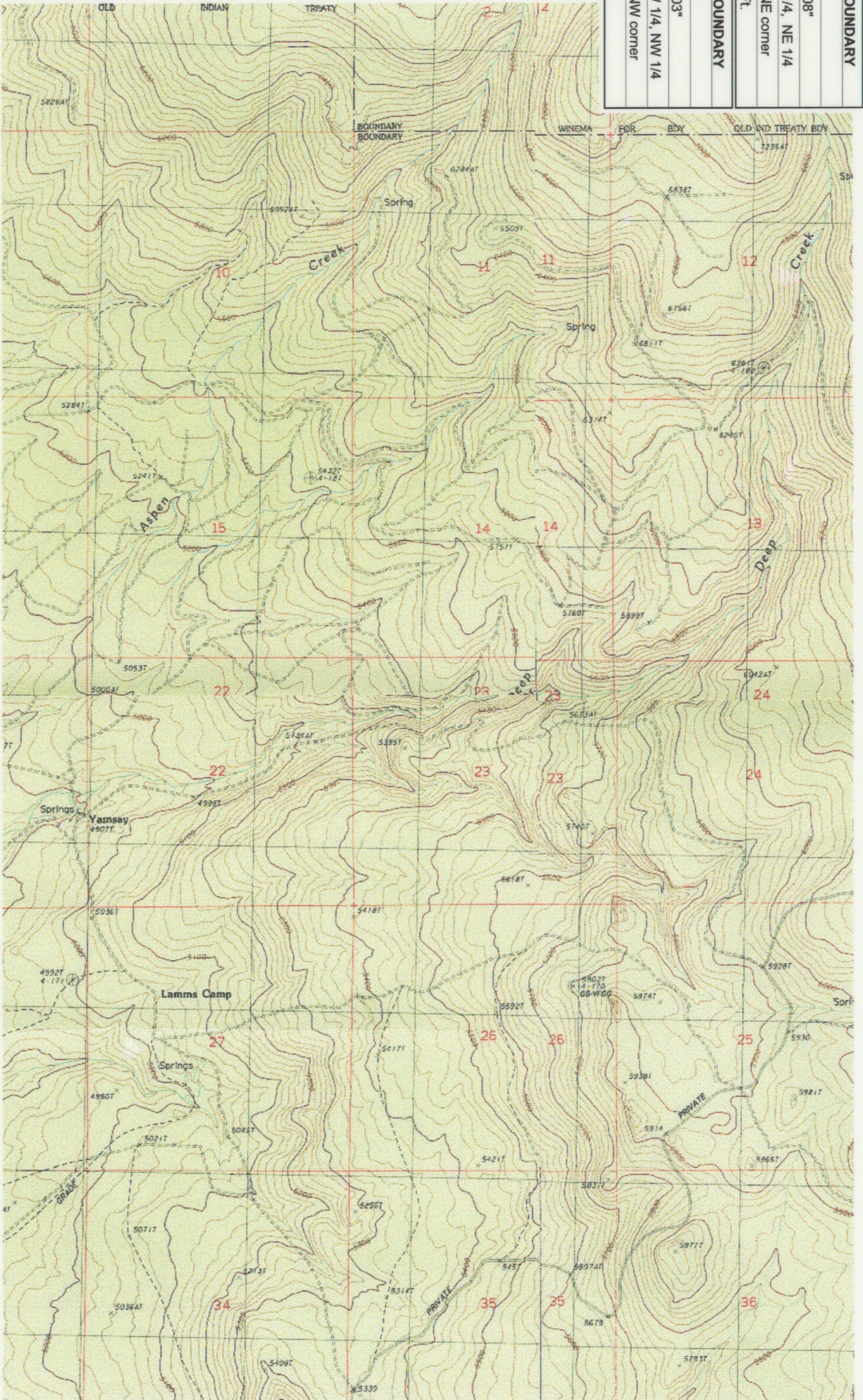
Klamath Basin Water Rights Claim #639  
Department of the Interior Bureau of Indian Affairs  
Reach Name: Williamson River #16 (WM 16)  
Scale: 1:24,000  
(Amended)

\\lafayette\Graphics\Projects\GIS\BIA\60177\_26\Topo\11179\1.frb

<b>UPPER REACH BOUNDARY</b>
Latitude: 42° 54' 51.79"
Longitude: 121° 21' 23.08"
T 31S, R 11E, S 1, SW 1/4, NE 1/4
Bearing/Distance: From NE corner S 43° 57' 40" W, 2,594.7 Ft.
<b>LOWER REACH BOUNDARY</b>
Latitude: 42° 50' 42.76"
Longitude: 121° 27' 42.03"
T 31S, R 11E, S 31, NW 1/4, NW 1/4
Bearing/Distance: From NW corner S 21° 33' 6" E, 1,558.4 Ft.



Source: USGS 7.5 Minute  
 Quad: The Bull Pasture,  
 Yamsay Mtn., Gordon Lake,  
 Harney Co. Butte.  
 Vertical Datum: National  
 Geodetic Vertical Datum of  
 1929.  
 Horizontal Datum: 1927 North  
 American Datum.



**KLAMATH ADJUDICATION**  
 CLAIM # **639** PAGE # **020**

Reach: Deep Creek.  
 Plate 2 of 3.

**RECEIVED**

OCT 01 1999

WATER RESOURCES DEPT.  
 SALEM, OREGON

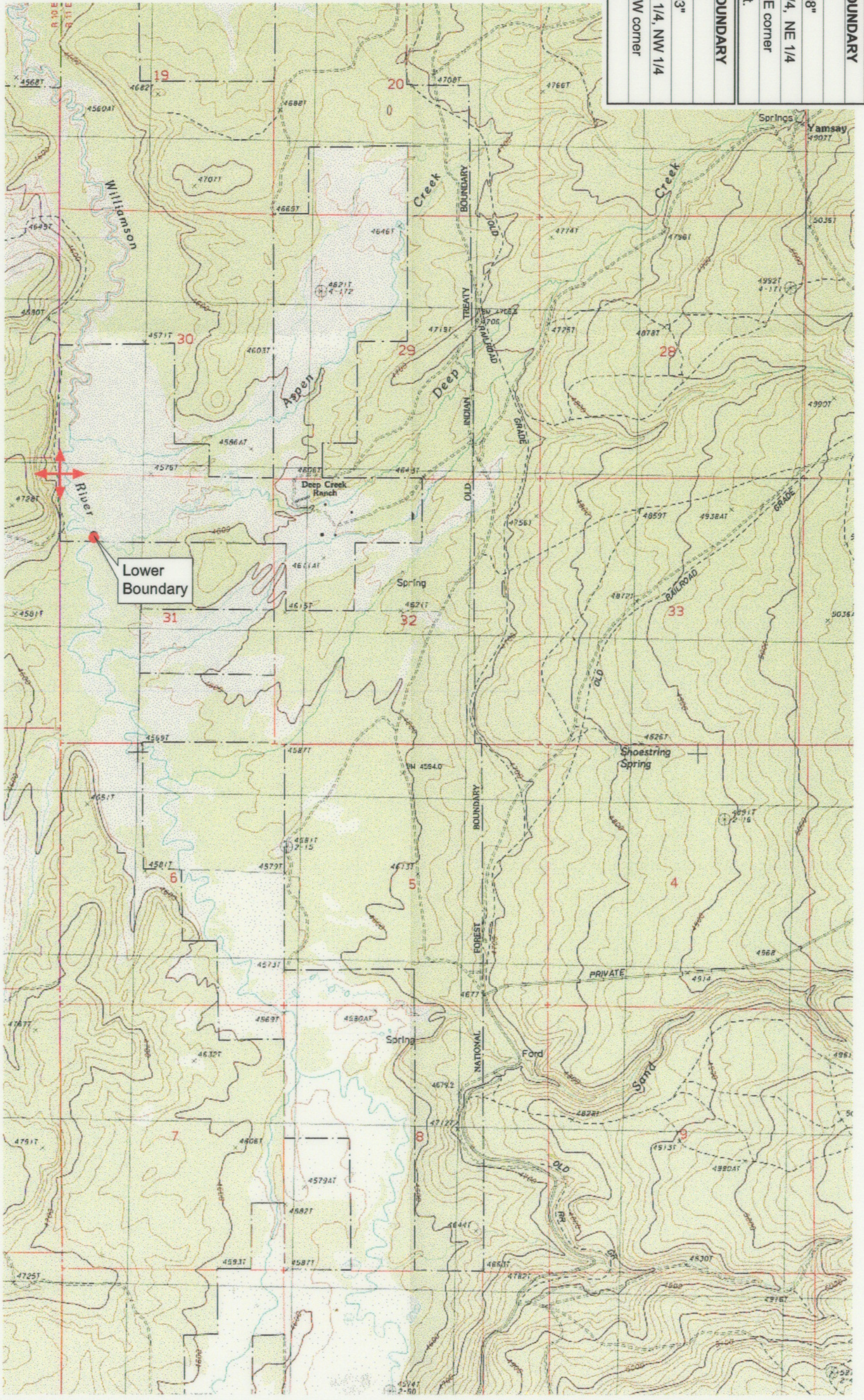
Klamath Basin Water Rights Claim #639  
 Department of the Interior Bureau of Indian Affairs  
 Reach Name: Williamson River #16 (WM 16)  
 Scale: 1:24,000  
 (Amended)

\\lafayette\Graphics\Projects\GIS\BIA\60177\_26\Topo\11179a1.mxd

<b>UPPER REACH BOUNDARY</b>
Latitude: 42° 54' 51.79"
Longitude: 121° 21' 23.08"
T 31S, R 11E, S 1, SW 1/4, NE 1/4
Bearing/Distance: From NE corner S 43° 57' 40" W, 2,594.7 Ft.
<b>LOWER REACH BOUNDARY</b>
Latitude: 42° 50' 42.76"
Longitude: 121° 27' 42.03"
T 31S, R 11E, S 31, NW 1/4, NW 1/4
Bearing/Distance: From NW corner S 21° 33' 6" E, 1,558.4 Ft.



Source: USGS 7.5 Minute  
 Quad: The Bull Pasture,  
 Yamsay Mtn., Gordon Lake  
 Hamelton Butte.  
 Vertical Datum: National  
 Geodetic Vertical Datum of  
 1929.  
 Horizontal Datum: 1927 North  
 American Datum.



**KLAMATH ADJUDICATION**  
**CLAIM # 639**  
 PAGE # 021

Reach: Deep Creek.  
 Plate 3 of 3.

**RECEIVED**

OCT 01 1999  
 WATER RESOURCES DEPT.  
 SALEM, OREGON

Klamath Basin Water Rights Claim #639  
 Department of the Interior Bureau of Indian Affairs  
 Reach Name: Williamson River #16 (WM 16)  
 Scale: 1:24,000  
 (Amended)  
 \\lfrayette\Graphics\Projects\GIS\BIA\60177\_261\Topo\117\gis1.fh8