

<b>UPPER REACH BOUNDARY</b>
Latitude: 42° 40' 1.77"
Longitude: 121° 53' 5.32"
T 33S, R 7E, S 33, SW 1/4, NE 1/4
Distance/Bearing/Azimuth: From NE corner S 34° 54' 17" W, 962.6m, 214° 54' 17"
<b>LOWER REACH BOUNDARY</b>
Latitude: 42° 38' 27.81"
Longitude: 121° 52' 33.43"
T 34S, R 7E, S 9, SE 1/4, NE 1/4
Distance/Bearing/Azimuth: From NW corner S 88° 46" E, 590.6m, 91° 55' 54"

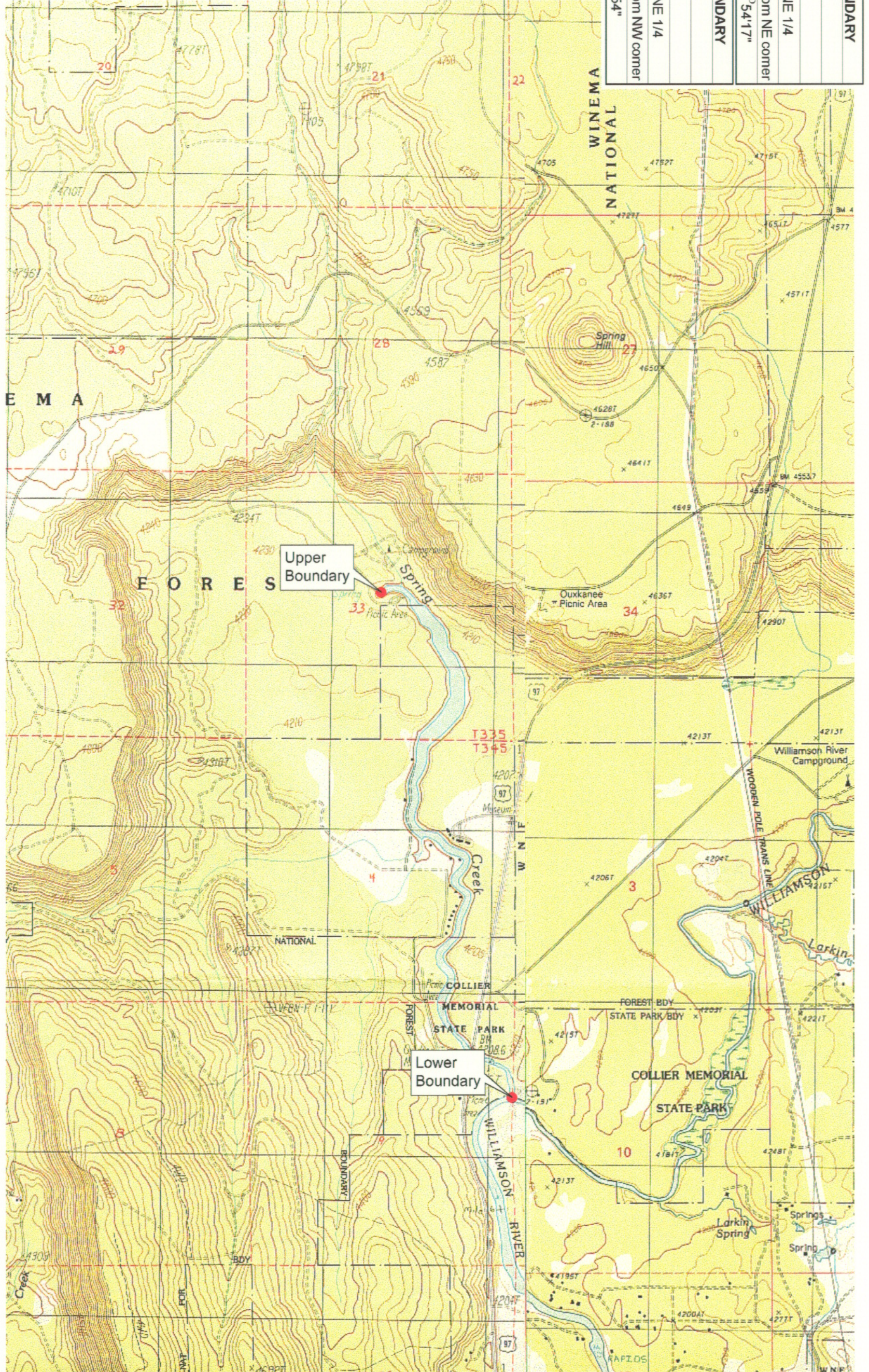
**RECEIVED**

MAR 01 1999

WATER RESOURCES DEPT.  
SALEM, OREGON



Source: USGS 7.5 Minute Quad:  
Fort Klamath, Solomon Butte.  
Vertical Datum: National  
Geodetic Vertical Datum of 1929.  
Horizontal Datum: 1927 North  
American Datum.



**KLAMATH ADJUDICATION**  
**CLAIM # 640 PAGE # 4**

Reach: Spring Creek.  
Plate 1 of 1.

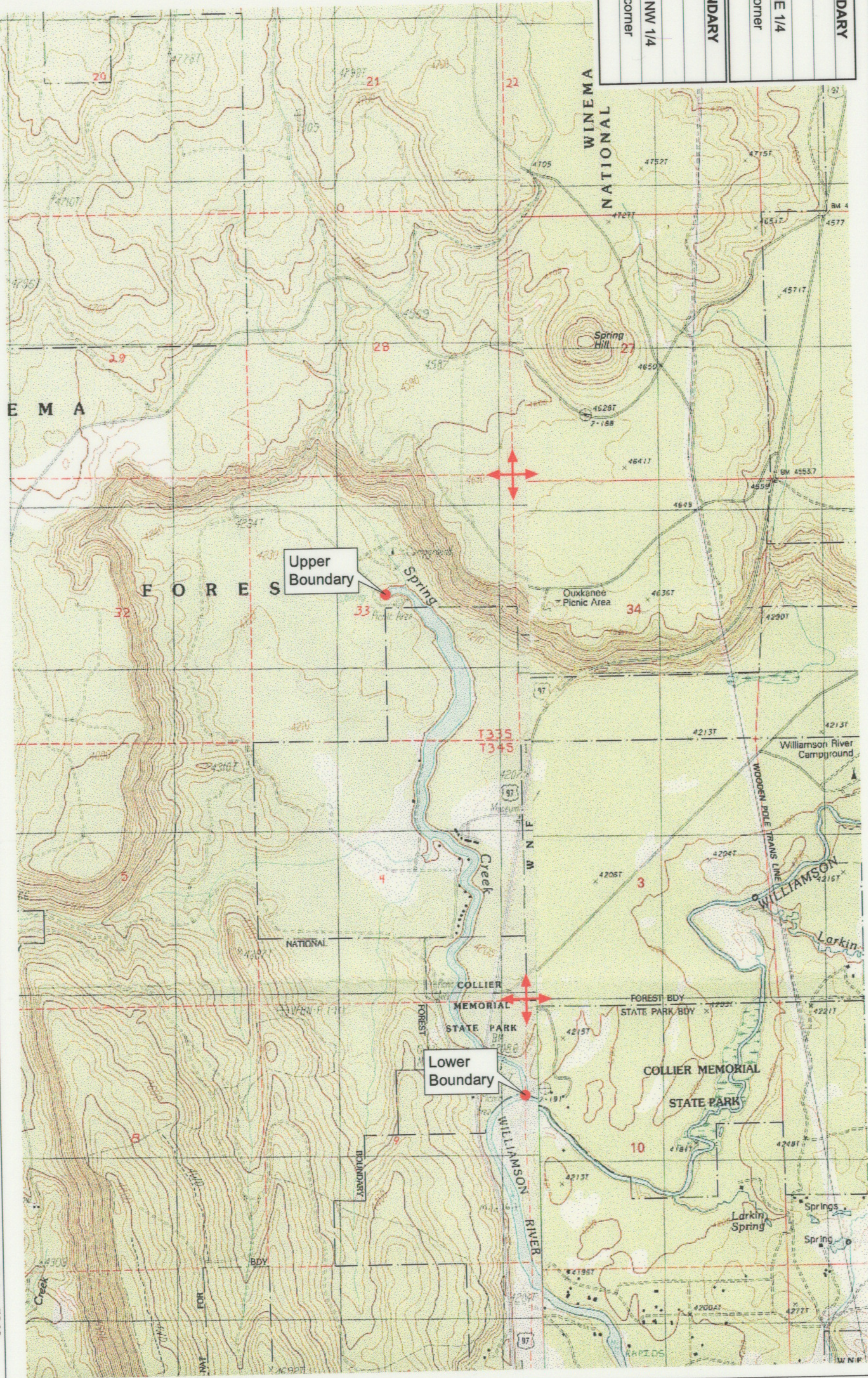
Klamath Basin Water Rights Claim Map  
Department of the Interior Bureau of Indian Affairs  
Reach Name: Williamson River #17  
Scale: 1:24,000



<b>UPPER REACH BOUNDARY</b>
Latitude: 42° 40' 1.77"
Longitude: 121° 53' 5.32"
T 33S, R 7E, S 33, SW 1/4, NE 1/4
Bearing/Distance: From NE corner S 34° 54' 17" W, 3,158.2 FL.
<b>LOWER REACH BOUNDARY</b>
Latitude: 42° 38' 27.81"
Longitude: 121° 52' 33.43"
T 34S, R 7E, S 10, SW 1/4, NW 1/4
Bearing/Distance: From NW corner S 1° 55' 54" E, 1,937.7 FL.



Source: USGS 7.5 Minute Quad:  
Fort Klamath, Solomon Butte.  
Vertical Datum: National  
Geodetic Vertical Datum of 1929  
Horizontal Datum: 1927 North  
American Datum.



**KLAMATH ADJUDICATION**  
**CLAIM # 640** PAGE # **015**

Reach: Spring Creek.  
Plate 1 of 1.

**RECEIVED**

OCT 01 1999

WATER RESOURCES DEPT  
SALEM, OREGON

Klamath Basin Water Rights Claim #640  
Department of the Interior Bureau of Indian Affairs  
Reach Name: **Williamson River #17 (WM 17)**  
Scale: 1:24,000  
(Amended)  
\\slafayette\Graphics\Projects\GIS\BIA\60177\_26\Topo\1117.gis1.mxd