

UPPER REACH BOUNDARY	
Latitude:	42° 33' 47.28"
Longitude:	121° 51' 37.92"
T 35S, R 7E, S 3, NE 1/4, SE 1/4	
Distance/Bearing/Azimuth:	From SE corner N 49° 29' 6" W, 544.4m, 310° 30' 34"
LOWER REACH BOUNDARY	
Latitude:	42° 34' 19.65"
Longitude:	121° 52' 20.27"
T 35S, R 7E, S 3, NW 1/4, NW 1/4	
Distance/Bearing/Azimuth:	From NW corner S 28° 39' 24" E, 303.8m, 151° 20' 36"

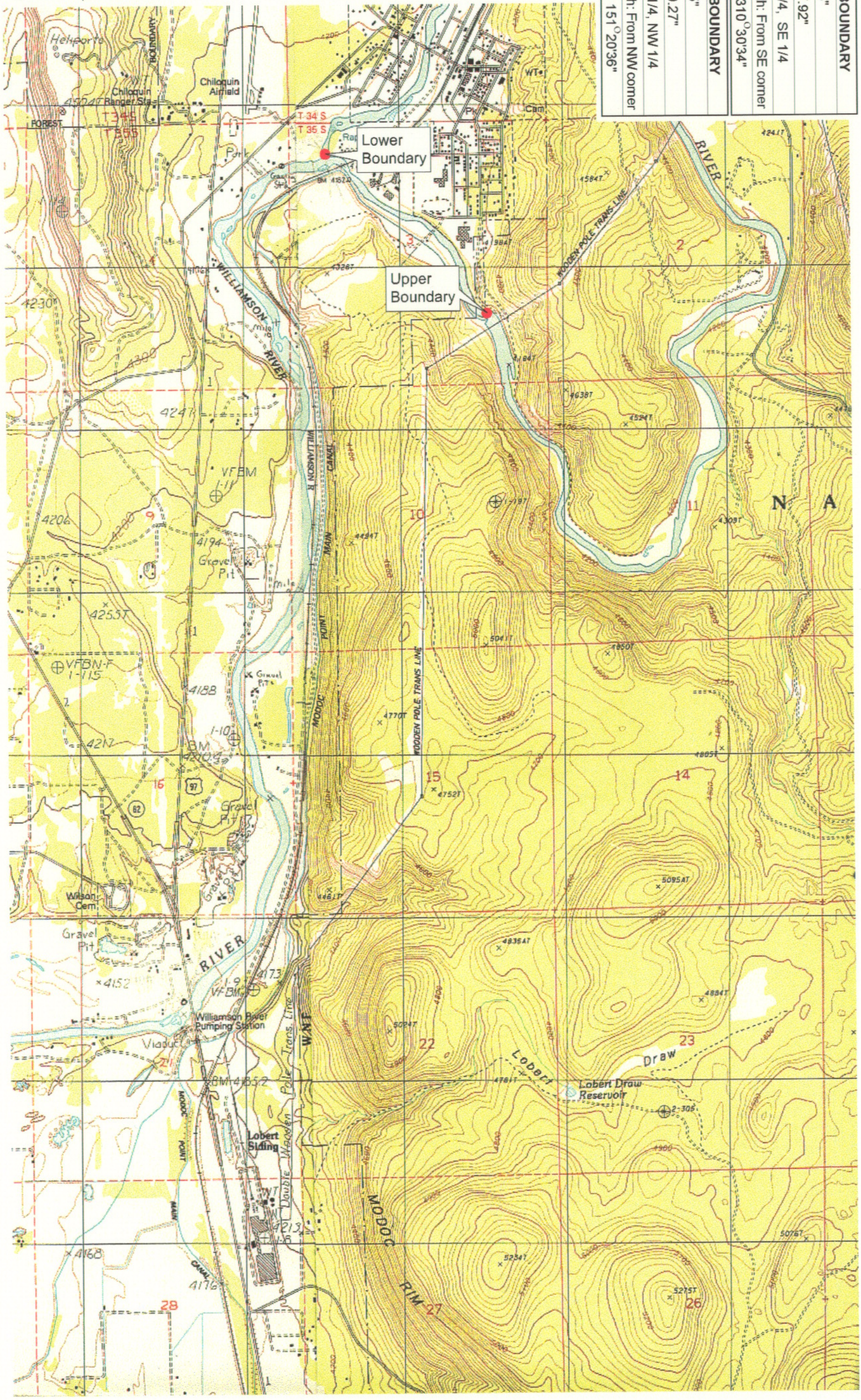
RECEIVED

MAR 01 1999

WATER RESOURCES DEPT.
SALEM, OREGON



Source: USGS 7.5 Minute
Quad: Chiloquin, Agency Lake
Vertical Datum: National
Geodetic Vertical Datum of
1929.
Horizontal Datum: 1927 North
American Datum.



KLAMATH ADJUDICATION
CLAIM # 641 PAGE # **4**

Reach boundaries: Chiloquin Dam to Williamson River.
Plate 1 of 1.

Klamath Basin Water Rights Claim Map
Department of the Interior Bureau of Indian Affairs
Reach Name: **Sprague River #1**
Scale: 1:24,000
F:\60177\26\master\graphics\11179\13.thx

UPPER REACH BOUNDARY
Latitude: 42° 33' 47.28"
Longitude: 121° 51' 37.92"
T 35S, R 7E, S 3, NE 1/4, SE 1/4
Bearing/Distance: From SE corner N 40° 30' 34" W, 1,786.3 Ft.
LOWER REACH BOUNDARY
Latitude: 42° 34' 19.65"
Longitude: 121° 52' 20.27"
T 35S, R 7E, S 3, NW 1/4, NW 1/4
Bearing/Distance: From NW corner S 61° 20' 36" E, 996.8 Ft.



Source: USGS 7.5 Minute
 Quad: Chiloquin, Agency Lake.
 Vertical Datum: National Geodetic Vertical Datum of 1929.
 Horizontal Datum: 1927 North American Datum.



KLAMATH ADJUDICATION
 CLAIM # **641** PAGE # **015**

Reach boundaries: Chiloquin Dam to Williamson River.
 Plate 1 of 1.

RECEIVED

OCT 01 1999

WATER RESOURCES DEPT.
 SALEM, OREGON

Klamath Basin Water Rights Claim #641
 Department of the Interior Bureau of Indian Affairs
 Reach Name: Sprague River #1 (SP 1)
 Scale: 1:24,000
 (Amended)

\\fs1\at\Graphics\Projects\GIS\BIA\60177_26\Topo\1117gls3.frb