

UPPER REACH BOUNDARY	
Latitude:	42° 36' 25.64"
Longitude:	121° 48' 20.08"
T 34S, R 8E, S 19, NW 1/4, SE 1/4	
Distance/Bearing/Azimuth: From SE corner*	N 38° 13' 17" W, 738.3m, 321° 46' 43"
LOWER REACH BOUNDARY	
Latitude:	42° 33' 47.28"
Longitude:	121° 51' 37.92"
T 35S, R 7E, S 3, NE 1/4, SE 1/4	
Distance/Bearing/Azimuth: From SE corner	N 49° 29' 26" W, 544.4m, 310° 30' 34"

* See plate 3 of 3 of Sprague River #3 for corner

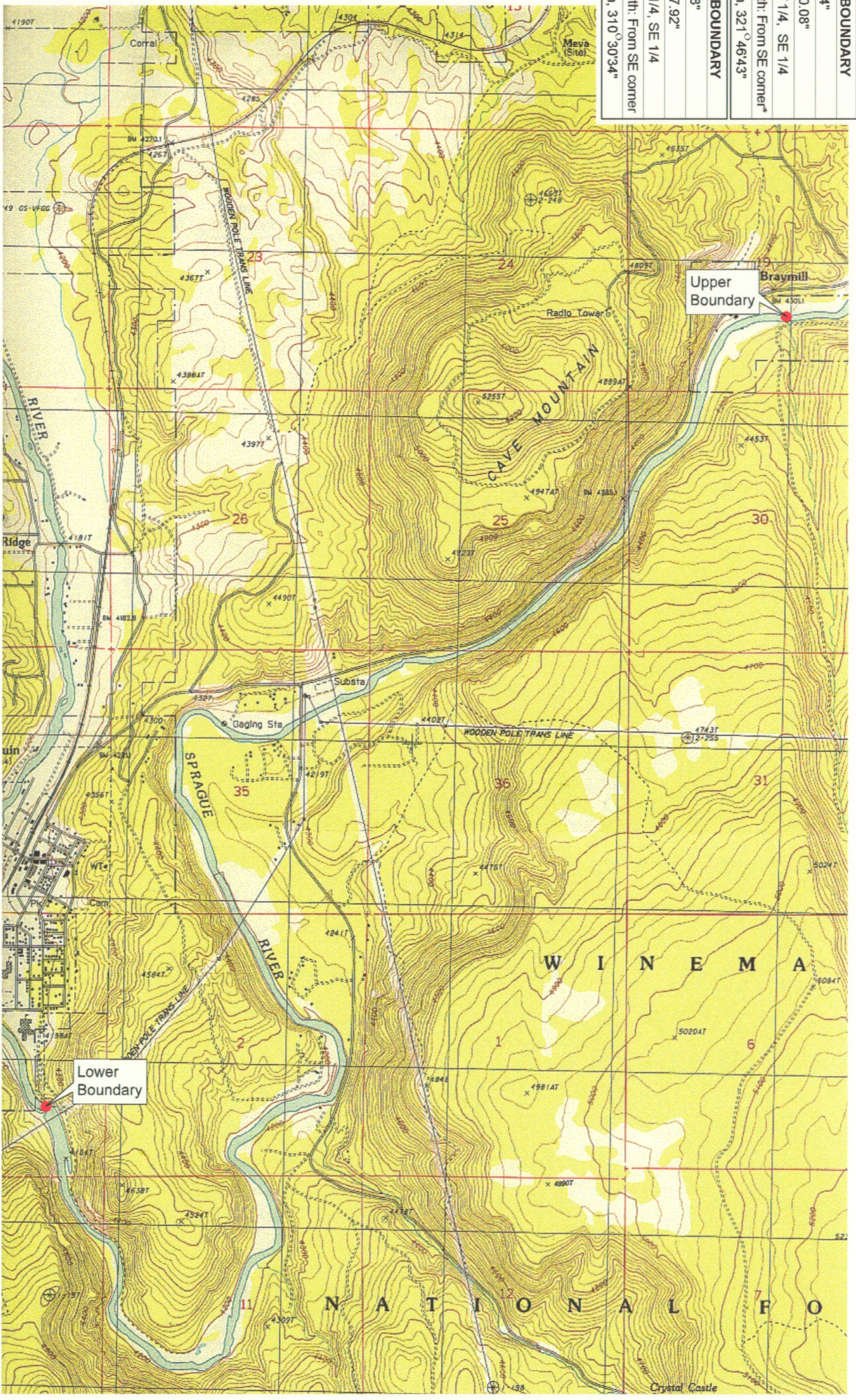
RECEIVED

MAR 01 1999

WATER RESOURCES DEPT.
SALEM, OREGON



Source: USGS 7.5 Minute
Quad: Chiloquin.
Vertical Datum: National Geodetic Vertical Datum of 1929.
Horizontal Datum: 1927 North American Datum.

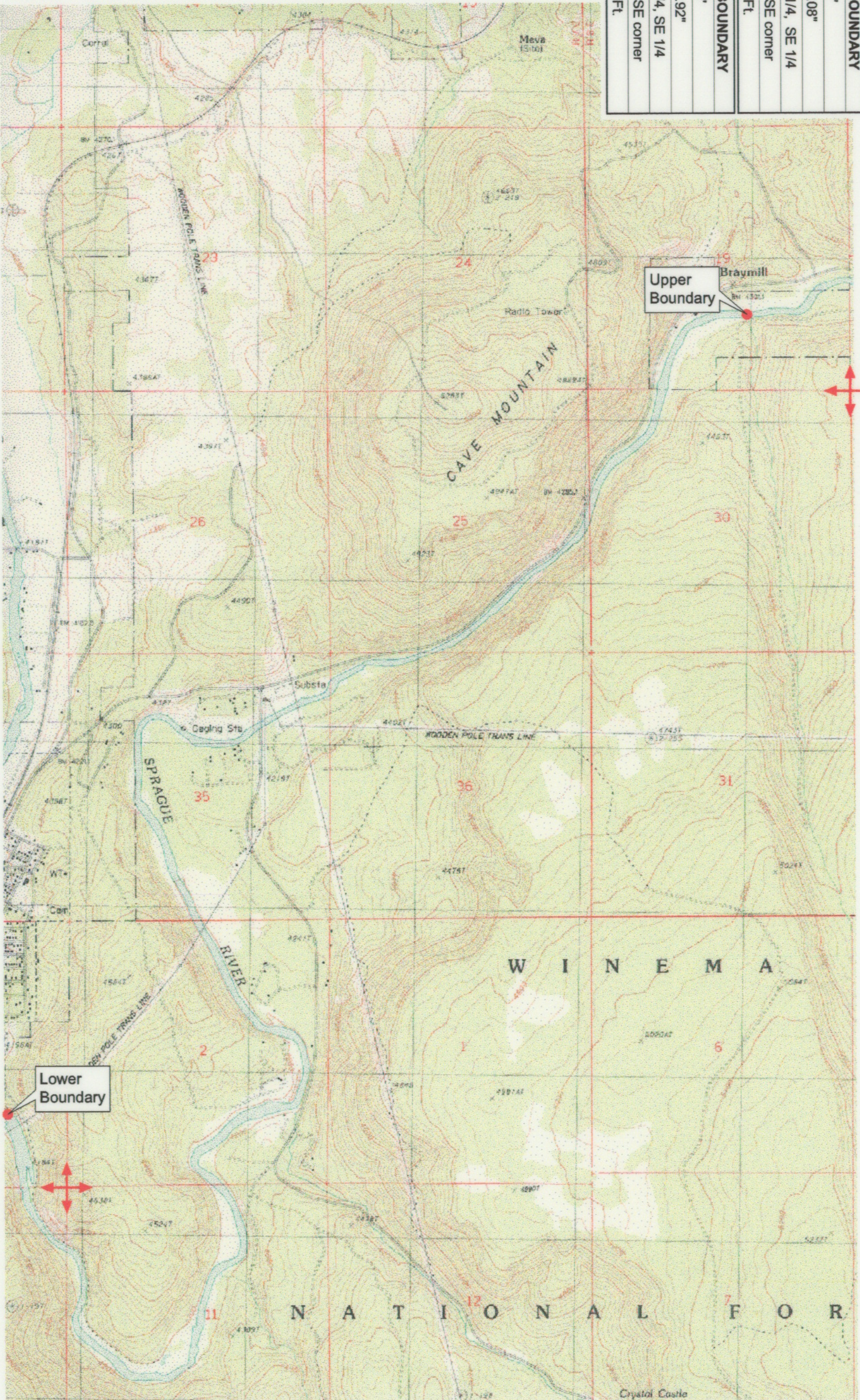


KLAMATH ADJUDICATION
CLAIM # 642 PAGE # **4**

Reach boundaries: Braymill to Chiloquin Dam.
Plate 1 of 1.

Klamath Basin Water Rights Claim Map
Department of the Interior Bureau of Indian Affairs
Reach Name: **Sprague River #2**
Scale: 1:24,000

UPPER REACH BOUNDARY	
Latitude:	42° 36' 25.64"
Longitude:	121° 48' 20.08"
T 34S, R 8E, S 19, NW 1/4, SE 1/4	
Bearing/Distance:	From SE corner N 51° 46' 43" W, 2,422.4 Ft.
LOWER REACH BOUNDARY	
Latitude:	42° 33' 47.28"
Longitude:	121° 51' 37.92"
T 35S, R 7E, S 3, NE 1/4, SE 1/4	
Bearing/Distance:	From SE corner N 40° 30' 34" W, 1,786.3 Ft.



KLAMATH ADJUDICATION
CLAIM # 642 PAGE # **015**

Reach boundaries: Braymill to Chilquinn Dam.
 Plate 1 of 1.

RECEIVED
 OCT 01 1999

Klamath Basin Water Rights Claim #642
 Department of the Interior Bureau of Indian Affairs
 Reach Name: **Sprague River #2 (SP 2)**
 Scale: 1:24,000
 (Amended)

WATER RESOURCES DEPT.
 SALEM, OREGON

\\latayette\Graphics\Projects\GIS\BIA\60177_26\topo\1177gus3.tif#8

Source: USGS 7.5 Minute
 Quad: Chilquinn.
 Vertical Datum: National Geodetic Vertical Datum of 1929.
 Horizontal Datum: 1927 North American Datum.

