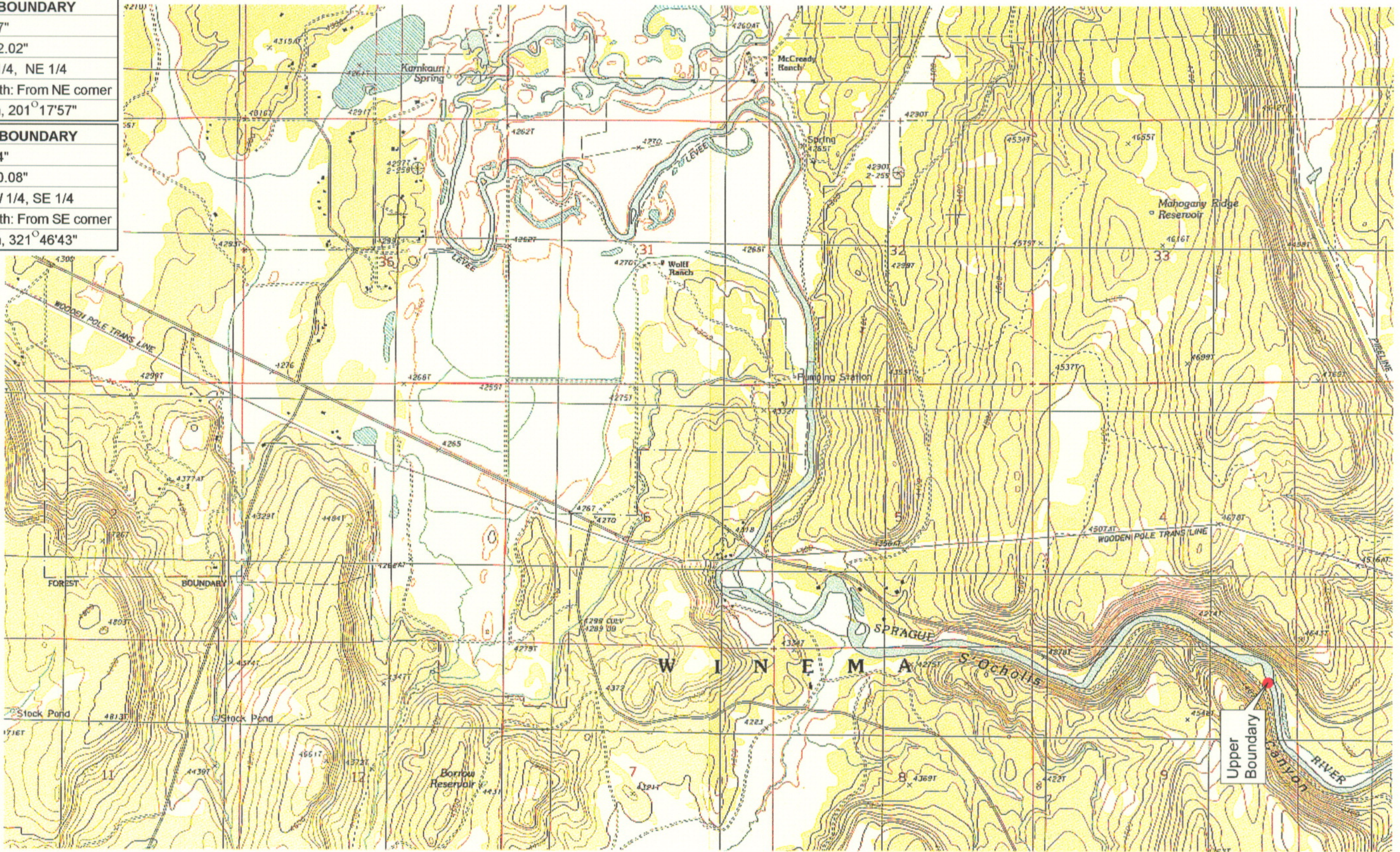


UPPER REACH BOUNDARY
Latitude: 42° 33' 20.57"
Longitude: 121° 38' 32.02"
T 35S, R 9E, S 9, NE 1/4, NE 1/4
Distance/Bearing/Azimuth: From NE corner S 21° 17' 57" W, 279.4m, 201° 17' 57"
LOWER REACH BOUNDARY
Latitude: 42° 36' 25.64"
Longitude: 121° 48' 20.08"
T 34S, R 8E, S 19, NW 1/4, SE 1/4
Distance/Bearing/Azimuth: From SE corner N 38° 13' 17" W, 738.3m, 321° 46' 43"

RECEIVED
MAR 01 1999
WATER RESOURCES DEPT
SALEM OREGON



Source: USGS 7.5 Minute
Quad: Chiloquin, S' Ocholis
Canyon.
Vertical Datum: National
Geodetic Vertical Datum of
1929.
Horizontal Datum: 1927 North
American Datum.

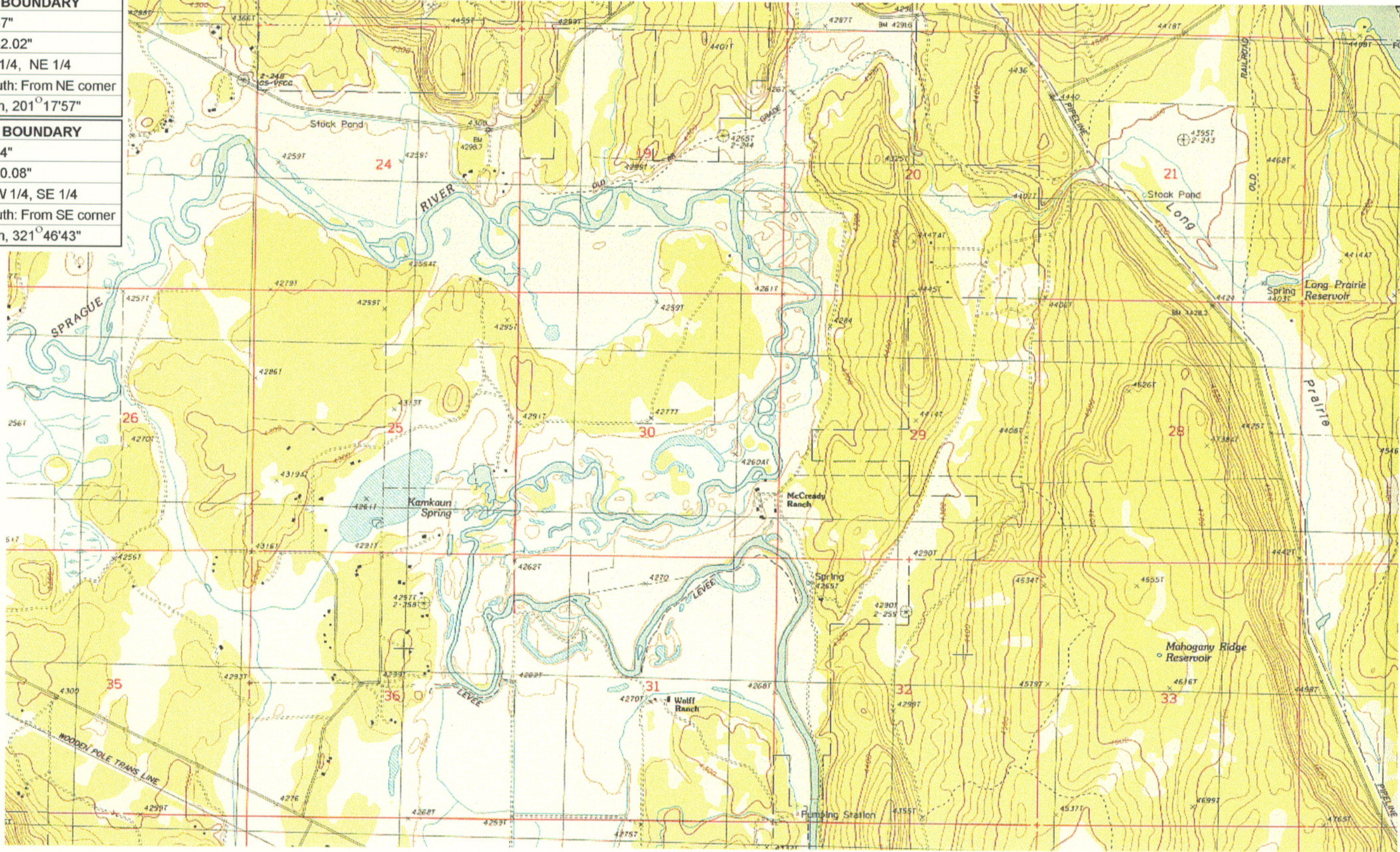
KLAMATH ADJUDICATION
CLAIM 643 PAGE # 6

Reach boundaries: S' Ocholis Canyon to Braymill.
Plate 1 of 3.

Klamath Basin Water Rights Claim Map
Department of the Interior Bureau of Indian Affairs
Reach Name: **Sprague River #3**
Scale: 1:24,000

UPPER REACH BOUNDARY
Latitude: 42° 33' 20.57"
Longitude: 121° 38' 32.02"
T 35S, R 9E, S 9, NE 1/4, NE 1/4
Distance/Bearing/Azimuth: From NE corner S 21° 17' 57" W, 279.4m, 201° 17' 57"
LOWER REACH BOUNDARY
Latitude: 42° 36' 25.64"
Longitude: 121° 48' 20.08"
T 34S, R 8E, S 19, NW 1/4, SE 1/4
Distance/Bearing/Azimuth: From SE corner N 38° 13' 17" W, 738.3m, 321° 46' 43"

RECEIVED
MAR 01 1999
WATER RESOURCES DEPT.
SALEM, OREGON



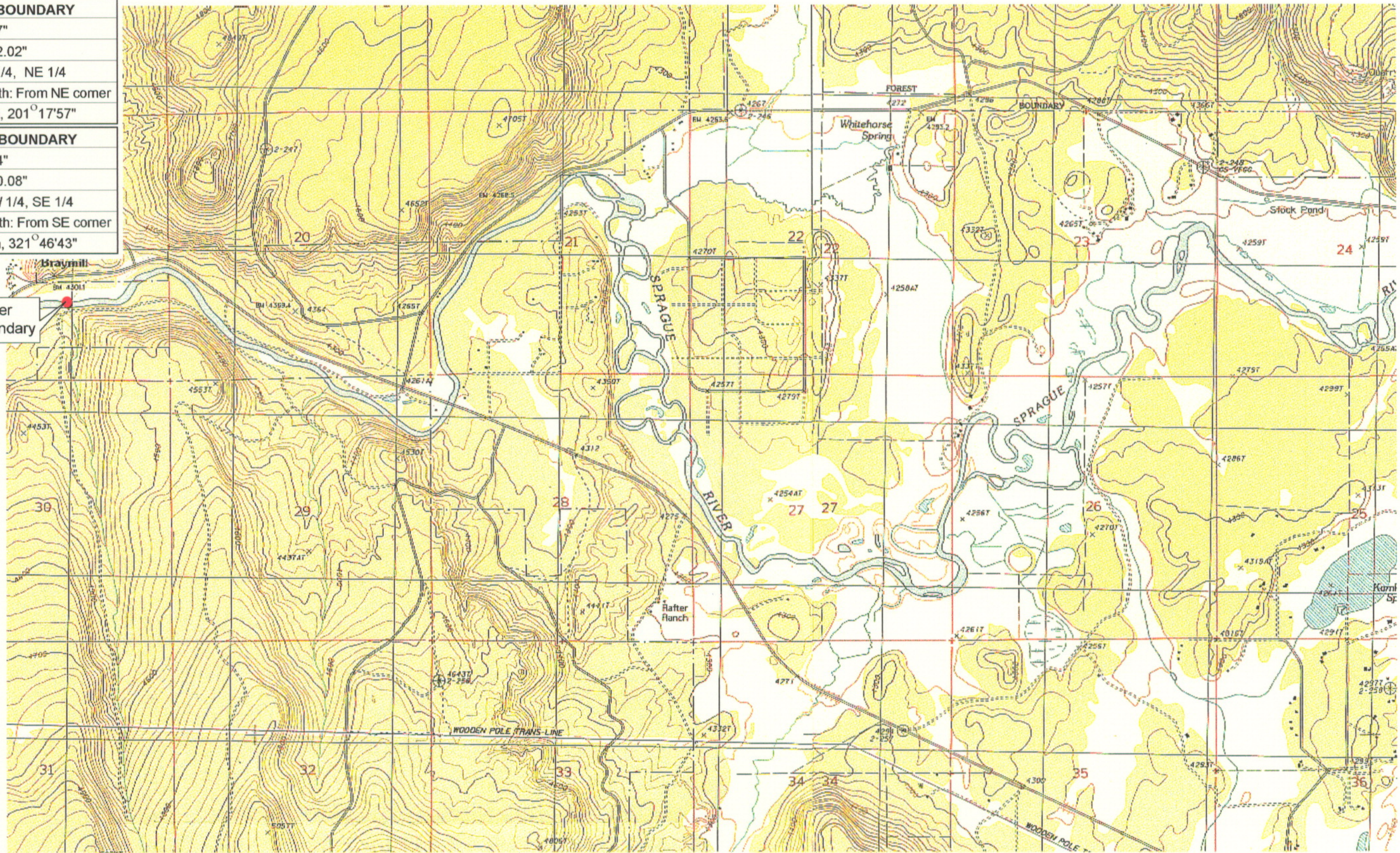
Source: USGS 7.5 Minute
Quad: Chiloquin, S' Ochois
Canyon.
Vertical Datum: National
Geodetic Vertical Datum of
1929.
Horizontal Datum: 1927 North
American Datum.

KLAMATH ADJUDICATION
CLAIM #643 PAGE # 7

Reach boundaries: S' Ochois Canyon to Braymill.
Plate 2 of 3.

Klamath Basin Water Rights Claim Map
Department of the Interior Bureau of Indian Affairs
Reach Name: **Sprague River #3**
Scale: 1:24,000

UPPER REACH BOUNDARY
Latitude: 42° 33' 20.57"
Longitude: 121° 38' 32.02"
T 35S, R 9E, S 9, NE 1/4, NE 1/4
Distance/Bearing/Azimuth: From NE corner S 21° 17' 57" W, 279.4m, 201° 17' 57"
LOWER REACH BOUNDARY
Latitude: 42° 36' 25.64"
Longitude: 121° 48' 20.08"
T 34S, R 8E, S 19, NW 1/4, SE 1/4
Distance/Bearing/Azimuth: From SE corner N 38° 13' 17" W, 738.3m, 321° 46' 43"



RECEIVED

MAR 01 1999

WATER RESOURCES DEPT.
SALEM, OREGON



Source: USGS 7.5 Minute
Quad: Chiloquin, S' Ocholis
Canyon.

Vertical Datum: National
Geodetic Vertical Datum of
1929.

Horizontal Datum: 1927 North
American Datum.

KLAMATH ADJUDICATION

CLAIM # **643** PAGE #

8

Reach boundaries: S' Ocholis Canyon to Braymill.
Plate 3 of 3.

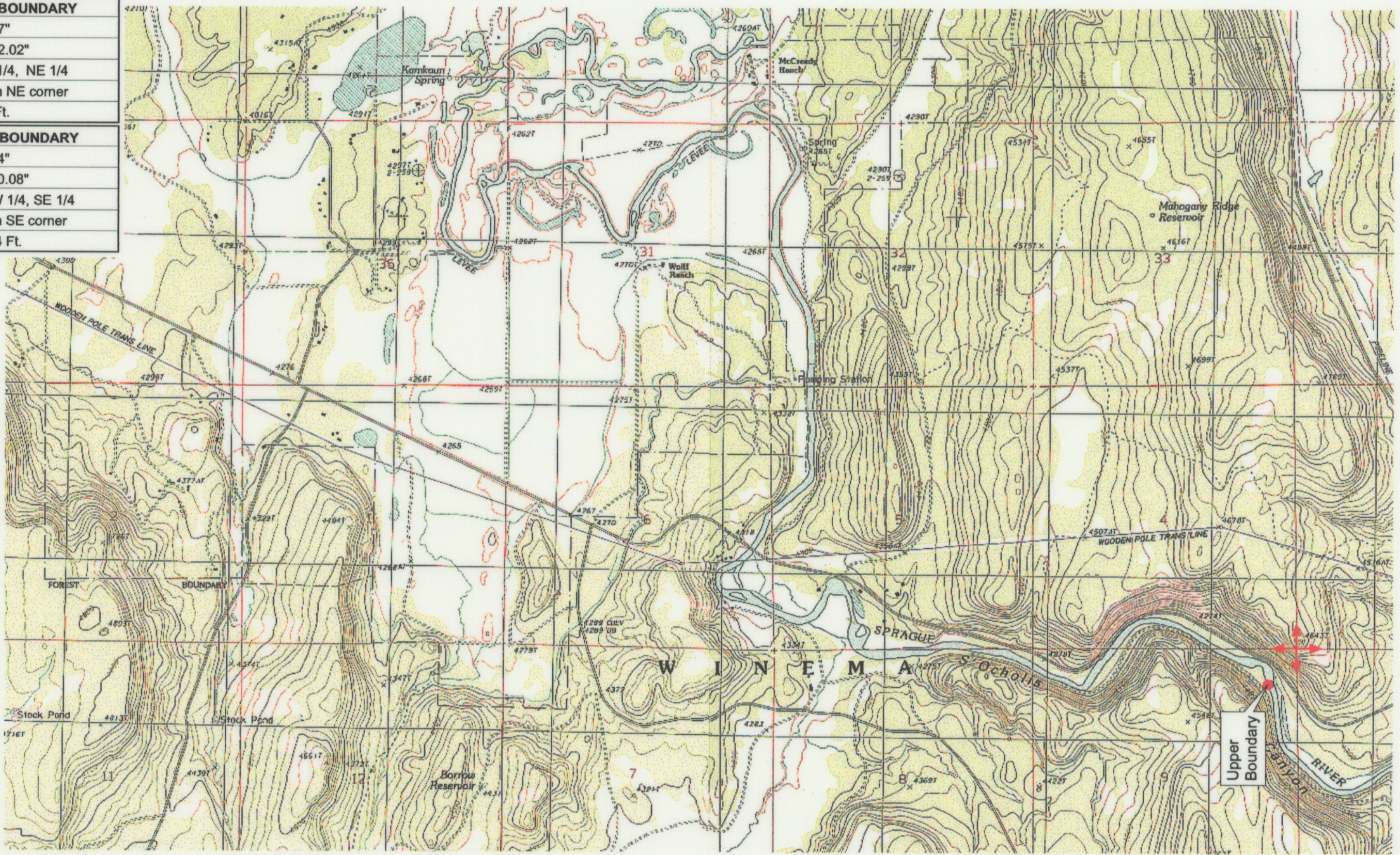
Klamath Basin Water Rights Claim Map

Department of the Interior Bureau of Indian Affairs

Reach Name: **Sprague River #3**

Scale: 1:24,000

UPPER REACH BOUNDARY
Latitude: 42° 33' 20.57"
Longitude: 121° 38' 32.02"
T 35S, R 9E, S 9, NE 1/4, NE 1/4
Bearing/Distance: From NE corner S 21° 17' 57" W, 916.9 Ft.
LOWER REACH BOUNDARY
Latitude: 42° 36' 25.64"
Longitude: 121° 48' 20.08"
T 34S, R 8E, S 19, NW 1/4, SE 1/4
Bearing/Distance: From SE corner N 51° 46' 43" W, 2,422.4 Ft.



Source: USGS 7.5 Minute Quad: Chiloquin, S' Ocholis Canyon.

Vertical Datum: National Geodetic Vertical Datum of 1929.
Horizontal Datum: 1927 North American Datum.

KLAMATH ADJUDICATION
CLAIM # 643
PAGE # 019

Reach boundaries: S' Ocholis Canyon to Braymill.
 Plate 1 of 3.

RECEIVED

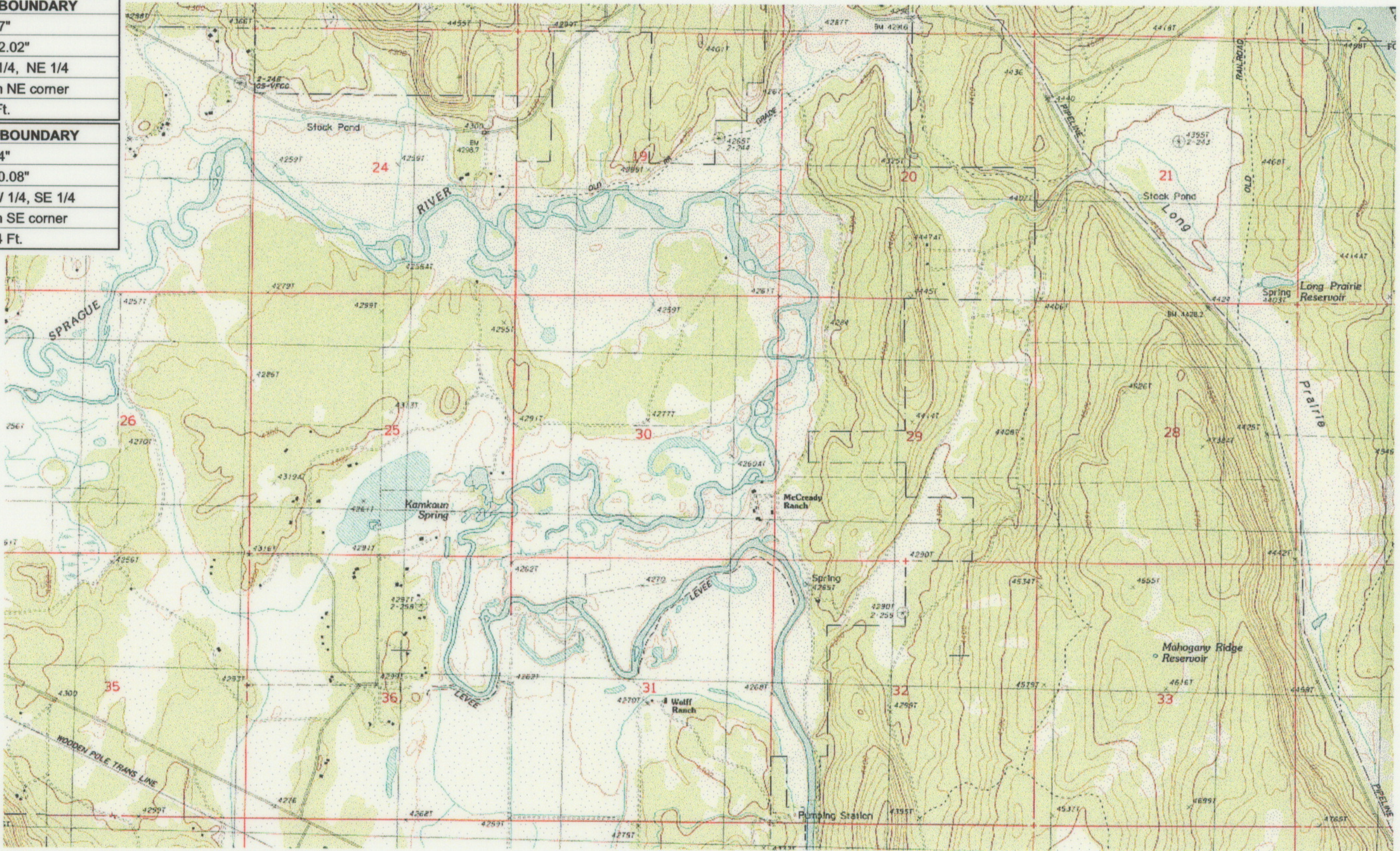
OCT 01 1999

WATER RESOURCES DEPT.
 SALEM, OREGON

Klamath Basin Water Rights Claim #643
 Department of the Interior Bureau of Indian Affairs
 Reach Name: **Sprague River #3 (SP 3)**
 Scale: 1:24,000 (Amended)

\\Lafayette\Graphics\Projects\GIS\BIA\60177.26\Topo\1117gis3.fh8

UPPER REACH BOUNDARY	
Latitude:	42° 33' 20.57"
Longitude:	121° 38' 32.02"
T 35S, R 9E, S 9, NE 1/4, NE 1/4	
Bearing/Distance: From NE corner	
S 21° 17' 57" W, 916.9 Ft.	
LOWER REACH BOUNDARY	
Latitude:	42° 36' 25.64"
Longitude:	121° 48' 20.08"
T 34S, R 8E, S 19, NW 1/4, SE 1/4	
Bearing/Distance: From SE corner	
N 51° 46' 43" W, 2,422.4 Ft.	



Source: USGS 7.5 Minute Quad: Chiloquin, S' Ochois Canyon.
 Vertical Datum: National Geodetic Vertical Datum of 1929.
 Horizontal Datum: 1927 North American Datum.

KLAMATH ADJUDICATION
CLAIM # 643 PAGE # 020

Reach boundaries: S' Ochois Canyon to Braymill.
 Plate 2 of 3.

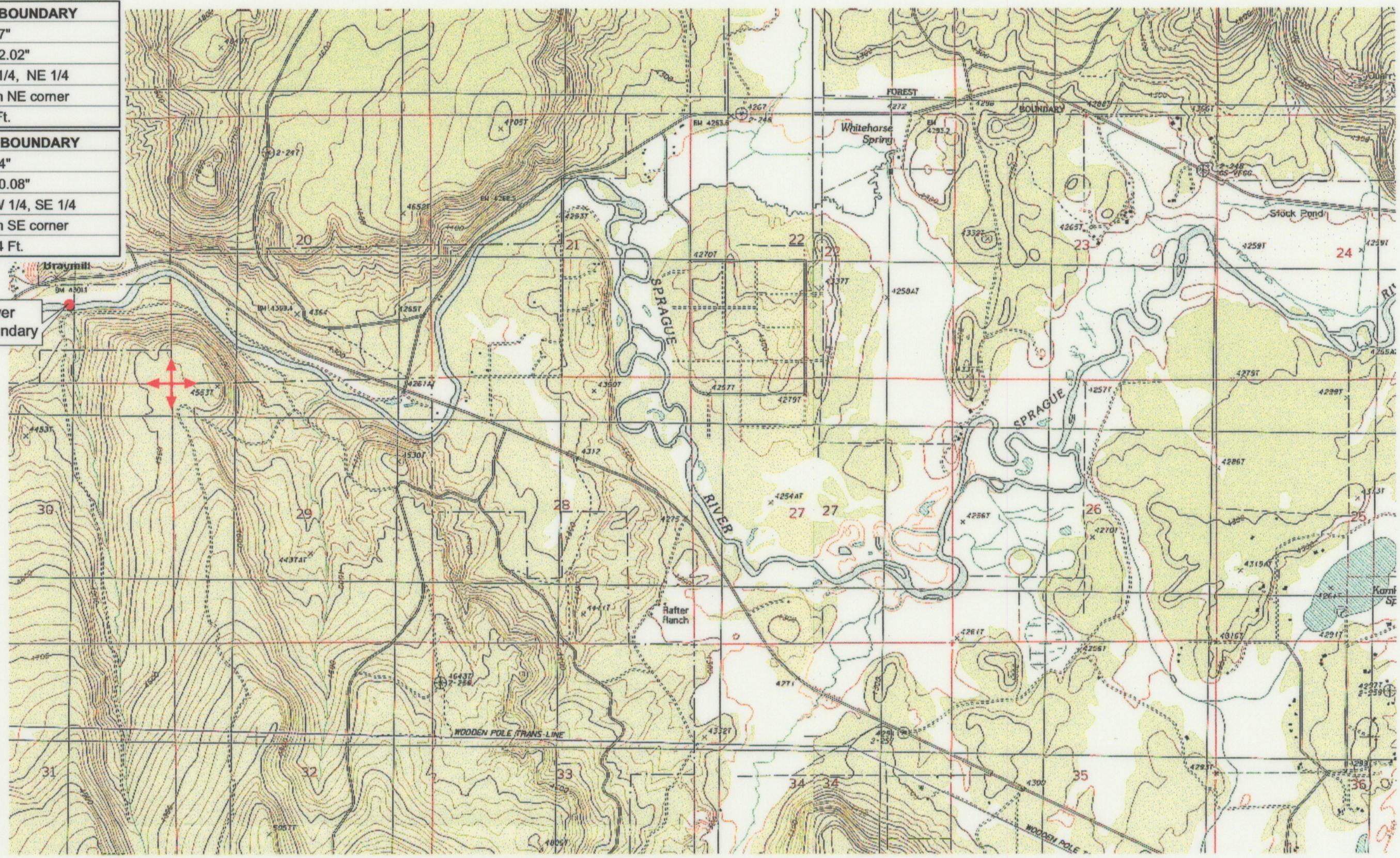
RECEIVED
 OCT 01 1999

Klamath Basin Water Rights Claim #643
 Department of the Interior Bureau of Indian Affairs
 Reach Name: **Sprague River #3 (SP 3)**
 Scale: 1:24,000 (Amended)

WATER RESOURCES DEPT.
 SALEM, OREGON

\\Lafayette\Graphics\Projects\GIS\BIA\60177.26\Topo\1117gis3.frb

UPPER REACH BOUNDARY
Latitude: 42° 33' 20.57"
Longitude: 121° 38' 32.02"
T 35S, R 9E, S 9, NE 1/4, NE 1/4
Bearing/Distance: From NE corner
S 21° 17' 57" W, 916.9 Ft.
LOWER REACH BOUNDARY
Latitude: 42° 36' 25.64"
Longitude: 121° 48' 20.08"
T 34S, R 8E, S 19, NW 1/4, SE 1/4
Bearing/Distance: From SE corner
N 51° 46' 43" W, 2,422.4 Ft.



Source: USGS 7.5 Minute Quad: Chiloquin, S' Ocholis Canyon.
 Vertical Datum: National Geodetic Vertical Datum of 1929.
 Horizontal Datum: 1927 North American Datum.

KLAMATH ADJUDICATION
CLAIM # 643 PAGE 021

Reach boundaries: S' Ocholis Canyon to Braymill.
 Plate 3 of 3.

RECEIVED
OCT 01 1999
 WATER RESOURCES DEPT.
 SALEM, OREGON

Klamath Basin Water Rights Claim #643
 Department of the Interior Bureau of Indian Affairs
 Reach Name: **Sprague River #3 (SP 3)**
 Scale: 1:24,000 (Amended)

\\Lafayette\Graphics\Projects\GIS\BIA\60177.26\Topo\1117gis3.fh8