

<b>UPPER REACH BOUNDARY</b>	
Latitude:	42° 29' 59.77"
Longitude:	121° 35' 50.48"
T 35S, R 9E, S 36, NE 1/4, NW 1/4	
Distance/Bearing/Azimuth:	From NW corner S 16° 26' 52" E, 464.7m, 163° 33' 8"
<b>LOWER REACH BOUNDARY</b>	
Latitude:	42° 33' 20.57"
Longitude:	121° 38' 32.02"
T 35S, R 9E, S 9, NE 1/4, NE 1/4	
Distance/Bearing/Azimuth:	From NE corner S 21° 17' 57" W, 279.4m, 201° 17' 57"

**RECEIVED**

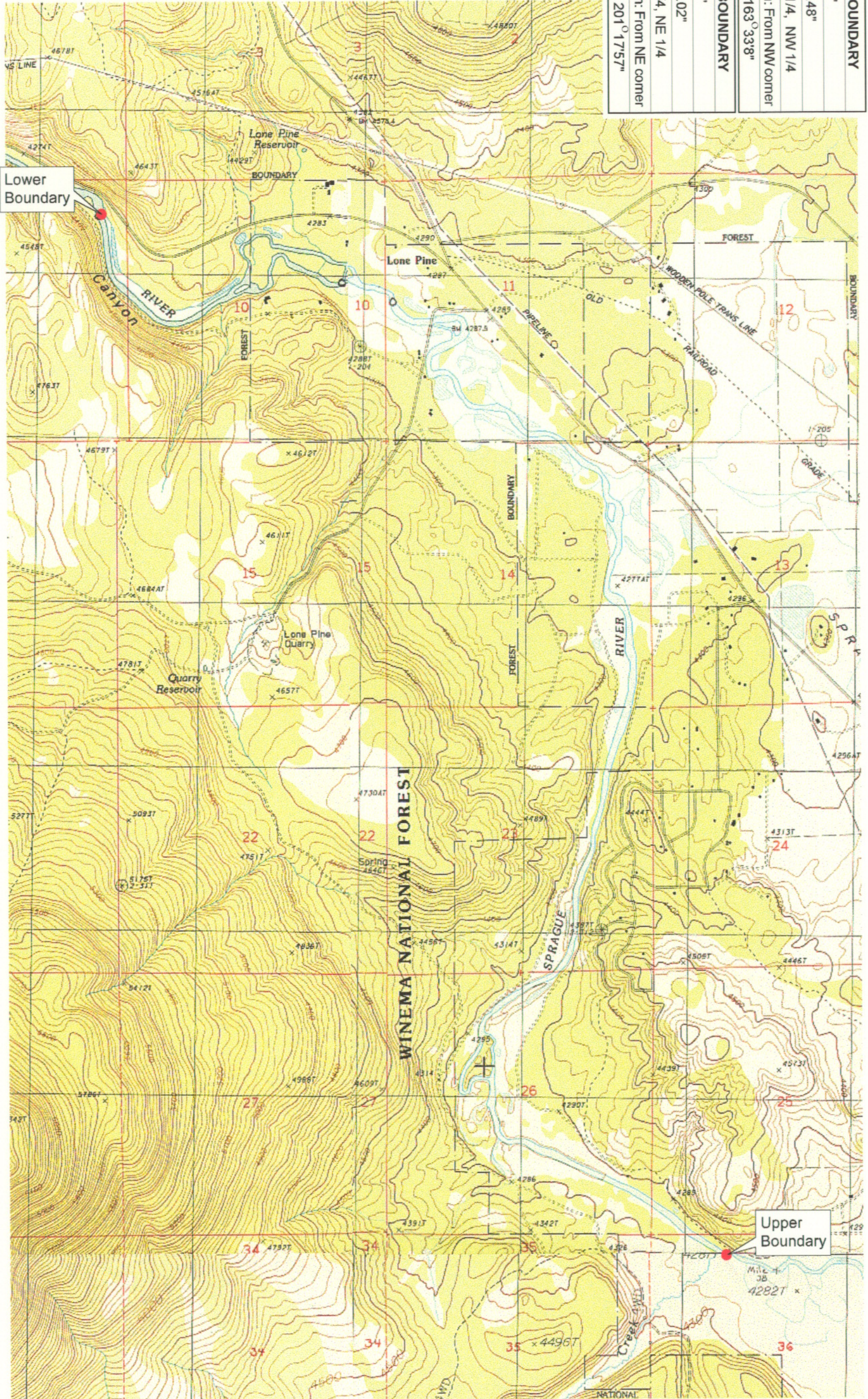
MAR 01 1999

WATER RESOURCES DEPT.  
SALEM, OREGON



Source: USGS 7.5 Minute  
Quad: Sprague River West,  
S. Ocholis Canyon, Buttes of  
the Gods.

Vertical Datum: National  
Geodetic Vertical Datum of  
1929.  
Horizontal Datum: 1927 North  
American Datum.



**KLAMATH ADJUDICATION**  
**CLAIM # 644** PAGE # **4**

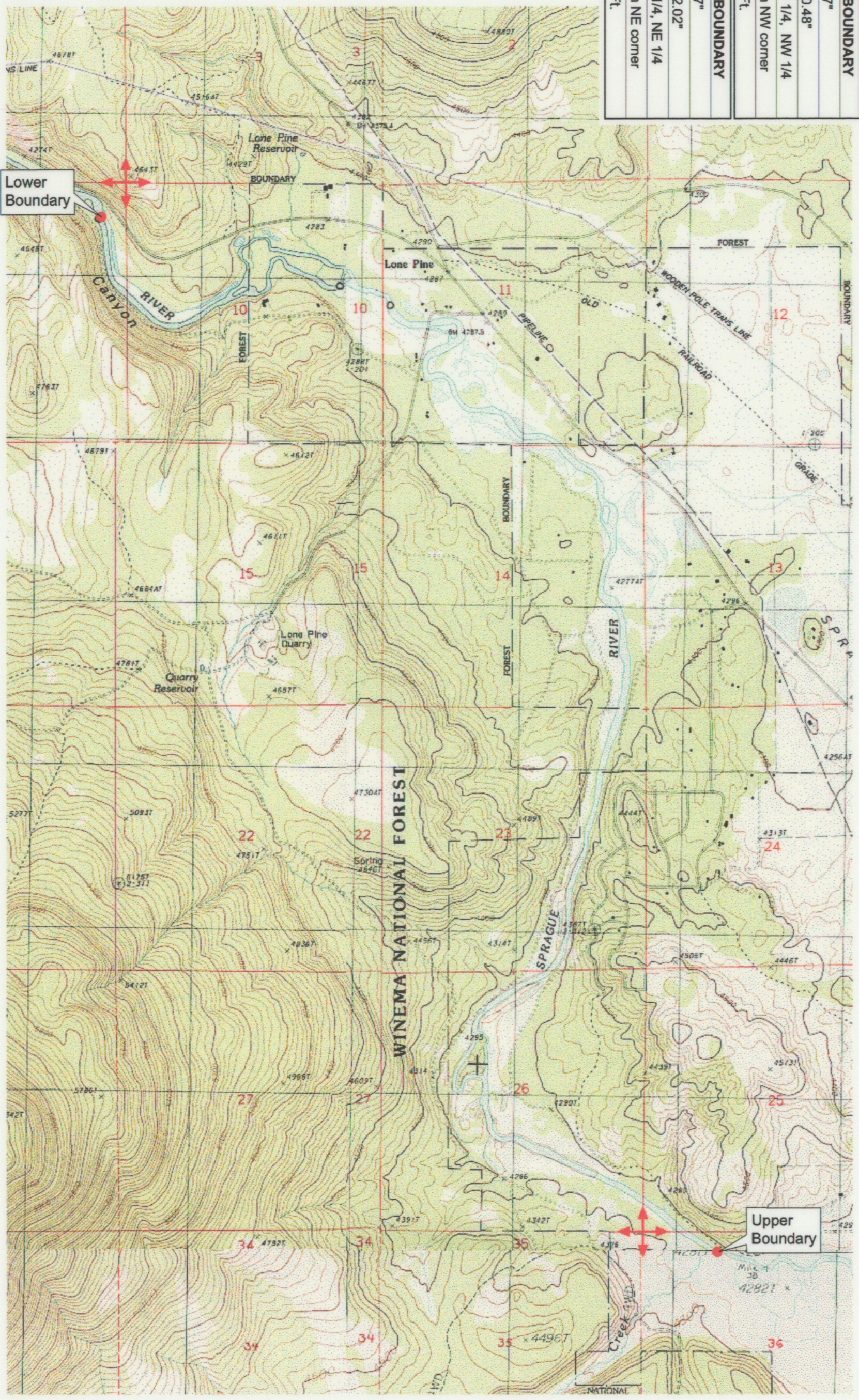
Reach boundaries: Trout Creek to Upper end of S' Ocholis Canyon.  
Plate 1 of 1.

**Klamath Basin Water Rights Claim Map**  
Department of the Interior Bureau of Indian Affairs  
Reach Name: **Sprague River #4**  
Scale: 1:24,000

<b>UPPER REACH BOUNDARY</b>
Latitude: 42° 29' 59.77"
Longitude: 121° 35' 50.48"
T 35S, R 9E, S 36, NE 1/4, NW 1/4
Bearing/Distance: From NW corner S 73° 33' 8" E, 1,524.6 Ft.
<b>LOWER REACH BOUNDARY</b>
Latitude: 42° 33' 20.57"
Longitude: 121° 38' 32.02"
T 35S, R 9E, S 9, NE 1/4, NE 1/4
Bearing/Distance: From NE corner S 21° 17' 57" W, 916.9 Ft.



Source: USGS 7.5 Minute Quad: Sprague River West, S' Ocholis Canyon, Buttes of the Gods.  
Vertical Datum: National Geodetic Vertical Datum of 1929.  
Horizontal Datum: 1927 North American Datum.



**KLAMATH ADJUDICATION**  
CLAIM # 644 PAGE # 015

Reach boundaries: Trout Creek to Upper end of S' Ocholis Canyon.  
Plate 1 of 1.

**RECEIVED**

OCT 01 1999

WATER RESOURCES DEPT.  
SALEM, OREGON

Klamath Basin Water Rights Claim #644  
Department of the Interior Bureau of Indian Affairs  
Reach Name: Sprague River #4 (SP 4)  
Scale: 1:24,000  
(Amended)

\\slayville\Graphics\Projects\GIS\BIA\60177\_26\Topo\117\gis3.mxd