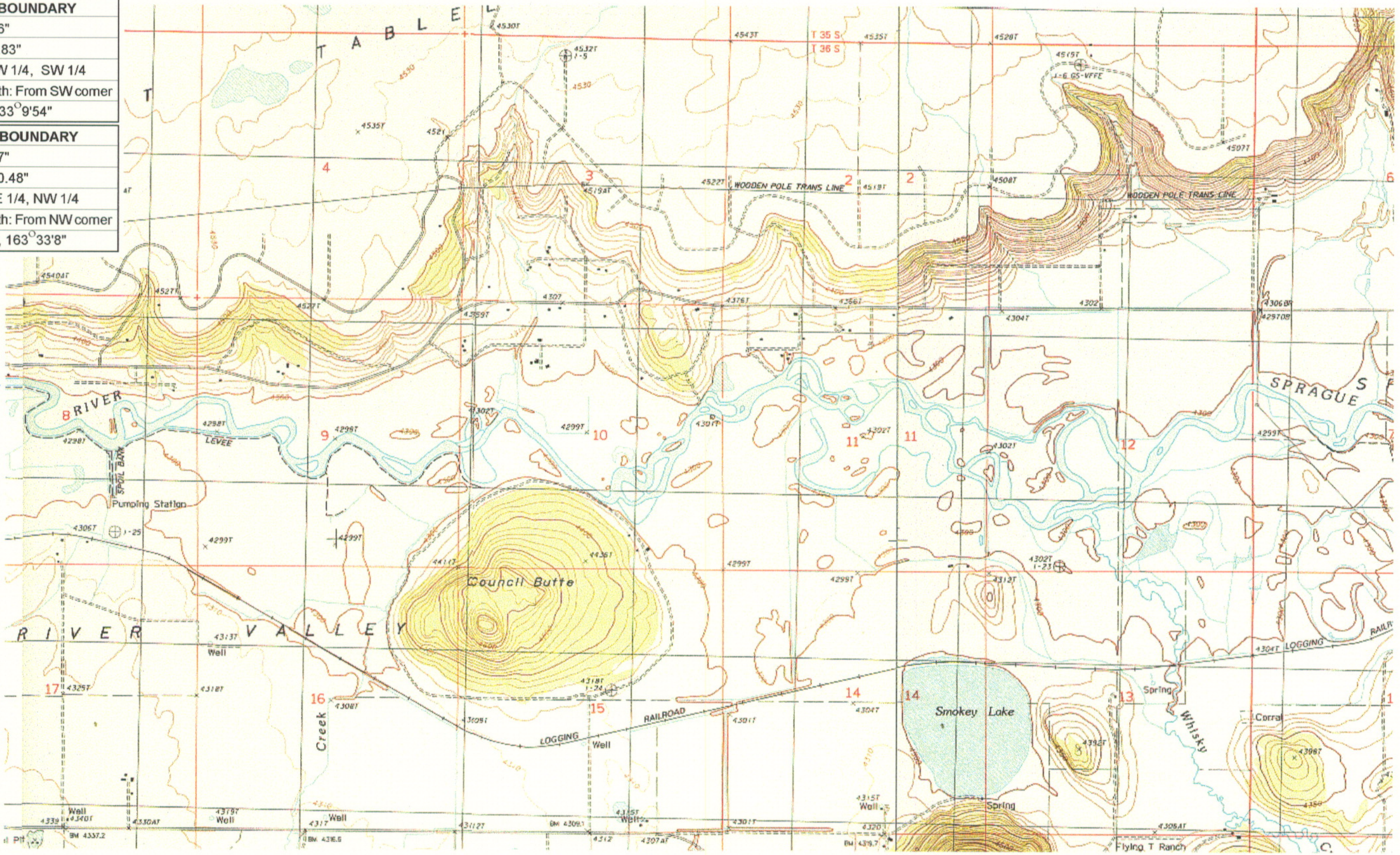


UPPER REACH BOUNDARY	
Latitude:	42° 27' 38.36"
Longitude:	121° 17' 9.83"
T 36S, R12E, S 10, NW 1/4, SW 1/4	
Distance/Bearing/Azimuth: From SW corner N 33° 9' 54" E, 541.8m, 33° 9' 54"	
LOWER REACH BOUNDARY	
Latitude:	42° 29' 59.77"
Longitude:	121° 35' 50.48"
T 35S, R 9E, S 36, NE 1/4, NW 1/4	
Distance/Bearing/Azimuth: From NW corner S 16° 26' 52" E, 464.7m, 163° 33' 8"	

RECEIVED

MAR 01 1999

WATER RESOURCES DEPT.
SALEM, OREGON



Source: USGS 7.5 Minute
Quad: Beatty, Sprague River
East, Buttes of the Gods,
Sprague River West.

Vertical Datum: National
Geodetic Vertical Datum of
1929.

Horizontal Datum: 1927 North
American Datum.

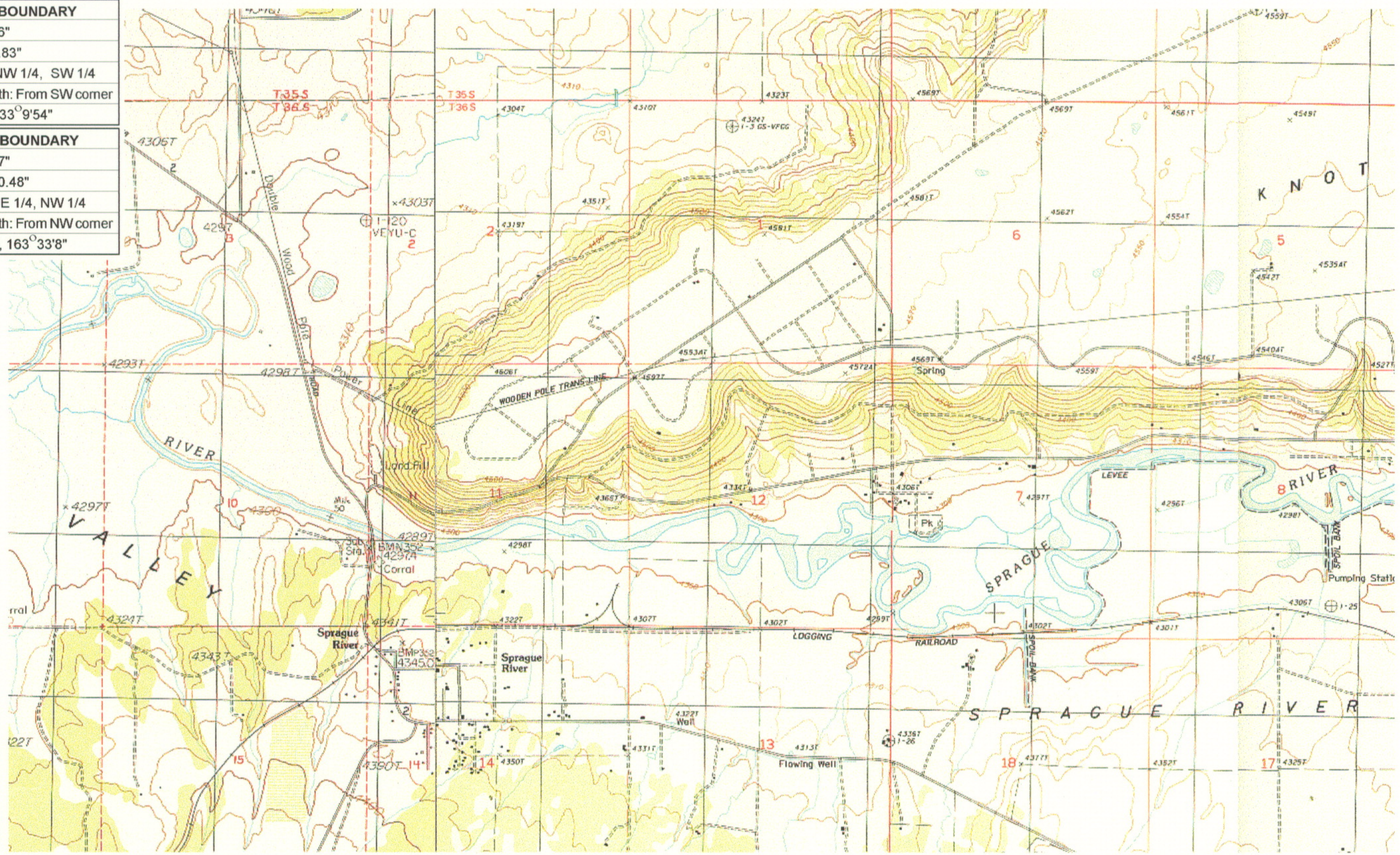
KLAMATH ADJUDICATION

CLAIM # **45** PAGE # **7**

Reach: Sycan River to Trout Creek.
Plate 2 of 4.

Klamath Basin Water Rights Claim Map
Department of the Interior Bureau of Indian Affairs
Reach Name: **Sprague River #5**
Scale: 1:24,000

UPPER REACH BOUNDARY
Latitude: 42° 27' 38.36"
Longitude: 121° 17' 9.83"
T 36S, R12E, S 10, NW 1/4, SW 1/4
Distance/Bearing/Azimuth: From SW corner N 33° 9' 54" E, 541.8m, 33° 9' 54"
LOWER REACH BOUNDARY
Latitude: 42° 29' 59.77"
Longitude: 121° 35' 50.48"
T 35S, R 9E, S 36, NE 1/4, NW 1/4
Distance/Bearing/Azimuth: From NW corner S 16° 26' 52" E, 464.7m, 163° 33' 8"



RECEIVED

MAR 01 1999

WATER RESOURCES DEPT
SALEM, OREGON



Source: USGS 7.5 Minute Quad:
Beatty, Sprague River East, Buttes of the Gods, Sprague River West.

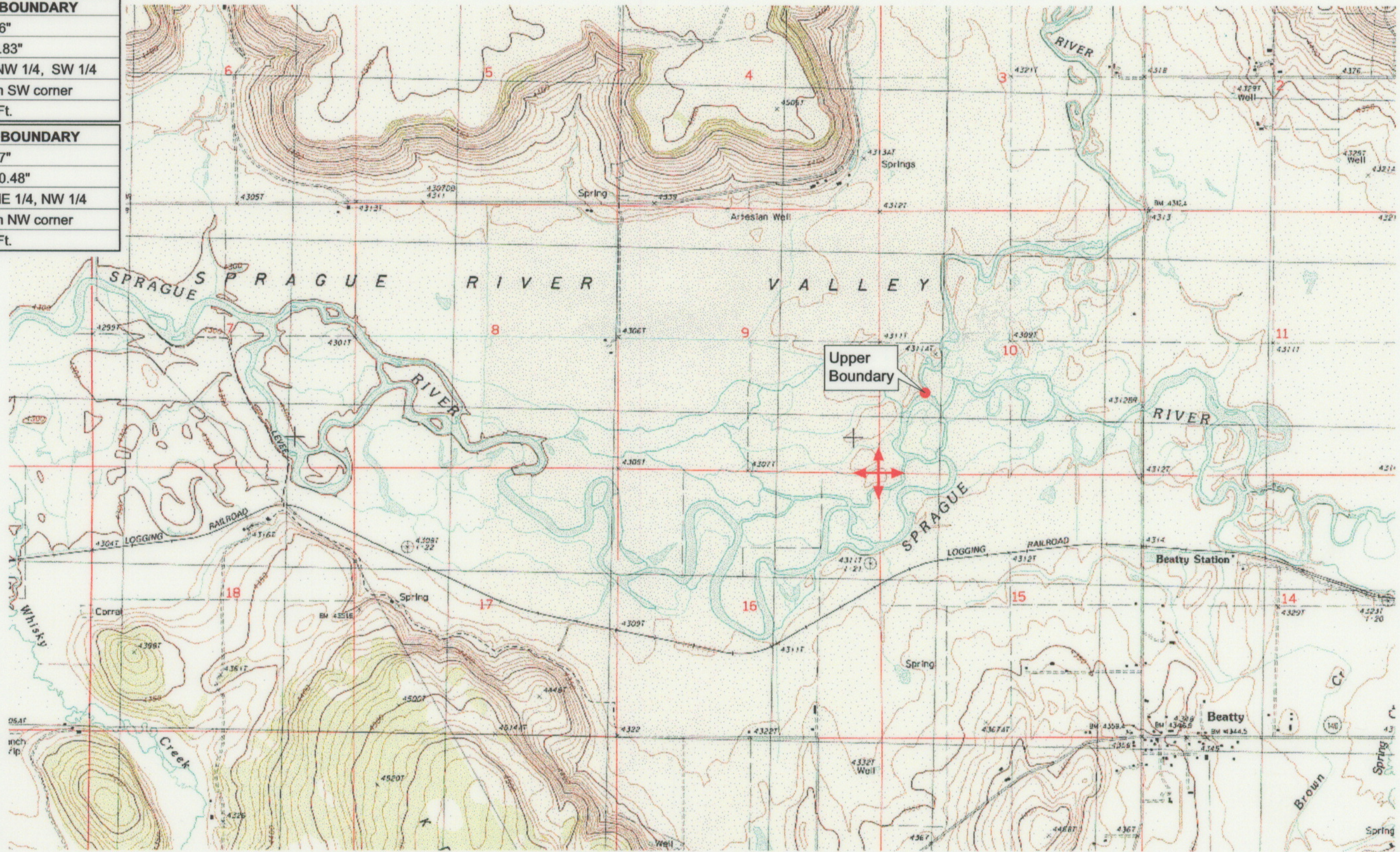
Vertical Datum: National Geodetic Vertical Datum of 1929.
Horizontal Datum: 1927 North American Datum.

KLAMATH ADJUDICATION
CLAIM #645 PAGE # 8

Reach boundaries: Sycan River to Trout Creek.
Plate 3 of 4.

Klamath Basin Water Rights Claim Map
Department of the Interior Bureau of Indian Affairs
Reach Name: **Sprague River #5**
Scale: 1:24,000

UPPER REACH BOUNDARY	
Latitude:	42° 27' 38.36"
Longitude:	121° 17' 9.83"
T 36S, R12E, S 10, NW 1/4, SW 1/4	
Bearing/Distance: From SW corner N 33° 9' 54" E, 1,777.7 Ft.	
LOWER REACH BOUNDARY	
Latitude:	42° 29' 59.77"
Longitude:	121° 35' 50.48"
T 35S, R 9E, S 36, NE 1/4, NW 1/4	
Bearing/Distance: From NW corner S 73° 33' 8" E, 1,524.6 Ft.	



Source: USGS 7.5 Minute
 Quad: Beatty, Sprague River
 East, Buttes of the Gods,
 Sprague River West.

Vertical Datum: National
 Geodetic Vertical Datum of
 1929.

Horizontal Datum: 1927 North
 American Datum.

KLAMATH ADJUDICATION
CLAIM # 645 PAGE # 020

Reach boundaries: Sycan River to Trout Creek.
 Plate 1 of 4.

RECEIVED

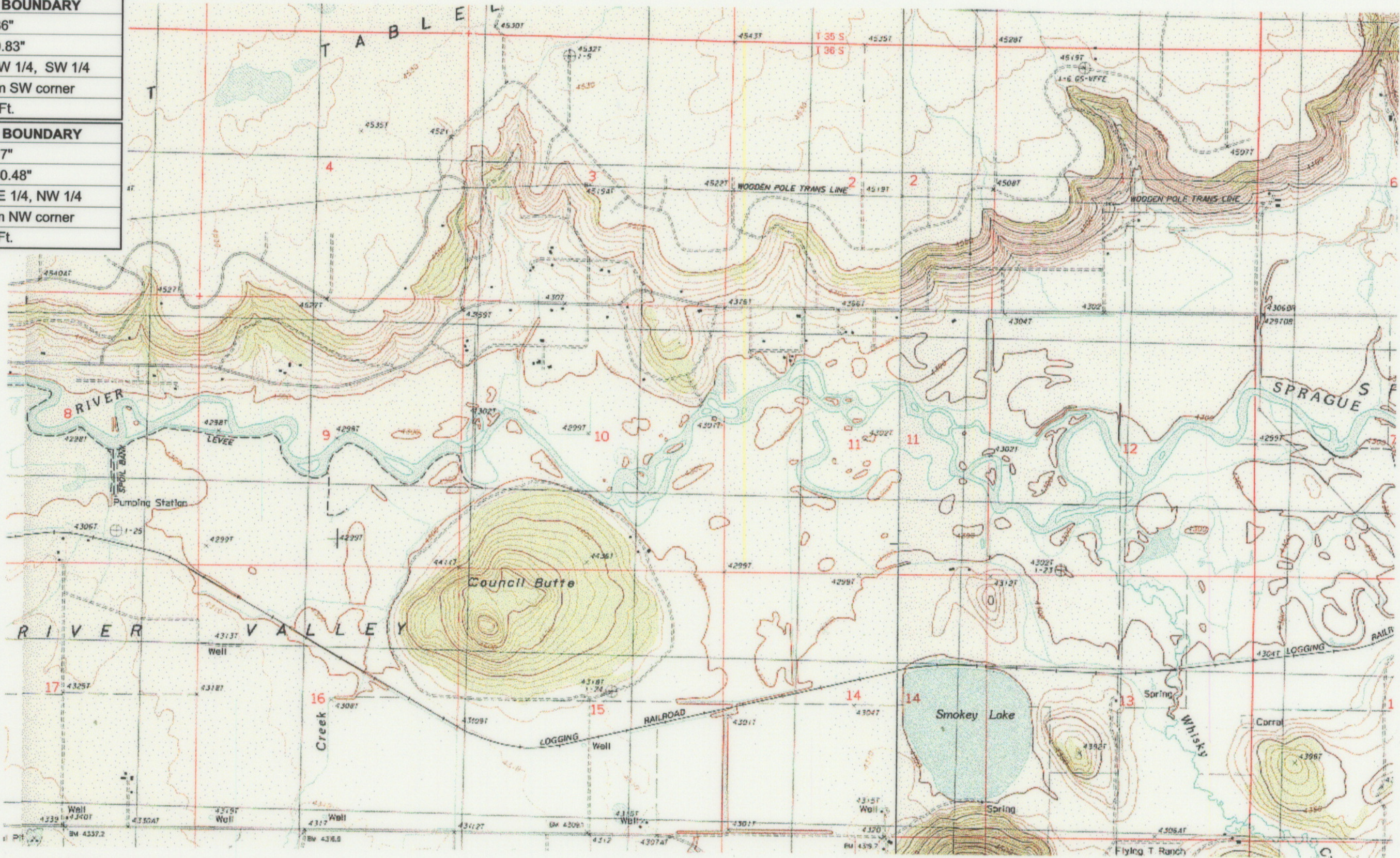
OCT 01 1999

WATER RESOURCES DEPT.
 SALEM, OREGON

Klamath Basin Water Rights Claim #645
 Department of the Interior Bureau of Indian Affairs
 Reach Name: **Sprague River #5 (SP 5)**
 Scale: 1:24,000 (Amended)

\\Lafayette\Graphics\Projects\GIS\BIA\60177.26\Topo\1117gis3.fh8

UPPER REACH BOUNDARY
Latitude: 42° 27' 38.36"
Longitude: 121° 17' 9.83"
T 36S, R12E, S 10, NW 1/4, SW 1/4
Bearing/Distance: From SW corner N 33° 9' 54" E, 1,777.7 Ft.
LOWER REACH BOUNDARY
Latitude: 42° 29' 59.77"
Longitude: 121° 35' 50.48"
T 35S, R 9E, S 36, NE 1/4, NW 1/4
Bearing/Distance: From NW corner S 73° 33' 8" E, 1,524.6 Ft.



Source: USGS 7.5 Minute Quad: Beatty, Sprague River East, Buttes of the Gods, Sprague River West.

Vertical Datum: National Geodetic Vertical Datum of 1929.

Horizontal Datum: 1927 North American Datum.

KLAMATH ADJUDICATION
CLAIM # 645 - PAGE # **021**

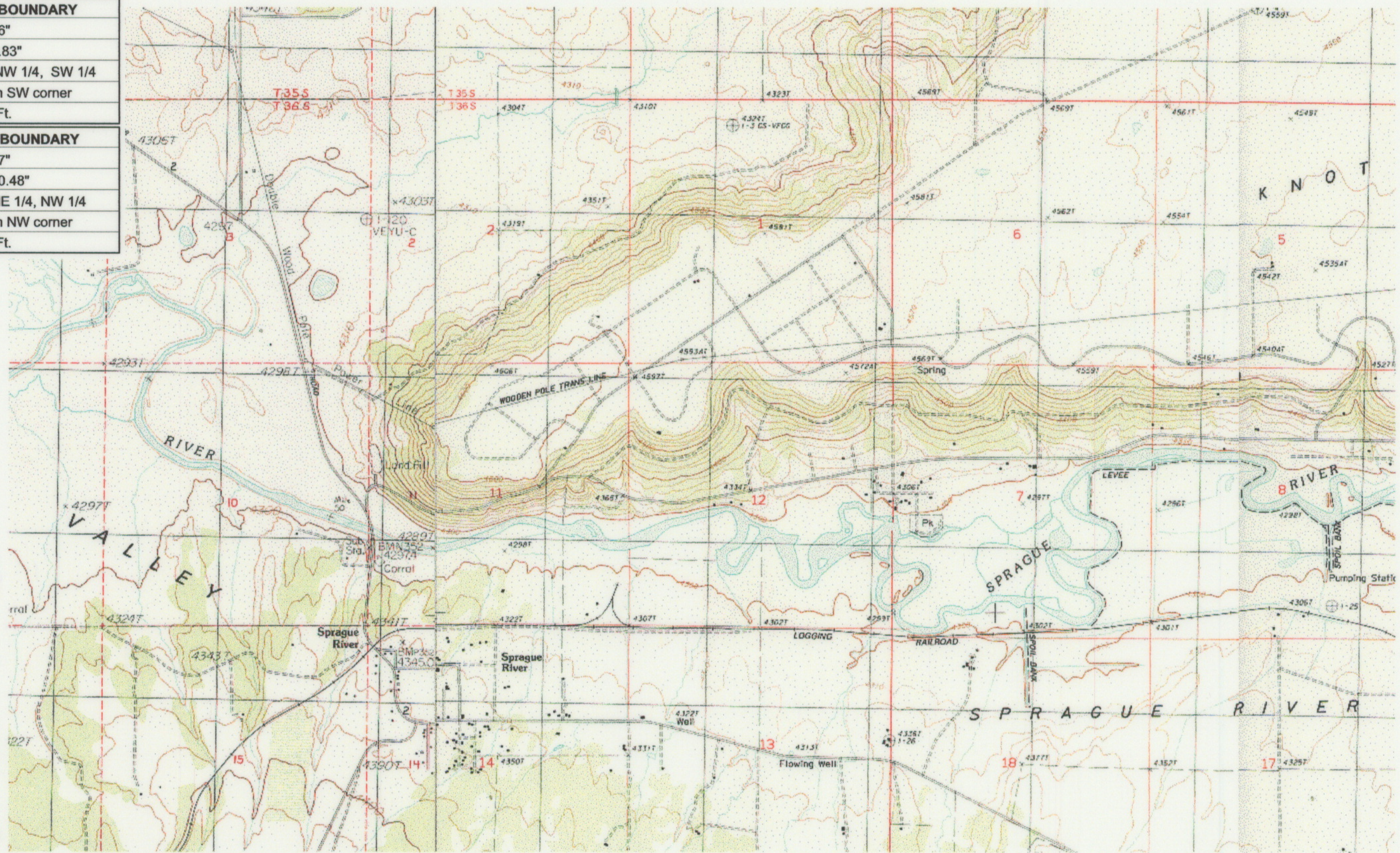
Reach: Sycan River to Trout Creek.
 Plate 2 of 4.

RECEIVED
 OCT 01 1999
 WATER RESOURCES DEPT.
 SALEM, OREGON

Klamath Basin Water Rights Claim #645
 Department of the Interior Bureau of Indian Affairs
 Reach Name: **Sprague River #5 (SP 5)**
 Scale: 1:24,000 (Amended)

\\Lafayette\Graphics\Projects\GIS\BIA\60177.26\Topo\1117gis3.fh8

UPPER REACH BOUNDARY	
Latitude:	42° 27' 38.36"
Longitude:	121° 17' 9.83"
T 36S, R12E, S 10, NW 1/4, SW 1/4	
Bearing/Distance: From SW corner	
N 33° 9' 54" E, 1,777.7 Ft.	
LOWER REACH BOUNDARY	
Latitude:	42° 29' 59.77"
Longitude:	121° 35' 50.48"
T 35S, R 9E, S 36, NE 1/4, NW 1/4	
Bearing/Distance: From NW corner	
S 73° 33' 8" E, 1,524.6 Ft.	



Source: USGS 7.5 Minute Quad: Beatty, Sprague River East, Buttes of the Gods, Sprague River West.

Vertical Datum: National Geodetic Vertical Datum of 1929.
 Horizontal Datum: 1927 North American Datum.

KLAMATH ADJUDICATION
CLAIM # 645 PAGE # 022

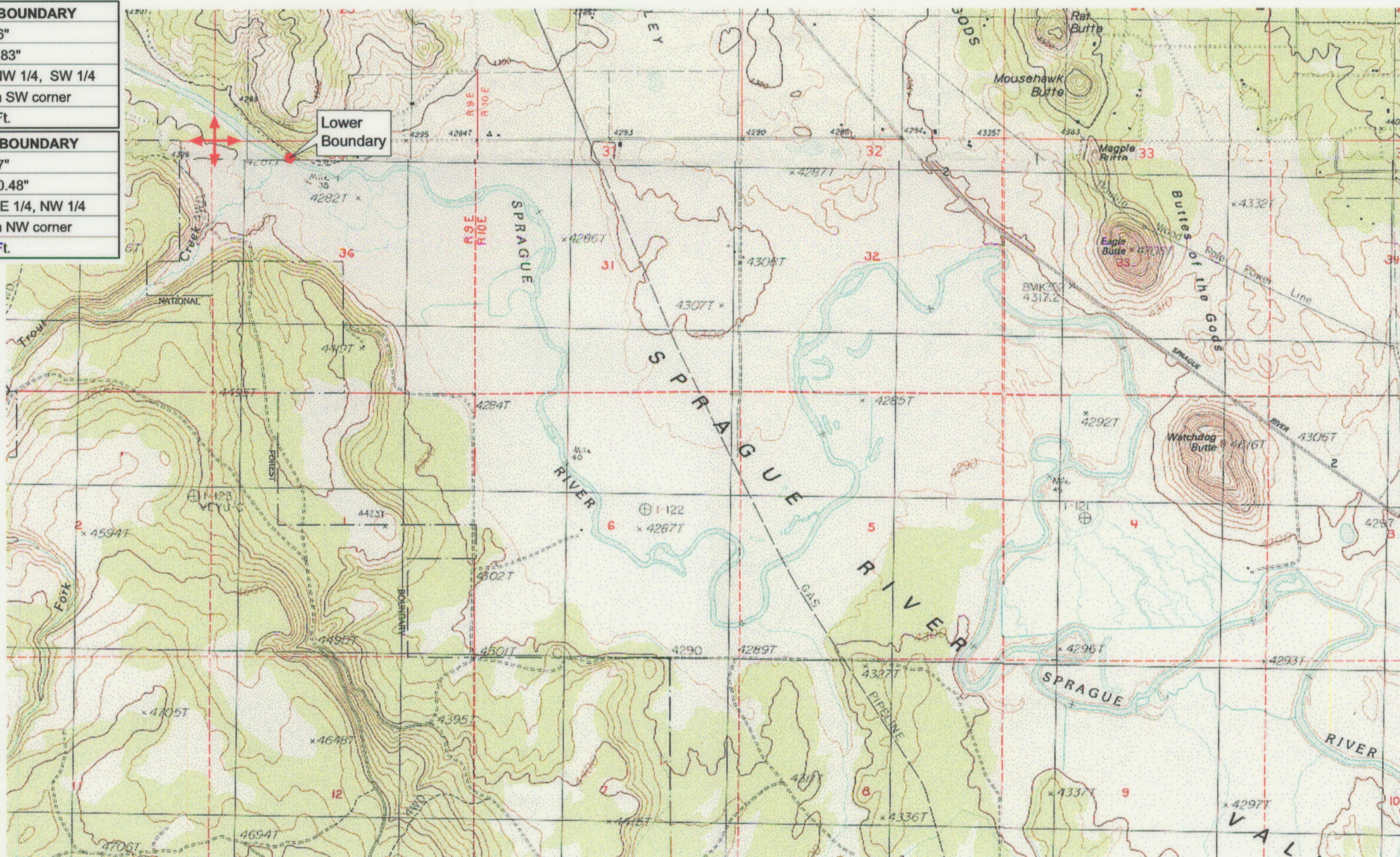
Reach boundaries: Sycan River to Trout Creek.
 Plate 3 of 4.

RECEIVED
OCT 01 1999
 WATER RESOURCES DEPT.
 SALEM, OREGON

Klamath Basin Water Rights Claim #645
 Department of the Interior Bureau of Indian Affairs
 Reach Name: **Sprague River #5 (SP 5)**
 Scale: 1:24,000 (Amended)

\\Lafayette\Graphics\Projects\GIS\BIA\60177.26\Topo\1117gis3.fh8

UPPER REACH BOUNDARY
Latitude: 42° 27' 38.36"
Longitude: 121° 17' 9.83"
T 36S, R12E, S 10, NW 1/4, SW 1/4
Bearing/Distance: From SW corner N 33° 9' 54" E, 1,777.7 Ft.
LOWER REACH BOUNDARY
Latitude: 42° 29' 59.77"
Longitude: 121° 35' 50.48"
T 35S, R 9E, S 36, NE 1/4, NW 1/4
Bearing/Distance: From NW corner S 73° 33' 8" E, 1,524.6 Ft.



Source: USGS 7.5 Minute Quad: Beatty, Sprague River East, Buttes of the Gods, Sprague River West.

Vertical Datum: National Geodetic Vertical Datum of 1929.

Horizontal Datum: 1927 North American Datum.

KLAMATH ADJUDICATION
CLAIM # 645 PAGE # **023**

Reach boundaries: Sycan River to Trout Creek.
 Plate 4 of 4.

RECEIVED

OCT 01 1999

WATER RESOURCES DEPT.
 SALEM, OREGON

Klamath Basin Water Rights Claim #645
 Department of the Interior Bureau of Indian Affairs
 Reach Name: **Sprague River #5 (SP 5)**
 Scale: 1:24,000 (Amended)

\\Lafayette\Graphics\Projects\GIS\BIA\60177.26\Topo\1117gis3.fh8