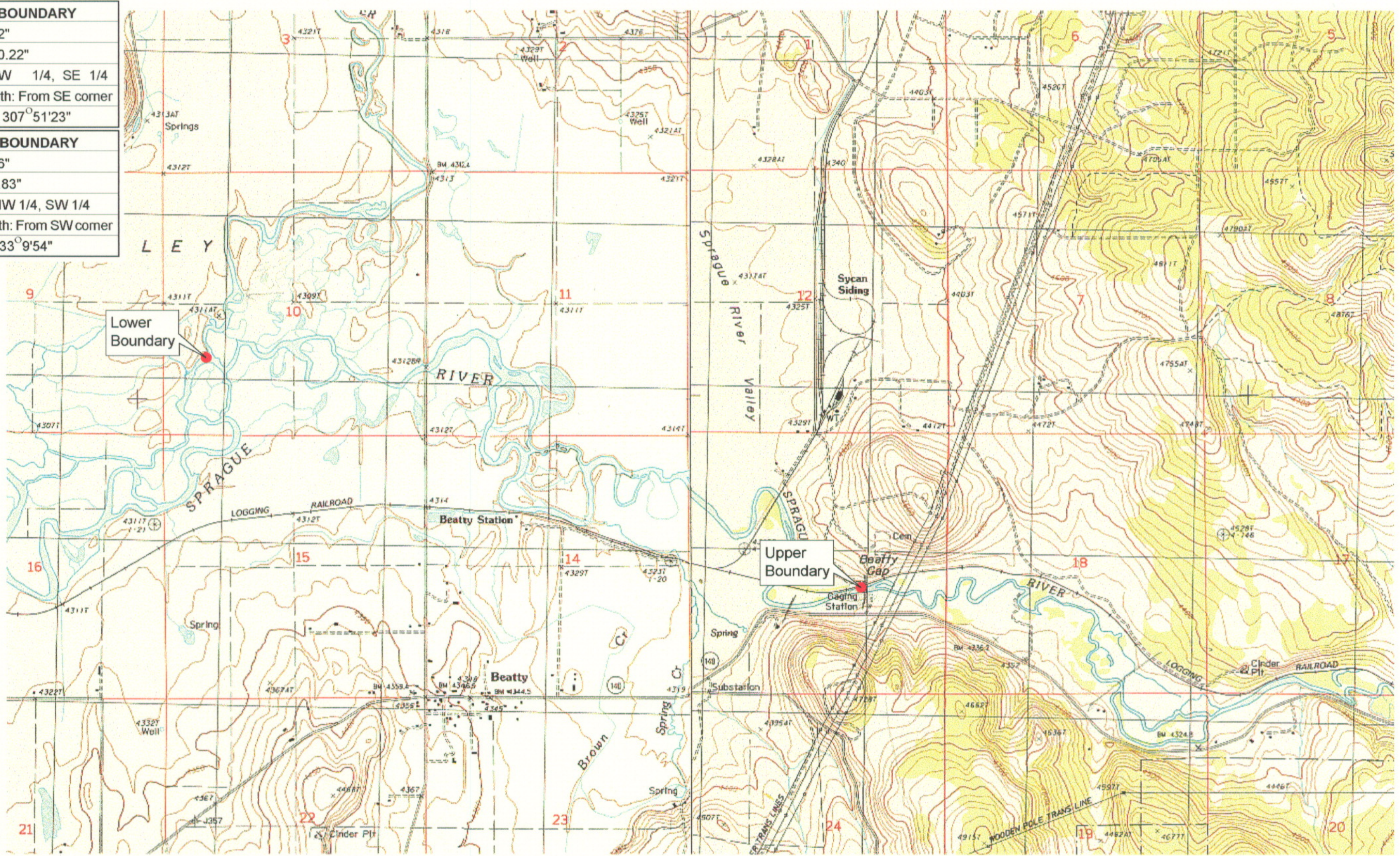


<b>UPPER REACH BOUNDARY</b>
Latitude: 42° 26' 45.02"
Longitude: 121° 14' 10.22"
T 36S, R 12E, S 13, NW 1/4, SE 1/4
Distance/Bearing/Azimuth: From SE corner N 52° 8' 37" W, 807.0m, 307° 51' 23"
<b>LOWER REACH BOUNDARY</b>
Latitude: 42° 27' 38.36"
Longitude: 121° 17' 9.83"
T 36S, R 12E, S 10, NW 1/4, SW 1/4
Distance/Bearing/Azimuth: From SW corner N 33° 9' 54" E, 541.8m, 33° 9' 54"

RECEIVED

MAR 01 1999

WATER RESOURCES DEPT.  
SALEM, OREGON



Source: USGS 7.5 Minute  
Quad: Beatty, Ferguson Mtn.

Vertical Datum: National  
Geodetic Vertical Datum of  
1929.

Horizontal Datum: 1927 North  
American Datum.

**KLAMATH ADJUDICATION**

CLAIM # **646** PAGE # **04**

Reach boundaries: USGS Gage Sprague River near Beatty (11497500) to Sycan River.  
Plate 1 of 1.

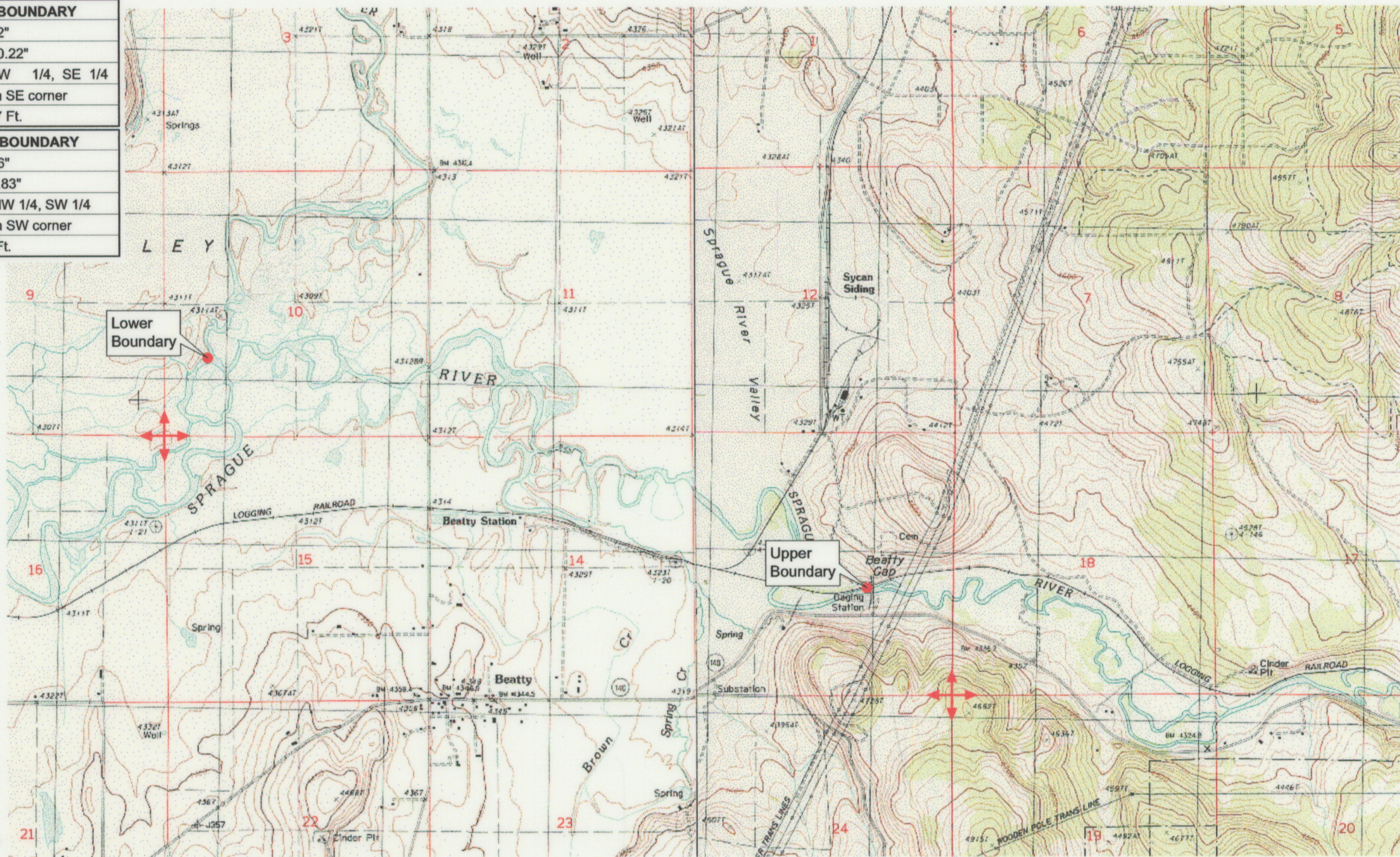
**Klamath Basin Water Rights Claim Map**

Department of the Interior Bureau of Indian Affairs

Reach Name: **Sprague River #6**

Scale: 1:24,000

<b>UPPER REACH BOUNDARY</b>
Latitude: 42° 26' 45.02"
Longitude: 121° 14' 10.22"
T 36S, R 12E, S 13, NW 1/4, SE 1/4
Bearing/Distance: From SE corner N 37° 51' 23" W, 2,647.7 Ft.
<b>LOWER REACH BOUNDARY</b>
Latitude: 42° 27' 38.36"
Longitude: 121° 17' 9.83"
T 36S, R 12E, S 10, NW 1/4, SW 1/4
Bearing/Distance: From SW corner N 33° 9' 54" E, 1,777.7 Ft.



Source: USGS 7.5 Minute  
Quad: Beatty, Ferguson Mtn.

Vertical Datum: National  
Geodetic Vertical Datum of  
1929.  
Horizontal Datum: 1927 North  
American Datum.

**KLAMATH ADJUDICATION**  
**CLAIM # 646 PAGE # 015**

Reach boundaries: USGS Gage Sprague River near Beatty (11497500) to Sycan River.  
Plate 1 of 1.

OCT 01 1999

WATER RESOURCES DEPT.  
SALEM, OREGON

**Klamath Basin Water Rights Claim #646**  
Department of the Interior Bureau of Indian Affairs  
Reach Name: **Sprague River #6 (SP 6)**  
Scale: 1:24,000 (Amended)

\\Lafayette\Graphics\Projects\GIS\BIA\60177.26\Topo\1117gis3.fn8