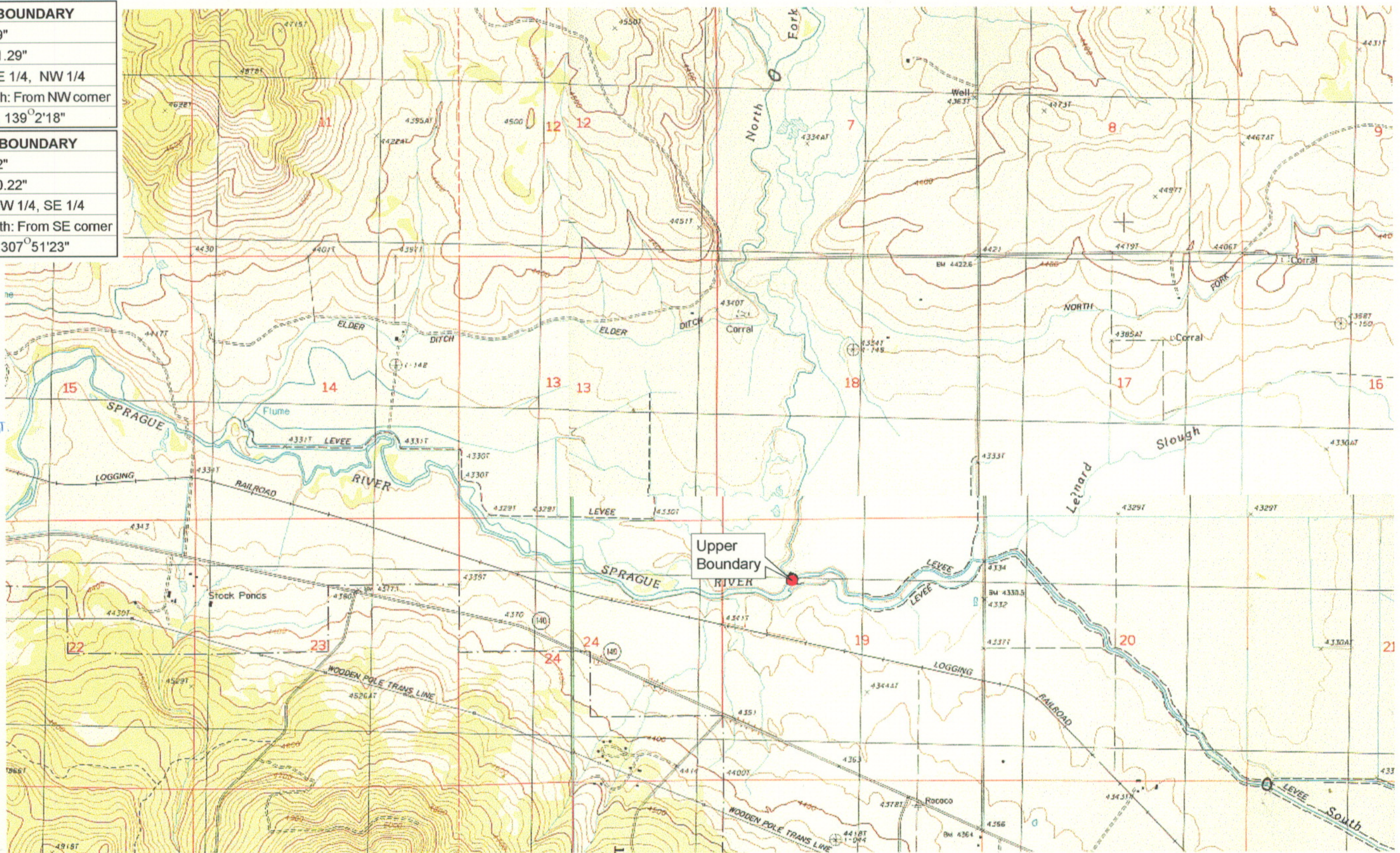


UPPER REACH BOUNDARY
Latitude: 42° 26' 18.89"
Longitude: 121° 06' 31.29"
T 36S, R 14E, S 19, NE 1/4, NW 1/4
Distance/Bearing/Azimuth: From NW corner S 40° 57' 42" E, 610.1m, 139° 2' 18"
LOWER REACH BOUNDARY
Latitude: 42° 26' 45.02"
Longitude: 121° 14' 10.22"
T 36S, R 12E, S 13, NW 1/4, SE 1/4
Distance/Bearing/Azimuth: From SE corner N 52° 8' 37" W, 807.0m, 307° 51' 23"



RECEIVED

MAR 01 1999

WATER RESOURCES DEPT.
SALEM, OREGON



Source: USGS 7.5 Minute
Quad: Ferguson Mtn., Bly.

Vertical Datum: National
Geodetic Vertical Datum of
1929.

Horizontal Datum: 1927 North
American Datum.

KLAMATH ADJUDICATION

CLAIM 647 PAGE #

05

Reach boundaries: North Fork/South Fork Sprague River confluence to Kirk Spring.
Plate 1 of 2.

Klamath Basin Water Rights Claim Map

Department of the Interior Bureau of Indian Affairs

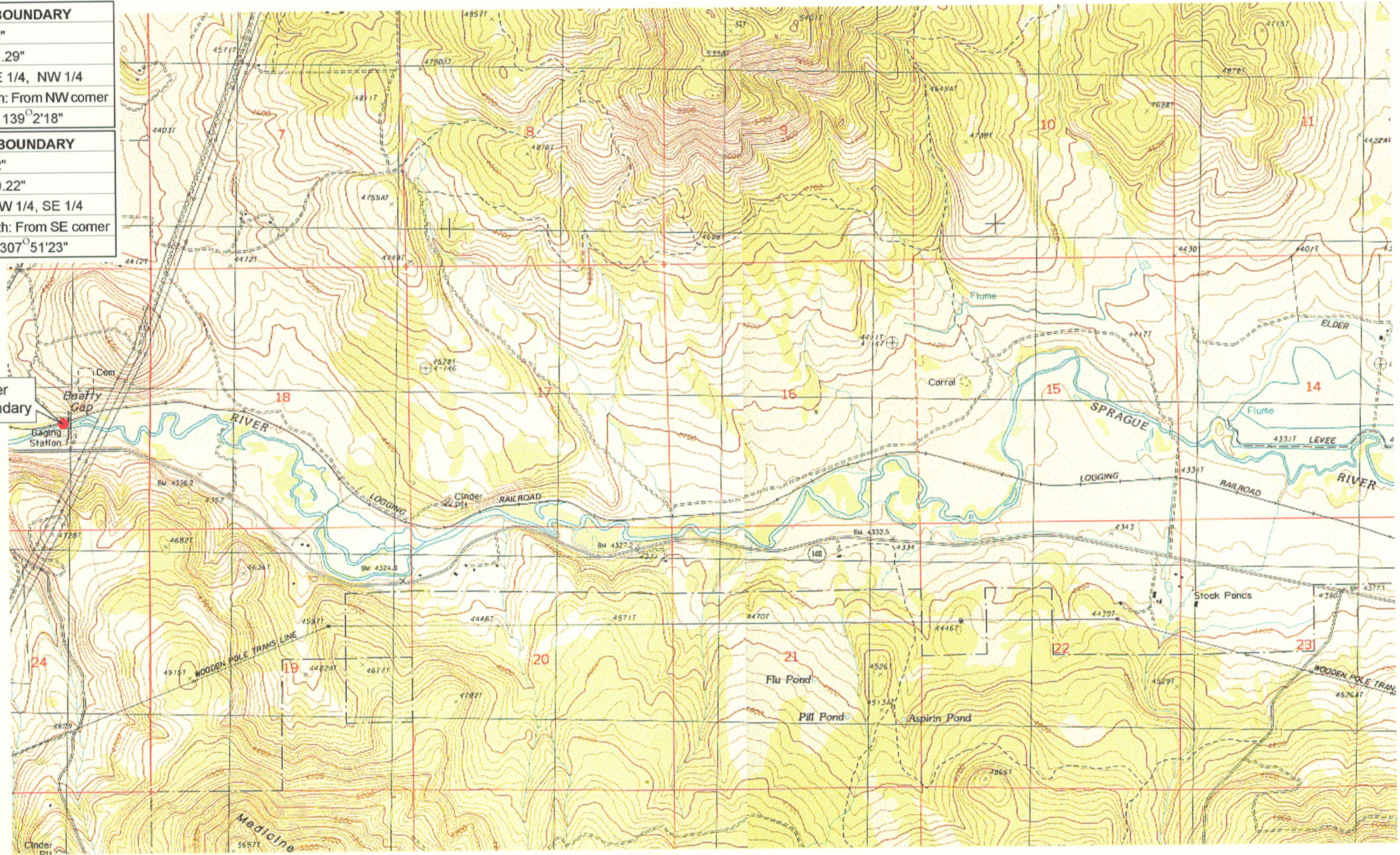
Reach Name: **Sprague River #7**

Scale: 1:24,000

UPPER REACH BOUNDARY	
Latitude:	42° 26' 18.89"
Longitude:	121° 06' 31.29"
T 36S, R 14E, S 19, NE 1/4, NW 1/4	
Distance/Bearing/Azimuth: From NW corner S 40° 57' 42" E, 610.1m, 139° 2' 18"	
LOWER REACH BOUNDARY	
Latitude:	42° 26' 45.02"
Longitude:	121° 14' 10.22"
T 36S, R 12E, S 13, NW 1/4, SE 1/4	
Distance/Bearing/Azimuth: From SE corner N 52° 8' 37" W, 807.0m, 307° 51' 23"	

RECEIVED
MAR 01 1999
WATER RESOURCES DEPT
SALEM, OREGON

Lower Boundary



Source: USGS 7.5 Minute
Quad: Ferguson Mtn., Bly.
Vertical Datum: National
Geodetic Vertical Datum of
1929.
Horizontal Datum: 1927 North
American Datum.

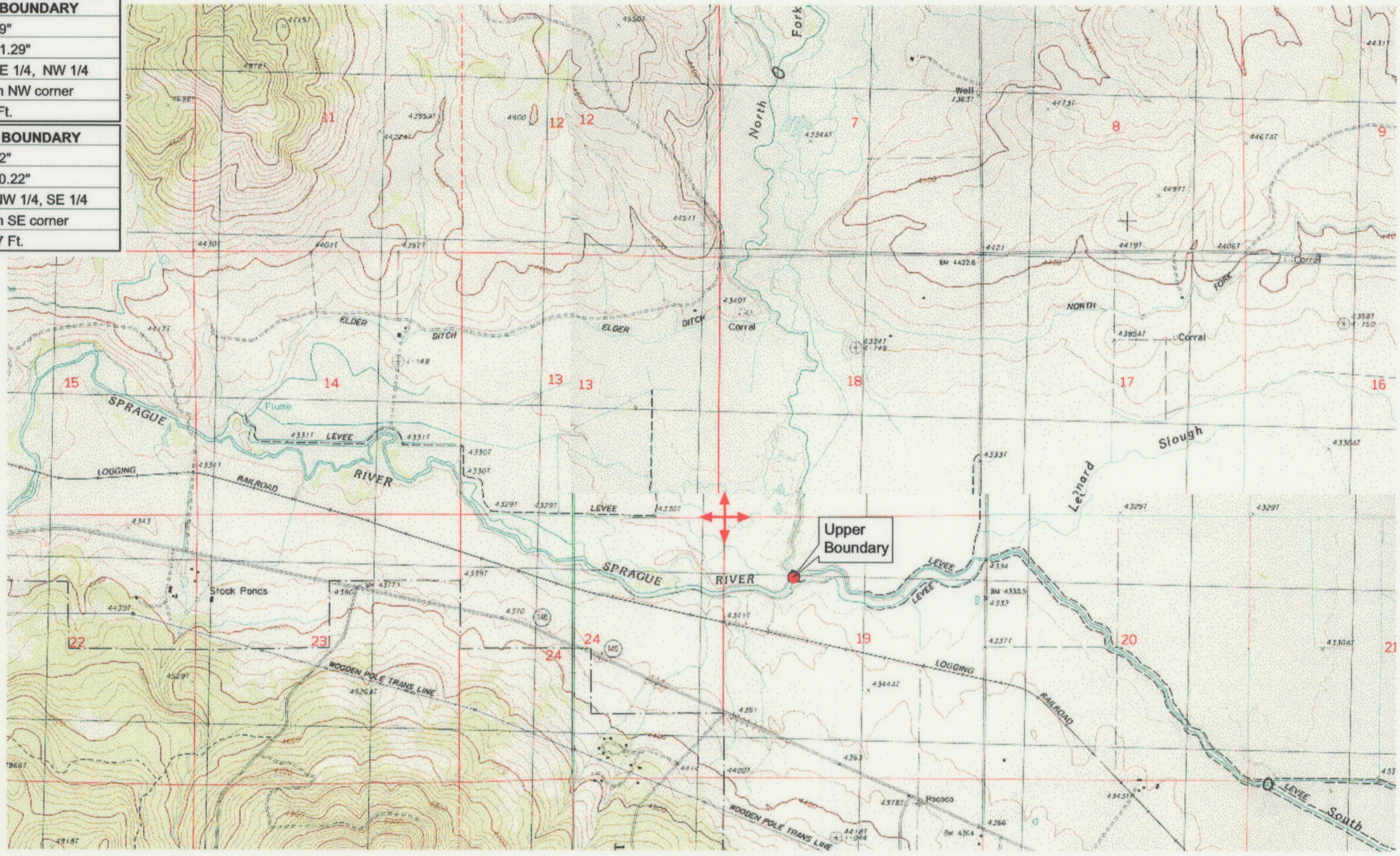
KLAMATH ADJUDICATION
CLAIM **647** PAGE # **06**

Reach boundaries: North Fork/South Fork Sprague River confluence to Kirk Spring.
Plate 2 of 2.

Klamath Basin Water Rights Claim Map
Department of the Interior Bureau of Indian Affairs
Reach Name: **Sprague River #7**
Scale: 1:24,000

f:\60177.26\master\graphics\1117gis3.fh5

UPPER REACH BOUNDARY
Latitude: 42° 26' 18.89"
Longitude: 121° 06' 31.29"
T 36S, R 14E, S 19, NE 1/4, NW 1/4
Bearing/Distance: From NW corner
S 49° 2' 18" E, 2,001.6 Ft.
LOWER REACH BOUNDARY
Latitude: 42° 26' 45.02"
Longitude: 121° 14' 10.22"
T 36S, R 12E, S 13, NW 1/4, SE 1/4
Bearing/Distance: From SE corner
N 37° 51' 23" W, 2,647.7 Ft.



Source: USGS 7.5 Minute Quad: Ferguson Mtn., Bly.
 Vertical Datum: National Geodetic Vertical Datum of 1929.
 Horizontal Datum: 1927 North American Datum.

KLAMATH ADJUDICATION
 CLAIM # **647** PAGE # **017**

RECEIVED
 OCT 01 1999

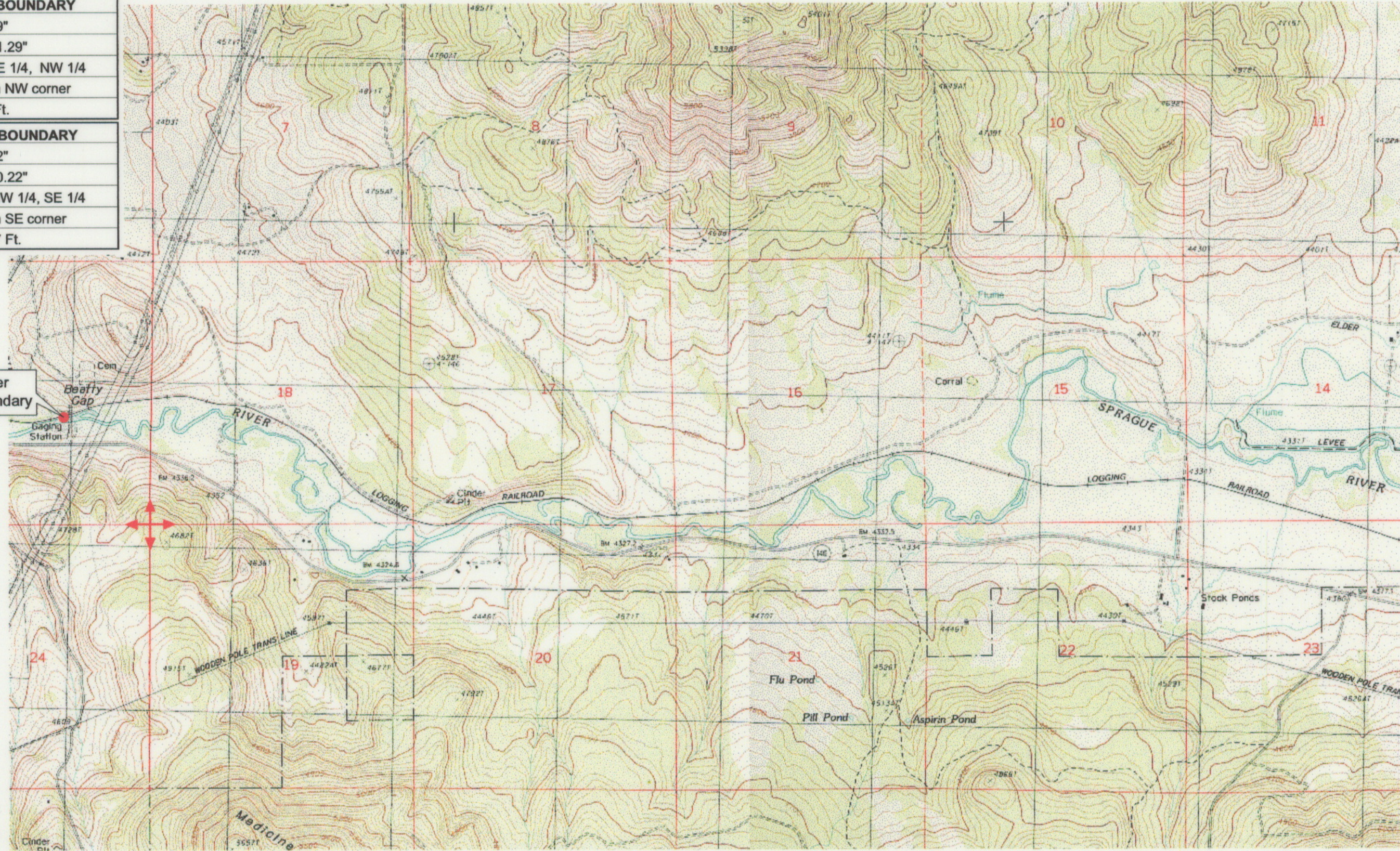
WATER RESOURCES DEPT.
 SALEM, OREGON

Reach boundaries: North Fork/South Fork Sprague River confluence to Kirk Spring.
 Plate 1 of 2.

Klamath Basin Water Rights Claim #647
 Department of the Interior Bureau of Indian Affairs
 Reach Name: **Sprague River #7 (SP 7)**
 Scale: 1:24,000 (Amended)

\\Lafayette\Graphics\Projects\GIS\BIA\60177.26\Topo\1117gis3.fh8

UPPER REACH BOUNDARY
Latitude: 42° 26' 18.89"
Longitude: 121° 06' 31.29"
T 36S, R 14E, S 19, NE 1/4, NW 1/4
Bearing/Distance: From NW corner
S 49° 2' 18" E, 2,001.6 Ft.
LOWER REACH BOUNDARY
Latitude: 42° 26' 45.02"
Longitude: 121° 14' 10.22"
T 36S, R 12E, S 13, NW 1/4, SE 1/4
Bearing/Distance: From SE corner
N 37° 51' 23" W, 2,647.7 Ft.



Source: USGS 7.5 Minute Quad: Ferguson Mtn., Bly.
 Vertical Datum: National Geodetic Vertical Datum of 1929.
 Horizontal Datum: 1927 North American Datum.

KLAMATH ADJUDICATION RECEIVED
CLAIM # 647 PAGE # 018 OCT 01 1999
 WATER RESOURCES DEPT. SALEM, OREGON

Reach boundaries: North Fork/South Fork Sprague River confluence to Kirk Spring.
 Plate 2 of 2.

Klamath Basin Water Rights Claim #647
 Department of the Interior Bureau of Indian Affairs
 Reach Name: **Sprague River #7 (SP 7)**
 Scale: 1:24,000 (Amended)
 \\Lafayette\Graphics\Projects\GIS\BIA\60177.26\Topo\1117gis3.th8