

RECEIVED

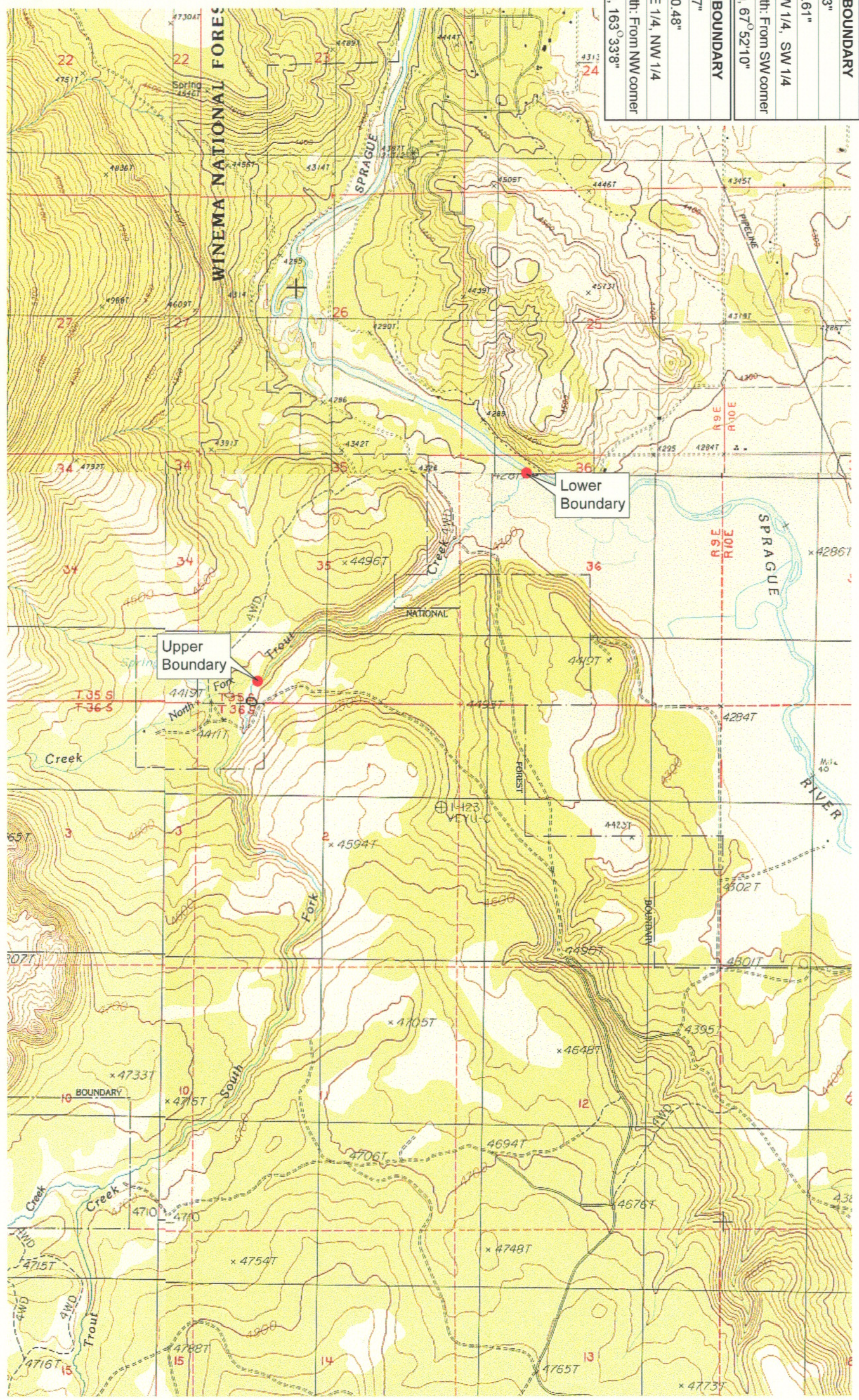
MAR 01 1999

WATER RESOURCES DEPT
SALEM, OREGON

UPPER REACH BOUNDARY
Latitude: 42° 29' 13.53"
Longitude: 121° 37' 6.61"
T 35S, R 9E, S 35, SW 1/4, SW 1/4
Distance/Bearing/Azimuth: From SW corner N 67° 52' 10" E, 373.8m, 67° 52' 10"
LOWER REACH BOUNDARY
Latitude: 42° 29' 59.77"
Longitude: 121° 35' 50.48"
T 35S, R 9E, S 36, NE 1/4, NW 1/4
Distance/Bearing/Azimuth: From NW corner S 16° 26' 52" E, 464.7m, 163° 33' 8"



Source: USGS 7.5 Minute
Quad: Sprague River West
Vertical Datum: National
Geodetic Vertical Datum of
1929
Horizontal Datum: 1927 North
American Datum.



KLAMATH ADJUDICATION
CLAIM # **648** PAGE # **04**

Reach: Trout Creek
Plate 1 of 1.

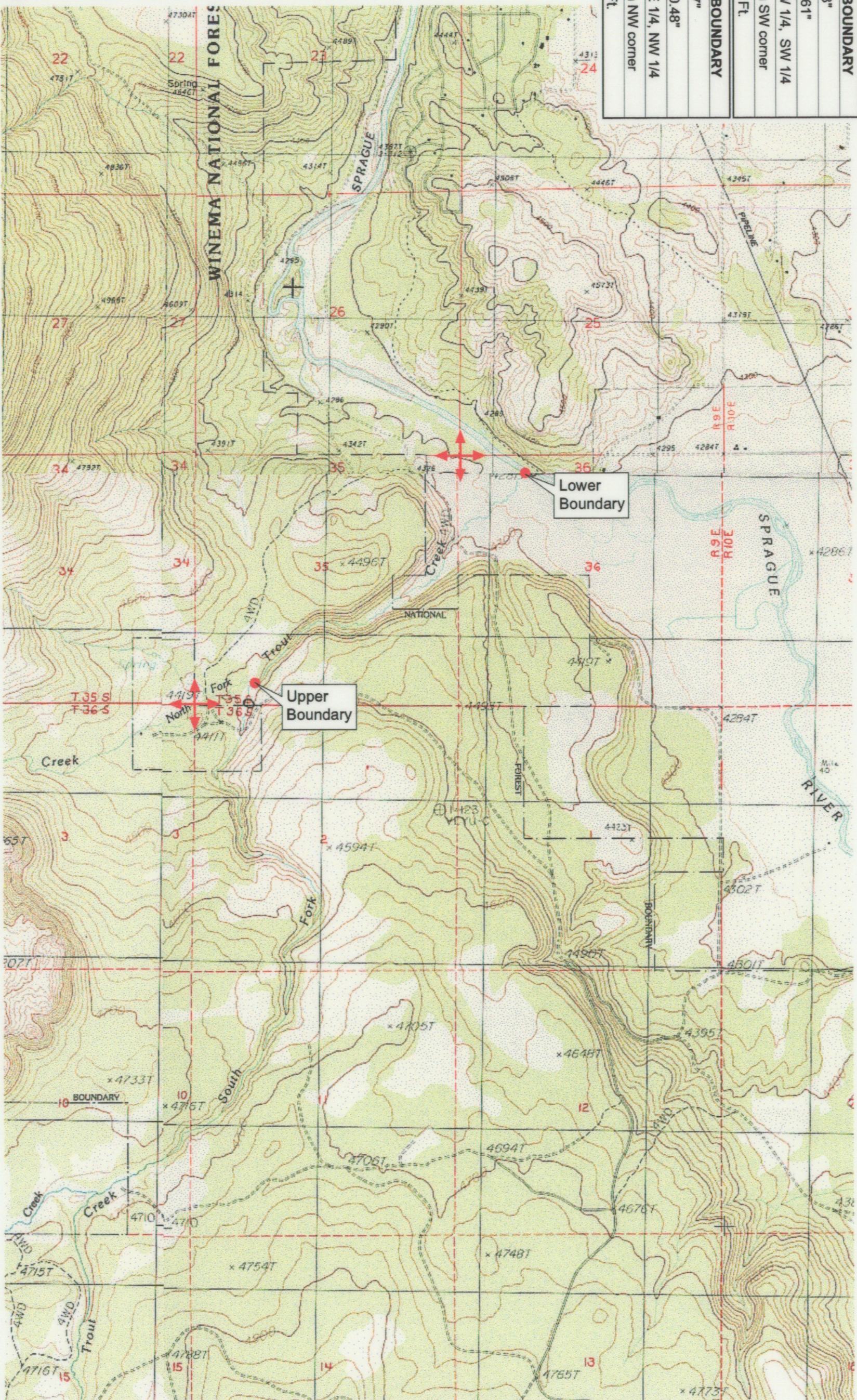
Klamath Basin Water Rights Claim Map
Department of the Interior Bureau of Indian Affairs
Reach Name: **Sprague River #8**
Scale: 1:24,000

f:\60177.26\master\graphics\1117gls3.mxd

UPPER REACH BOUNDARY
Latitude: 42° 29' 13.53"
Longitude: 121° 37' 6.61"
T 35S, R 9E, S 35, SW 1/4, SW 1/4
Bearing/Distance: From SW corner N 67° 52' 10" E, 1,226.5 Ft.
LOWER REACH BOUNDARY
Latitude: 42° 29' 59.77"
Longitude: 121° 35' 50.48"
T 35S, R 9E, S 36, NE 1/4, NW 1/4
Bearing/Distance: From NW corner S 73° 33' 8" E, 1,524.6 Ft.



Source: USGS 7.5 Minute Quad: Sprague River West, Buttes of the Gods.
Vertical Datum: National Geodetic Vertical Datum of 1929.
Horizontal Datum: 1927 North American Datum.



KLAMATH ADJUDICATION
CLAIM # **648** PAGE # **015**

Reach: Trout Creek.
Plate 1 of 1.

RECEIVED

OCT 01 1999

WATER RESOURCES DEPT.
SALEM, OREGON

Klamath Basin Water Rights Claim #648

Department of the Interior Bureau of Indian Affairs

Reach Name: Sprague River #8 (SP 8)

Scale: 1:24,000 (Amended)

\\latryet\data\Graphics\Proj\p02\GIS\BIA\60177_26\Topo\1171gus3.mxd