

**UPPER REACH BOUNDARY**

Latitude: 42° 24' 45.63"

Longitude: 121° 20' 28.78"

T 36S, R 12E, S30, SE 1/4, SW 1/4

Distance/Bearing/Azimuth: From SW corner N 81° 35' 59" E, 608.7m, 81° 35' 59"

**LOWER REACH BOUNDARY**

Latitude: 42° 27' 25.99"

Longitude: 121° 21' 32.26"

T 36S, R 11E, S 12, SE 1/4, SW 1/4

Distance/Bearing/Azimuth: From SW corner N 49° 48' 28" E, 576.8m, 49° 48' 28"

**RECEIVED**

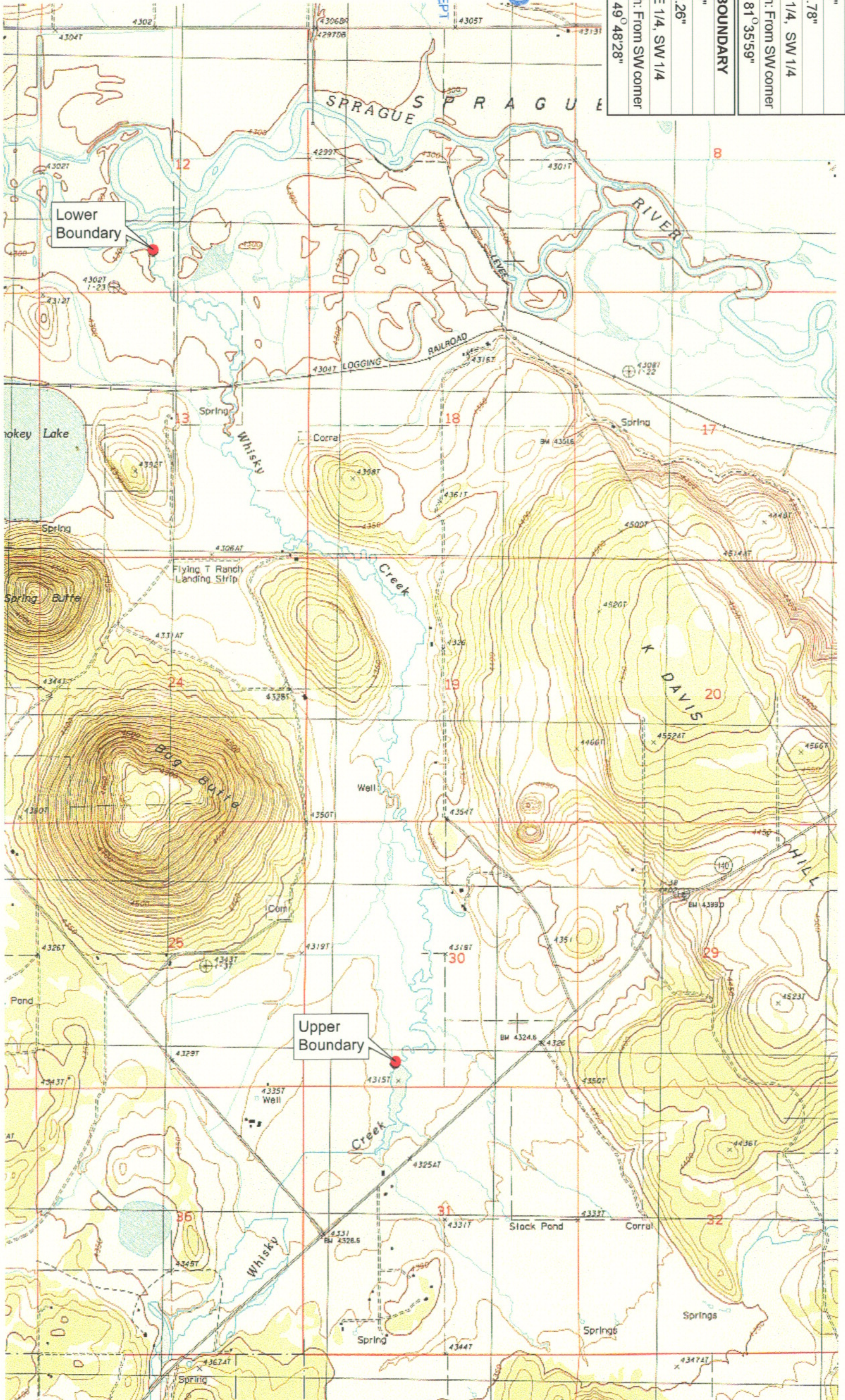
MAR 01 1999

WATER RESOURCES DEPT  
SALEM, OREGON



Source: USGS 7.5 Minute  
Quad: Beatty.

Vertical Datum: National  
Geodetic Vertical Datum of  
1929.  
Horizontal Datum: 1927 North  
American Datum.



**KLAMATH ADJUDICATION**

**CLAIM # 649 PAGE # 04**

Reach: Whisky Creek.  
Plate 1 of 1.

**Klamath Basin Water Rights Claim Map**

Department of the Interior Bureau of Indian Affairs

Reach Name: **Sprague River #9**

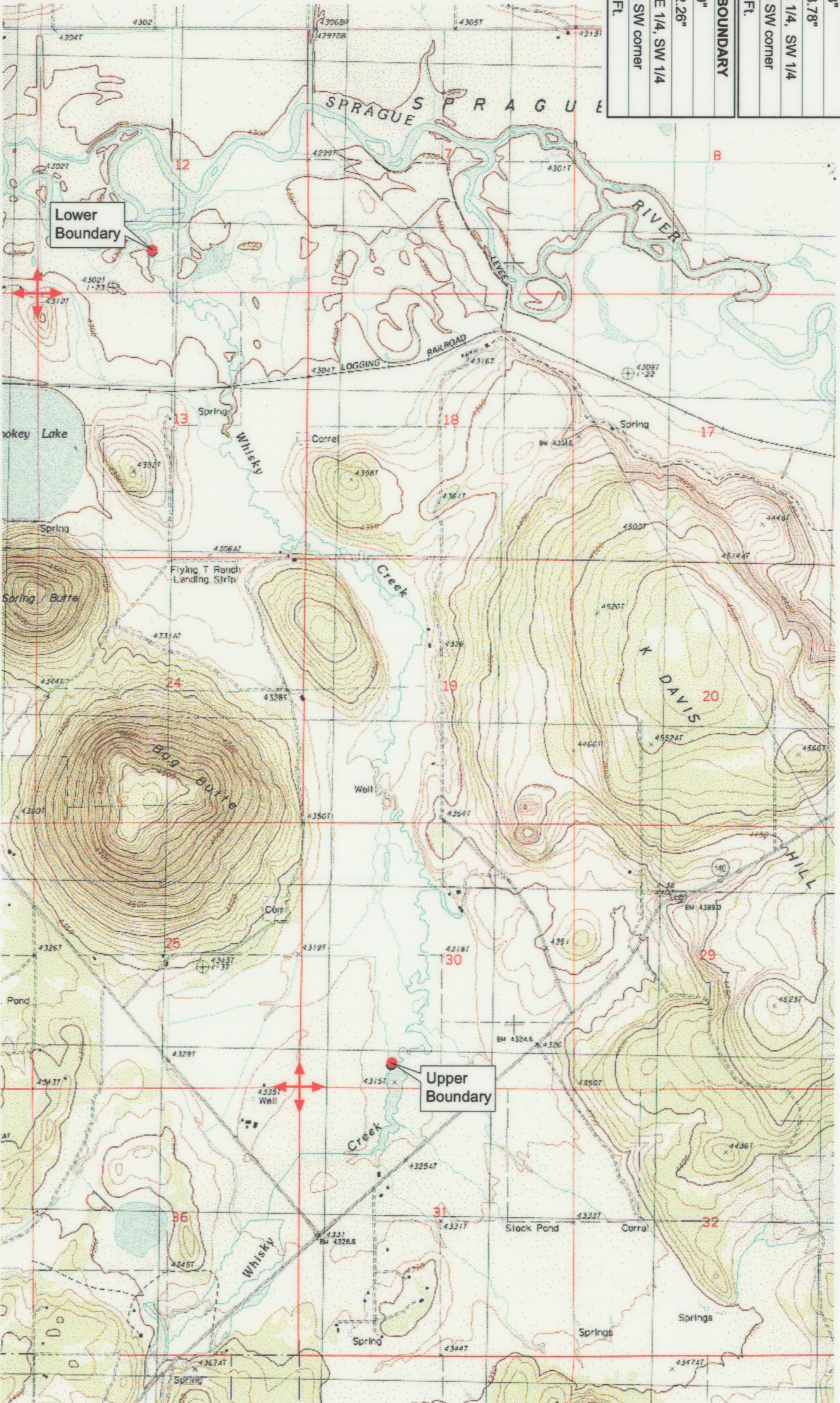
Scale: 1:24,000

f:\60177.26\master\graphics\1117gns3.mxd

<b>UPPER REACH BOUNDARY</b>	
Latitude:	42° 24' 45.63"
Longitude:	121° 20' 28.78"
T 36S, R 12E, S30, SE 1/4, SW 1/4	
Bearing/Distance:	From SW corner N 81° 35' 59" E, 1,997.1 Ft.
<b>LOWER REACH BOUNDARY</b>	
Latitude:	42° 27' 25.99"
Longitude:	121° 21' 32.26"
T 36S, R 11E, S 12, SE 1/4, SW 1/4	
Bearing/Distance:	From SW corner N 49° 48' 28" E, 1,892.3 Ft.



Source: USGS 7.5 Minute  
 Quad: Beatty  
 Vertical Datum: National  
 Geodetic Vertical Datum of  
 1929.  
 Horizontal Datum: 1927 North  
 American Datum.



**KLAMATH ADJUDICATION**  
**CLAIM # 649** PAGE # **013**

Reach: Whiskey Creek.  
 Plate 1 of 1.

**RECEIVED**

OCT 01 1999  
 WATER RESOURCES DEPT.  
 SALEM, OREGON

Klamath Basin Water Rights Claim #649  
 Department of the Interior Bureau of Indian Affairs  
 Reach Name: Sprague River #9 (SP 9)  
 Scale: 1:24,000  
 (Amended)

\\lafayette\geographic\Projects\GIS\BIA\60177\261\Topo\1117\gus3.mxd