

UPPER REACH BOUNDARY	
Latitude:	42° 30' 51.58"
Longitude:	121° 07' 10.54"
T 35S, R 13E, S 25, NW 1/4, NE 1/4	
Distance/Bearing/Azimuth: From NE corner	S 88° 53' 52" W, 509.9m, 268° 53' 52"
LOWER REACH BOUNDARY	
Latitude:	42° 27' 58.93"
Longitude:	121° 06' 34.35"
T 36S, R 14E, S 7, SW 1/4, NW 1/4	
Distance/Bearing/Azimuth: From SW corner	N 44° 3' 42" E, 605.8m, 44° 3' 42"

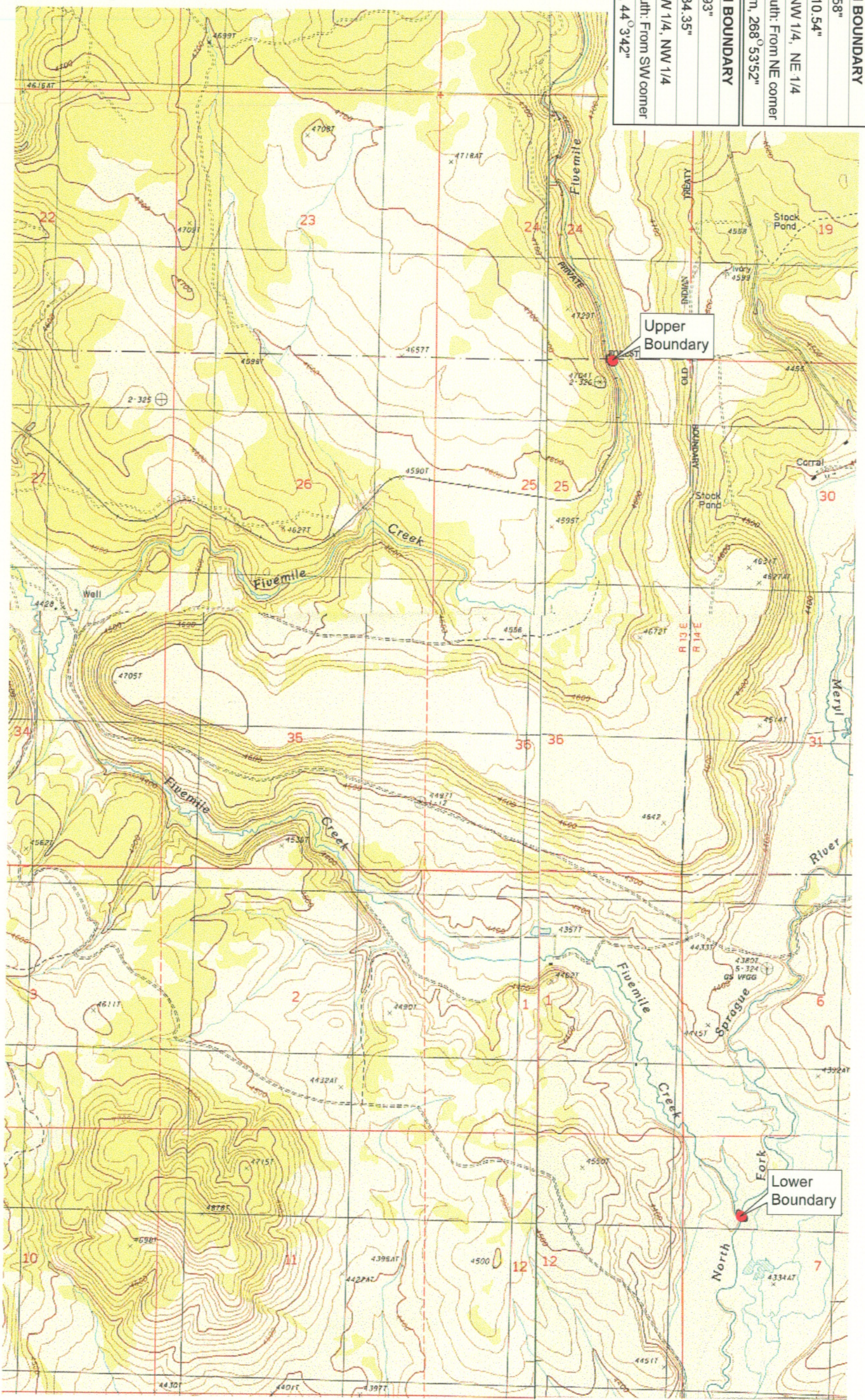
RECEIVED

MAR 01 1999

WATER RESOURCES DEPT.
SALEM, OREGON



Source: USGS 7.5 Minute
Quad: Bly, Rodeo Butte, Poncha
Butte, Ferguson Mtn.
Vertical Datum: National
Geodetic Vertical Datum of
1929
Horizontal Datum: 1927 North
American Datum.



KLAMATH ADJUDICATION
CLAIM # 652 PAGE # **04**

Reach: Fivemile Creek (Lower Forest Service boundary to North Fork Sprague River).
Plate 1 of 1.

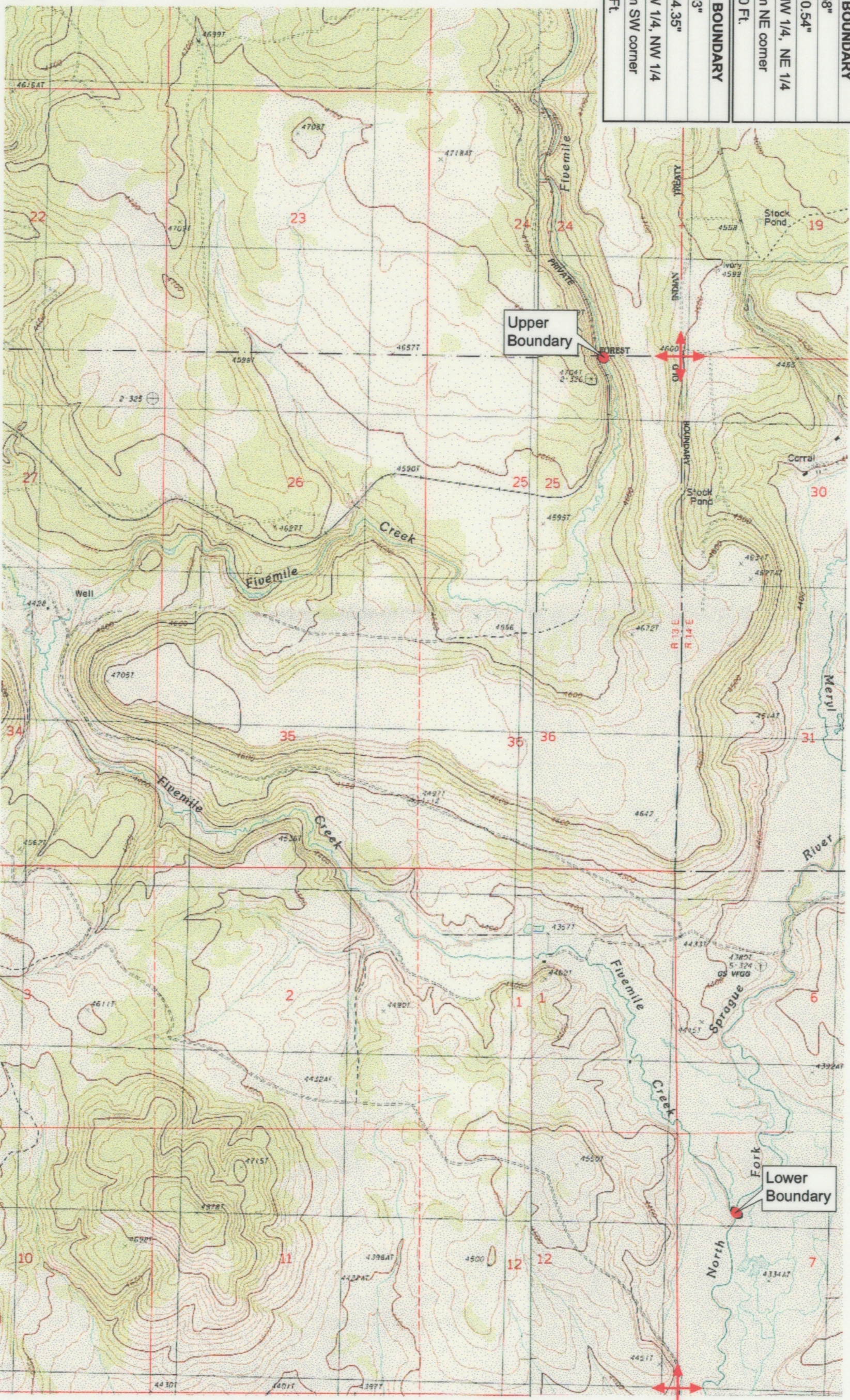
Klamath Basin Water Rights Claim Map
Department of the Interior Bureau of Indian Affairs
Reach Name: **Sprague River #12**
Scale: 1:24,000

f:\90177_26\master\graphics\1117g1s3.mxd

UPPER REACH BOUNDARY	
Latitude:	42° 30' 51.58"
Longitude:	121° 07' 10.54"
T 36S, R 13E, S 25, NW 1/4, NE 1/4	
Bearing/Distance:	From NE corner S 88° 53' 52" W, 1,673.0 Ft.
LOWER REACH BOUNDARY	
Latitude:	42° 27' 58.93"
Longitude:	121° 06' 34.35"
T 36S, R 14E, S 7, SW 1/4, NW 1/4	
Bearing/Distance:	From SW corner N 44° 3' 42" E, 1,987.8 Ft.



Source: USGS 7.5 Minute
 Quad: Bly, Rodeo Butte, Ponina
 Butte, Ferguson Mtn.
 Vertical Datum: National
 Geodetic Vertical Datum of
 1929.
 Horizontal Datum: 1927 North
 American Datum.



KLAMATH ADJUDICATION
 CLAIM # **6521** PAGE # **015**

Reach: Fivemile Creek (Lower Forest Service boundary to North Fork Sprague River).
 Plate 1 of 1.

RECEIVED

OCT 01 1999

WATER RESOURCES DEPT.
 SALEM, OREGON

Klamath Basin Water Rights Claim #652
 Department of the Interior Bureau of Indian Affairs
 Reach Name: Sprague River #12 (SP 12)
 Scale: 1:24,000
 (Amended)

\\lafayette\Graphics\Projects\GIS\BIA\60177_26\Topo\1177\gis3.tif8