

UPPER REACH BOUNDARY	
Latitude: 42° 34' 33.14"	
Longitude: 121° 07' 2.86"	
T 34S, R 13E, S 36, SE 1/4, SE 1/4	
Distance/Bearing/Azimuth: From SE corner N 49° 48' 00" W, 519.8m, 310° 12' 00"	
LOWER REACH BOUNDARY	
Latitude: 42° 30' 51.58"	
Longitude: 121° 07' 10.54"	
T 35S, R 13E, S 25, NW 1/4, NE 1/4	
Distance/Bearing/Azimuth: From NE corner S 88° 53' 52" W, 509.9m, 268° 53' 52"	

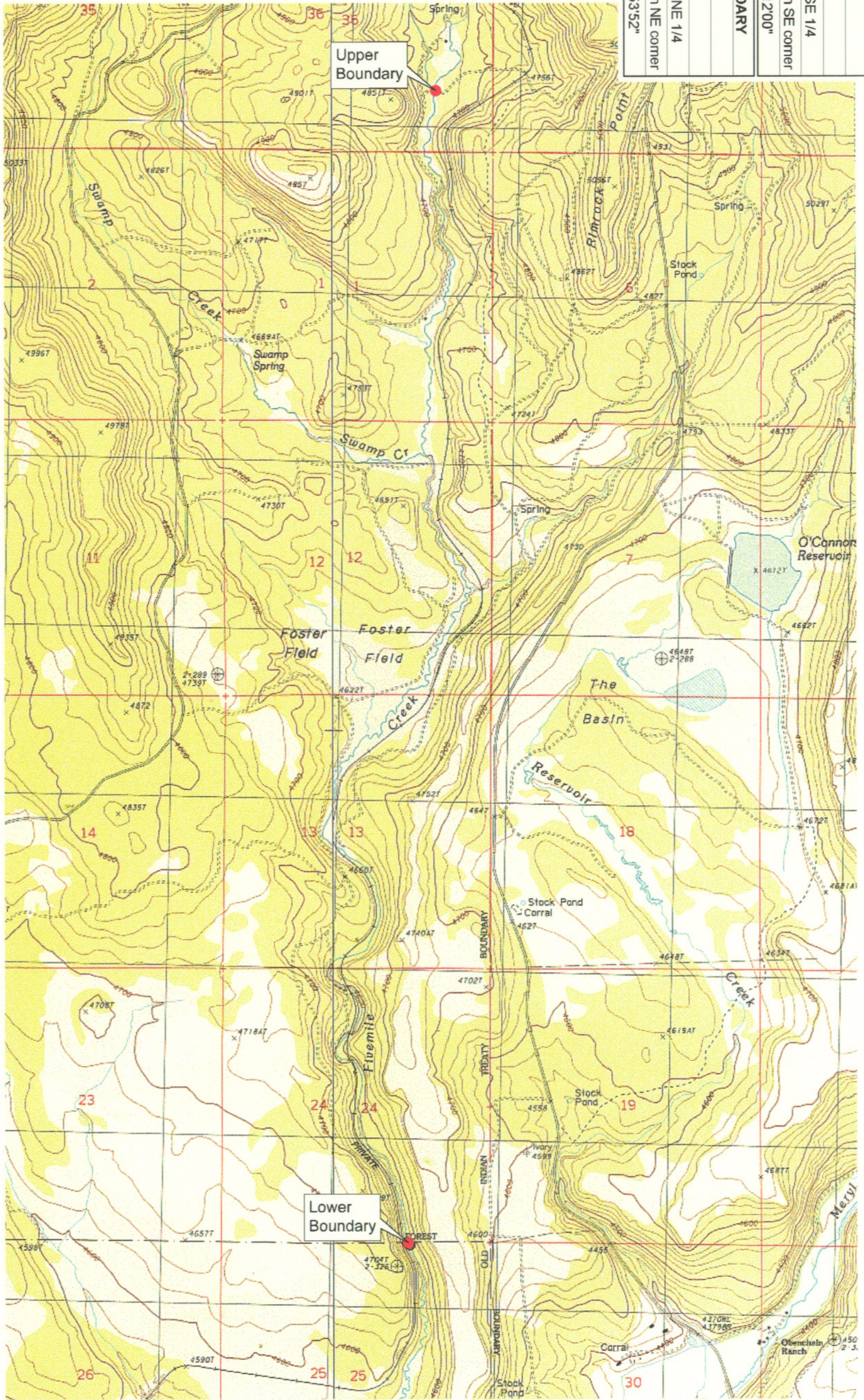
RECEIVED

MAR 01 1999

WALLEN RESOURCES DEPT
SALEM, OREGON



Source: USGS 7.5 Minute
Quad: Rodeo Butte, Ponina
Butte.
Vertical Datum: National
Geodetic Vertical Datum of
1929.
Horizontal Datum: 1927 North
American Datum.



KLAMATH ADJUDICATION
CLAIM # 653 PAGE #
04

Reach: Fivemile Creek (Headwaters to Forest Service boundary).
Plate 1 of 1.

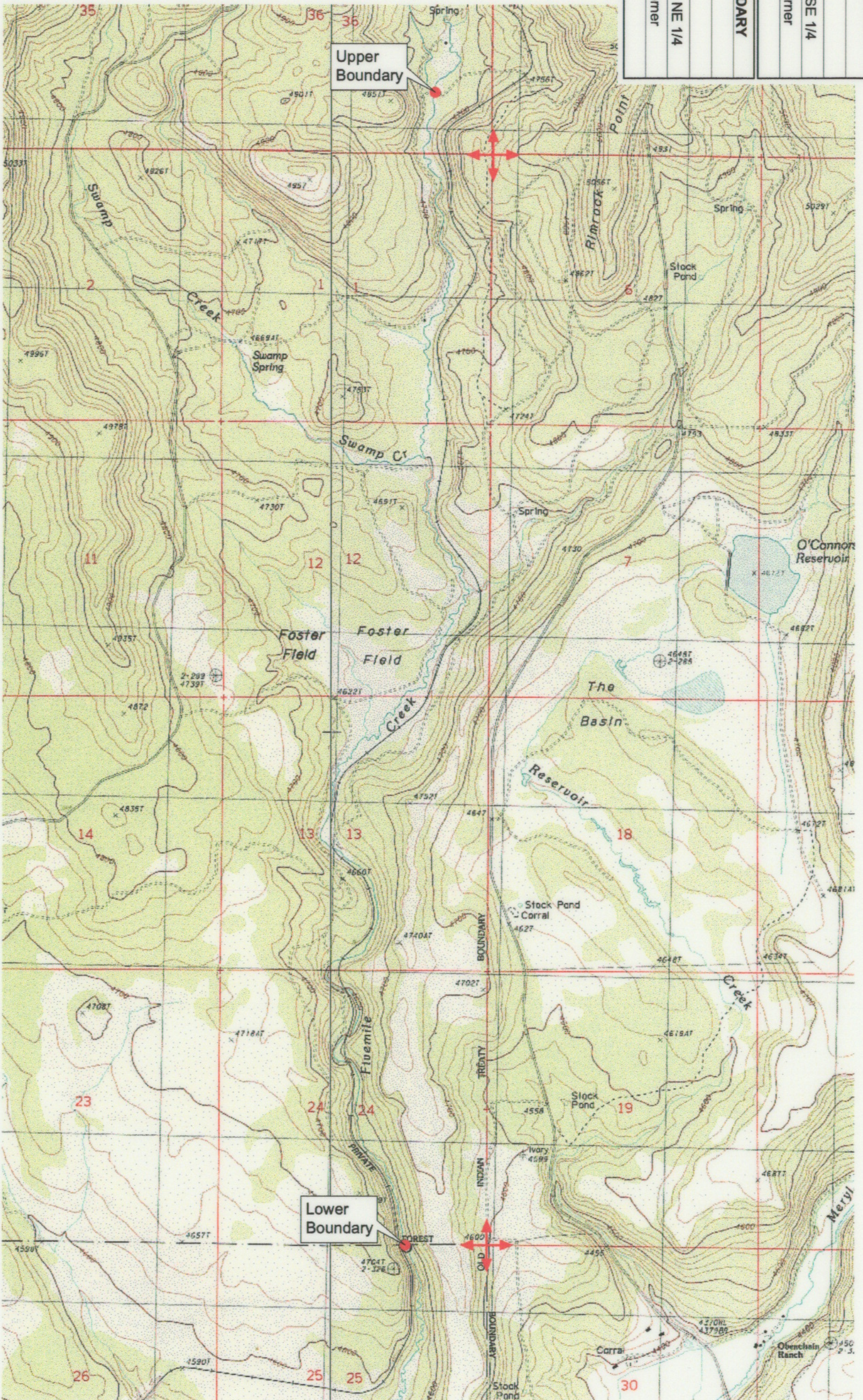
Klamath Basin Water Rights Claim Map
Department of the Interior Bureau of Indian Affairs
Reach Name: **Sprague River #13**
Scale: 1:24,000

F:\60177.26\master\graphics\1117gic3.dwg

UPPER REACH BOUNDARY
Latitude: 42° 34' 33.14"
Longitude: 121° 07' 2.86"
T 34S, R 13E, S 36, SE 1/4, SE 1/4
Bearing/Distance: From SE corner N 40° 12' 00" W, 1,705.3 Ft.
LOWER REACH BOUNDARY
Latitude: 42° 30' 51.58"
Longitude: 121° 07' 10.54"
T 35S, R 13E, S 25, NW 1/4, NE 1/4
Bearing/Distance: From NE corner S 88° 53' 52" W, 1,673.0 Ft.



Source: USGS 7.5 Minute
 Quad: Rodeo Butte, Ponina
 Butte.
 Vertical Datum: National
 Geodetic Vertical Datum of
 1929.
 Horizontal Datum: 1927 North
 American Datum.



KLAMATH ADJUDICATION
 CLAIM # **653** PAGE # **015**

Reach: Fivemile Creek (Headwaters to Forest Service boundary).
 Plate 1 of 1.

RECEIVED

OCT 01 1999

WALTON RESOURCES DEPT.
 SALEM, OREGON

Klamath Basin Water Rights Claim #653
 Department of the Interior Bureau of Indian Affairs
 Reach Name: **Sprague River #13 (SP 13)**
 Scale: 1:24,000
 (Amended)

\\lafayette\Graphics\Projects\GIS\BIA\60177\261\Topo\117\giss3.mxd