

UPPER REACH BOUNDARY	
Latitude:	42° 33' 44.96"
Longitude:	121° 19' 23.75"
T 35S, R 12E, S 5, NE 1/4, SW 1/4	
Distance/Bearing/Azimuth: From SW corner	N 42° 9' 43" E, 636.2m, 42° 9' 43"
LOWER REACH BOUNDARY	
Latitude:	42° 27' 38.36"
Longitude:	121° 17' 9.83"
T 36S, R 12E, S 10, NW 1/4, SW 1/4	
Distance/Bearing/Azimuth: From SW corner	N 33° 9' 54" E, 541.8m, 33° 9' 54"

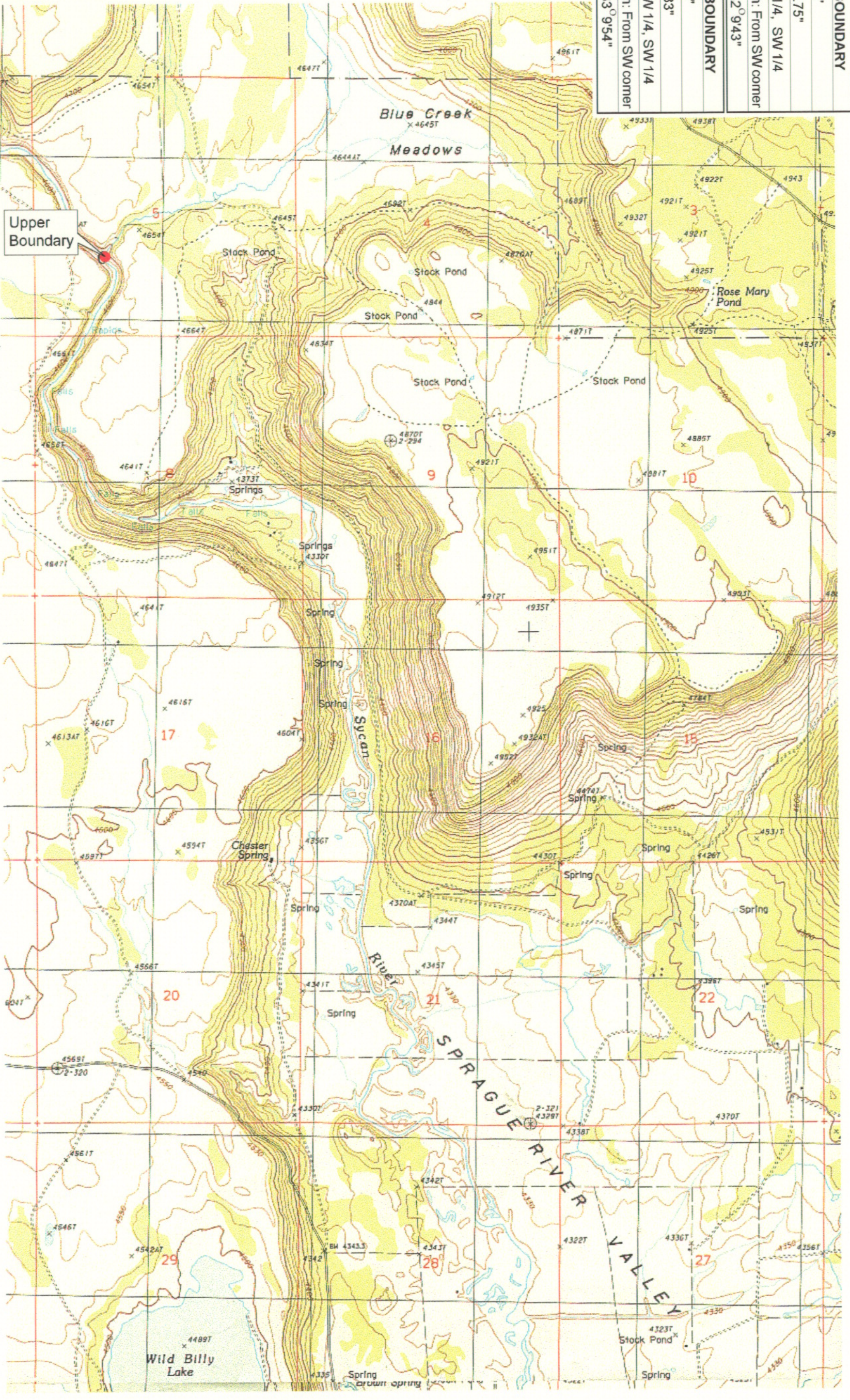
RECEIVED

MAR 01 1999

WATER RESOURCES DEPT.
SALEM, OREGON



Source: USGS 7.5 Minute
Quad: Spoule Mtn., Beatty,
Vertical Datum: National
Geodetic Vertical Datum of
1929.
Horizontal Datum: 1927 North
American Datum.



KLAMATH ADJUDICATION
CLAIM # 658 PAGE #

Reach boundaries: Blue Creek to Sprague River.
Plate 1 of 2.

Klamath Basin Water Rights Claim Map
Department of the Interior Bureau of Indian Affairs
Reach Name: Sycan River #1
Scale: 1:24,000

UPPER REACH BOUNDARY
Latitude: 42° 33' 44.96"
Longitude: 121° 19' 23.75"
T 35S, R 12E, S 5, NE 1/4, SW 1/4
Distance/Bearing/Azimuth: From SW corner N 42° 9' 43" E, 636.2m, 42° 9' 43"
LOWER REACH BOUNDARY
Latitude: 42° 27' 38.36"
Longitude: 121° 17' 9.83"
T 36S, R 12E, S 10, NW 1/4, SW 1/4
Distance/Bearing/Azimuth: From SW corner N 33° 9' 54" E, 541.8m, 33° 9' 54"

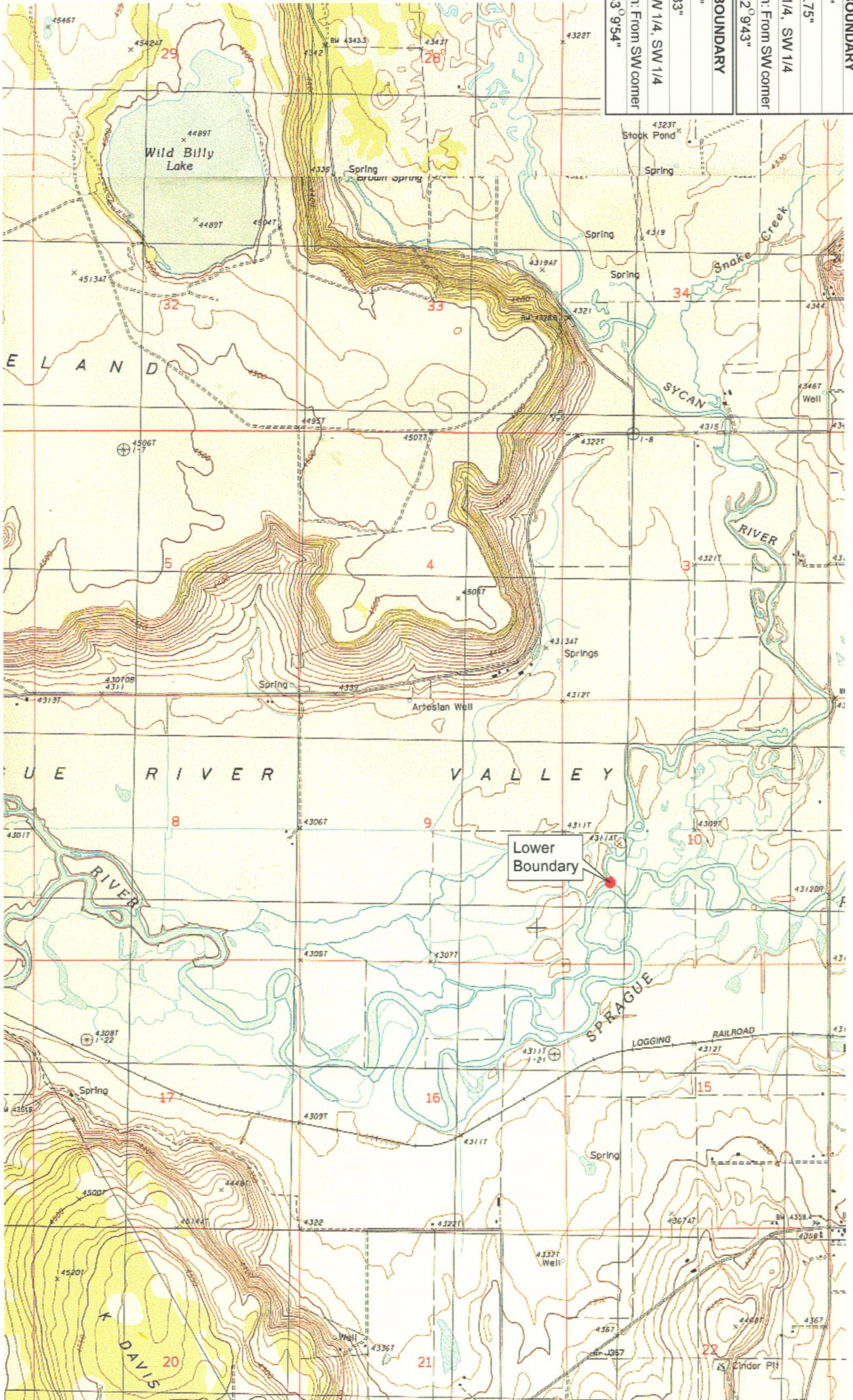
RECEIVED

MAR 01 1999

WATER RESOURCES DEPT
SALEM, OREGON



Source: USGS 7.5 Minute
Quad: Spoodle Mtn., Beatty,
Vertical Datum: National
Geodetic Vertical Datum of
1929,
Horizontal Datum: 1927 North
American Datum.



KLAMATH ADJUDICATION
CLAIM 658 PAGE #
06

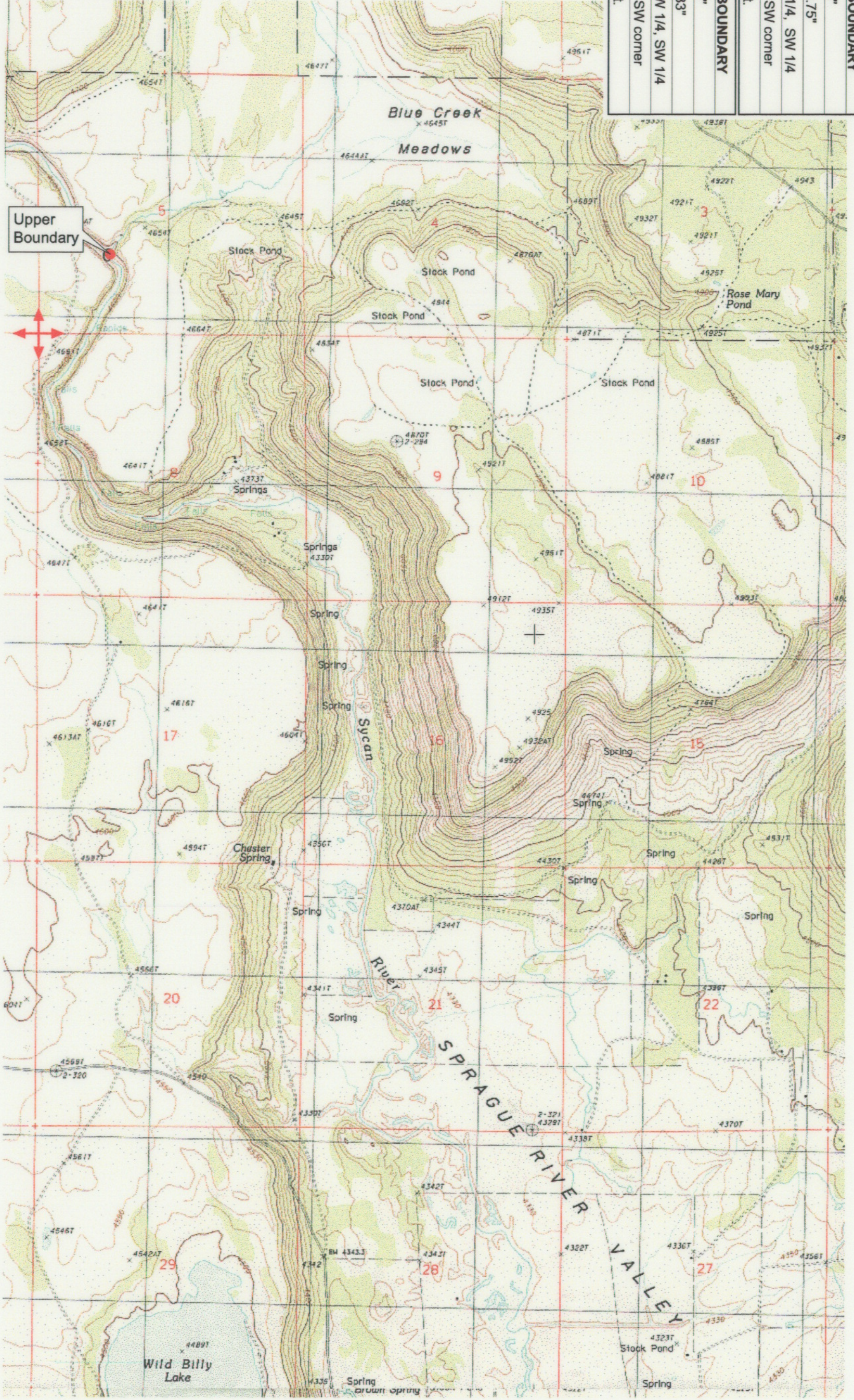
Reach boundaries: Blue Creek to Snake Creek.
Plate 2 of 2.

Klamath Basin Water Rights Claim Map
Department of the Interior Bureau of Indian Affairs
Reach Name: Sycan River #1
Scale: 1:24,000

UPPER REACH BOUNDARY
Latitude: 42° 33' 44.96"
Longitude: 121° 19' 23.75"
T 36S, R 12E, S 5, NE 1/4, SW 1/4
Bearing/Distance: From SW corner N 42° 04' 43" E, 2,087.3 Ft.
LOWER REACH BOUNDARY
Latitude: 42° 27' 38.36"
Longitude: 121° 17' 9.83"
T 36S, R 12E, S 10, NW 1/4, SW 1/4
Bearing/Distance: From SW corner N 33° 09' 54" E, 1,777.7 Ft.



Source: USGS 7.5 Minute
 Quad: Spodue Mtn., Beatty,
 Vertical Datum: National
 Geodetic Vertical Datum of
 1929.
 Horizontal Datum: 1927 North
 American Datum.



KLAMATH ADJUDICATION
 CLAIM # **658**
 PAGE # **017**

Reach boundaries: Blue Creek to Sprague River.
 Plate 1 of 2.

RECEIVED

OCT 01 1999
 WATER RESOURCES DEPT
 SALEM, OREGON

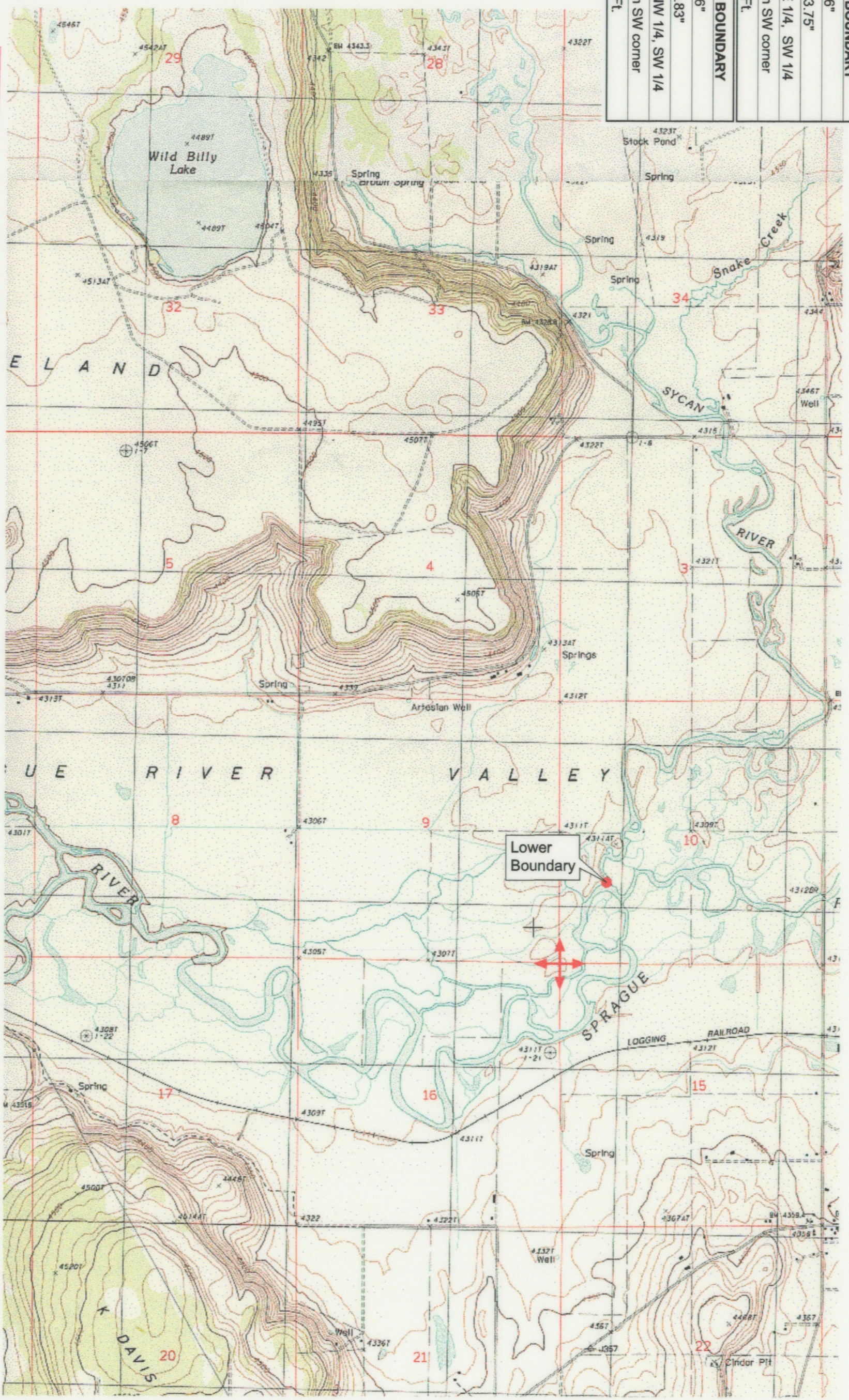
Klamath Basin Water Rights Claim #658
 Department of the Interior Bureau of Indian Affairs
 Reach Name: Sycan River #1 (SY 1)
 Scale: 1:24,000
 (Amended)

\\larry\et\Graphics\Projects\GIS\BIA\60177_26\Topo\117g\is2.frb

UPPER REACH BOUNDARY
Latitude: 42° 33' 44.96"
Longitude: 121° 19' 23.75"
T 35S, R 12E, S 5, NE 1/4, SW 1/4
Bearing/Distance: From SW corner N 42° 09' 43" E, 2,087.3 Ft.
LOWER REACH BOUNDARY
Latitude: 42° 27' 38.36"
Longitude: 121° 17' 9.83"
T 36S, R 12E, S 10, NW 1/4, SW 1/4
Bearing/Distance: From SW corner N 33° 09' 54" E, 1,777.7 Ft.



Source: USGS 7.5 Minute
 Quad: Spodue Mtn., Beatty,
 Vertical Datum: National
 Geodetic Vertical Datum of
 1929
 Horizontal Datum: 1927 North
 American Datum.



KLAMATH ADJUDICATION
 CLAIM # **658** PAGE # **018**

Reach boundaries: Blue Creek to Snake Creek.
 Plate 2 of 2.

RECEIVED

OCT 01 1999

WATER RESOURCES DEPT.
 SALEM, OREGON

Klamath Basin Water Rights Claim #658
 Department of the Interior Bureau of Indian Affairs
 Reach Name: Sycan River #1 (SY 1)
 Scale: 1:24,000
 (Amended)

\\larry\et\Graphics\Projects\GIS\BIA\60177_26\Topo\117gsz.mxd