

UPPER REACH BOUNDARY

Latitude: 42° 39' 3.32"
 Longitude: 121° 21' 24.12"
 T 34S, R 11E, S 1, NW 1/4, SE 1/4
 Distance/Bearing/Azimuth: From SE corner
 N 41° 37' 31" W, 909.6m, 318° 22' 29"

LOWER REACH BOUNDARY

Latitude: 42° 33' 44.96"
 Longitude: 121° 19' 23.75"
 T 35S, R 12E, S 5, NE 1/4, SW 1/4
 Distance/Bearing/Azimuth: From SW corner
 N 42° 9' 43" E, 636.2m, 42° 9' 43"

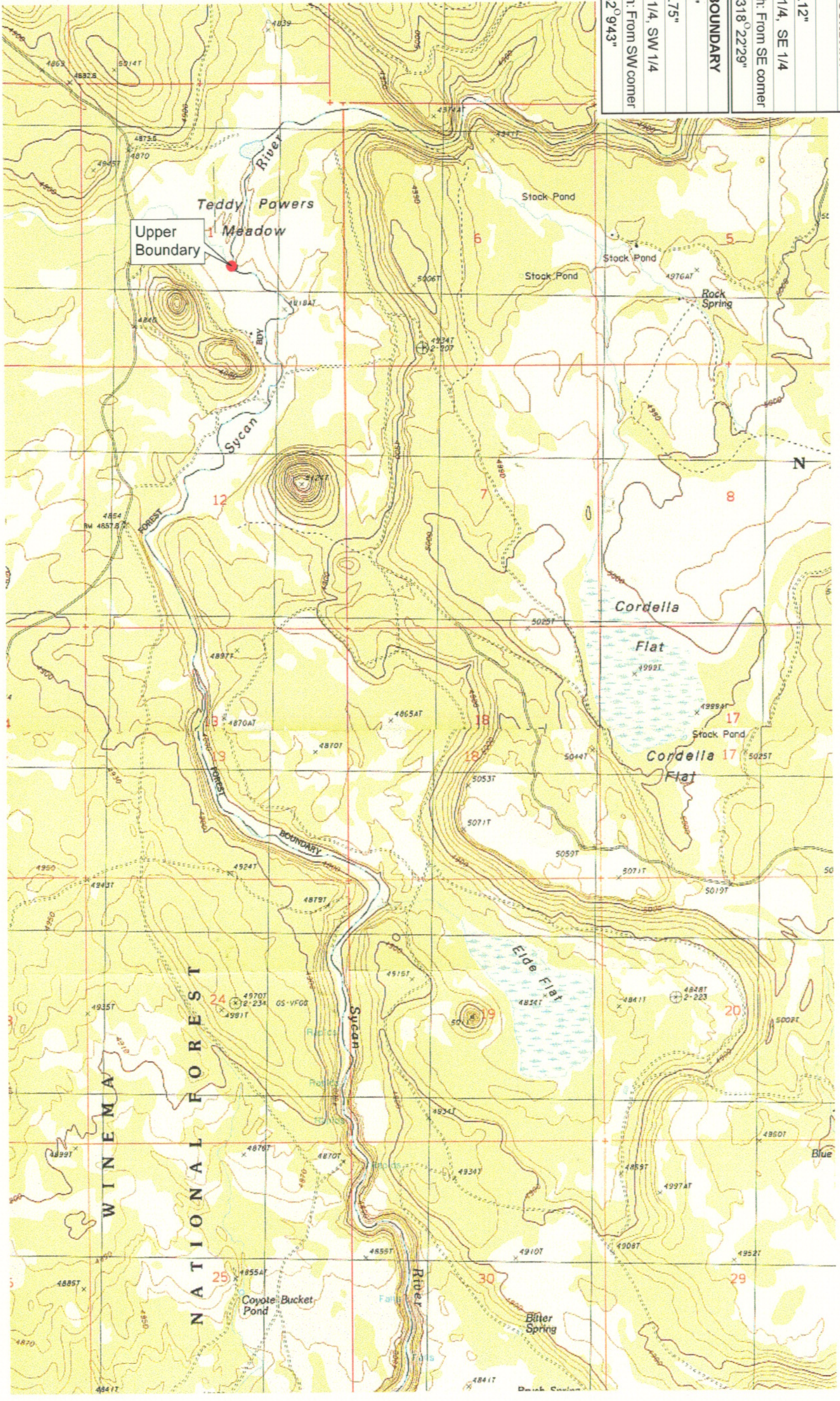
RECEIVED

MAR 01 1999

WATER RESOURCES DEPT
 SALEM, OREGON



Source: USGS 7.5 Minute
 Quad: Spode Mtn., Silver
 Dollar Flat
 Vertical Datum: National
 Geodetic Vertical Datum of
 1929
 Horizontal Datum: 1927 North
 American Datum



KLAMATH ADJUDICATION
 CLAIM # 59 PAGE # 05

Reach boundaries: Teddy Powers Meadow to Blue Creek.
 Plate 1 of 2.

Klamath Basin Water Rights Claim Map
 Department of the Interior Bureau of Indian Affairs
 Reach Name: Sycan River #2
 Scale: 1:24,000

UPPER REACH BOUNDARY
Latitude: 42° 39' 3.32"
Longitude: 121° 21' 24.12"
T 34S, R 11E, S 1, NW 1/4, SE 1/4
Distance/Bearing/Azimuth: From SE corner N41°37'31" W, 909.6m, 318°22'29"
LOWER REACH BOUNDARY
Latitude: 42° 33' 44.96"
Longitude: 121° 19' 23.75"
T 35S, R 12E, S 5, NE 1/4, SW 1/4
Distance/Bearing/Azimuth: From SW corner N 42° 9' 43" E, 636.2m, 42° 9' 43"

RECEIVED

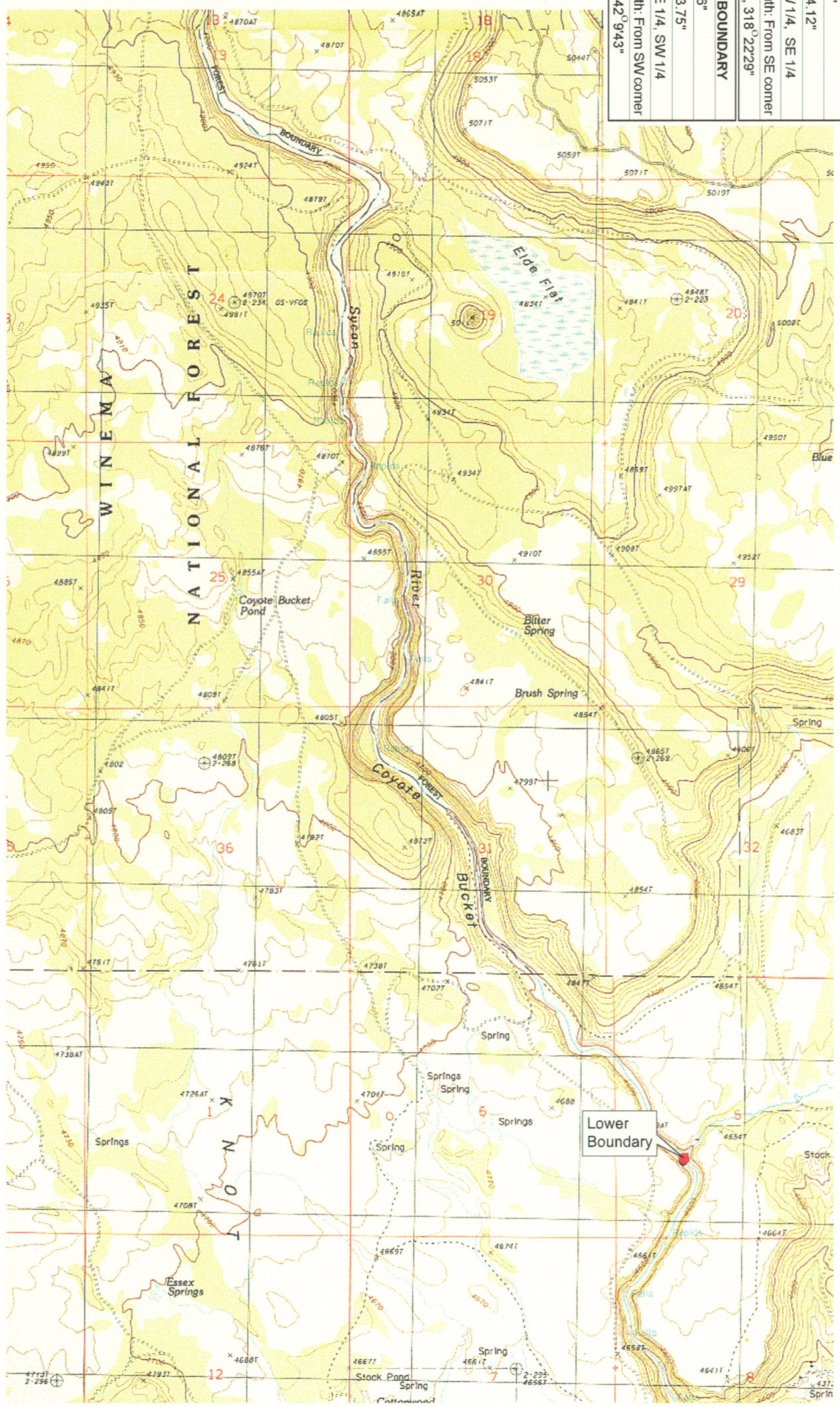
MAR 01 1999

WALSH RESOURCES DEPT.
SALEM, OREGON



Source: USGS 7.5 Minute
Quad: Spodue Mtn., Silver
Dollar Flat.

Vertical Datum: National
Geodetic Vertical Datum of
1929
Horizontal Datum: 1927 North
American Datum.



KLAMATH ADJUDICATION
CLAIM # 659 PAGE # **06**

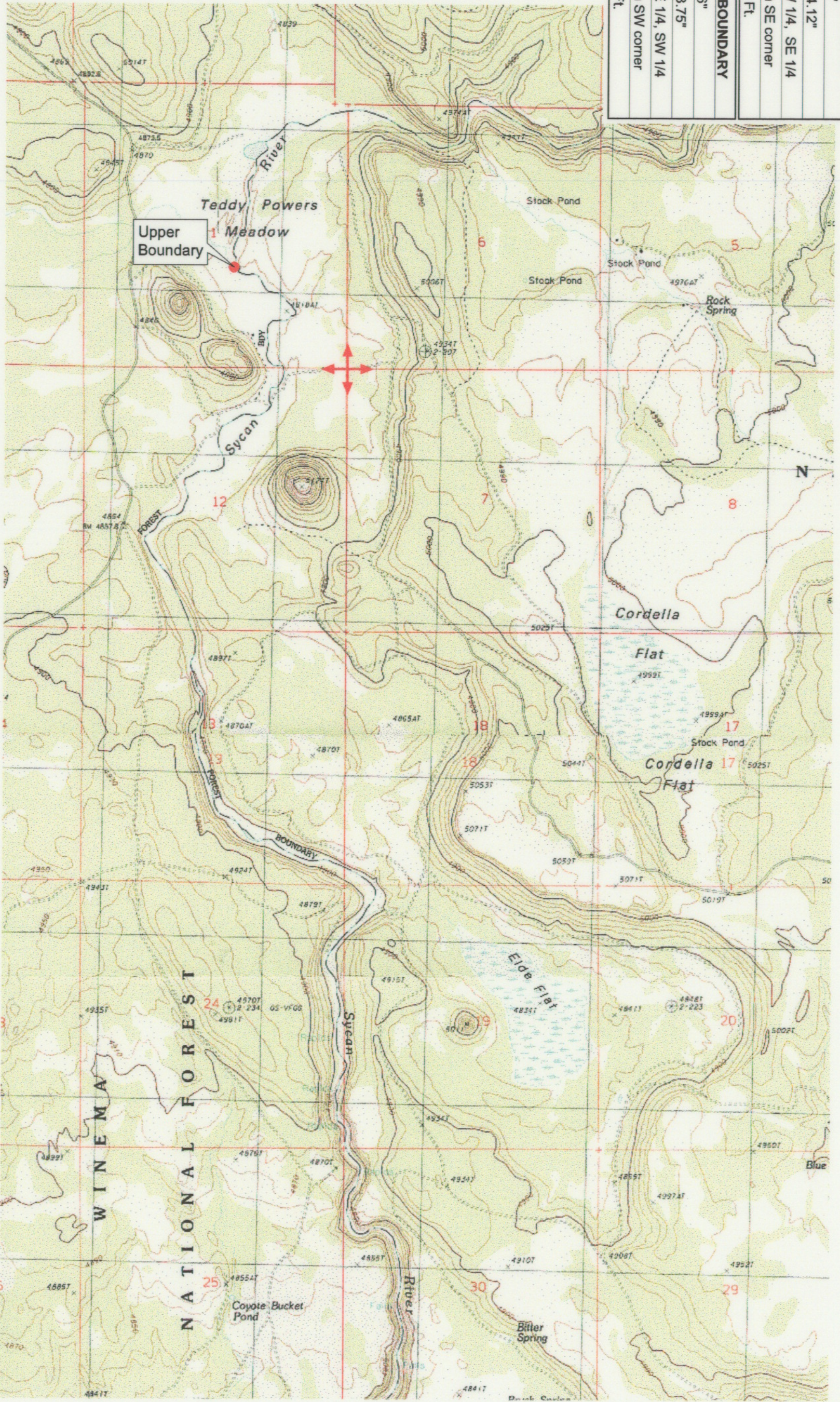
Reach boundaries: Teddy Powers Meadow to Blue Creek.
Plate 2 of 2.

Klamath Basin Water Rights Claim Map
Department of the Interior Bureau of Indian Affairs
Reach Name: Sycan River #2
Scale: 1:24,000

UPPER REACH BOUNDARY
Latitude: 42° 39' 3.32"
Longitude: 121° 21' 24.12"
T 34S, R 11E, S 1, NW 1/4, SE 1/4
Bearing/Distance: From SE corner N48°22'29" W, 2,984.3 Ft.
LOWER REACH BOUNDARY
Latitude: 42° 33' 44.96"
Longitude: 121° 19' 23.75"
T 35S, R 12E, S 5, NE 1/4, SW 1/4
Bearing/Distance: From SW corner N 42° 9' 43" E, 2,087.3 Ft.



Source: USGS 7.5 Minute
 Quad: Spodue Mtn., Silver
 Dollar Flat.
 Vertical Datum: National
 Geodetic Vertical Datum of
 1929.
 Horizontal Datum: 1927 North
 American Datum.



KLAMATH ADJUDICATION
 CLAIM # **659** PAGE # **017**

Reach boundaries: Teddy Powers Meadow to Blue Creek.
 Plate 1 of 2.

RECEIVED

OCT 01 1999

WATER RESOURCES DEPT.
 SALEM, OREGON

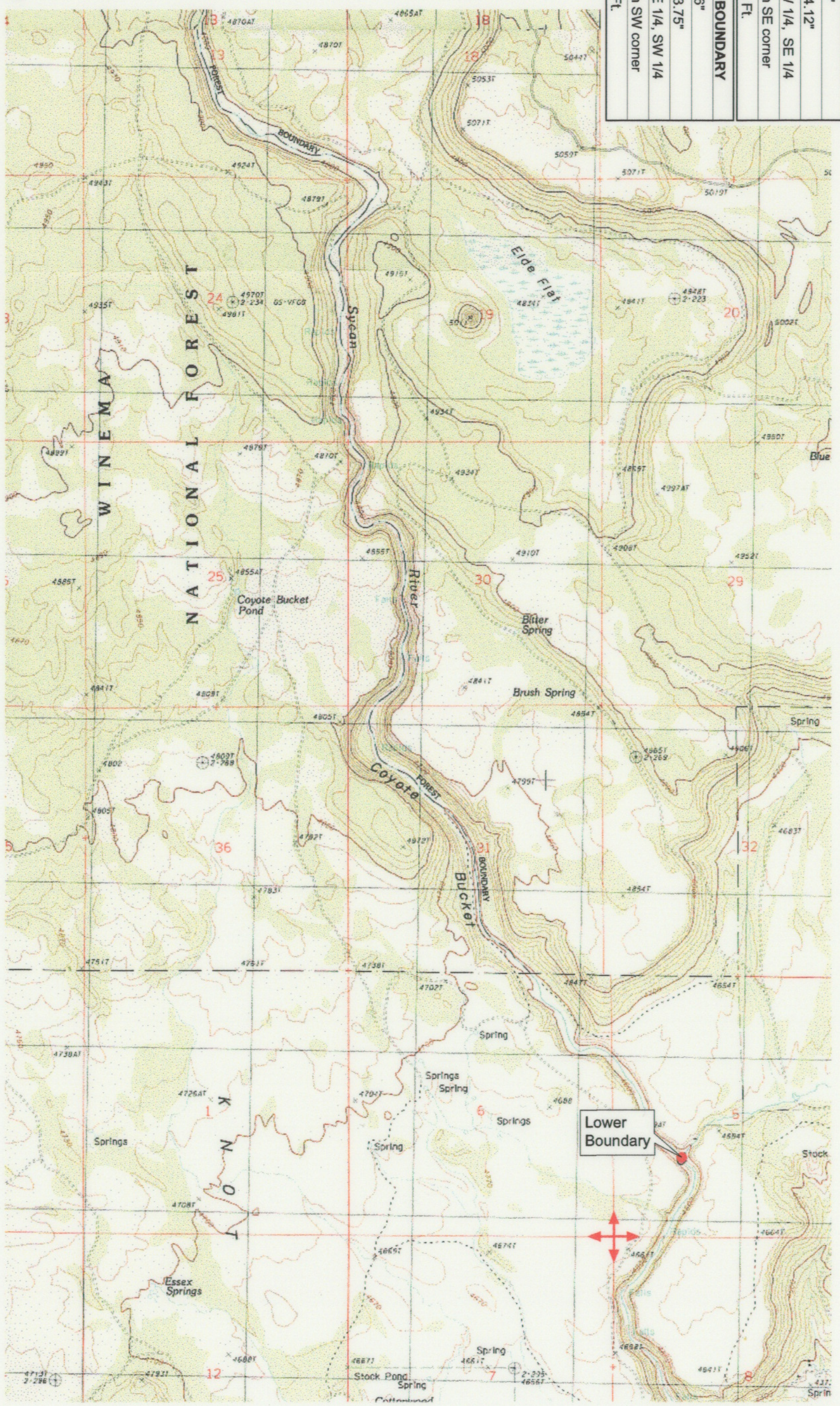
Klamath Basin Water Rights Claim #659
 Department of the Interior Bureau of Indian Affairs
 Reach Name: Sycan River #2 (SY 2)
 Scale: 1:24,000
 (Amended)

\\slray\etk\Graphics\Projects\GIS\BIA\6017726\Topo\117gs2.mxd

UPPER REACH BOUNDARY
Latitude: 42° 39' 3.32"
Longitude: 121° 21' 24.12"
T 34S, R 11E, S 1, NW 1/4, SE 1/4
Bearing/Distance: From SE corner N48°22'29" W, 2,984.3 Ft.
LOWER REACH BOUNDARY
Latitude: 42° 33' 44.96"
Longitude: 121° 19' 23.75"
T 35S, R 12E, S 5, NE 1/4, SW 1/4
Bearing/Distance: From SW corner N 42° 9' 43" E, 2,087.3 Ft.



Source: USGS 7.5 Minute
 Quad: Spodue Mtn., Silver
 Dollar Flat.
 Vertical Datum: National
 Geodetic Vertical Datum of
 1929.
 Horizontal Datum: 1927 North
 American Datum.



KLAMATH ADJUDICATION
 CLAIM # **659** PAGE # **018**

Reach boundaries: Teddy Powers Meadow to Blue Creek.
 Plate 2 of 2.

RECEIVED
 OCT 01 1999
 WATER RESOURCES DEPT.
 SALEM, OREGON

Klamath Basin Water Rights Claim #659
 Department of the Interior Bureau of Indian Affairs
 Reach Name: Sycan River #2 (SY 2)
 Scale: 1:24,000
 (Amended)
 \\slatray\etl\Graphics\Projects\GIS\BIA\60177_26\Topo\1117\gis2.mxd