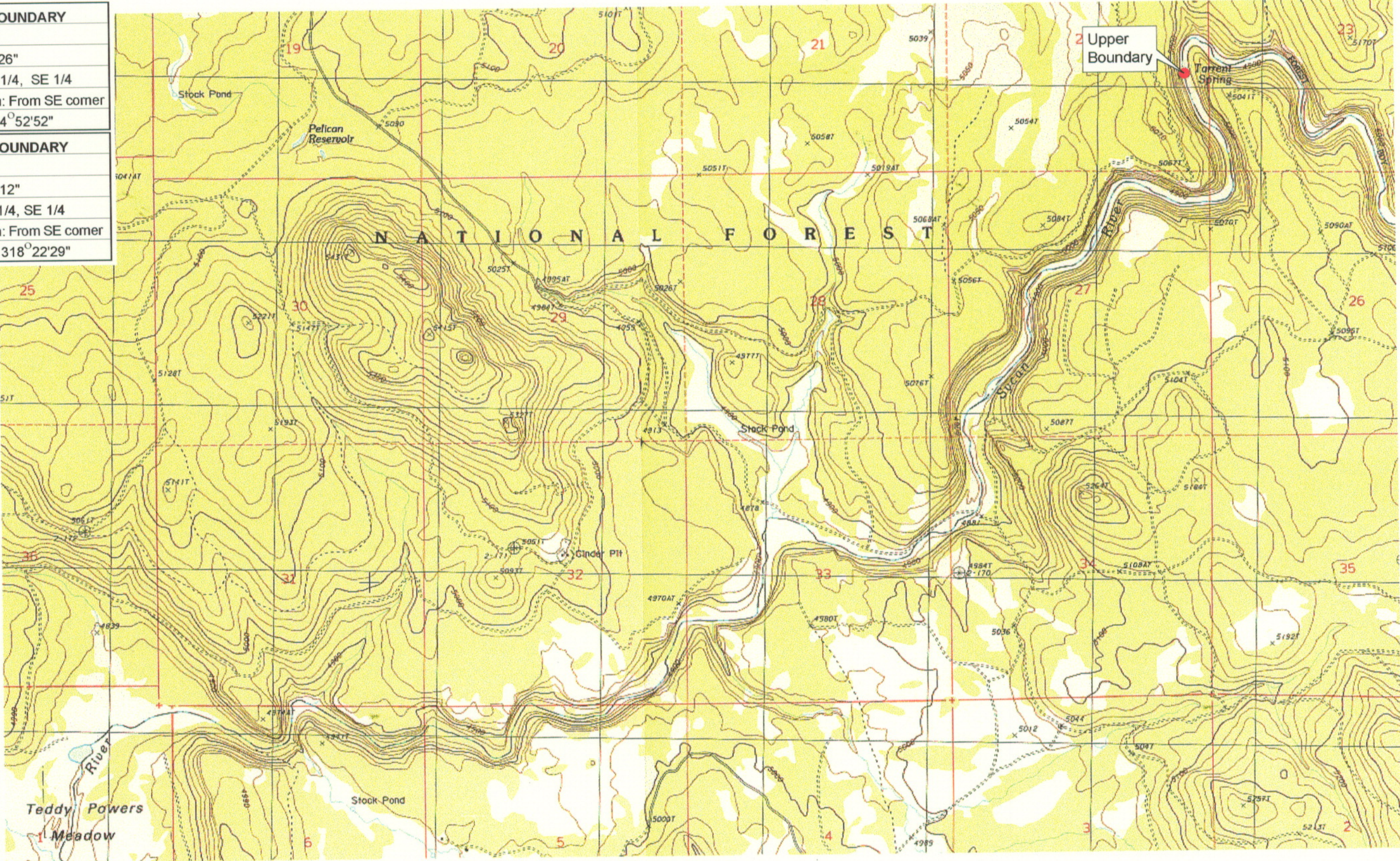


UPPER REACH BOUNDARY	
Latitude:	42° 41' 39.03"
Longitude:	121° 16' 20.26"
T 33S, R 12E, S 22, NE 1/4, SE 1/4	
Distance/Bearing/Azimuth: From SE corner N 75° 7' 8" W, 641.2m, 284° 52' 52"	
LOWER REACH BOUNDARY	
Latitude:	42° 39' 3.32"
Longitude:	121° 21' 24.12"
T 34S, R 11E, S 1, NW 1/4, SE 1/4	
Distance/Bearing/Azimuth: From SE corner N 41° 37' 31" W, 909.6m, 318° 22' 29"	



**RECEIVED**  
 MAR 01 1999  
 WATER RESOURCES DEPT.  
 SALEM, OREGON



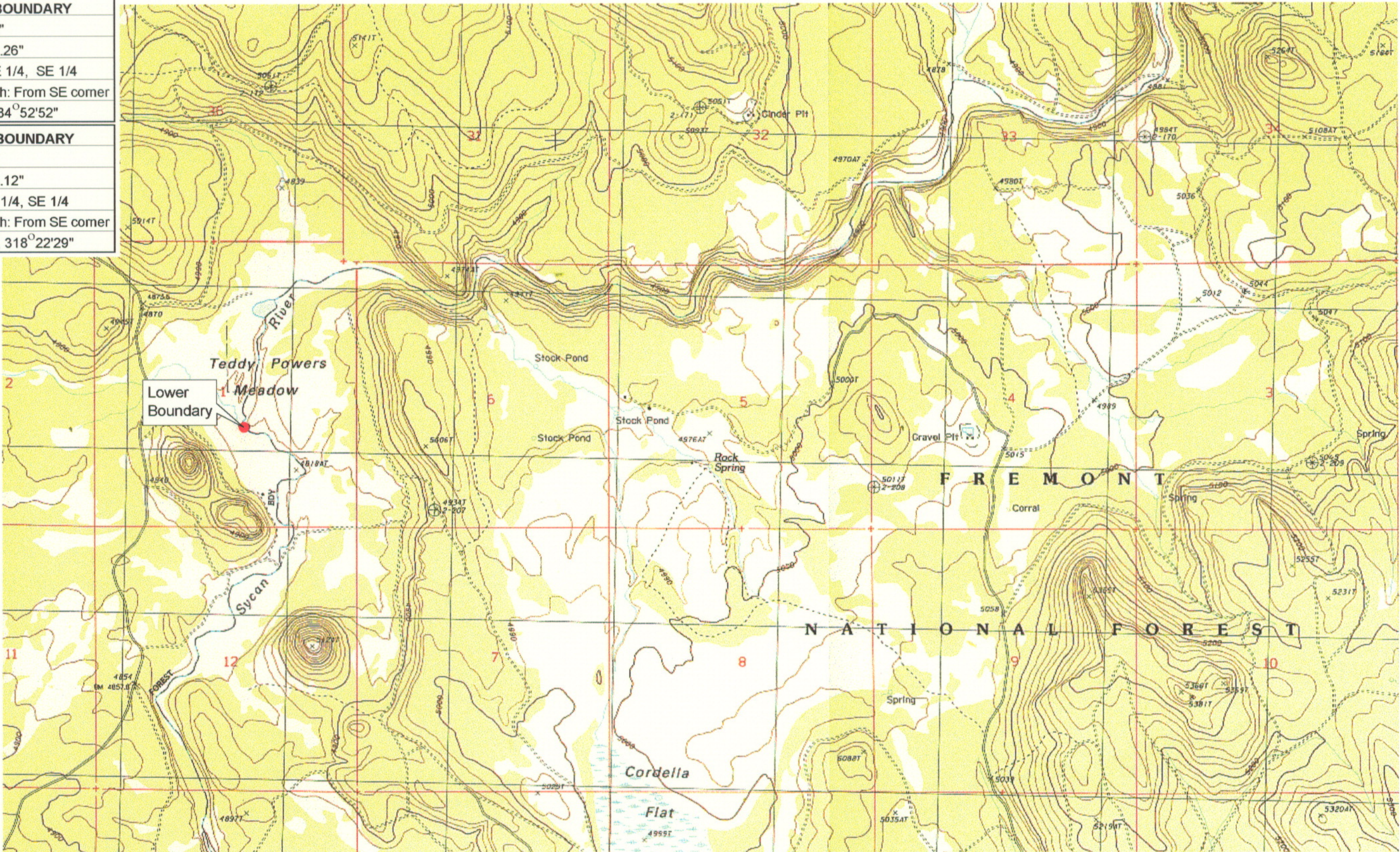
Source: USGS 7.5 Minute  
 Quad: Silver Dollar Flat.  
 Vertical Datum: National  
 Geodetic Vertical Datum of  
 1929.  
 Horizontal Datum: 1927 North  
 American Datum.

**KLAMATH ADJUDICATION**  
 CLAIM # **660** PAGE # **05**

Reach boundaries: Torrent Spring to Teddy Powers Meadow.  
 Plate 1 of 2.

**Klamath Basin Water Rights Claim Map**  
 Department of the Interior Bureau of Indian Affairs  
 Reach Name: **Sycan River #3**  
 Scale: 1:24,000

<b>UPPER REACH BOUNDARY</b>
Latitude: 42° 41' 39.03"
Longitude: 121° 16' 20.26"
T 33S, R 12E, S 22, NE 1/4, SE 1/4
Distance/Bearing/Azimuth: From SE corner N 75° 7' 8" W, 641.2m, 284° 52' 52"
<b>LOWER REACH BOUNDARY</b>
Latitude: 42° 39' 3.32"
Longitude: 121° 21' 24.12"
T 34S, R 11E, S 1, NW 1/4, SE 1/4
Distance/Bearing/Azimuth: From SE corner N 41° 37' 31" W, 909.6m, 318° 22' 29"



**RECEIVED**  
 MAR 01 1999  
 WATER RESOURCES DEPT.  
 SALEM, OREGON



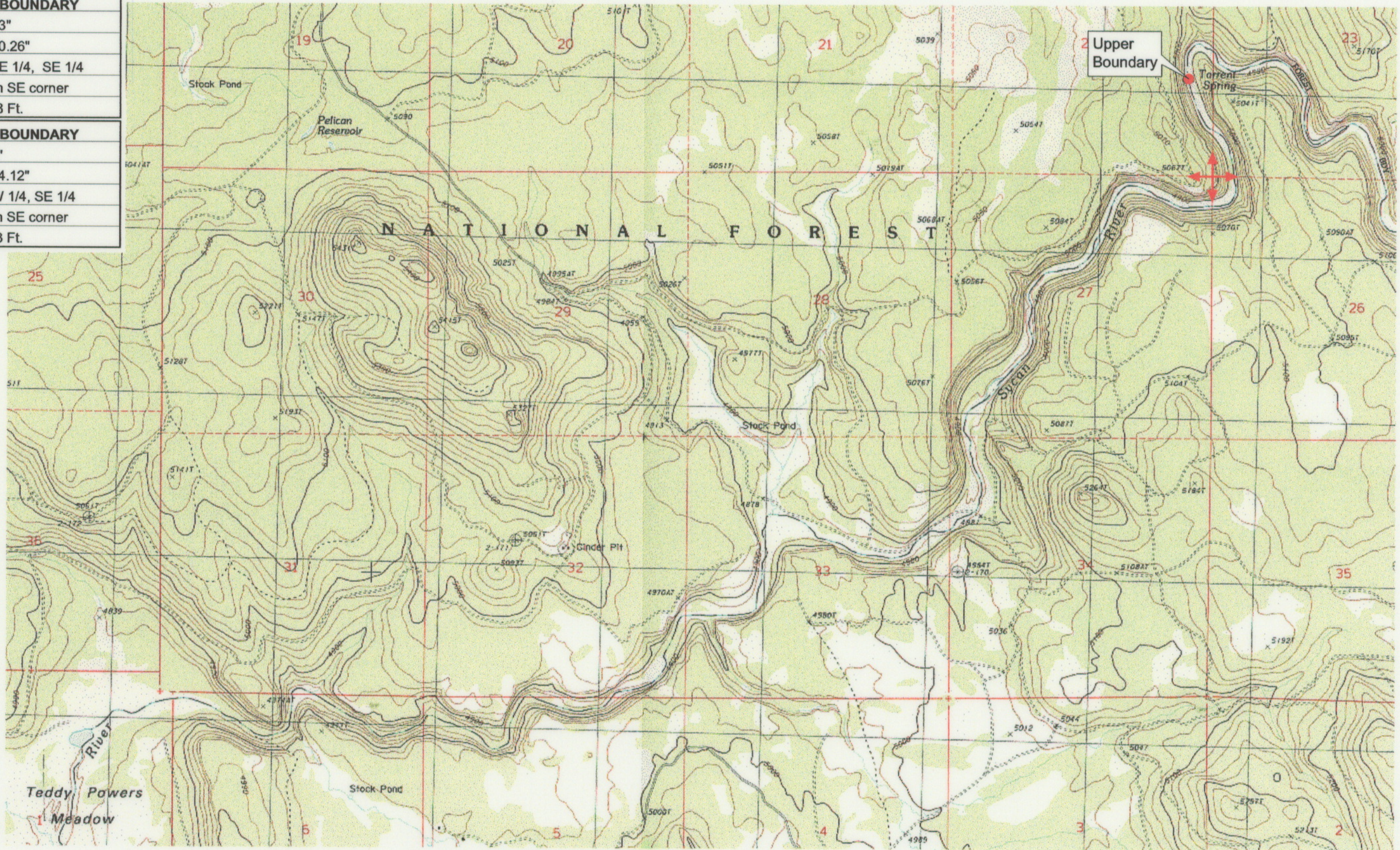
Source: USGS 7.5 Minute  
 Quad: Silver Dollar Flat.  
 Vertical Datum: National  
 Geodetic Vertical Datum of  
 1929.  
 Horizontal Datum: 1927 North  
 American Datum.

**KLAMATH ADJUDICATION**  
 CLAIM **660** PAGE # **06**

Reach boundaries: Torrent Spring to Teddy Powers Meadow.  
 Plate 2 of 2.

<b>Klamath Basin Water Rights Claim Map</b>
Department of the Interior Bureau of Indian Affairs
Reach Name: <b>Sycan River #3</b>
Scale: 1:24,000

<b>UPPER REACH BOUNDARY</b>
Latitude: 42° 41' 39.03"
Longitude: 121° 16' 20.26"
T 33S, R 12E, S 22, NE 1/4, SE 1/4
Bearing/Distance: From SE corner N 14° 52' 52" W, 2,103.8 Ft.
<b>LOWER REACH BOUNDARY</b>
Latitude: 42° 39' 3.32"
Longitude: 121° 21' 24.12"
T 34S, R 11E, S1, NW 1/4, SE 1/4
Bearing/Distance: From SE corner N48° 22' 29" W, 2,984.3 Ft.



Source: USGS 7.5 Minute Quad: Silver Dollar Flat.

Vertical Datum: National Geodetic Vertical Datum of 1929.

Horizontal Datum: 1927 North American Datum.

**KLAMATH ADJUDICATION**  
**CLAIM # 660 PAGE # 017**

Reach boundaries: Torrent Spring to Teddy Powers Meadow.  
 Plate 1 of 2.

**RECEIVED**

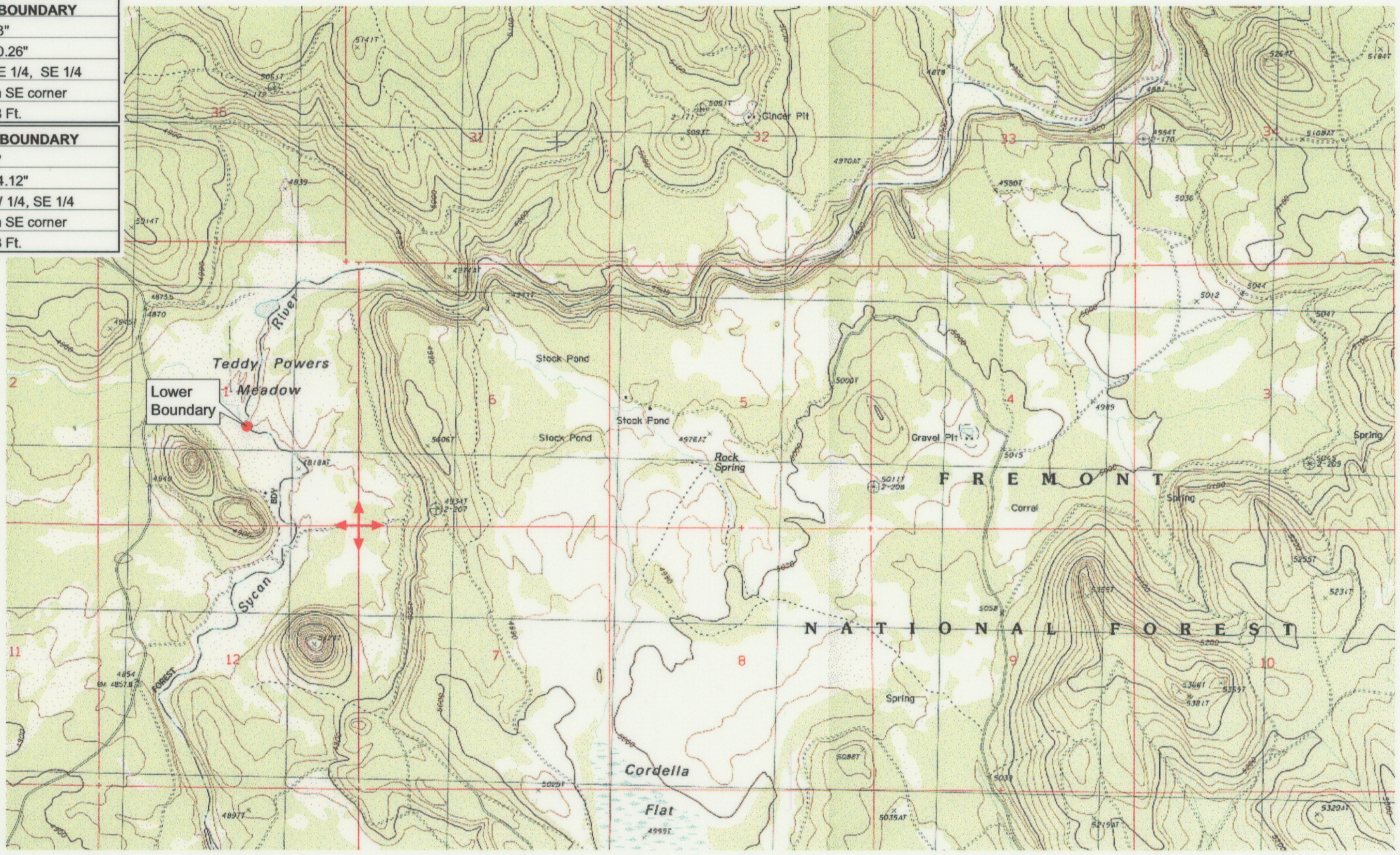
OCT 01 1999

WATER RESOURCES DEPT.  
 SALEM, OREGON

**Klamath Basin Water Rights Claim #660**  
 Department of the Interior Bureau of Indian Affairs  
 Reach Name: **Sycan River #3 (SY 3)**  
 Scale: 1:24,000 (Amended)

\\Lafayette\Graphics\Projects\GIS\BIA\60177.26\Topo\1117gis2.fn8

<b>UPPER REACH BOUNDARY</b>
Latitude: 42° 41' 39.03"
Longitude: 121° 16' 20.26"
T 33S, R 12E, S 22, NE 1/4, SE 1/4
Bearing/Distance: From SE corner N 14° 52' 52" W, 2,103.8 Ft.
<b>LOWER REACH BOUNDARY</b>
Latitude: 42° 39' 3.32"
Longitude: 121° 21' 24.12"
T 34S, R 11E, S1, NW 1/4, SE 1/4
Bearing/Distance: From SE corner N48° 22' 29" W, 2,984.3 Ft.



Source: USGS 7.5 Minute Quad: Silver Dollar Flat.  
 Vertical Datum: National Geodetic Vertical Datum of 1929.  
 Horizontal Datum: 1927 North American Datum.

**KLAMATH ADJUDICATION**  
**CLAIM # 660 PAGE # 018**

Reach boundaries: Torrent Spring to Teddy Powers Meadow.  
 Plate 2 of 2.

**RECEIVED**  
 OCT 01 1999  
 WATER RESOURCES DEPT.  
 SALEM, OREGON

**Klamath Basin Water Rights Claim #660**  
 Department of the Interior Bureau of Indian Affairs  
 Reach Name: **Sycan River #3 (SY 3)**  
 Scale: 1:24,000 (Amended)

\\Lafayette\Graphics\Projects\GIS\BIA\60177.26\Topo\1117gis2.fh8