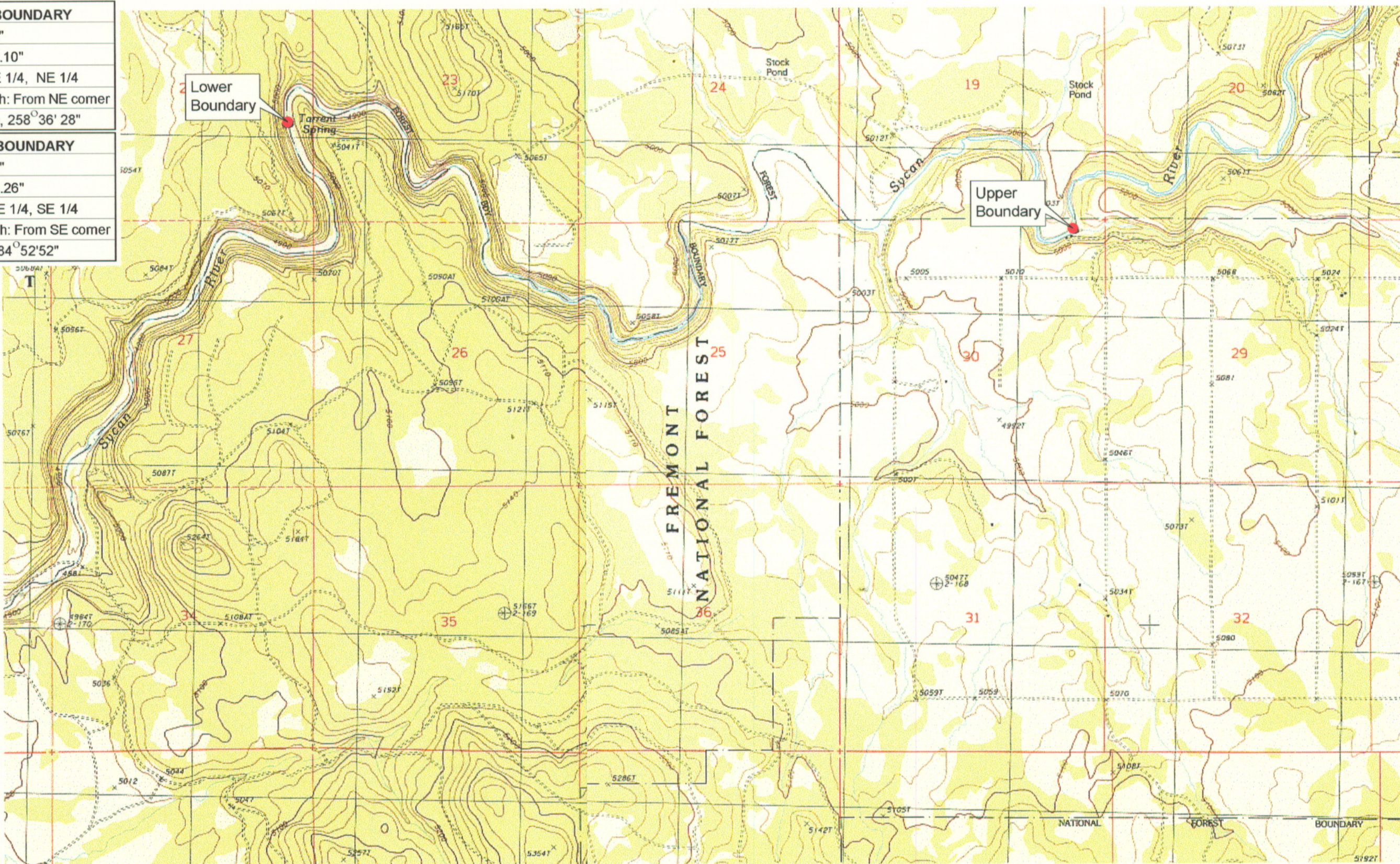


UPPER REACH BOUNDARY
 Latitude: 42° 41' 17.52"
 Longitude: 121° 12' 50.10"
 T 33S, R 13E, S 30, NE 1/4, NE 1/4
 Distance/Bearing/Azimuth: From NE corner
 S 78°36' 28" W, 243.6m, 258°36' 28"

LOWER REACH BOUNDARY
 Latitude: 42° 41' 39.03"
 Longitude: 121° 16' 20.26"
 T 33S, R 12E, S 22, NE 1/4, SE 1/4
 Distance/Bearing/Azimuth: From SE corner
 N 75°7'8" W, 641.2m, 284°52'52"



RECEIVED
 MAR 01 1999
 WATER RESOURCES DEPT
 SALEM, OREGON

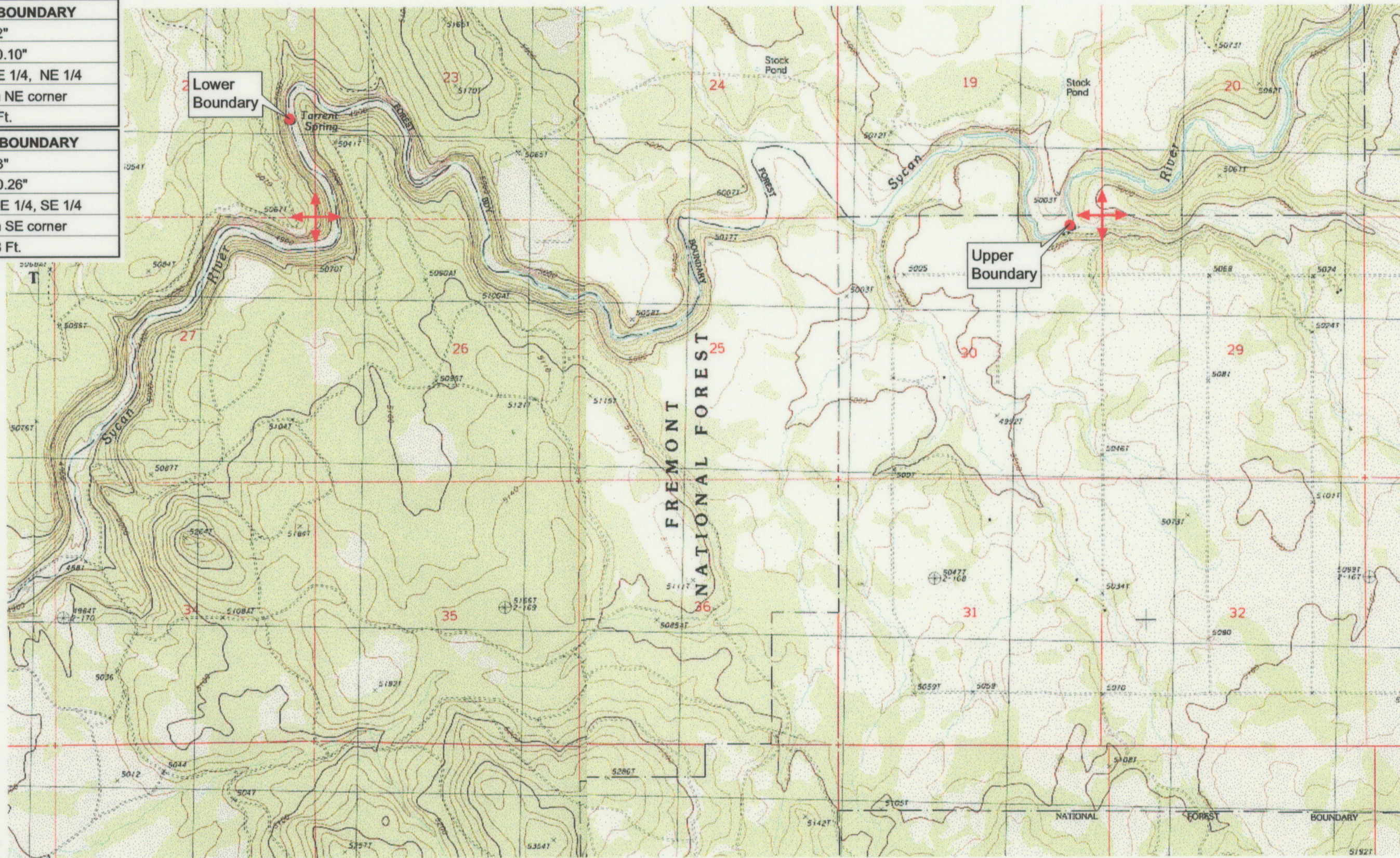
Source: USGS 7.5 Minute
 Quad: Riverbed Butte, Silver
 Dollar Flat.
 Vertical Datum: National
 Geodetic Vertical Datum of
 1929.
 Horizontal Datum: 1927 North
 American Datum.

KLAMATH ADJUDICATION
CLAIM #661 PAGE # 04

Reach boundaries: Merrit Creek to Torrent Spring.
 Plate 1 of 1.

Klamath Basin Water Rights Claim Map
 Department of the Interior Bureau of Indian Affairs
 Reach Name: **Sycan River #4**
 Scale: 1:24,000

UPPER REACH BOUNDARY
Latitude: 42° 41' 17.52"
Longitude: 121° 12' 50.10"
T 33S, R 13E, S 30, NE 1/4, NE 1/4
Bearing/Distance: From NE corner S 78° 36' 28" W, 799.2 Ft.
LOWER REACH BOUNDARY
Latitude: 42° 41' 39.03"
Longitude: 121° 16' 20.26"
T 33S, R 12E, S 22, NE 1/4, SE 1/4
Bearing/Distance: From SE corner N 14° 52' 52" W, 2,103.8 Ft.



Source: USGS 7.5 Minute Quad: Riverbed Butte, Silver Dollar Flat.

Vertical Datum: National Geodetic Vertical Datum of 1929.
Horizontal Datum: 1927 North American Datum.

KLAMATH ADJUDICATION
CLAIM # **661** PAGE # **014**

Reach boundaries: Merrit Creek to Torrent Spring.
Plate 1 of 1.

RECEIVED

OCT 01 1999

WATER RESOURCES DEPT.
SALEM, OREGON

Klamath Basin Water Rights Claim #661
Department of the Interior Bureau of Indian Affairs
Reach Name: **Sycan River #4 (SY 4)**
Scale: 1:24,000 (Amended)

\\Lafayette\Graphics\Projects\GIS\BIA\60177.26\Topo\1117gis2.th8