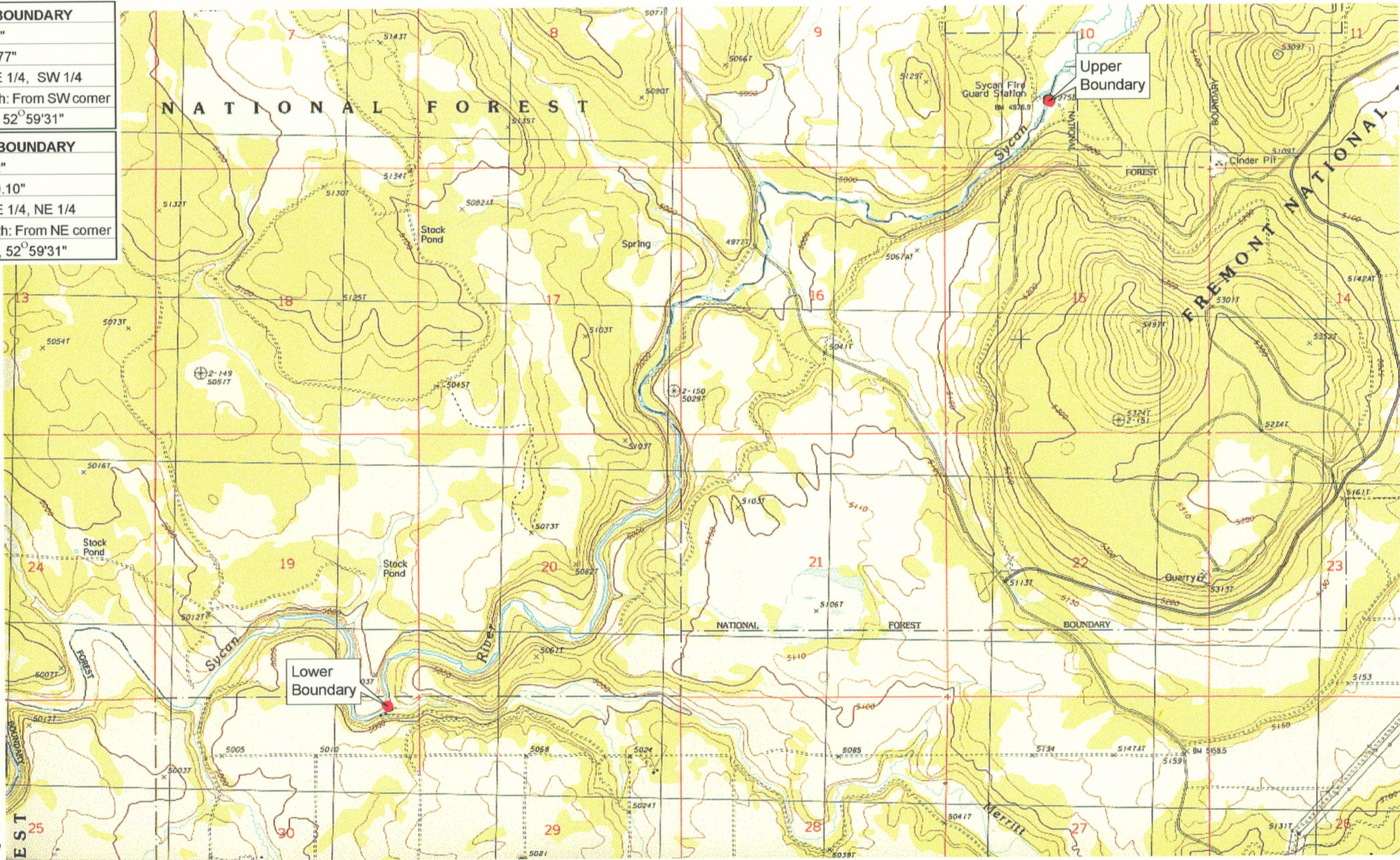


UPPER REACH BOUNDARY
Latitude: 42° 43' 16.75"
Longitude: 121° 9' 52.77"
T 33S, R 13E, S 10, NE 1/4, SW 1/4
Distance/Bearing/Azimuth: From SW corner N 52°59'31" E, 733.7m, 52°59'31"
LOWER REACH BOUNDARY
Latitude: 42° 41' 17.52"
Longitude: 121° 12' 50.10"
T 33S, R 13E, S 30, NE 1/4, NE 1/4
Distance/Bearing/Azimuth: From NE corner S 78°36'28" W, 243.6m, 52°59'31"



RECEIVED

MAR 01 1999

WATER RESOURCES DEPT.
SALEM, OREGON



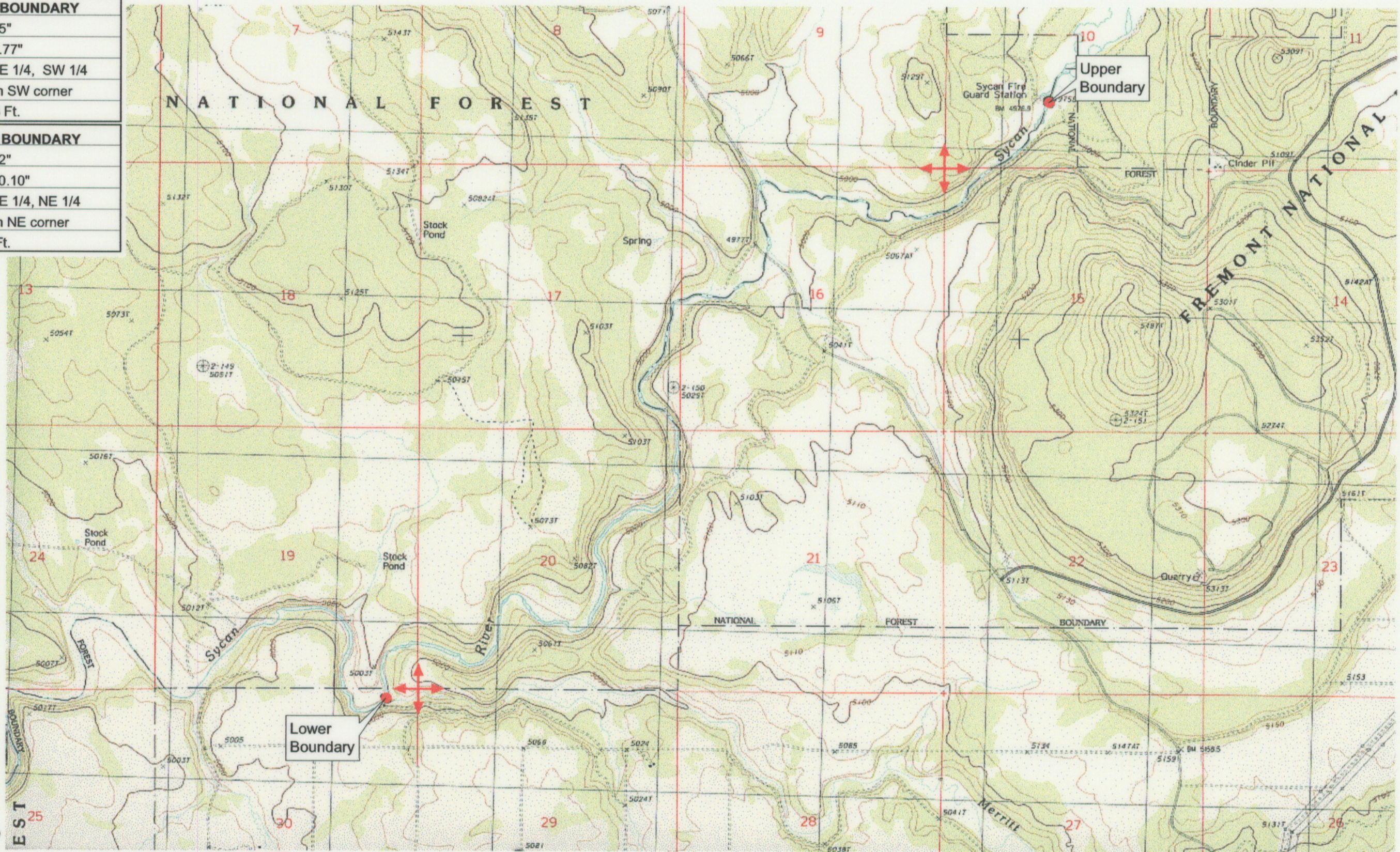
Source: USGS 7.5 Minute
Quad: Riverbed Butte Spr.
Vertical Datum: National
Geodetic Vertical Datum of
1929.
Horizontal Datum: 1927 North
American Datum.

KLAMATH ADJUDICATION
CLAIM # 662 PAGE # 04

Reach boundaries: Guard Station to Merrit Creek.
Plate 1 of 1.

Klamath Basin Water Rights Claim Map
Department of the Interior Bureau of Indian Affairs
Reach Name: Sycan River #5
Scale: 1:24,000

UPPER REACH BOUNDARY
Latitude: 42° 43' 16.75"
Longitude: 121° 9' 52.77"
T 33S, R 13E, S 10, NE 1/4, SW 1/4
Bearing/Distance: From SW corner N 52°59'31" E, 2,407.3 Ft.
LOWER REACH BOUNDARY
Latitude: 42° 41' 17.52"
Longitude: 121° 12' 50.10"
T 33S, R 13E, S 30, NE 1/4, NE 1/4
Bearing/Distance: From NE corner S 78°36'28" W, 799.2 Ft.



Source: USGS 7.5 Minute Quad: Riverbed Butte Spr.
 Vertical Datum: National Geodetic Vertical Datum of 1929.
 Horizontal Datum: 1927 North American Datum.

KLAMATH ADJUDICATION
CLAIM # 662 PAGE # 015

Reach boundaries: Guard Station to Merrit Creek.
 Plate 1 of 1.

RECEIVED
OCT 01 1999
 WATER RESOURCES DEPT.
 SALEM, OREGON

Klamath Basin Water Rights Claim #662
 Department of the Interior Bureau of Indian Affairs
 Reach Name: **Sycan River #5 (SY 5)**
 Scale: 1:24,000 (Amended)

\\Lafayette\Graphics\Projects\GIS\BIA\60177.26\Topo\1117gis2.fh8