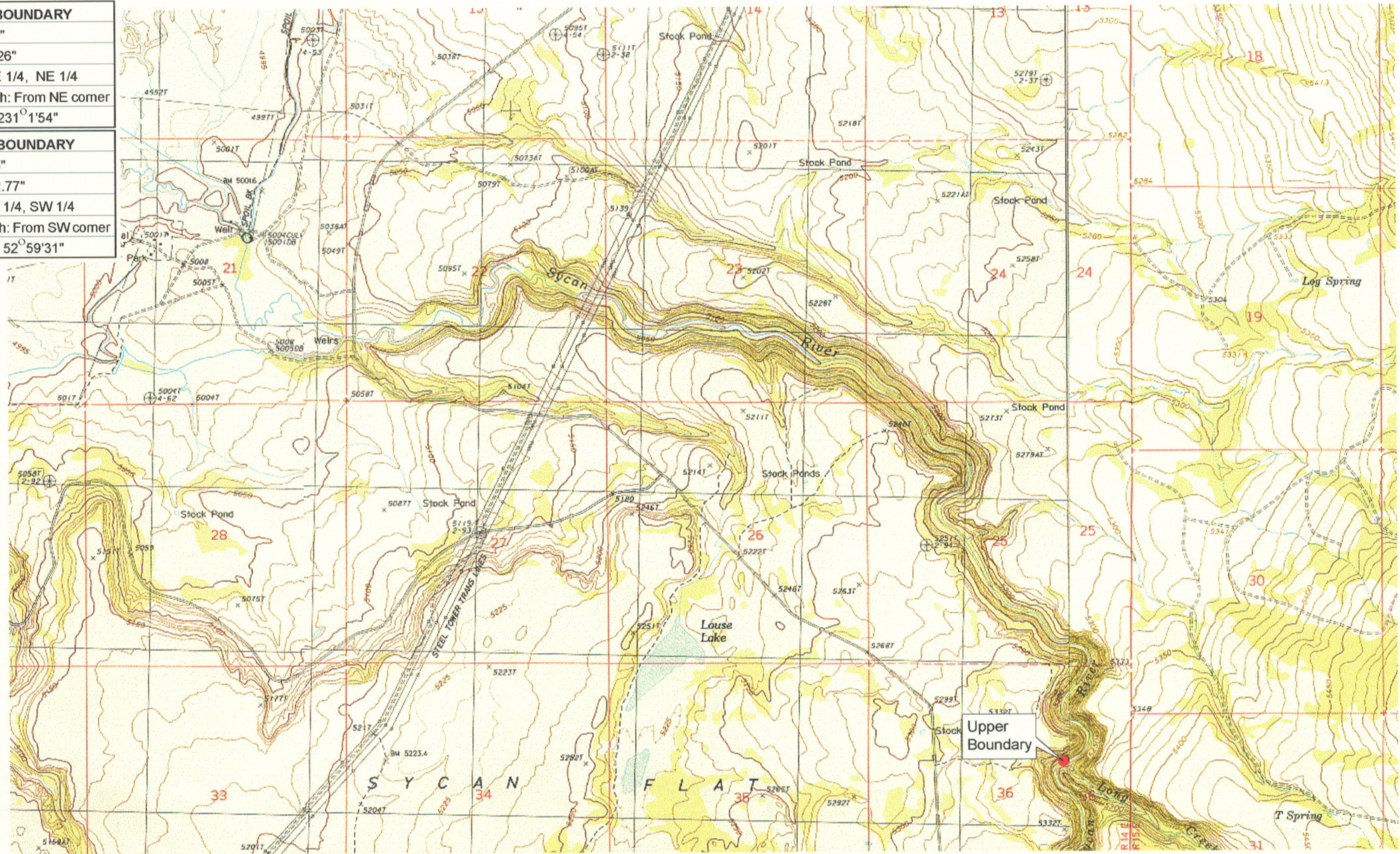


UPPER REACH BOUNDARY
Latitude: 42° 45' 20.40"
Longitude: 121° 00' 1.26"
T 32S, R 14E, S 36, SE 1/4, NE 1/4
Distance/Bearing/Azimuth: From NE corner S 51° 1' 54" W, 470.8m, 231° 1' 54"
LOWER REACH BOUNDARY
Latitude: 42° 43' 16.75"
Longitude: 121° 09' 52.77"
T 33S, R 13E, S 10, NE 1/4, SW 1/4
Distance/Bearing/Azimuth: From SW corner N 52° 59' 31" E, 733.7m, 52° 59' 31"



RECEIVED
 MAR 01 1999
 WATER RESOURCES DEPT
 SALEM, OREGON



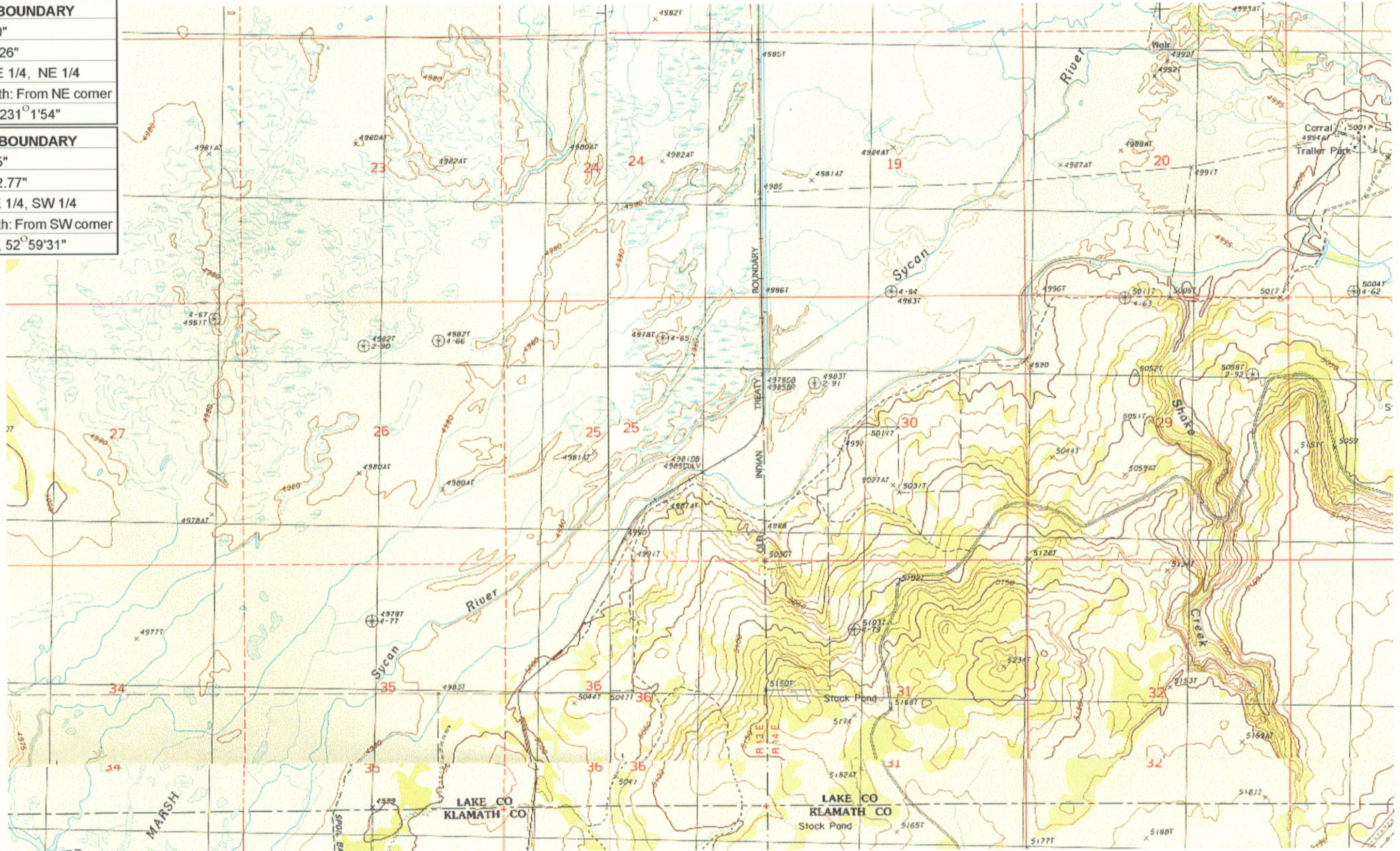
Source: USGS 7.5 Minute
 Quad: Sycan Marsh East,
 Sycan Marsh West, Riverbed
 Butte Spr., Pole Butte.
 Vertical Datum: National
 Geodetic Vertical Datum of
 1929.
 Horizontal Datum: 1927 North
 American Datum.

KLAMATH ADJUDICATION
CLAIM 663 PAGE # 06

Reach boundaries: Long Creek to Guard Station.
 Plate 1 of 3.

Klamath Basin Water Rights Claim Map
 Department of the Interior Bureau of Indian Affairs
 Reach Name: **Sycan River #6**
 Scale: 1:24,000

UPPER REACH BOUNDARY
Latitude: 42° 45' 20.40"
Longitude: 121° 00' 1.26"
T 32S, R 14E, S 36, SE 1/4, NE 1/4
Distance/Bearing/Azimuth: From NE corner S 51° 1' 54" W, 470.8m, 231° 1' 54"
LOWER REACH BOUNDARY
Latitude: 42° 43' 16.75"
Longitude: 121° 09' 52.77"
T 33S, R 13E, S 10, NE 1/4, SW 1/4
Distance/Bearing/Azimuth: From SW corner N 52° 59' 31" E, 733.7m, 52° 59' 31"



RECEIVED
MAR 01 1999
 WATER RESOURCES DEPT.
 SALEM, OREGON

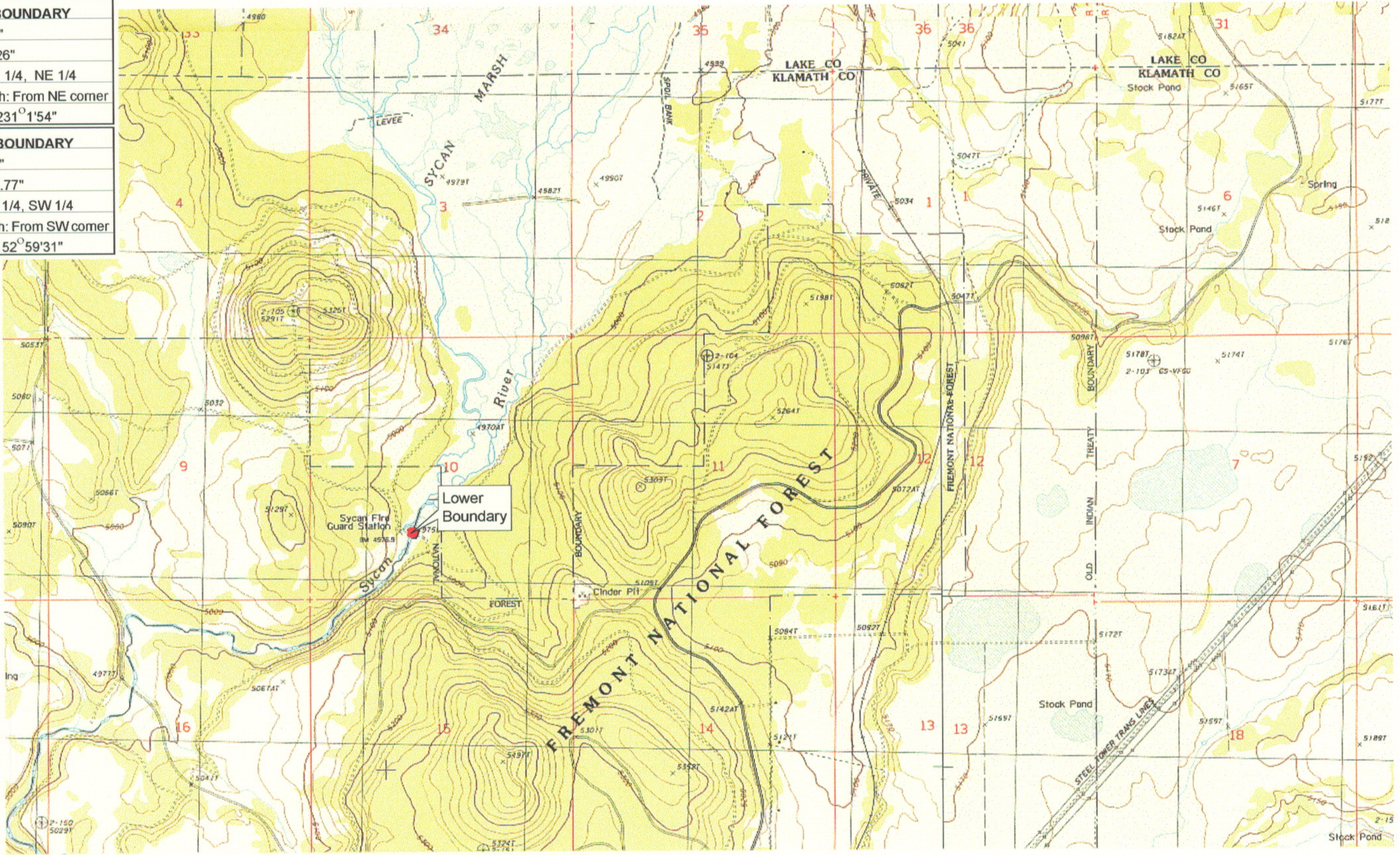
Source: USGS 7.5 Minute
 Quad: Sycan Marsh East,
 Sycan Marsh West, Riverbed
 Butte Spr., Pole Butte.
 Vertical Datum: National
 Geodetic Vertical Datum of
 1929.
 Horizontal Datum: 1927 North
 American Datum.

KLAMATH ADJUDICATION
CLAIM #663 PAGE # 07

Reach boundaries: Long Creek to Guard Station.
 Plate 2 of 3.

Klamath Basin Water Rights Claim Map
 Department of the Interior Bureau of Indian Affairs
 Reach Name: **Sycan River #6**
 Scale: 1:24,000

UPPER REACH BOUNDARY
Latitude: 42° 45' 20.40"
Longitude: 121° 00' 1.26"
T 32S, R 14E, S 36, SE 1/4, NE 1/4
Distance/Bearing/Azimuth: From NE corner S 51° 1' 54" W, 470.8m, 231° 1' 54"
LOWER REACH BOUNDARY
Latitude: 42° 43' 16.75"
Longitude: 121° 09' 52.77"
T 33S, R 13E, S 10, NE 1/4, SW 1/4
Distance/Bearing/Azimuth: From SW corner N 52° 59' 31" E, 733.7m, 52° 59' 31"



RECEIVED
 MAR 01 1999
 WATER RESOURCES DEPT.
 SALEM, OREGON



Source: USGS 7.5 Minute
 Quad: Sycan Marsh East,
 Sycan Marsh West, Riverbed
 Butte Spr., Pole Butte.
 Vertical Datum: National
 Geodetic Vertical Datum of
 1929.
 Horizontal Datum: 1927 North
 American Datum.

KLAMATH ADJUDICATION
 CLAIM **663** PAGE # **08**

Reach boundaries: Long Creek to Guard Station.
 Plate 3 of 3.

Klamath Basin Water Rights Claim Map
 Department of the Interior Bureau of Indian Affairs
 Reach Name: **Sycan River #6**
 Scale: 1:24,000

UPPER REACH BOUNDARY
Latitude: 42° 45' 20.40"
Longitude: 121° 00' 1.26"
T 32S, R 14E, S 36, SE 1/4, NE 1/4
Bearing/Distance: From NE corner S 51° 1' 54" W, 1,544.7 Ft.
LOWER REACH BOUNDARY
Latitude: 42° 43' 16.75"
Longitude: 121° 09' 52.77"
T 33S, R 13E, S 10, NE 1/4, SW 1/4
Bearing/Distance: From SW corner N 52° 59' 31" E, 2,407.3 Ft.



Source: USGS 7.5 Minute Quad: Sycan Marsh East, Sycan Marsh West, Riverbed Butte Spr., Pole Butte.

Vertical Datum: National Geodetic Vertical Datum of 1929.
Horizontal Datum: 1927 North American Datum.

KLAMATH ADJUDICATION
CLAIM # 663 PAGE # 18

Reach boundaries: Long Creek to Guard Station.
Plate 1 of 3.

RECEIVED

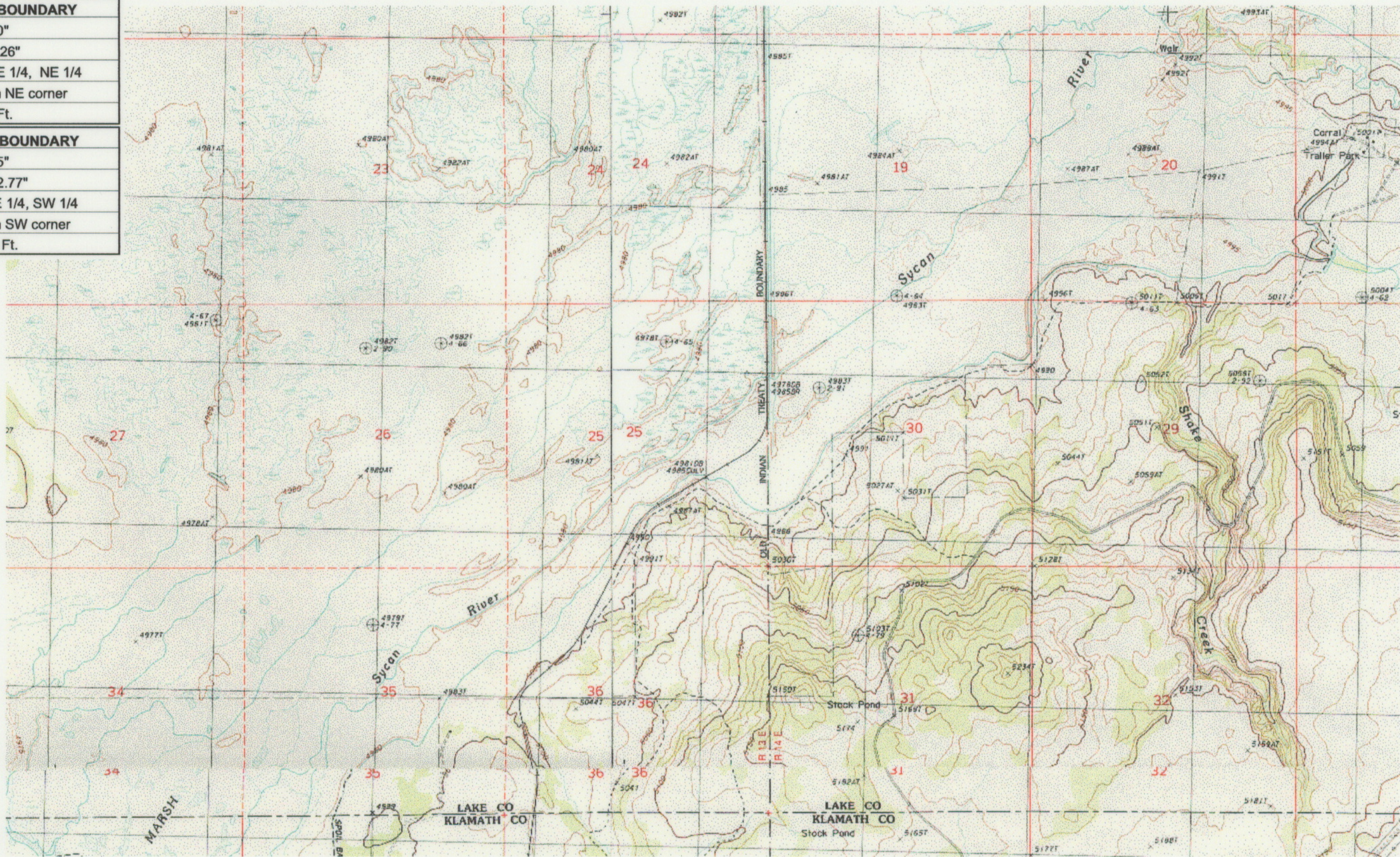
OCT 01 1999

WATER RESOURCES DEPT.
SALEM, OREGON

Klamath Basin Water Rights Claim #663
 Department of the Interior Bureau of Indian Affairs
 Reach Name: Sycan River #6 (SY 6)
 Scale: 1:24,000 (Amended)

\\Lafayette\Graphics\Projects\GIS\BIA\60177.26\Topo\1117gis2.fhb

UPPER REACH BOUNDARY
Latitude: 42° 45' 20.40"
Longitude: 121° 00' 1.26"
T 32S, R 14E, S 36, SE 1/4, NE 1/4
Bearing/Distance: From NE corner S 51° 1' 54" W, 1,544.7 Ft.
LOWER REACH BOUNDARY
Latitude: 42° 43' 16.75"
Longitude: 121° 09' 52.77"
T 33S, R 13E, S 10, NE 1/4, SW 1/4
Bearing/Distance: From SW corner N 52° 59' 31" E, 2,407.3 Ft.



Source: USGS 7.5 Minute
Quad: Sycan Marsh East,
Sycan Marsh West, Riverbed
Butte Spr., Pole Butte.

Vertical Datum: National
Geodetic Vertical Datum of
1929.

Horizontal Datum: 1927 North
American Datum.

KLAMATH ADJUDICATION
CLAIM # **6631** PAGE # **019**

Reach boundaries: Long Creek to Guard Station.
Plate 2 of 3.

RECEIVED

OCT 01 1999

WATER RESOURCES DEPT.
SALEM, OREGON

Klamath Basin Water Rights Claim #663

Department of the Interior Bureau of Indian Affairs

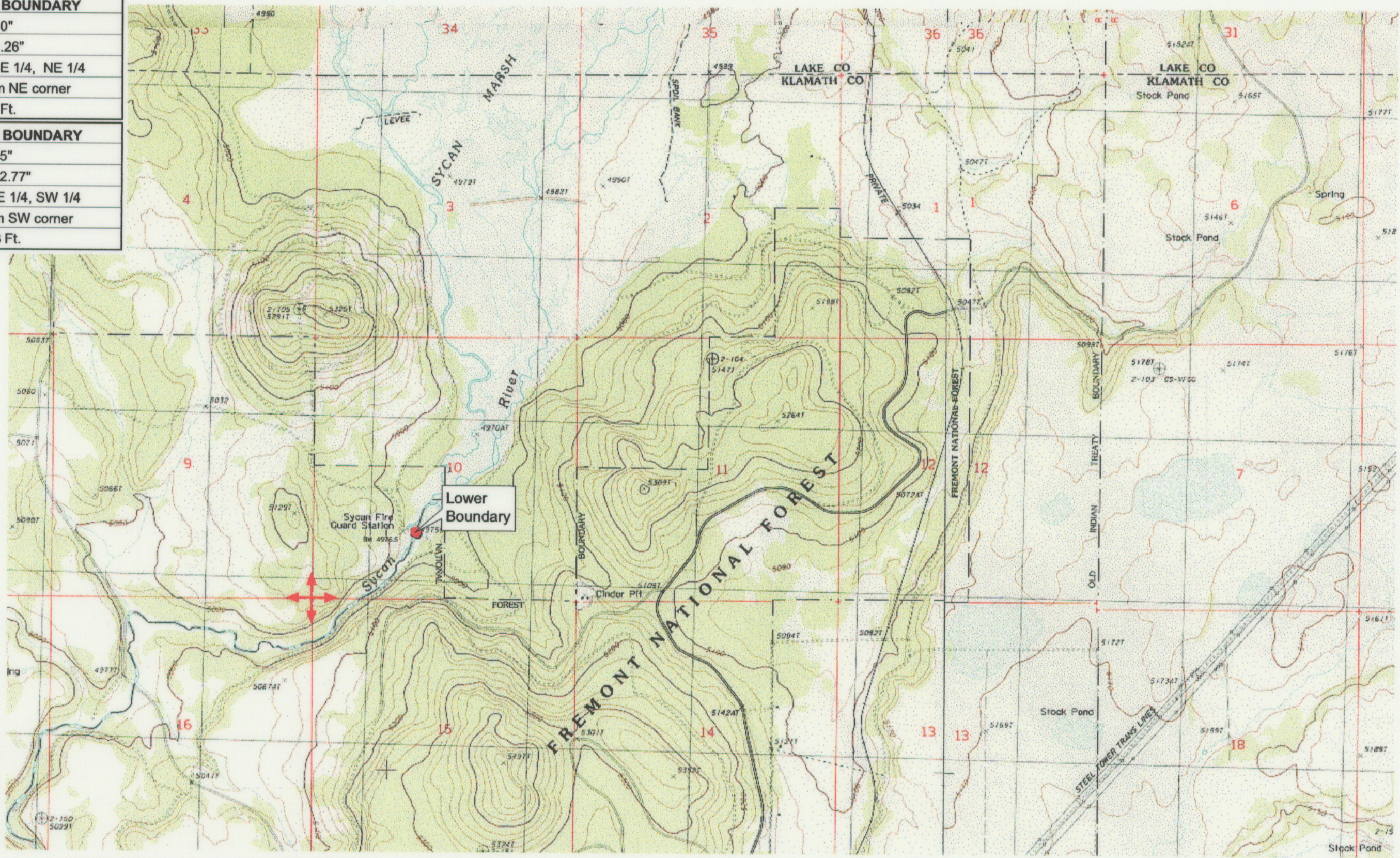
Reach Name: Sycan River #6 (SY 6)

Scale: 1:24,000

(Amended)

\\Lafayette\Graphics\Projects\GIS\BIA\60177.26\Topo\1117gis2.fh8

UPPER REACH BOUNDARY	
Latitude: 42° 45' 20.40"	
Longitude: 121° 00' 1.26"	
T 32S, R 14E, S 36, SE 1/4, NE 1/4	
Bearing/Distance: From NE corner	
S 51° 1' 54" W, 1,544.7 Ft.	
LOWER REACH BOUNDARY	
Latitude: 42° 43' 16.75"	
Longitude: 121° 09' 52.77"	
T 33S, R 13E, S 10, NE 1/4, SW 1/4	
Bearing/Distance: From SW corner	
N 52° 59' 31" E, 2,407.3 Ft.	



Source: USGS 7.5 Minute Quad: Sycan Marsh East, Sycan Marsh West, Riverbed Butte Spr., Pole Butte.

Vertical Datum: National Geodetic Vertical Datum of 1929.

Horizontal Datum: 1927 North American Datum.

KLAMATH ADJUDICATION
L. 663
 CLAIM # PAGE # **020**

Reach boundaries: Long Creek to Guard Station.
 Plate 3 of 3.

RECEIVED
 OCT 01 1999
 WATER RESOURCES DEPT.
 SALEM, OREGON

Klamath Basin Water Rights Claim #663
 Department of the Interior Bureau of Indian Affairs
 Reach Name: **Sycan River #6 (SY 6)**
 Scale: 1:24,000 (Amended)

\\Lafayette\Graphics\Projects\GIS\BIA\60177.26\Topo\1117gis2.fh8